

**THE VALE OF GLAMORGAN COUNCIL
(PROHIBITION AND RESTRICTION OF WAITING AND
LOADING AND PARKING PLACES)
(CIVIL ENFORCEMENT) (AMENDMENT) (NO 8) ORDER 2022**

The Vale of Glamorgan Council in exercise of its powers under the Road Traffic Regulation Act 1984 and Part 6 of the Traffic Management Act 2004 and of all other powers enabling it in that behalf and after consultation with the Chief Officer of South Wales Police, in accordance with Part III of Schedule 9 to the said Act of 1984 hereby makes the following Order:-

Interpretation

Regulation of Parking Places

No person shall except upon the direction or with the permission of a police constable in uniform or a Civil Parking Enforcement Officer cause or permit any vehicle to wait at any time in the lengths of road referred to in the Schedules to this Order.

1. Where a police constable in uniform or a traffic warden is of the opinion that the provisions contained in this Order have been contravened he may remove or cause to be removed the vehicle from its Parking Place.
2. A police constable in uniform or a traffic warden may move or cause to be moved in case of emergency to any place he thinks fit any vehicle left in a Parking Place and where it is so removed shall provide for the safe custody of the vehicle.
3. Every vehicle left in a Parking Place shall stand so that every part of the vehicle is within the limits of the Parking Place.
4. A police constable in uniform or a traffic warden or a person duly authorised by the Council may suspend the use of a Parking Place or any part thereof whenever he considers such suspension reasonably necessary:-
 - (i) for the purpose of facilitating the movement of traffic or promoting its safety;
 - (ii) for the purpose of any building operation the maintenance improvement or reconstruction of the highway or the cleansing of gullies in or adjacent to the Parking Place the laying erection alteration or repair in or adjacent to the Parking Place or any sewer or of any main pipe or apparatus for the supply of gas water electricity or of any telecommunication system or the placing maintenance or removal of any traffic sign;

- (iii) for the convenience of occupiers of premises adjacent to the Parking Place on any occasion of the delivery or removal of furniture to or from an office or dwellinghouse adjacent to the Parking Place;
 - (iv) on any occasion on which it is likely by reason of some special attraction that the street in which the Parking Place is situate will be thronged or obstructed;
 - (v) for the convenience of occupiers of premises adjacent to the Parking Place for parking the official vehicles (provided that there are no more than three) being at that time in use in connection with a wedding taking place that day comprising only the vehicles to transport the bride and/or the bridegroom and/or the bridesmaids to the place of the marriage ceremony on the wedding day;
 - (vi) for the convenience of occupiers of premises adjacent to the Parking Place for the use of vehicle as a part of a funeral cortege or otherwise in connection with a funeral provided the vehicle is owned by a funeral director or by an owner of funeral vehicles.
5. Any person or police constable in uniform or traffic warden suspending the use of a Parking Place or any part thereof in accordance with the provisions of this Order shall thereupon place or cause to be placed in or adjacent to that Parking Place or as the case may be that part thereof the use of which is suspended a traffic sign of any size colour and type prescribed or authorised under Section 64 of the Act of 1984 indicating that waiting of vehicles is prohibited.
6. No person shall cause or permit a vehicle to wait in any part of the Parking Place during such period as there is in or adjacent to that part of the Parking Place in a traffic sign placed in pursuance of this Order.
7. Notwithstanding the foregoing provisions of this order any vehicle may wait in any part of a Parking Place provided that:-
- (i) the vehicle is waiting only for so long as is necessary to enable a person to board or alight from the vehicle;
 - (ii) the vehicle is waiting owing to the driver being prevented from proceeding by circumstances beyond his control or such waiting being necessary in order to avoid an accident;
 - (iii) the vehicle is being used for fire brigade or ambulance purposes or a vehicle (other than a passenger vehicle) in the service of a police force in either case being used in pursuance of statutory powers or duties;
 - (iv) the vehicle is waiting for only so long as may be necessary to enable it to be used in connection with the removal of any obstruction to traffic;
 - (v) the driver has been given the permission of the Council;

- (vi) the driver has been given the permission of a police constable in uniform, a traffic warden or the person suspending the use of the Parking Place or part thereof in pursuance of this Order.

Except as provided by this Order or upon the direction or with the permission of a police constable in uniform or a traffic warden no person shall cause or permit any vehicle to wait at any time in a Parking Place designated by this Order, unless the vehicle is displaying in a conspicuous position a Badge in accordance with the Disabled Person (Badges for Motor Vehicles) (Wales) Regulations 2000 and a Parking Disc as defined in the Local Authorities Traffic Orders (Exemptions for Disabled Persons) (Wales) Regulations 2000.

Citation and Commencement

The restrictions imposed by this Order shall be in addition to and not in derogation of any restriction or requirement imposed by any regulations made or having effect as if made under the Road Traffic Regulation Act 1984 or by or under any other enactment.

This Order shall come into operation on the 12th September 2022 or on the dates that the signs and road markings are in place whichever is the later and may be cited as the "Vale of Glamorgan Council (Prohibition and Restriction of Waiting and Loading and Parking Places) (Civil Enforcement) (Amendment) (No 8) Order 2022".

The following Traffic Regulation Order is to be amended as follows:

Vale of Glamorgan Council (Prohibition and Restriction of Waiting and Loading and Parking Places) (Civil Enforcement) Order 2013

SCHEDULE

Ham Lane East, Llantwit Major

Revocation of Prohibition of Waiting Mon-Fri 8am-9am and 3pm-4pm, and replace with Prohibition of Waiting, Loading and Unloading Mon-Fri 8am-9:30am and 2:30pm-4pm. Insert into map AU24

On the west side from a point 15 metres from its junction with Boverton Road for a distance of approximately 75 metres in a south-westerly direction.

Revocation of Prohibition of Waiting Mon-Fri, 8am-9am and 3pm-4pm and replace with Prohibition of Waiting, Loading and Unloading at Any Time. Insert into map AU24.

On the east side from a point 15 metres from its junction with Boverton Road for a distance of approximately 40 metres in a south-westerly direction

Revocation of Prohibition of Waiting Mon-Fri, 8am-9am and 3pm-4pm and replace with Prohibition of Stopping Mon-Fri 8am-5pm. Insert into map AU24.

On the east side from a point 55 metres from its junction with Boverton Road for a distance of approximately 44 metres in a south-westerly direction

Revocation of Prohibition of Waiting Mon-Fri, 8am-5pm and replace with Prohibition of Waiting, Loading and Unloading at Any Time. Insert into maps AU24, AV23, and AV24.

On the east side from a point 107 metres from its junction with Boverton Road for a distance of approximately 13 metres in a south-westerly direction.

On the east side from a point 5 metres from its junction with the entrance to Llantwit Major Primary School car park for a distance of approximately 35 metres in a south-westerly direction.

On the east side from a point 5 metres from its junction with the Vehicle entrance to Llantwit Major Leisure Centre car park for a distance of approximately 25 metres in a south-westerly direction.

On the east side from a point 26 metres from its junction with the entrance to Y Draig School car park for a distance of approximately 23 metres in a south-westerly direction.

On the west side from a point 107 metres from its junction with Boverton Road for a distance of approximately 13 metres in a south-westerly direction.

Prohibition of Loading and Unloading at Any Time. Insert into maps AU24, AV23, and AV24.

On the east side from its junction with Boverton Road for a distance of approximately 15 metres in a general south-westerly direction.

On the east side from a point 120 metres from its junction with Boverton Road for a distance of approximately 30 metres in a south-westerly direction.

On the east side from its junction with the entrance to Llantwit Major Primary School car park for a distance of approximately 5 metres in a general south-westerly direction.

On the east side from a point 40 metres from its junction with the entrance to Llantwit Major Primary School car park a distance of approximately 25 metres in a south-westerly direction.

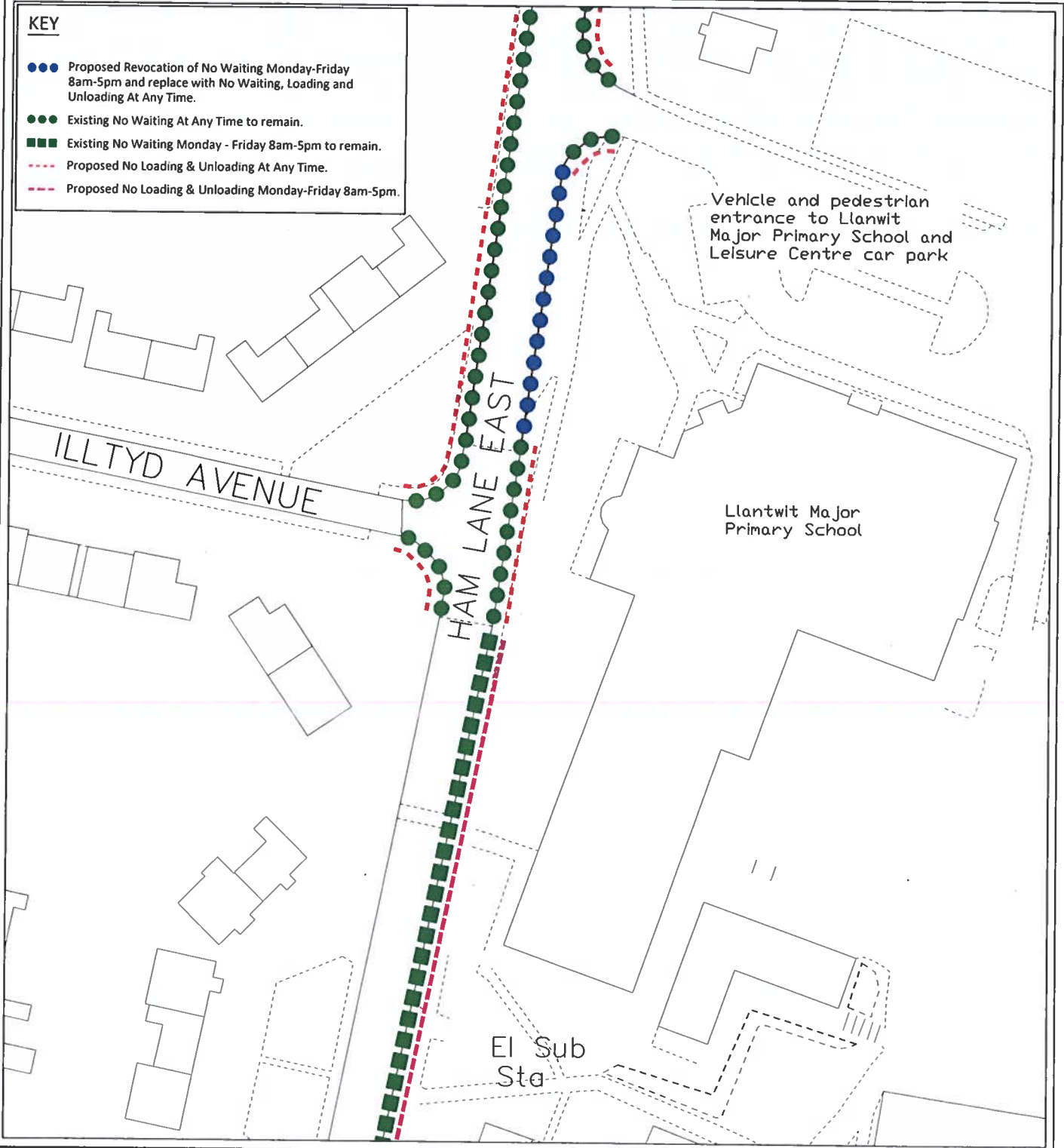
On the east side from a point 150 metres from its junction with the entrance to Llantwit Major Primary School car park for a distance of approximately 10 metres in a south-westerly and then south-easterly direction.

On the east side from its junction with the entrance to Llantwit Major Leisure Centre car park for a distance of approximately 5 metres in a westerly and then in a south-westerly direction.

On the east side from a point 30 metres from its junction with the entrance to Llantwit Major Leisure Centre car park for a distance of approximately 33 metres in a south-westerly direction.

KEY

- Proposed Revocation of No Waiting Monday-Friday 8am-5pm and replace with No Waiting, Loading and Unloading At Any Time.
- Existing No Waiting At Any Time to remain.
- ■ ■ Existing No Waiting Monday - Friday 8am-5pm to remain.
- - - Proposed No Loading & Unloading At Any Time.
- - - Proposed No Loading & Unloading Monday-Friday 8am-5pm.



VALE of GLAMORGAN

ENVIRONMENT & HOUSING SERVICES

Director:
Miles Punter

Head of Neighbourhood
Services & Transport:
Emma Reed



BRO MORGANNWG



ENGINEERING DESIGN
AND PROCUREMENT

| Rev | By | Description of Amendment | Revisions | CHK by | Date |
|-----|----|--------------------------|-----------|--------|------|
| | | | | | |
| | | | | | |
| | | | | | |
| | | | | | |
| | | | | | |
| | | | | | |
| | | | | | |
| | | | | | |
| | | | | | |
| | | | | | |

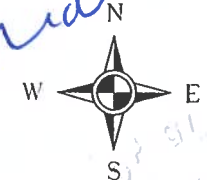
Client: **The Vale of Glamorgan Council**

Project Title: **Ham Lane East, Llanwit Major**

Drawing Title: **Proposed Waiting, Loading, & Unloading Restrictions (2 of 3)**

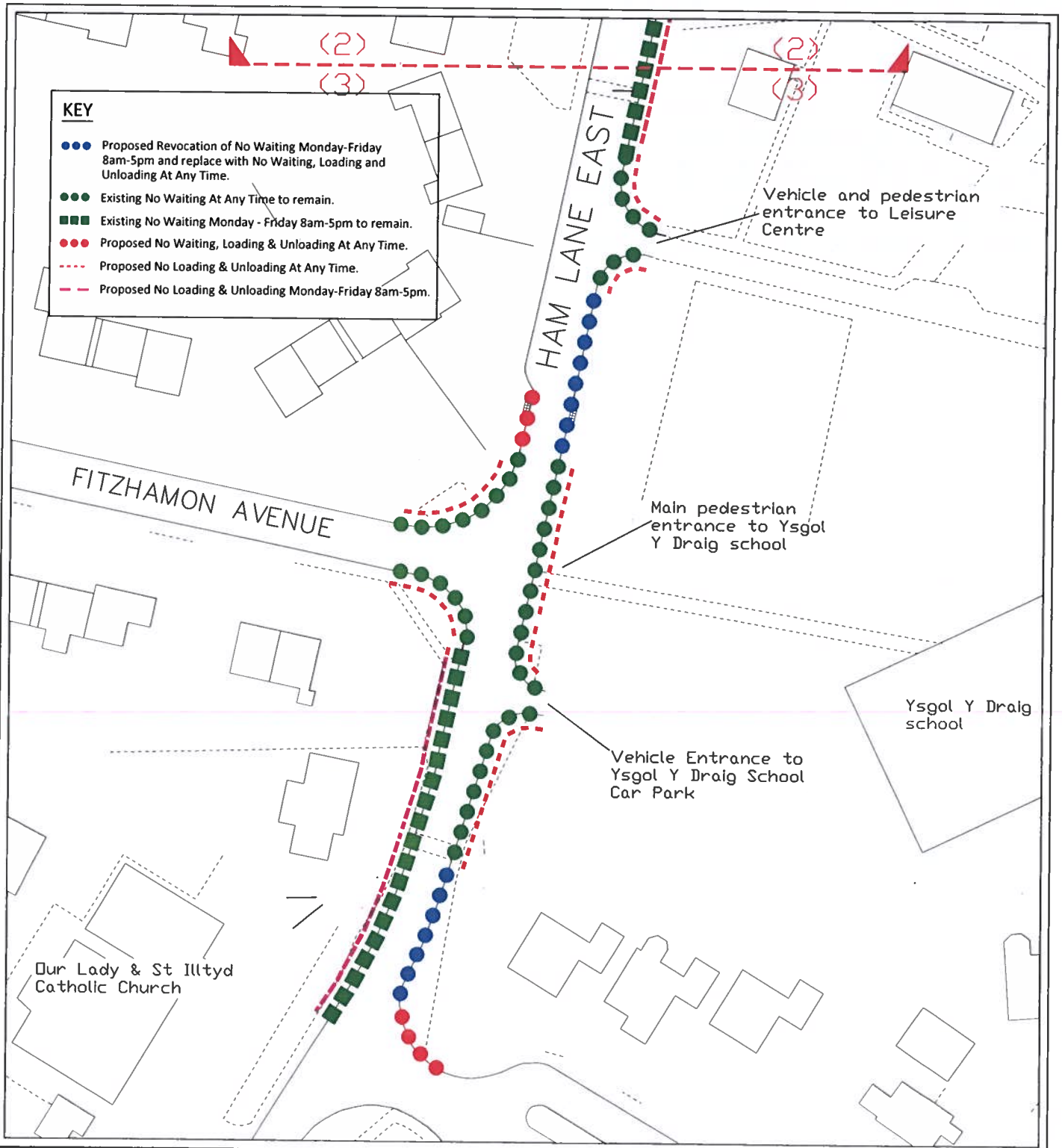
| | | | | | | | |
|---------|--------|--------|-----|-------------|--------|-------------|------------|
| Drawn | ON | Scale | NTS | Project No. | IF 956 | Drawing No. | T/22/35/ON |
| Date | JUN 22 | | | | | | |
| Checked | | File | | | | | |
| Date | | Window | | | | | |

Prider



"This map is based upon Ordnance Survey material with the permission of Ordnance Survey on behalf of the Controller of Her Majesty's Stationery Office © Crown copyright. Unauthorised reproduction infringes Crown copyright and may lead to prosecution or civil proceedings." The Vale of Glamorgan Council Licence No. 100023424 2022

"Mae'r map hwn yn seiliedig ar ddeunydd yr Ordnance Survey gyda chaniatâd Yr Ordnance Survey ar ran Rheolwr Llyfrfa Ei Mawrhydi © Hawlfraint y Goron. Mae atgynhyrchu heb ganiatâd yn torri hawlfraint y Goron a gal. hyn arwain at erlyniad neu achos siŵl." Cyngror Bro Morgannwg rhif trwy dded 100023424. 2022



VALE of GLAMORGAN
 ENVIRONMENT & HOUSING SERVICES

Director:
Miles Punter

Head of Neighbourhood Services & Transport:
Emma Reed

BRO MORGANNWG

ENGINEERING DESIGN AND PROCUREMENT

| Rev | By | Description of Amendment | Revisions | On By | Date |
|-----|----|--------------------------|-----------|-------|------|
| | | | | | |
| | | | | | |
| | | | | | |
| | | | | | |
| | | | | | |
| | | | | | |
| | | | | | |
| | | | | | |
| | | | | | |
| | | | | | |

Client: The Vale of Glamorgan Council

Project Title: Ham Lane East, Llanwit Major

Drawing Title: Proposed Waiting, Loading, & Unloading Restrictions (3 of 3)

| | | | |
|--------------|------------|---------------------|------------------------|
| Drawn: ON | Scale: NTS | Project No.: IF 956 | Drawing No: T/22/35/ON |
| Date: JUN 22 | File | Rev | |
| Checked | Window | | |
| Date | | | |

Andrew

"This map is based upon Ordnance Survey material with the permission of Ordnance Survey on behalf of the Controller of Her Majesty's Stationery Office © Crown copyright. Unauthorised reproductions in any form are prohibited and may lead to prosecution or civil proceedings." The Vale of Glamorgan Council Licence No. 100023424. 2022.

"Mae'r map hwn yn seiliedig ar ddeunydd yr Ordnance Survey gyda chyniatid Yr Ordnance Survey ar ran Rheolwr Llyfrfa Ei Mawrhydi © Hawlfraint y Goron Mae atgynhychu heb ganiatâd yn torri hawlfraint y Goron a gall hyn arwain at erlynnad neu achos sifil." Cyngor Bro Morgannwg rhif twydded 100023424. 2022.

On the east side from its junction with the entrance to Y Draig School car park for a distance of approximately 26 metres in a westerly and then south-westerly direction.

On the west side from its junction with Boverton Road for a distance of approximately 15 metres in a general south-westerly direction.

On the west side from a point 120 metres from its junction with Boverton Road for a distance of approximately 90 metres in a south-westerly direction.

On the west side from its junction with Illtyd Avenue for a distance of approximately 10 metres in a south-easterly and then south-westerly direction.

On the west side from a point 130 metres from its junction with Illtyd Avenue for a distance of approximately 10 metres in a south-westerly and then north-westerly direction.

Prohibition of Waiting, Loading and Unloading at Any Time. Insert into map AV23.

On the west side from a point 120 metres from its junction with Illtyd Avenue for a distance of approximately 10 metres in a south-westerly direction.

Prohibition of Loading and Unloading Mon-Fri, 8am-5pm. Insert into maps AU24, AV23, and AV24.

On the east side from a point 65 metres from its junction with the entrance to Llantwit Major Primary School car park for a distance of approximately 85 metres in a south-westerly direction.


On the west side from a point 10 from its junction with Fitzhamon Avenue for a distance of approximately 55 metres in a south-westerly direction.

Lon-Od-Nant, Llantwit Major

Prohibition of Waiting, Loading and Unloading at Any Time. Insert into map AV24.

On the north-eastern side from its junction with Ham Lane East for a distance of approximately 10 metres in a south-easterly direction.

THE COMMON SEAL of
VALE OF GLAMORGAN COUNCIL was
hereunto affixed the 5th day of September
2022 in the presence of



Operational Manager Legal Services
Vale of Glamorgan Council

