

THE BOROUGH OF SLOUGH
WAITING RESTRICTIONS AND RESIDENTS' PARKING ORDER 2006
(AMENDMENT No. 11) Order 2008

1. The Council of the Borough of Slough, in exercise of the powers conferred on it under Sections 1, 2, 4, 124 and parts III and IV of Schedule 9 to the Road Traffic Regulation Act ("the Act") and of all other enabling powers and after consulting with the Chief Officer of Police in accordance with Part III of Schedule 9 to the Act, hereby makes the following Order:-
2. This Order shall come into effect on the 23rd March 2009 and may be cited as "The Borough of Slough Waiting Restrictions and Residents' Parking Order 2006 (Amendment No. 11) Order 2008.
3. The Borough of Slough Waiting Restrictions and Residents' Parking Order 2006 shall have effect as though:
 - (a) The items relating to Bath Road (A4) Northern Service Road from Dover Road to Galvin Road, Galleymead Road, Galvin Road, Langley Road, Mill Street (Colnbrook), Spackmans Way, Stoke Poges Lane, Sussex Place, Turner Road and Upton Court Road were deleted from Schedule 2.01 of that Order;
 - (b) Schedule 2.01 is amended by the addition of the restrictions detailed in Schedule A hereto;
 - (c) The items relating to Buckland Avenue, Lascelles Road and Quaves Road were deleted from Schedule 2.03 of that Order;
 - (d) Schedule 2.03 is amended by the addition of the restrictions detailed in Schedule B hereto;
 - (e) The items relating to Lascelles Road and Sussex Place were deleted from Schedule 3.01 of that Order;
 - (f) Schedule 3.01 is amended by the addition of the restrictions detailed in Schedule C hereto;
 - (g) The items relating to Hawthorne Crescent, Richmond Crescent and Stoke Poges Lane were deleted from Schedule 3.02 of that Order;
 - (h) Schedule 3.02 is amended by the addition of the restrictions detailed in Schedule D hereto;
 - (i) The item relating to Farnburn Avenue was deleted from Schedule 3.09 of that Order;
 - (j) Schedule 3.09 is amended by the addition of the restrictions detailed in Schedule E hereto;

- (k) The item relating to Farnburn Avenue was deleted from Schedule 3.10 of that Order;
 - (l) Schedule 3.10 is amended by the addition of the restrictions detailed in Schedule F hereto; and
 - (m) Schedule 3.15 is added to that Order by the inclusion of the restrictions detailed in Schedule G hereto.
4. The Interpretation Act 1978 shall apply for the interpretation of this Order as it applies to the interpretation of an Act of Parliament.

Dated 2009

THE COMMON SEAL of SLOUGH BOROUGH)
COUNCIL was hereunto affixed in the presence)

Of:-

sanayle)

Steven Quayle
Borough Secretary And Solicitor

The Borough Secretary and Solicitor

S27



SCHEDULE A
NEW WAITING RESTRICTIONS
NO WAITING AT ANY TIME
(added to Schedule 2.01)

Bath Road (A4)

*Northern Service Road
from Dover Road to
Galvin Road*

North side:

- (i) From the east side of its junction with Dover Road and a point 18 metres east of that junction.
- (ii) From a point 75 metres east of the east side of its junction with Dover Road and a point 102 metres east of that junction.
- (iii) From a point 150 metres east of the east side of its junction with Dover Road and a point 191 metres east of that junction.
- (iv) From the west side of its junction with Ipswich Road westwards for a distance of 20 metres.
- (v) From a point 91 metres west of the west side of its junction with Ipswich Road westwards for a distance of 130 metres.
- (vi) From the east side of its junction with Ipswich Road eastwards for a distance of 237 metres.
- (vii) From the west side of its junction with Leigh Road westwards for a distance of 28 metres.
- (viii) From the east side of its junction with Leigh Road eastwards for a distance of 167 metres.
- (ix) From a point 218 metres east of the east side of its junction with Leigh Road eastward for a distance of 108 metres.
- (x) From a point 351 metres east of the east side of its junction with Leigh Road and its south-easternmost extremity.

South side:

From the east side of its junction with Dover Road eastwards and its south-easternmost extremity

Birch Grove

Both sides:

From its junction with Farnburn Avenue northwards for a distance of 10 metres

Buckland Avenue	<p>Both sides: From its junction with Quaves Road south-westwards for a distance of 16 metres</p>
Cromwell Drive (eastern arm)	<p>Both sides: From a point 10 metres north of the northern kerbline of the east to west arm of Cromwell Drive and the northern flank wall of No. 73 Cromwell Drive</p>
Cromwell Drive (east to west arm)	<p>Both sides: From its junction with the eastern arm of Cromwell Drive eastwards for a distance of 12 metres</p>
Cromwell Drive (northern arm)	<p>Both sides: From a point 10 metres west of the party wall of Nos. 28 and 30 Cromwell Drive eastwards for a distance of 20 metres</p>
Cromwell Drive (southern arm)	<p>Both sides: From a point 10 metres west of its junction with Grant Avenue and a point 1 metre east of the party wall of Nos. 93 and 95 Cromwell Drive</p>
Faraday Road	<p>Both sides: From its junction with Furnival Avenue northwards for a distance of 8 metres</p>
Farnburn Avenue	<p>North side: From a point 10 metres east of the eastern kerbline of Birch Grove and a point 10 metres west of the western kerbline of Birch Grove</p> <p>South side: From a point 10 metres east of the eastern kerbline of Peel Court and a point 10 metres west of the western kerbline of Peel Court</p>
Foxherne	<p>Both sides: From its junction with Halkingcroft westwards for a distance of 10 metres</p>
Furnival Avenue	<p>Both sides: From a point 10 metres west of the western kerbline of Faraday Road and a point 10 metres east of the eastern kerbline of Faraday Road</p>
Galleymead Road	<p>All sides: For its entire length</p>

Galvin Road

Both sides:

From its junction with Bath Road (A4) (Northern Service Road from Dover Road to Galvin Road) northwards for a distance of 23 metres.

West side:

From a point 33 metres north of its junction with Bath Road (A4) *Northern Service Road from Dover Road to Galvin Road* northwards for a distance of 39 metres

Grant Avenue

Both sides:

From its junction with the southern arm of Cromwell Drive and the northern boundary of No. 18 Grant Avenue

East side:

From a point 3 metres south of a point opposite the party wall of Nos. 11 and 13 Grant Avenue including the all of the island site at its junction with Hawthorne Crescent

Halkingcroft

South, east and south-east sides:

(i) From the party wall of Nos. 14 and 16 Halkingcroft and a point 5 metres south of a point opposite the party wall of Nos.9 and 11 Halkingcroft

(ii) From the common boundary of Nos. 2 and 4 Halkingcroft south and south-eastwards to its junction with Turner Road

West and north-west sides:

(i) From the common boundary of Nos. 3 and 5 Halkingcroft south and south-westwards for a distance of 25 metres

(ii) From a point 11 metres north-east of its junction with Foxherne south and south-westwards to its junction with Turner Road

Hawthorne Crescent (southern arm)

Both sides

(i) From its junction with Stoke Poges Lane and the south-western boundary of No. 2 Hawthorne Crescent

(ii) From a point 8 metres north of the party wall of Nos. 42 and 44 Hawthorne Crescent and its junction with the western arm of Hawthorne Crescent

South and west side:

From its junction with Grant Avenue and a point 6 metres north of a point opposite the common boundary of Nos. 28 and 30 Hawthorne Crescent

**Hawthorne Crescent
(western arm)****Both sides:**

(i) From its junction with the southern arm of Hawthorne Crescent and the common boundary of Nos. 52 and 53 Hawthorne Crescent

(ii) From the common boundary of Nos. 80 and 82 Hawthorne Crescent and the common boundary of Nos. 86 and 88 Hawthorne Crescent

**Hawthorne Crescent
(northern arm)****Both sides:**

(i) From its junction with Stoke Poges Lane and the party wall of Nos. 101 and 103 Hawthorne Crescent

(ii) From a point 3 metres west of the party wall of Nos. 85 and 87 Hawthorne Crescent and a point 2 metres west of the common boundary of Nos. 83 and 85 Hawthorne Crescent

South side:

(i) From a point 8 metres west of the western kerbline of Sherman Road and a point 8 metres east of the eastern kerbline of Sherman Road

**Hawthorne Crescent
(east to west arm)****Both sides:**

From its junction with the western arm of Hawthorne Crescent westwards for a distance of 12 metres

Hempson Avenue**Both sides:**

From its junction with Langley Road southwards for a distance of 12 metres.

West side:

From a point 4 metres south of the common boundary of Nos. 21 and 19 Hempson Avenue and the common boundary of Nos. 15 and 17a Hempson Avenue

Langley Road**North side**

From a point 15 metres west of the western kerb line of Turner Road eastwards to a point 16 metres east of the eastern kerb line of Turner Road

Palmerston Avenue	<p>Both sides: From its junction with Lascelles Road south-eastwards for a distance of 16 metres</p>
Peel Court	<p>Both sides: From its junction with Farnburn Avenue southwards for a distance of 8 metres</p>
Portsmouth Court	<p>North side: Its entire length</p> <p>South side: From its junction with Stoke Poges Lane eastwards for a distance of 8 metres.</p>
Quaves Road	<p>Both sides: From its junction with Lascelles Road south-eastwards for a distance of 18 metres</p> <p>South-west side: From the common boundary of Nos. 6 and 8 Quaves Road and the common boundary of Nos. 12 and 14 Quaves Road</p>
Sherman Road	<p>Both sides: (i) From its junction with the northern arm of Hawthorne Crescent southwards for a distance of 5 metres</p> <p>(ii) From a point 16 metres north of its junction with the northern arm of Cromwell Drive and that junction</p>
Spackmans Way	<p>North, north-west and north-east sides: (i) From the party wall of Nos. 128 and 130 Spackmans Way south-east and eastwards for a distance of 25 metres</p> <p>(ii) From the south-western flank wall of No. 126 Spackmans Way and a point 3 metres north-east of the party wall of Nos. 64 and 66 Spackmans Way</p>
Stewart Avenue	<p>Both sides: From its junction with Hawthorne Crescent for a distance of 8 metres</p>
Stoke Poges Lane	<p>Both sides: From a point 1 metre north of the party wall of Nos. 276 and 278 Stoke Poges Lane and the party wall of Nos. 244 and 246 Stoke Poges Lane</p>

East side:

From a point 10 metres north of the northern kerbline of Portsmouth Court and a point 10 metres south of the southern kerbline of Portsmouth Court

South and south-east sides:

(i) From its junction with Uxbridge Road and its junction with Wellington Street.

(ii) From a point 18 metres west of the north-western kerbline of Lascelles Road and a point 26 metres east of the south-eastern kerbline of Lascelles Road

North side:

From the centre of its junction with Clements Close westwards for 13 metres and eastwards for 11 metres.

North-east side:

Its entire length

North-west side:

From a point 8 metres north-east of the northern kerbline of St Pauls Avenue and its north-easternmost extremity

South-east side:

From a point 32 metres north-east of its junction with St Pauls Avenue to its north-easternmost extremity **excluding** the parking layby fronting Nos. 18 – 29 Troutbeck Close

East side:

(i) From its junction with Halkingcroft southwards to the common boundary of Nos. 2 and 4 Halkingcroft

(ii) From a point 15 metres north of the northern kerb line of Sutton Avenue southwards for a distance of 52 metres

(iii) From a point 17 metres north of its junction with Langley Road and that junction

West side:

(i) From a point 10 metres north of the northern kerb line of Sutton Avenue southwards for a distance of 52 metres

(ii) From a point 17 metres north of its junction with Langley Road and that junction

Sussex Place

Troutbeck Close

Turner Road

Upton Court Road

North side:

(i) From its junction with the roundabout junction of Yew Tree Road, Datchet Road, Mere Road and St. Laurence Way to a point 62 metres east of its junction with Upton Road.

(ii) From a point 31 metres west of the north-western kerbline of Lascelles Road and a point 24 metres south-east of the south-eastern kerbline of Lascelles Road

South side:

From its junction with the roundabout junction of Yew Tree Road, Datchet Road, Mere Road and St. Laurence Way to a point 11 metres south-east of a point opposite and in line with the north-west boundary of Upton Church.

Vicarage Way

North-west side:

From its junction with High Street, Colnbrook and Bridge Street north-eastwards for a distance of 35 metres

South-east side:

From a point 17 metres north-east of its junction with High Street, Colnbrook and Bridge Street and the north-western flank wall of No. 267 Vicarage Way

**SCHEDULE B
AMENDED WAITING RESTRICTIONS
NO WAITING 6.00AM TO MIDNIGHT**

**ONLY WHEN SIGNS TO DIAGRAM 636 OF THE TRAFFIC SIGNS
REGULATIONS AND GENERAL DIRECTIONS 2002 ARE DISPLAYED**
(added to Schedule 2.03)

Buckland Avenue

Both sides:

From its junction with Upton Court Road and a point 16 metres south-west of its junction with Quaves Road

Lascelles Road

North-west side:

From a point 12 metres north-east of its junction with

Upton Court Road and a point 12 metres south-west of its junction with Sussex Place

Quaves Road

North-east side:

From a point 18 metres south-east of its junction with Lascelles Road and its junction with Upton Court Road

South-west side:

(i) From a point 18 metres south-east of its junction with Lascelles Road and common boundary of Nos. 6 and 8 Quaves Road

(ii) From the common boundary of Nos. 12 and 14 Quaves Road and its junction with Upton Court Road

SCHEDULE C AMENDED WAITING RESTRICTIONS NO WAITING 8AM TO 9PM MONDAY TO SATURDAY (added to Schedule 3.01)

Sussex Place

North side:

From a point 90 metres west of the west side of its junction with Lascelles Road and a point 18 metres east of the east side of that junction

South side:

From a point 90 metres west of the west side of its junction with Lascelles Road and a point 18 metres west of that junction.

SCHEDULE D
AMENDED WAITING RESTRICTIONS
NO WAITING 8AM TO 7PM MONDAY TO SATURDAY
(added to Schedule 3.02)

Richmond Crescent

North side:

From the common boundary of Nos. 62-60 Richmond Crescent eastwards for a distance of 35 metres.

East side:

From its junction with Wellesley Road and a point 10 metre north of that junction.

South side:

From a point opposite the common boundary of Nos. 62-60 Richmond Crescent to its junction with Wellesley Road.

Stoke Poges Lane

West side:

(i) From a point 28 metres north of the north side of its junction with the southern arm of Hawthorne Crescent southwards to a point opposite the boundary between Nos. 85 and 87 Stoke Poges Lane excluding the waiting bay fronting Baylis Parade.

(ii) From a point 18 metres north of the north side of its junction with Leeds Road to a point 18 metres south of the south side of that junction.

(iii) From a point 18 metres north of the north side of its junction with Carmarthen Road southwards to a point opposite the boundary between Nos. 19 and 21 Stoke Poges Lane **excluding** the waiting bay fronting Belgrave Parade.

East side:

(i) From a point 28 metres north of the north side of the southern arm of Hawthorne Crescent and a point 10 metres north of the northern kerbline of Portsmouth Court

(ii) From a point 10 metres south of the southern kerbline of Portsmouth Court and the common boundary of Nos. 19 and 21 Stoke Poges Lane

excluding the lay-by fronting No's 31 to 39 Stoke
Poges Lane.

SCHEDULE E
AMENDED WAITING RESTRICTIONS
NO WAITING 8.00AM TO 7.00 PM
MONDAY, WEDNESDAY AND FRIDAY
(added to Schedule 3.09)

Farnburn Avenue

North side:

(i) From a point 87 metres west of its junction with
Farnham Road and a point 10 metres east of the
eastern kerbline of Birch Grove

(ii) From a point 10 metres west of the western
kerbline of Birch Grove westwards to its westernmost
extremity

SCHEDULE F
AMENDED WAITING RESTRICTIONS
NO WAITING 8.00AM TO 7.00 PM
TUESDAY, THURSDAY AND SATURDAY
(added to Schedule 3.10)

Farnburn Avenue

South side:

(i) From a point 87 metres west of its junction with
Farnham Road and a point 10 metres east of the
eastern kerbline of Peel Court

(ii) From a point 10 metres west of the western
kerbline of Peel Court westwards to its westernmost
extremity

SCHEDULE G
NEW WAITING RESTRICTIONS
NO WAITING MONDAY TO FRIDAY 8AM – 10AM AND 3PM – 5PM
(added as Schedule 3.15)

Lascelles Road

South-east side:

(i) From a point 12 metres north-east of its junction with Upton Court Road and the common boundary of Nos. 3 and 5 Lascelles Road

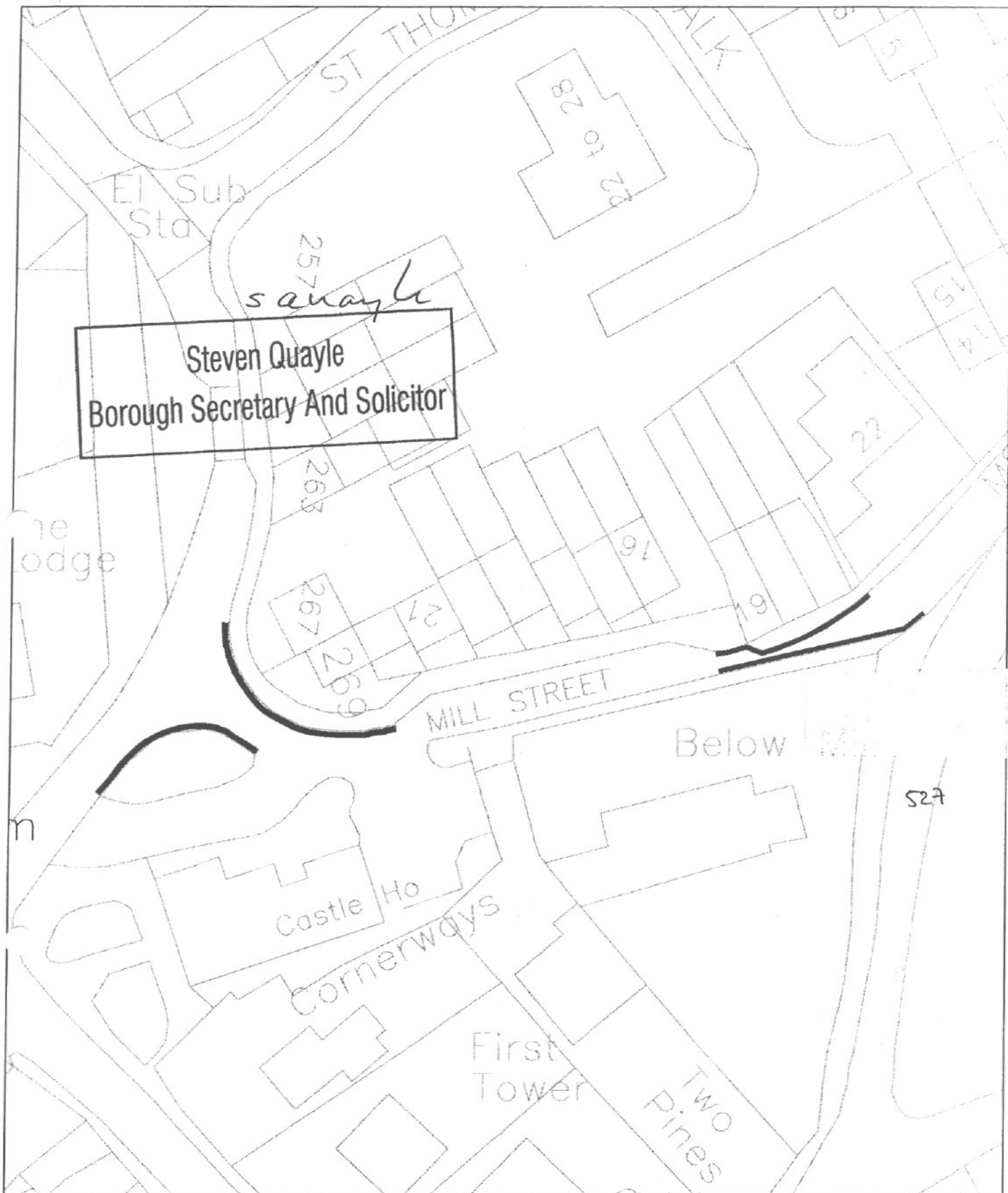
(ii) From a point 6 metres north-east of the common boundary of Nos. 1 and 3 Lascelles Road and the common boundary of Nos. 1b and 1c Lascelles Road

(iii) From the south-western flank wall of No. 1a Lascelles Road and a point 12 metres south-west of its junction with Sussex Place

Quaves Road

South-west side:

From a point 18 metres south-east of its junction with Lascelles Road and the common boundary of Nos. 6 and 8 Quaves Road



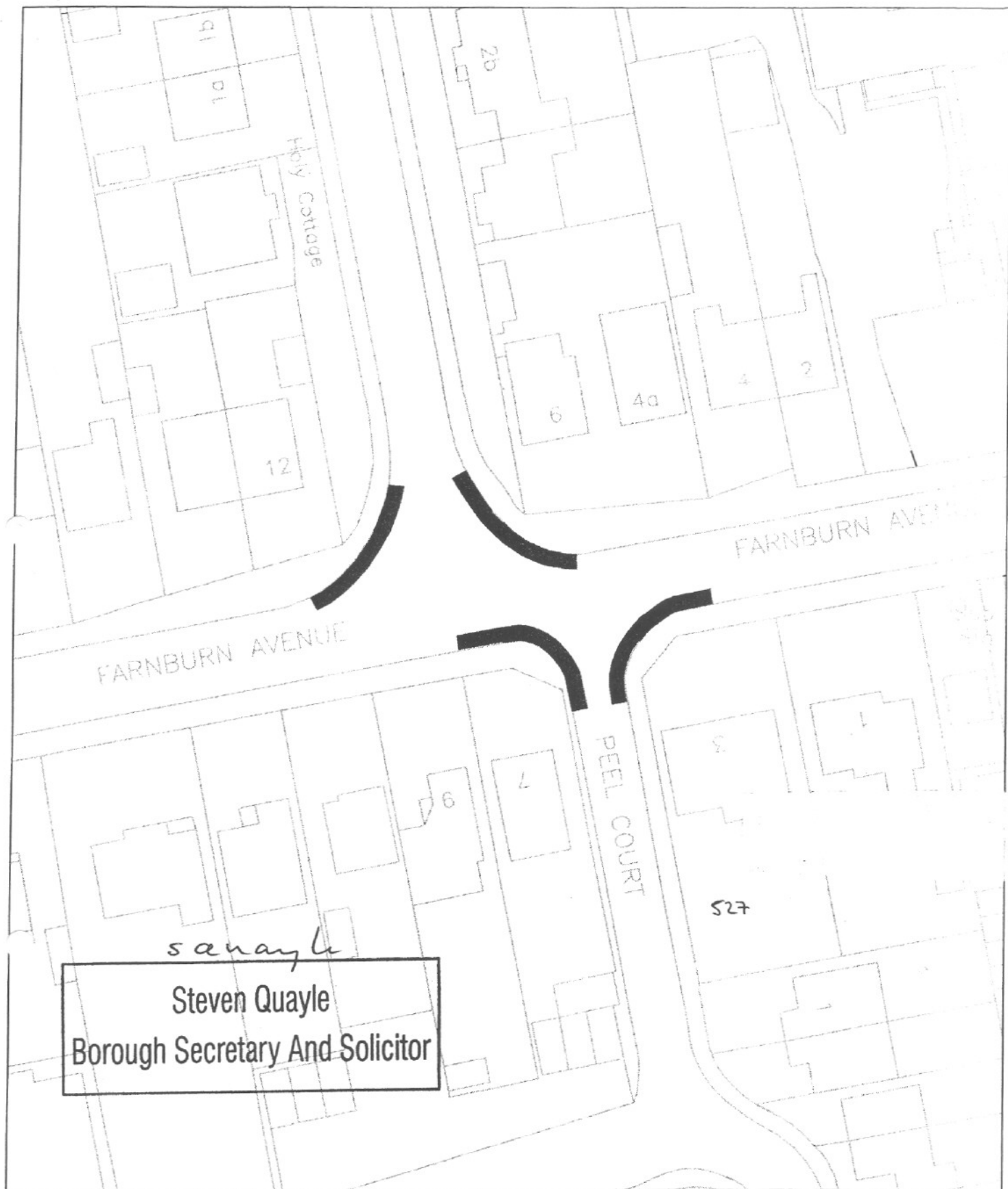
KEY:

— PROPOSED WAITING RESTRICTIONS
(AT ANY TIME)

A DRN CHKD
REV DRN CHKD

FIRST ISSUE


DATE
DATE

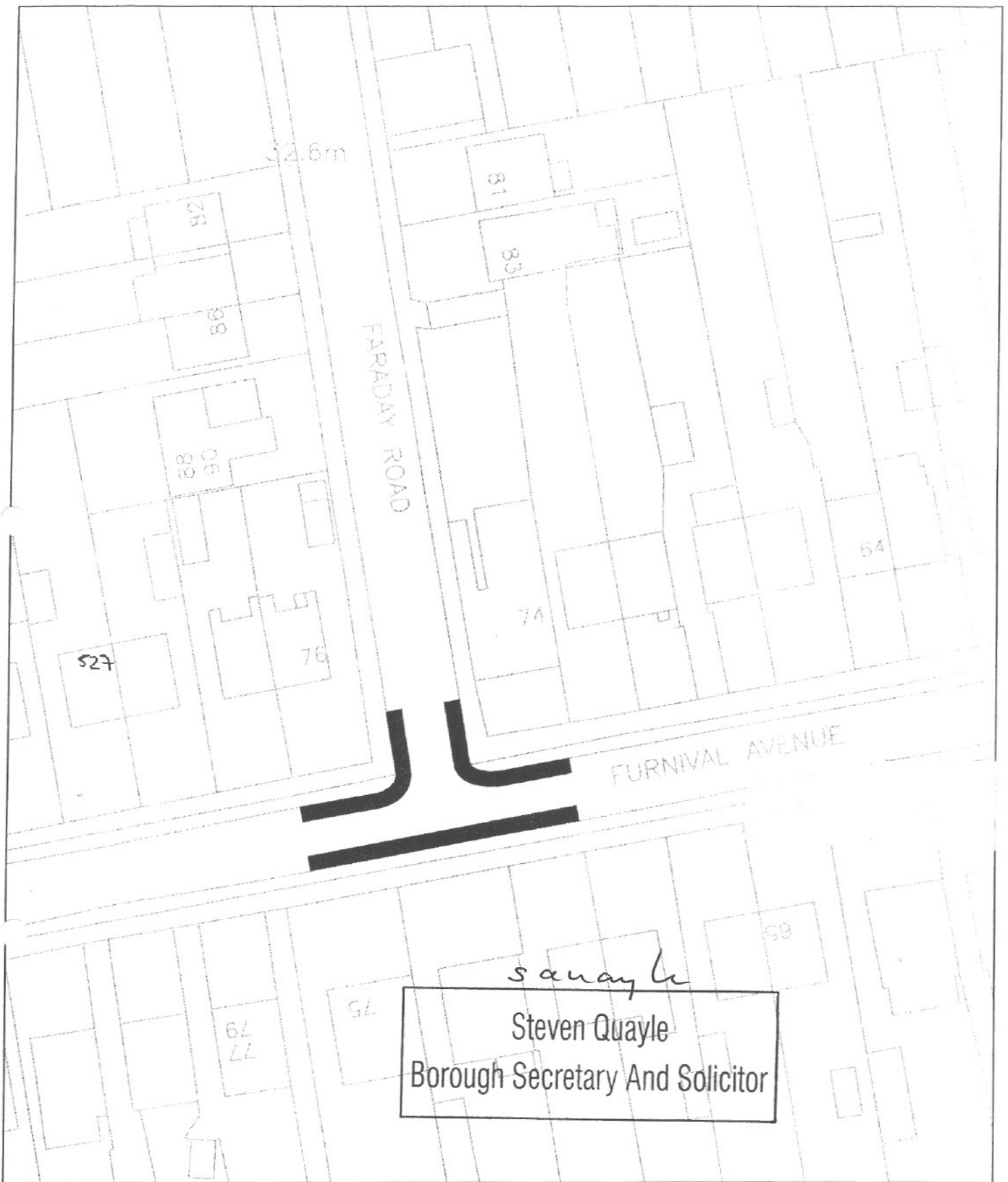


KEY:

— PROPOSED WAITING RESTRICTIONS
(AT ANY TIME)

A	DRN	CHRD	DATE
REV	DRN	CHRD	DATE
FIRST ISSUE			DATE

	Department of the Green and Built Environment	Title Farnburn Avenue & Peel Court Consultation plan Proposed Wating and	Scale 1:500
			Date 27/06/08



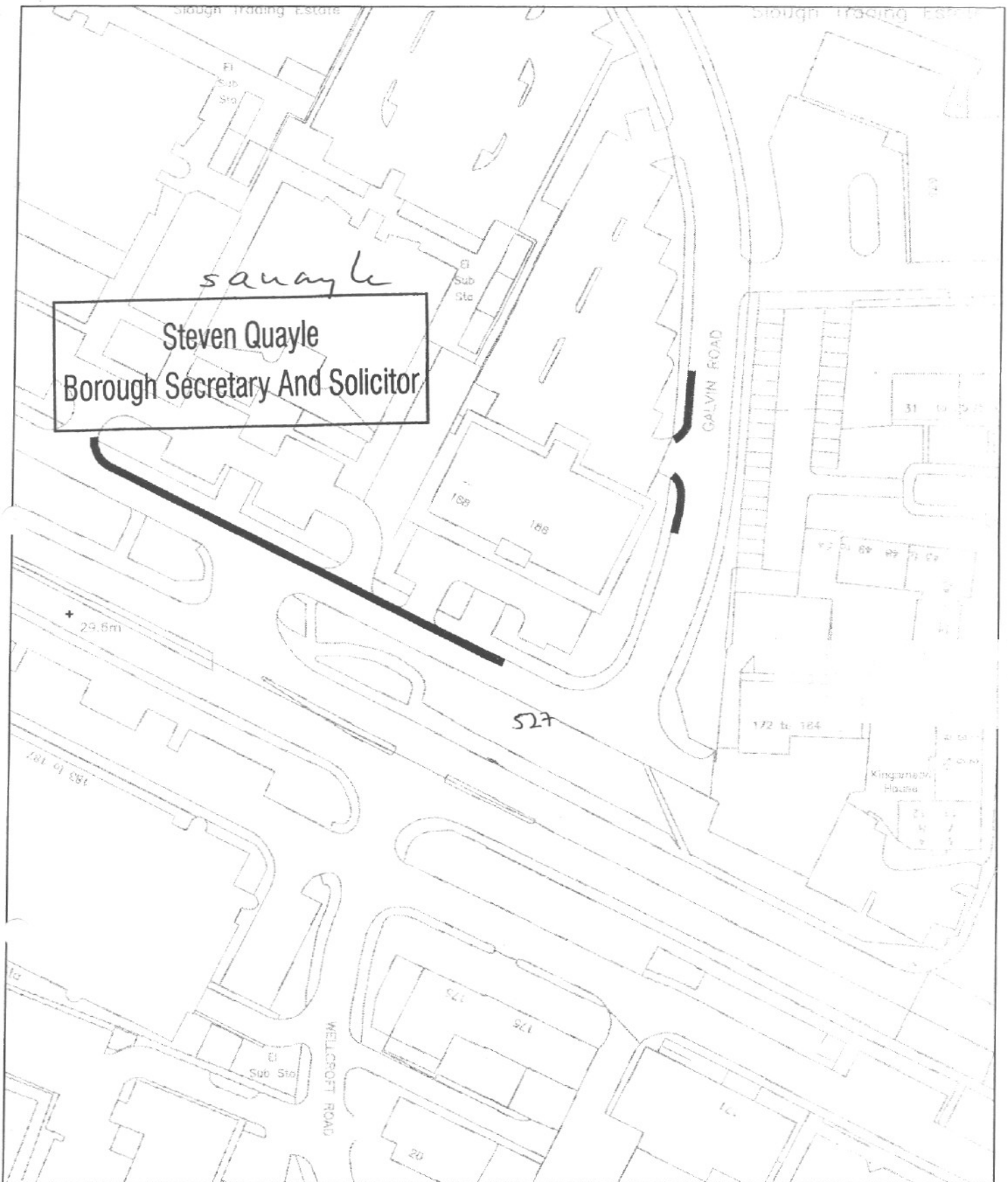
KEY:

— PROPOSED WAITING RESTRICTIONS
(AT ANY TIME)

A	DRN	CHRD
REV	DRN	CHRD

FIRST ISSUE


DATE
DATE

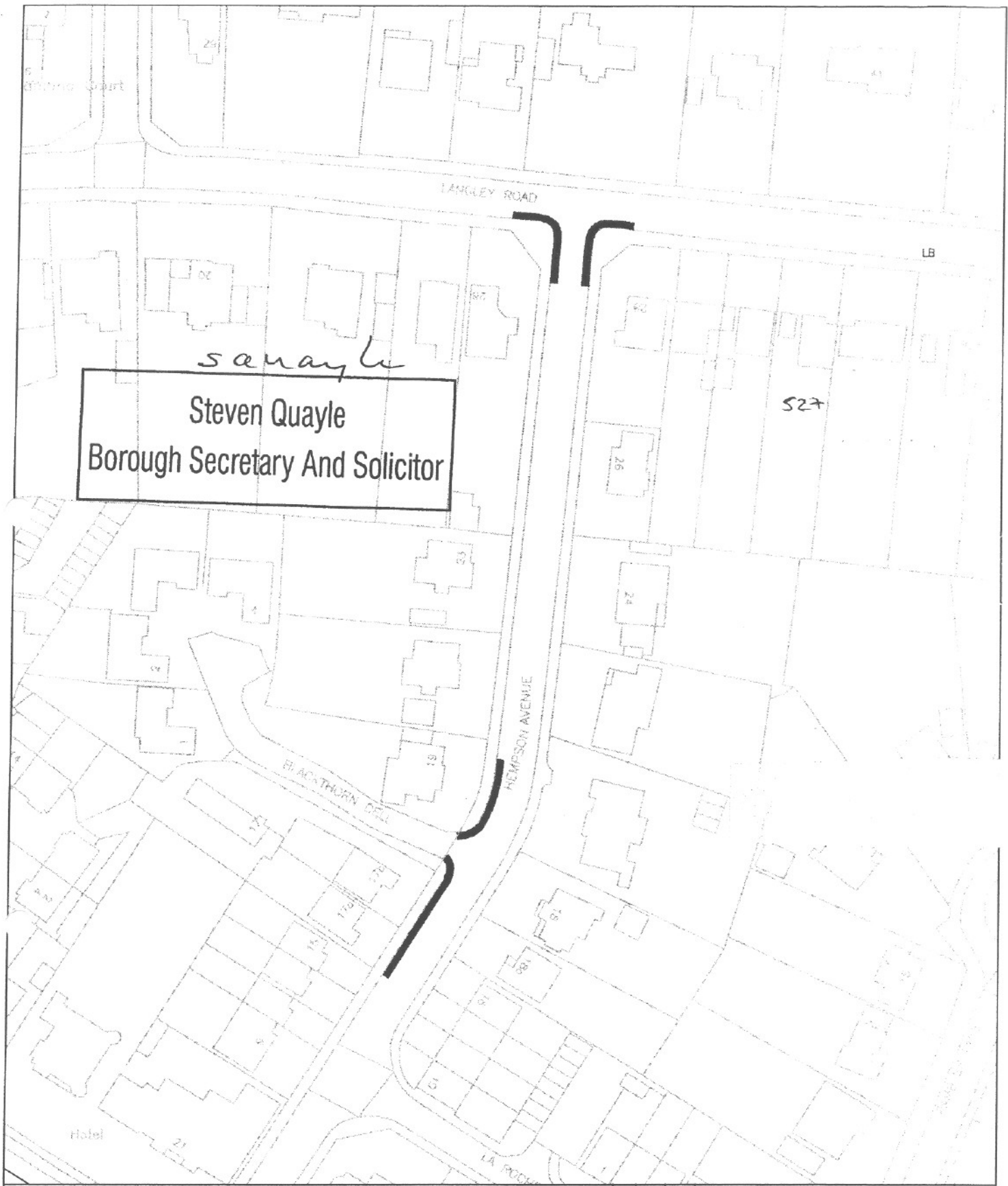


KEY:

— PROPOSED WAITING RESTRICTIONS
(AT ANY TIME)

A	DRN	CHRD						DATE
REV	DRN	CHRD						DATE
FIRST ISSUE								

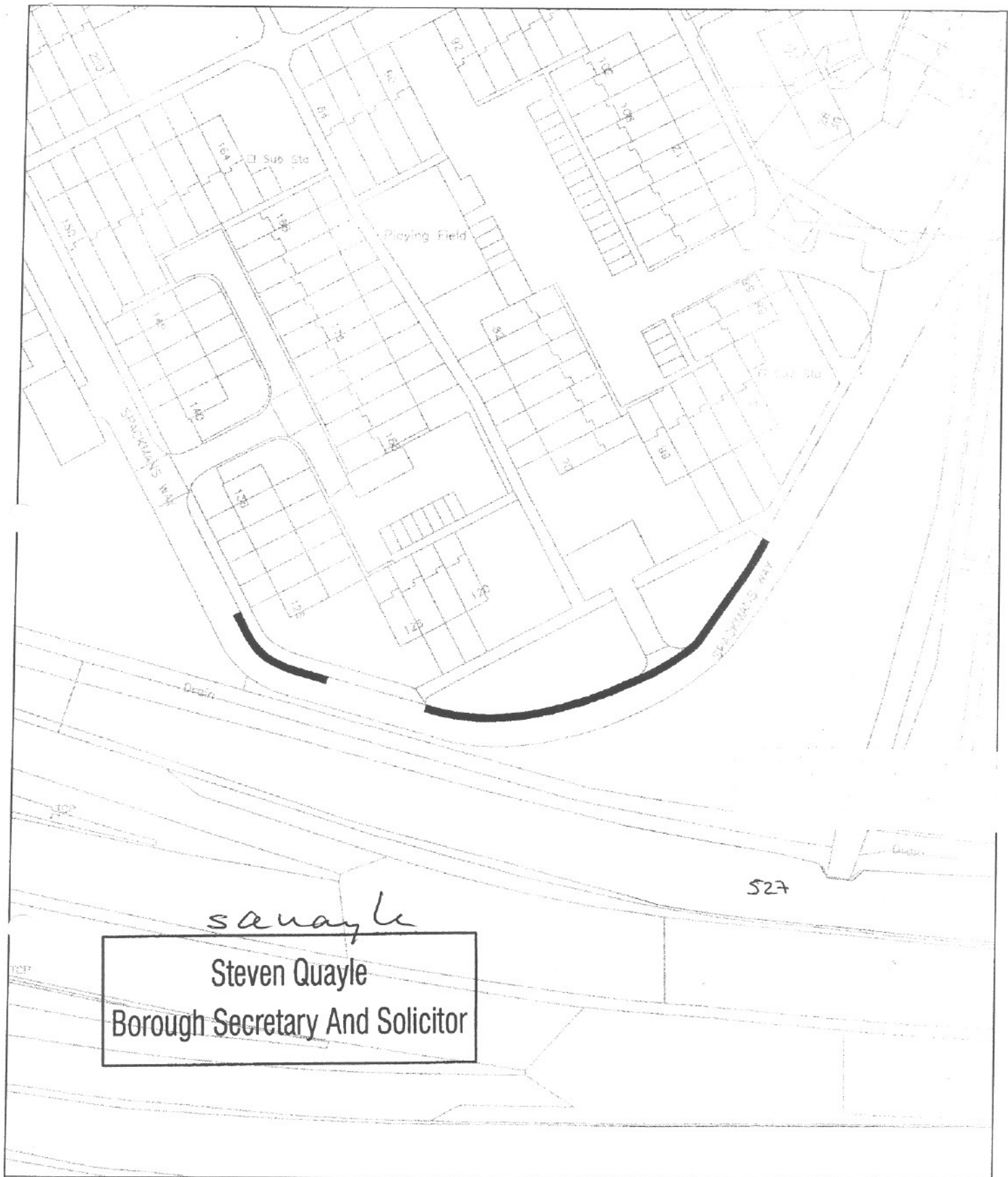
 www.slough.gov.uk	Department of the Green and Built Environment	Title Galvin Way Consultation plan Proposed Wating and	Scale 1:1000
			Date 27/06/08



Langley

Steven Quayle
Borough Secretary And Solicitor

KEY:																																																																																																																																																																																																																																																																																																																																																																																																																																																																																																																																																																																																																																																																																																																																																																																																																																																																																																																																																																																																																																																																																																																																																																																																																																																																																																																																																																																																																																																																																																																																																		
------	--	--	--	--	--	--	--	--	--	--	--	--	--	--	--	--	--	--	--	--	--	--	--	--	--	--	--	--	--	--	--	--	--	--	--	--	--	--	--	--	--	--	--	--	--	--	--	--	--	--	--	--	--	--	--	--	--	--	--	--	--	--	--	--	--	--	--	--	--	--	--	--	--	--	--	--	--	--	--	--	--	--	--	--	--	--	--	--	--	--	--	--	--	--	--	--	--	--	--	--	--	--	--	--	--	--	--	--	--	--	--	--	--	--	--	--	--	--	--	--	--	--	--	--	--	--	--	--	--	--	--	--	--	--	--	--	--	--	--	--	--	--	--	--	--	--	--	--	--	--	--	--	--	--	--	--	--	--	--	--	--	--	--	--	--	--	--	--	--	--	--	--	--	--	--	--	--	--	--	--	--	--	--	--	--	--	--	--	--	--	--	--	--	--	--	--	--	--	--	--	--	--	--	--	--	--	--	--	--	--	--	--	--	--	--	--	--	--	--	--	--	--	--	--	--	--	--	--	--	--	--	--	--	--	--	--	--	--	--	--	--	--	--	--	--	--	--	--	--	--	--	--	--	--	--	--	--	--	--	--	--	--	--	--	--	--	--	--	--	--	--	--	--	--	--	--	--	--	--	--	--	--	--	--	--	--	--	--	--	--	--	--	--	--	--	--	--	--	--	--	--	--	--	--	--	--	--	--	--	--	--	--	--	--	--	--	--	--	--	--	--	--	--	--	--	--	--	--	--	--	--	--	--	--	--	--	--	--	--	--	--	--	--	--	--	--	--	--	--	--	--	--	--	--	--	--	--	--	--	--	--	--	--	--	--	--	--	--	--	--	--	--	--	--	--	--	--	--	--	--	--	--	--	--	--	--	--	--	--	--	--	--	--	--	--	--	--	--	--	--	--	--	--	--	--	--	--	--	--	--	--	--	--	--	--	--	--	--	--	--	--	--	--	--	--	--	--	--	--	--	--	--	--	--	--	--	--	--	--	--	--	--	--	--	--	--	--	--	--	--	--	--	--	--	--	--	--	--	--	--	--	--	--	--	--	--	--	--	--	--	--	--	--	--	--	--	--	--	--	--	--	--	--	--	--	--	--	--	--	--	--	--	--	--	--	--	--	--	--	--	--	--	--	--	--	--	--	--	--	--	--	--	--	--	--	--	--	--	--	--	--	--	--	--	--	--	--	--	--	--	--	--	--	--	--	--	--	--	--	--	--	--	--	--	--	--	--	--	--	--	--	--	--	--	--	--	--	--	--	--	--	--	--	--	--	--	--	--	--	--	--	--	--	--	--	--	--	--	--	--	--	--	--	--	--	--	--	--	--	--	--	--	--	--	--	--	--	--	--	--	--	--	--	--	--	--	--	--	--	--	--	--	--	--	--	--	--	--	--	--	--	--	--	--	--	--	--	--	--	--	--	--	--	--	--	--	--	--	--	--	--	--	--	--	--	--	--	--	--	--	--	--	--	--	--	--	--	--	--	--	--	--	--	--	--	--	--	--	--	--	--	--	--	--	--	--	--	--	--	--	--	--	--	--	--	--	--	--	--	--	--	--	--	--	--	--	--	--	--	--	--	--	--	--	--	--	--	--	--	--	--	--	--	--	--	--	--	--	--	--	--	--	--	--	--	--	--	--	--	--	--	--	--	--	--	--	--	--	--	--	--	--	--	--	--	--	--	--	--	--	--	--	--	--	--	--	--	--	--	--	--	--	--	--	--	--	--	--	--	--	--	--	--	--	--	--	--	--	--	--	--	--	--	--	--	--	--	--	--	--	--	--	--	--	--	--	--	--	--	--	--	--	--	--	--	--	--	--	--	--	--	--	--	--	--	--	--	--	--	--	--	--	--	--	--	--	--	--	--	--	--	--	--	--	--	--	--	--	--	--	--	--	--	--	--	--	--	--	--	--	--	--	--	--	--	--	--	--	--	--	--	--	--	--	--	--	--	--	--	--	--	--	--	--	--	--	--	--	--	--	--	--	--	--	--	--	--	--	--	--	--	--	--	--	--	--	--	--	--	--	--	--	--	--	--	--	--	--	--	--	--	--	--	--	--	--	--	--	--	--	--	--	--	--	--	--	--	--	--	--	--	--	--	--	--	--	--	--	--	--	--	--	--	--	--	--	--	--	--	--	--	--	--	--	--	--	--	--	--	--	--	--	--	--	--	--	--	--	--	--	--	--	--	--	--	--	--	--	--	--	--	--	--	--	--	--	--	--	--	--	--	--	--	--	--	--	--	--	--	--	--	--	--	--	--	--	--	--	--	--	--	--	--	--	--	--	--	--	--	--	--	--	--	--	--	--	--	--	--	--	--	--	--	--	--	--	--	--	--	--	--	--	--	--	--	--	--	--	--	--	--	--	--	--	--	--	--	--	--	--	--	--	--	--	--	--	--	--	--	--	--	--	--	--	--	--	--	--	--	--	--	--	--	--	--	--	--	--	--	--	--	--	--	--	--	--	--	--	--	--	--	--	--	--	--	--	--	--	--	--	--	--	--	--	--	--	--	--	--	--	--	--	--	--	--	--	--	--	--	--	--	--	--	--	--	--	--	--	--	--	--	--	--	--	--	--	--	--	--	--	--	--	--	--	--	--	--	--	--	--	--	--	--	--	--	--	--	--	--	--	--	--	--	--	--	--	--	--	--	--	--	--	--	--	--	--	--	--	--	--	--	--	--	--	--	--	--	--	--	--	--	--	--	--	--	--	--	--	--	--	--	--	--	--	--	--	--	--	--	--	--	--	--	--	--	--	--	--	--	--	--	--	--	--	--	--	--	--	--	--	--	--	--	--	--	--	--	--	--	--	--	--	--	--	--	--	--	--	--	--	--	--	--	--	--	--	--	--	--	--	--	--	--	--	--	--	--	--	--	--	--	--	--	--	--	--	--	--	--	--	--	--	--	--	--	--	--	--	--	--	--	--	--	--	--	--	--	--	--	--	--	--	--	--	--	--	--	--	--	--	--	--	--	--	--	--	--	--	--	--	--	--	--	--	--	--	--	--	--	--	--	--	--	--	--	--	--	--	--	--	--	--	--	--	--	--	--	--	--	--	--	--	--	--	--	--	--	--	--	--	--	--	--	--	--	--	--	--	--	--	--	--	--	--	--	--	--	--	--	--	--	--	--	--	--	--	--	--	--	--	--	--	--	--	--	--	--	--	--	--	--	--	--	--	--	--	--	--	--	--	--	--	--	--	--	--	--	--	--	--	--	--	--	--	--	--	--	--	--	--	--	--	--	--	--	--	--	--	--	--	--	--	--	--	--	--	--	--	--	--	--	--	--	--	--	--	--	--	--	--	--	--	--	--	--	--	--	--	--	--	--	--	--	--	--	--	--	--	--	--



s Quayle

Steven Quayle
Borough Secretary And Solicitor

KEY:

— PROPOSED WAITING RESTRICTIONS
(AT ANY TIME)

A	DRN	CHKD		DATE
REV	DRN	CHKD	FIRST ISSUE	DATE

