

**BOROUGH OF ROCHDALE
((CIVIL ENFORCEMENT OF TRAFFIC CONTRAVENTIONS) (VARIOUS STREETS)
(ROCHDALE TOWNSHIP) ORDER 2008)
(AMENDMENT) (NO. 61) ORDER 2012**

MELLOR STREET, ROCHDALE

The Rochdale Borough Council, in exercise of its powers under Sections 1(1), 2 and 4 of the Road Traffic Regulation Act 1984 ("the Act") and of all other enabling powers, and after consultation with the Chief Officer of Police in accordance with Section 124(1) and paragraph 20(1) of Part III of Schedule 9 to the Act, hereby make the following Order:-

1. This Order may be cited as the Borough of Rochdale ((Civil Enforcement of Traffic Contraventions) (Various Streets) (Rochdale Township) Order 2008) (Amendment) (No.61) Order 2012 and shall come into operation on 2nd January 2013.
2. The Borough of Rochdale (Civil Enforcement of Traffic Contraventions) (Various Streets) (Rochdale Township) Order 2008 is hereby amended by inserting the wording shown in the Schedule to this Order.
3. The Interpretation Act 1978 shall apply for the interpretation of this Order as it applies for the interpretation of an Act of Parliament.

SCHEDULE

**Schedule No. 1.1
No Waiting At Any Time**

Mellor Street, Spotland & Falinge Ward

- n(i) the westerly side from a point 29 metres south of its junction with Bridgefold Road to a point 38 metres south of its junction with Bridgefold Road.

**Schedule No. 6.4
Cycle Lane Mandatory**

Mellor Street, Spotland & Falinge Ward

- n(i) the westerly side from a point 38 metres south of its junction with Bridgefold Road to a point 240 metres south of its junction with Bridgefold Road.

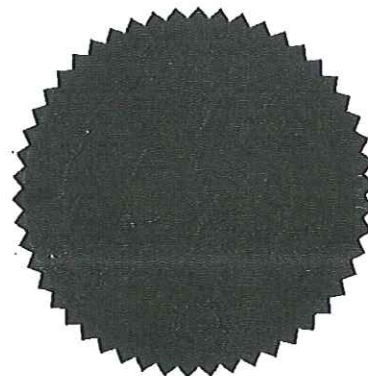
Dated this 10th day of December 2012

THE COMMON SEAL of THE ROCHDALE)

BOROUGH COUNCIL was hereunto affixed)

in the presence of:


 Authorised Signatory 

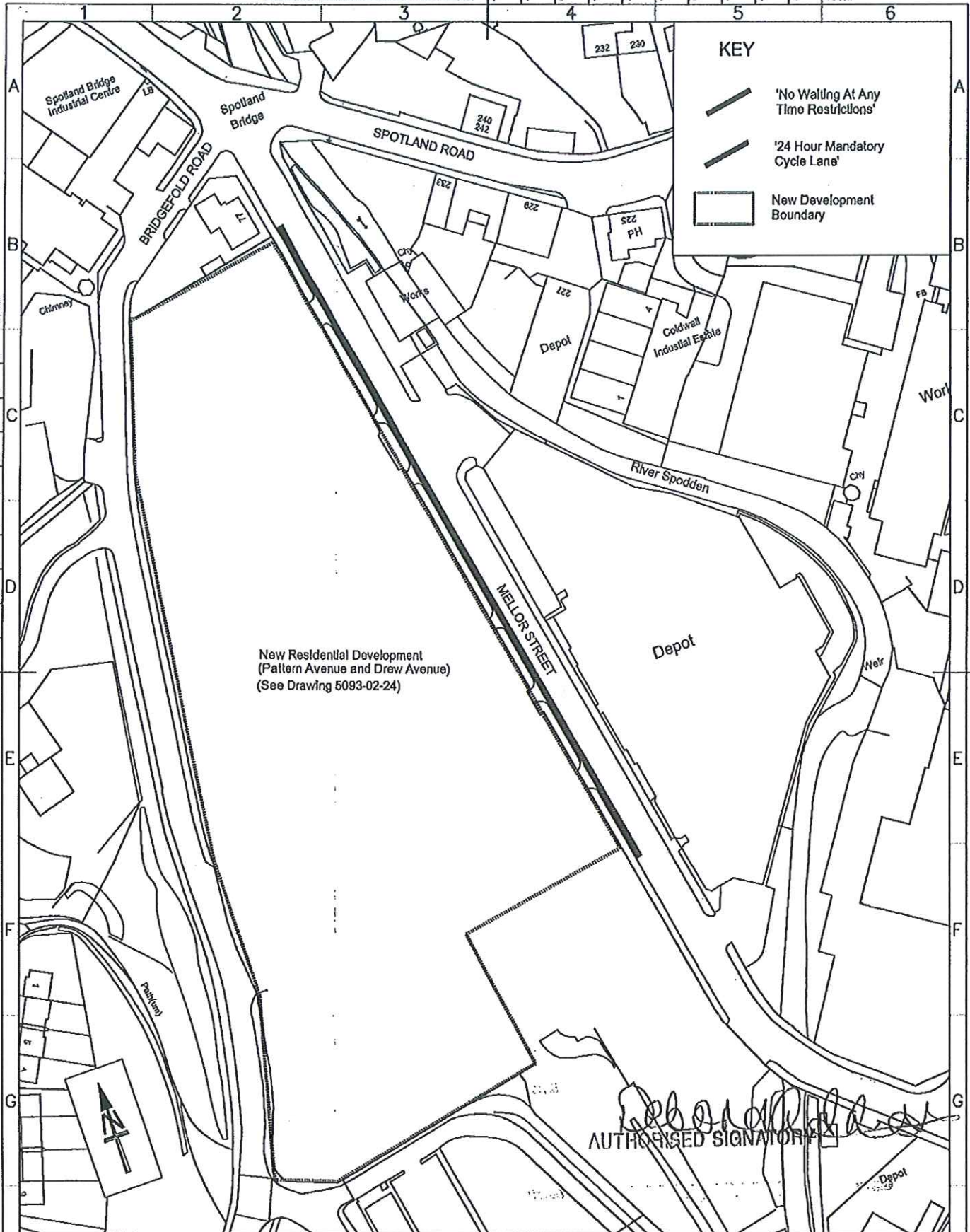


TURNER IN SEAL BOOK
 37123

SCALE WITH CAUTION AS DISTORTION CAN OCCUR 0 1 2 3 4 5 6 7 8 9 10m

KEY

-  'No Waiting At Any Time Restrictions'
-  '24 Hour Mandatory Cycle Lane'
-  New Development Boundary



New Residential Development
(Pattern Avenue and Drew Avenue)
(See Drawing 5093-02-24)

Rebecca [Signature]
AUTHORISED SIGNATORY

impact
Rochdale Metropolitan Borough Council
working in partnership with Mouchel and Agilys to support regeneration

HIGHWAYS & ENGINEERING SERVICE
Ewan G. Wilson

HIGHWAY NETWORK OPERATIONS
Karanjit S. Foz

Project
**MELLOR STREET
ROCHDALE
WAITING RESTRICTIONS**

Title
PROPOSALS

Drawn CJC	Check'd & Appr'd	Safety Audit Check
Scale 1:1000	Date 31/05/12	
Dwg No. A3/H60/1091/003		

A3