

BOROUGH OF ROCHDALE
((CIVIL ENFORCEMENT OF TRAFFIC CONTRAVENTIONS) (VARIOUS
STREETS)
(PENNINES TOWNSHIP) ORDER 2008)
(AMENDMENT) (NO. 19) ORDER 2011

MILNROW AREA, ROCHDALE

The Rochdale Borough Council, in exercise of its powers under Sections 1(1), 2 and 4 of the Road Traffic Regulation Act 1984 ("the Act") and of all other enabling powers, and after consultation with the Chief Officer of Police in accordance with Section 124(1) and paragraph 20(1) of Part III of Schedule 9 to the Act, hereby make the following Order:-

1. This Order may be cited as the Borough of Rochdale ((Civil Enforcement of Traffic Contraventions) (Various Streets) (Pennines Township) Order 2008) (Amendment) (No. 19) Order 2011 and shall come into operation on 1st December 2011.
2. The Borough of Rochdale (Civil Enforcement of Traffic Contraventions) (Various Streets) (Pennines Township) Order 2008 is hereby amended by inserting the wording shown in Schedule 1 to this Order.
3. Those parts of the Borough of Rochdale (Civil Enforcement of Traffic Contraventions) (Various Streets) (Pennines Township) Order 2008, as shown in Schedule 2 to this Order be hereby revoked.
4. The Interpretation Act 1978 shall apply for the interpretation of this Order as it applies for the interpretation of an Act of Parliament.

SCHEDULE 1

Schedule No 1.1
No Waiting At Any Time

Albert Street, Milnrow and Newhey Ward

- n (i) the southerly side from its junction with Charles Lane for a distance of 12 metres in a north easterly direction.

Bentgate Street, Milnrow and Newhey Ward

- (i) the south easterly side from its junction with Newhey Road for a distance of 30 metres in a south westerly direction.
- (ii) the north westerly side from its junction with Newhey Road for a distance of 24 metres in a south westerly direction.

Bridge Street, Milnrow and Newhey Ward

- n (i) the northerly side from its junction with Shore Street to its junction with Kiln Lane.

- n (ii) the southerly side from its junction with Harbour Lane North to its junction with Dale Street.

Bridge Street, Smallbridge and Firgrove Ward

- n (i) the northerly side from its junction with Rochdale Road to its junction with Shore Street.
- n (ii) the southerly side from its junction with Elizabethan Way to its junction with Harbour Lane North.

Charles Lane, Milnrow and Newhey Ward

- n (i) the northerly side from its junction with Albert Street for a distance of 41 metres in a south easterly direction.
- n (ii) the southerly side from its junction with Newhey Road to a point 10 metres south east of its junction with Church Terrace.

Dale Street, Milnrow and Newhey Ward

- n (i) the north easterly side from its junction with Kiln Lane to a point 74 metres north west of its junction with Chapel Gate.
- n (ii) the north easterly side from its junction with Chapel Gate for a distance of 31 metres in a north westerly direction.
- n (iii) the north easterly side from its junction with Chapel Gate for a distance of 47 metres in a south easterly direction.
- n (iv) the north easterly side from a point 71 metres south east of its junction with Chapel Gate for a distance of 9 metres in a south easterly direction.
- n (v) the north easterly side from its junction with Smith Hill for a distance of 45 metres in a north westerly direction.
- n (vi) the south westerly side from its junction with Bridge Street to its junction with Edmund Street.
- n (vii) the south westerly side from its junction with Edmund Street for a distance of 15 metres in a south easterly direction.
- n (viii) the south westerly side from a point 24 metres south east of its junction with Edmund Street to a point 76 metres north west of its junction with Whitworth Street.
- n (ix) the south westerly side from its junction with Whitworth Street for a distance of 39 metres in a north westerly direction.
- n (x) the south westerly side from its junction with Whitworth Street to a point 108 metres north west of its junction with Station Road.

- n (xi) the south westerly side from its junction with Station Road for a distance of 67 metres in a north westerly direction.
- n (xii) the south westerly side from its junction with Station Road for a distance of 45 metres in a south easterly direction.
- n (xiii) the south westerly side from its junction with Leach Street for a distance of 15 metres in a south easterly direction.

Edmund Street, Milnrow and Newhey Ward

- n (i) the north westerly side from its junction with Dale Street for a distance of 16 metres in a south westerly direction.
- n (ii) the south easterly side from its junction with Dale Street for a distance of 24 metres in a south westerly direction.

Elizabethan Way, Smallbridge and Firgrove Ward

- n (i) both sides from its junction with Bridge Street for a distance of 25 metres in a south easterly direction.

Elizabethan Way, Milnrow and Newhey Ward

- n(i) south westerly side from its junction with Bentgate Street for a distance of 80 metres in a north westerly direction.

Harbour Lane North, Milnrow and Newhey Ward

- n (i) both sides from its junction with Bridge Street to a point 169 metres north west of its junction with Whitworth Street.

Kiln Lane, Milnrow and Newhey Ward

- n (i) the north westerly side from its junction with Bridge Street to a point opposite 19 metres north east of its junction with Hursted Road.
- n (ii) the south easterly side from its junction with Dale Street to a point 16 metres south west of its junction with Hursted Road.
- n (iii) the south easterly side from a point 15 metres north east of its junction with Crossgates Road for a distance of 25 metres in a north easterly direction.

Kiln Lane Service Road, Milnrow and Newhey Ward

- n (i) the north easterly side from its junction with Dale Street for a distance of 10 metres in a north westerly direction.
- n (ii) the south westerly side from a point 29 metres north west of its junction with Dale Street to its termination in a north westerly direction, a distance of 7 metres.

Ladyhouse Lane, Milnrow and Newhey Ward

- n (i) the north westerly side from a point 15 metres south west of its junction with Lambourne Grove to a point 15 metres north east of its junction with Lambourne Grove.

Lambourne Grove, Milnrow and Newhey Ward

- n (i) the north easterly side from its junction with Ladyhouse Lane to its junction with Tydeman Walk.

Leach Street, Milnrow and Newhey Ward

- n (i) the south easterly side from its junction with Dale Street for a distance of 8 metres in a south westerly direction.
- n (ii) the south easterly side from a point 27 metres south west of its junction with Dale Street for a distance of 11 metres in a south westerly direction.
- n (iii) the south easterly side from its junction with Stonefield Street to a point 44 metres south west of its junction with Dale Street.

New Street, Milnrow and Newhey Ward

- n (i) the northerly side from its junction with Newhey Road for a distance of 17 metres in a north easterly direction.
- n (ii) the southerly side from its junction with Newhey Road to its junction with Clegg Street.

The Central Island situated between Albert Street and Charles Lane at their junction with Newhey Road, Milnrow and Newhey Ward.

- n (i) for its full circumference.

Newhey Road, Milnrow and Newhey Ward

- n (i) the north easterly side from its junction with Charles Lane to its junction with New Street.
- n (ii) the north easterly side from its junction with New Street to its junction with Sheriff Street.
- n (iii) the north easterly side from its junction with Sheriff Street to its junction with Royds Street.
- n (iv) the north easterly side from its junction with Royds Street to a point 193 metres south east of its junction with Royds Street.
- n (v) the north easterly side from a point 25 metres north west of its junction with Bentfield Crescent to a point 130 metres north west of its junction with Bentfield Crescent.

- n (vi) the south westerly side from its junction with Stone Street for a distance of 15 metres in a north westerly direction.
- n (vii) the south westerly side from a point 72 metres south east of its junction with Stone Street to a point 151 metres south east of its junction with Stone Street.
- n (viii) the south westerly side from a point 72 metres north west of its junction with Ladyhouse Lane to a point 126 metres north west of its junction with Ladyhouse Lane.
- n (ix) the south westerly side from a point 10 metres north west of its junction with Schofield Street to a point 15 metres south east of its junction with Schofield Street.
- n (x) the south westerly side from a point 45 metres south east of its junction with Schofield Street for a distance of 126 metres in a south easterly direction.
- n (xi) the south westerly side from its junction with Bentgate Street for a distance of 126 metres in a south easterly direction.

Rochdale Road, Smallbridge and Firgrove Ward

- (i) the north easterly side from its junction with Bridge Street to its junction with Whitehead Street.
- (ii) the south westerly side from its junction with Wesley Street to its junction with Moorhouse Fold.
- (iii) the south westerly side from its junction with Moorhouse Fold to its junction with Whitehead Street.

Royds Street, Milnrow and Newhey Ward

- n (i) the westerly side from its junction with Newhey Road for a distance of 10 metres in a northerly direction.
- n (ii) the easterly side from its junction with Newhey Road for a distance of 19 metres in a northerly direction.

Schofield Close, Milnrow and Newhey Ward

- n (i) both sides from its junction with Smith Hill for a distance of 42 metres in a north westerly direction.

Sheriff Street, Milnrow and Newhey Ward

- n (i) the northerly side from its junction with Newhey Road for a distance 23 metres in an easterly direction.
- n (ii) the southerly side from its junction with Newhey Road to its junction with Royds Street.

Shore Street, Smallbridge and Firgrove Ward

- n (i) both sides from its junction with Bridge Street for a distance of 10 metres in a north westerly direction.

Silver Hill, Milnrow and Newhey Ward

- n (i) the north easterly side from its junction with Kiln Lane for a distance of 15 metres in a north westerly direction.
- n (ii) the south westerly side from its junction with Kiln Lane to its junction with Lowood Close.

Smith Hill, Milnrow and Newhey Ward

- n (i) the north westerly side from a point 34 metres north east of its junction with Dale Street to a point 25 metres south of its junction with Major Street.
- n (ii) the south easterly side from its junction with Harmony Street for a distance of 85 metres in a northerly direction.

Station Road, Milnrow and Newhey Ward

- n (i) the south easterly side from its junction with Dale Street for a distance of 37 metres in a south westerly direction.

Stone Street, Milnrow and Newhey Ward

- n (i) the north westerly side from its junction with Newhey Road for a distance of 32 metres in a south westerly direction.
- n (ii) the south easterly side from its junction with Newhey Road for a distance of 12 metres in a south westerly direction.

Schedule No 2.2

No Waiting, Mon–Sat, 8am–6pm

Newhey Road, Milnrow and Newhey Ward

- n (i) the westerly side from a point 171 metres south east of its junction with Schofield Street to a point 212 metres south east of its junction with Schofield Street.

Stone Street, Milnrow and Newhey Ward

- n (i) the north westerly side from a point 32 metres south west of its junction with Newhey Road to its junction with Stonefield Street.

Schedule 2.24

No Waiting Mon-Fri 8.00-9.30am and 3.00-5.00pm.

Kiln Lane, Milnrow and Newhey Ward

- n (i) the north westerly side from a point 17 metres north east of its junction with Wildhouse Lane to a point 130 metres north east of its junction with Wildhouse Lane.

Schedule No 3.4

Waiting Limited Mon-Sat 8am-6pm 1 Hour, No Return Within 1 Hour.

Leach Street, Milnrow and Newhey Ward

- n (i) the south easterly side from a point 8 metres south west of its junction with Dale Street for a distance of 19 metres in a south westerly direction.
- n (ii) the south easterly side from a point 38 metres south west of its junction with Dale Street for a distance of 6 metres in a south westerly direction.

Schedule No 3.8

Waiting Limited Mon-Sat 8am-6pm 30 mins, No Return Within 1 Hour.

Kiln Lane Service Road, Milnrow and Newhey Ward

- n (i) north easterly side from a point 10 metres north west of its junction with Dale Street to its termination in a north westerly direction, a distance of approx. 29 metres.

Schedule No 3.20

Waiting Limited Mon-Sat 8am-6pm 2 Hours, Return Prohibited Within 1 Hour.

Dale Street, Milnrow and Newhey Ward

- n (iv) the north easterly side from a point 31 metres north west of its junction with Chapel Gate to a point 74 metres north west of its junction with Chapel Gate.
- n (v) the north easterly side from a point 47 metres south east of its junction with Chapel Gate to a point 64 metres south east of its junction with Chapel Gate.
- n (vi) the south westerly side from a point 15 metres south east of its junction with Edmund Street for a distance of 9 metres in a south easterly direction.

Schedule No 5.13
No Loading Mon-Fri 8.00-9.30am and 3.00-5.00pm

Kiln Lane, Milnrow and Newhey Ward

- n (i) the north westerly side from a point 17 metres north east of its junction with Wildhouse Lane to a point 130 metres north east of its junction with Wildhouse Lane.

Schedule No 5.9
No Loading Mon-Sat, 8am -6pm

Stone Street, Milnrow and Newhey Ward

- n (i) the north westerly side from its junction with Newhey Road to its junction with Stonefield Street
- n (ii) the south easterly side from its junction with Newhey Road for a distance of 12 metres in a south westerly direction

Schedule No 8.1
School Zigzag Mon-Fri 8am-5pm No Stopping On School Entrance
Markings

Kiln Lane, Milnrow and Newhey Ward

- (i) the northerly side from a point 130 metres north east of its junction with Wildhouse Lane for a distance of 69.12 metres in an easterly direction.

Schedule No 9.1
Disabled Parking Place 24hr any day

Dale Street, Milnrow and Newhey Ward

- n (ii) the north easterly side from a point 64 metres south east of its junction with Chapel Gate to a point 71 metres south east of its junction with Chapel Gate.

SCHEDULE 2

Schedule No 1.1
No Waiting At Any Time

Bridge Street, Smallbridge & Firgrove Ward

- (i) the north side from its junction with Halliwell Street to a point 3 metres east of its junction with Halliwell Street.
- (ii) the north side from its junction with Halliwell Street to a point 3 metres west of its junction with Halliwell Street.

Harmony Street, Milnrow & Newhey Ward

- (i) and (ii) (duplicate) both sides from its junction with Smith Hill to a point 27 metres north of its junction with Smith Hill.

Schedule No 2.2

No Waiting, Mon – Sat, 8am – 6pm

Albert Street, Milnrow and Newhey Ward

- (i) and (ii) (duplicate) the south side from its junction with Charles Lane to a point 13 metres east of its junction with Charles Lane.

Bridge Street, Milnrow and Newhey Ward

- (i) the north side from its junction with Kiln Lane to its junction with Shore Street.
- (ii) and (iii) (duplicate) the south side from its junction with Harbour Lane North to its junction with Dale Street.

Bridge Street, Smallbridge and Firgrove Ward

- (i) the north side from its junction with Shore Street to a point 13 metres west of its junction with Shore Street.
- (ii) the north side from its junction with Nall Street to its junction with Kiln Lane.
- (iii) the south side from its junction with Harbour Lane North to its junction with Elizabethan Way.

Charles Lane, Milnrow and Newhey Ward

- (i) and (ii) (duplicate) the north side from its junction with Albert Street to a point 21 metres east of its junction with Albert Street.
- (iii) and (iv) (duplicate) the south side from its junction with Newhey Road Access Road to a point 27 metres east of its junction with Newhey Road Access Road.

Dale Street, Milnrow and Newhey Ward

- (i) and (iv) (duplicate) the north-east side from its junction with Smith Hill to a point 45 metres north-west of its junction with Smith Hill.
- (ii) and (v) (duplicate) the north-east side from its junction with Kiln Lane to its junction with Chapel Gate.
- (iii) and (vi) (duplicate) the north-east side from its junction with Chapel Gate to a point 80 metres south-east of its junction with Chapel Gate.
- (vii) and (xiv) (duplicate) the south-west side from its junction with Station Road to a point 45 metres south-east of its junction with Station Road.

- (viii) and (xv) (duplicate) the south-west side from its junction with Leach Street to a point 15 metres south-east of its junction with Leach Street.
- (ix) and (xvi) (duplicate) the south-west side from its junction with Station Road to a point 67 metres north-west of its junction with Station Road.
- (x) and (xvii) (duplicate) the south-west side from its junction with Whitworth Street to a point 108 metres north-west of its junction with Station Road.
- (xi) and (xviii) (duplicate) the south-west side from its junction with Whitworth Street to a point 39 metres north-west of its junction with Whitworth Street.
- (xii) and (xix) (duplicate) the south-west side from its junction with Edmund Street to a point 15 metres south-east of its junction with Edmund Street.
- (xiii) and (xx) (duplicate) the south-west side from its junction with Bridge Street to its junction with Edmund Street.

Edmund Street, Milnrow and Newhey Ward

- (i) and (ii) (duplicate) the east side from its junction with Dale Street to a point 19 metres south-west of its junction with Dale Street.
- (iii) and (iv) (duplicate) the west side from its junction with Dale Street to a point 17 metres south-west of its junction with Dale Street.

Harbour Lane North, Milnrow and Newhey Ward

- (i), (ii) and (iii) (duplicates) both sides from its junction with Bridge Street to a point 15 metres south of the northerly gable of Renold's (105 metres).

Leach Street, Milnrow and Newhey Ward

- (iii) and (v) (duplicate) the south side from its junction with Dale Street to a point 8 metres west of its junction with Dale Street.
- (iv) and (vi) (duplicate) the south side from its junction with Stonefield Street to a point 12 metres east of its junction with Stonefield Street.

New Street, Milnrow and Newhey Ward

- (i) and (ii) (duplicate) the north side from its junction with Newhey Road to a point 17 metres east of its junction with Newhey Road.
- (iii) and (iv) (duplicate) the south side from its junction with Newhey Road to its junction with Clegg Street.

Newhey Road Central Island (between Albert Street And Charles Lane), Milnrow & Newhey Ward

- (i) and (ii) (duplicate) for its full circumference.

Newhey Road, Milnrow and Newhey Ward

- (i) and (iv) (duplicate) the east side from its junction with Sheriff Street to its junction with Royds Street.
- (ii) and (v) (duplicate) the east side from its junction with Sheriff Street to its junction with New Street.
- (iii) and (vi) (duplicate) the east side from its junction with Charles Lane to its junction with New Street.
- (vii) and (viii) (duplicate) the south-west side from its junction with Stone Street to a point 15 metres north-east of its junction with Stone Street.

Royds Street, Milnrow and Newhey Ward

- (i) and (ii) (duplicate) the east side from its junction with Newhey Road to a point 23 metres north of its junction with Newhey Road.
- (iii) and (iv) (duplicate) the west side from its junction with Newhey Road to a point 8 metres north of its junction with Newhey Road.

Sheriff Street, Milnrow and Newhey Ward

- (i) and (ii) (duplicate) the north side from its junction with Newhey Road to a point 16 metres east of its junction with Newhey Road.
- (i) and (iv) (duplicate) the south side from its junction with Newhey Road to a point 14 metres east of its junction with Newhey Road.

Stone Street, Milnrow and Newhey Ward

- (i) and (ii) (duplicate) the north side from its junction with Newhey Road to its junction with Stonefield Street.
- (iii) and (iv) (duplicate) the south side from its junction with Newhey Road to a point 11 metres west of its junction with Newhey Road.

Schedule No 2.3

No Waiting, Mon – Sat, 8am – 5pm

Kiln Lane, Milnrow and Newhey Ward

- (i) and (ii) (duplicate) the north side from a point 17 metres north east of its junction with Wildhouse Lane to a point 130 metres north east of its junction with Wildhouse Lane.

Schedule No 2.4

No Waiting, Mon – Fri, 8am – 6pm

Newhey Road, Milnrow and Newhey Ward

- (i) and (ii) (duplicate) the north-east side from its junction with Royds Street for a distance of 193 metres in a southerly direction.

Schedule No 2.22

No Waiting Mon-Fri 8.00am-6.30pm And Sat 8.00am-1.00pm

Bentgate Street, Milnrow and Newhey Ward

- (i) and (ii) (duplicate) the east side from its junction with Newhey Road to a point 29 metres south of its junction with Newhey Road.

Bridge Street, Smallbridge and Firgrove Ward

the north side from its junction with Nall Street to its junction with Rochdale Road.

Newhey Road, Milnrow and Newhey Ward

- (i) and (ii) (duplicate) the north east side from a point 25 metres north west of its junction with Bentfield Crescent to a point 130 metres north west of its junction with Bentfield Crescent.
- (iii) and (iv) (duplicate) the south west side from its junction with Bentgate Street to a point 126 metres south east of its junction with Bentgate Street.

Rochdale Road, Smallbridge and Firgrove Ward

- (v) the north-east side from its junction with Bridge Street to its junction with Whitehead Street.
- (xvii) the west side from its junction with Wesley Street to its junction with Moorhouse Fold.
- (xviii) the west side from its junction with Moorhouse Fold to its junction with Whitehead Street.

Schedule No 3.4

Waiting Limited Mon-Sat 8am-6pm 1 Hour, No Return Within 1 Hour

Leach Street, Milnrow and Newhey Ward

- (i) and (ii) (duplicate) the south side from a point 8 metres east of its junction with Dale Street for a distance of 34 metres in an easterly direction.

Schedule No 8.1

School Zigzag Mon-Fri 8am-5pm No Stopping On School Entrance Markings

Kiln Lane, Milnrow and Newhey Ward

- (i) and (ii) (duplicate) the north side from a point 130 metres north east of its junction with Wildhouse Lane for a distance of 70 metres in an easterly direction outside Cross Gates Primary School.

Schedule No 9.1
Disabled Parking Place 24hr any day

Dale Street, Milnrow and Newhey Ward

- n (i) the south westerly side from its junction with Beal Terrace to a point 15 metres south east of its junction with Edmund Street.

Dated this 22nd day of November 2011

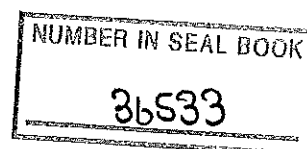
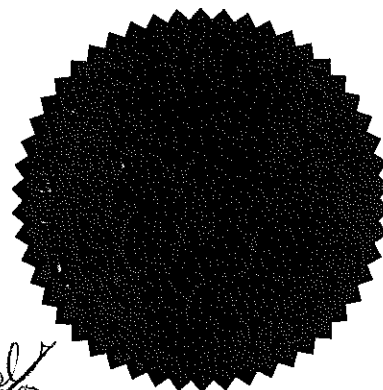
THE COMMON SEAL of THE ROCHDALE)

BOROUGH COUNCIL was hereunto affixed)

in the presence of:

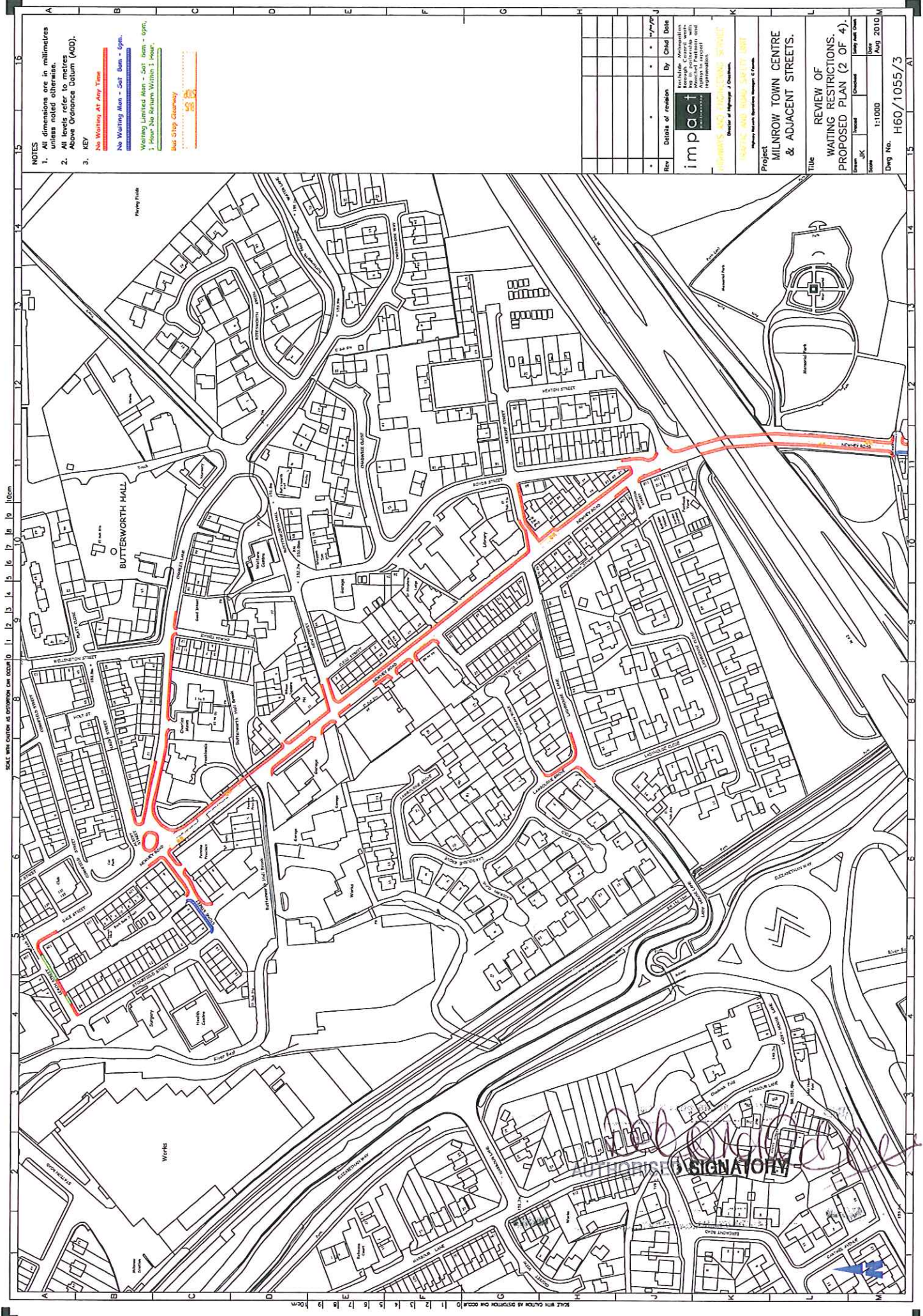
)

Authorised Signatory



tro73a





- NOTES**
1. All dimensions are in millimetres unless noted otherwise.
 2. All levels refer to metres Above Ordnance Datum (AOD).
 3. **KEY**

- No Waiting At Any Time
- No Waiting At Any Time
- No Waiting At Any Time
- Waiting Limited Area - 30m - 60m
- 1 Hour No Waiting Within 1 Hour
- Blue Stop Queueing

| Rev | Details of revision | By | Check Date |
|-----|---------------------|---------------|------------|
| 1 | Initial design | J. Chatterton | 10/10/10 |
| 2 | Revised design | J. Chatterton | 10/10/10 |
| 3 | Final design | J. Chatterton | 10/10/10 |

Project
MILNROW TOWN CENTRE
& ADJACENT STREETS.

Title
REVIEW OF
WAITING RESTRICTIONS.
PROPOSED PLAN (2 OF 4).

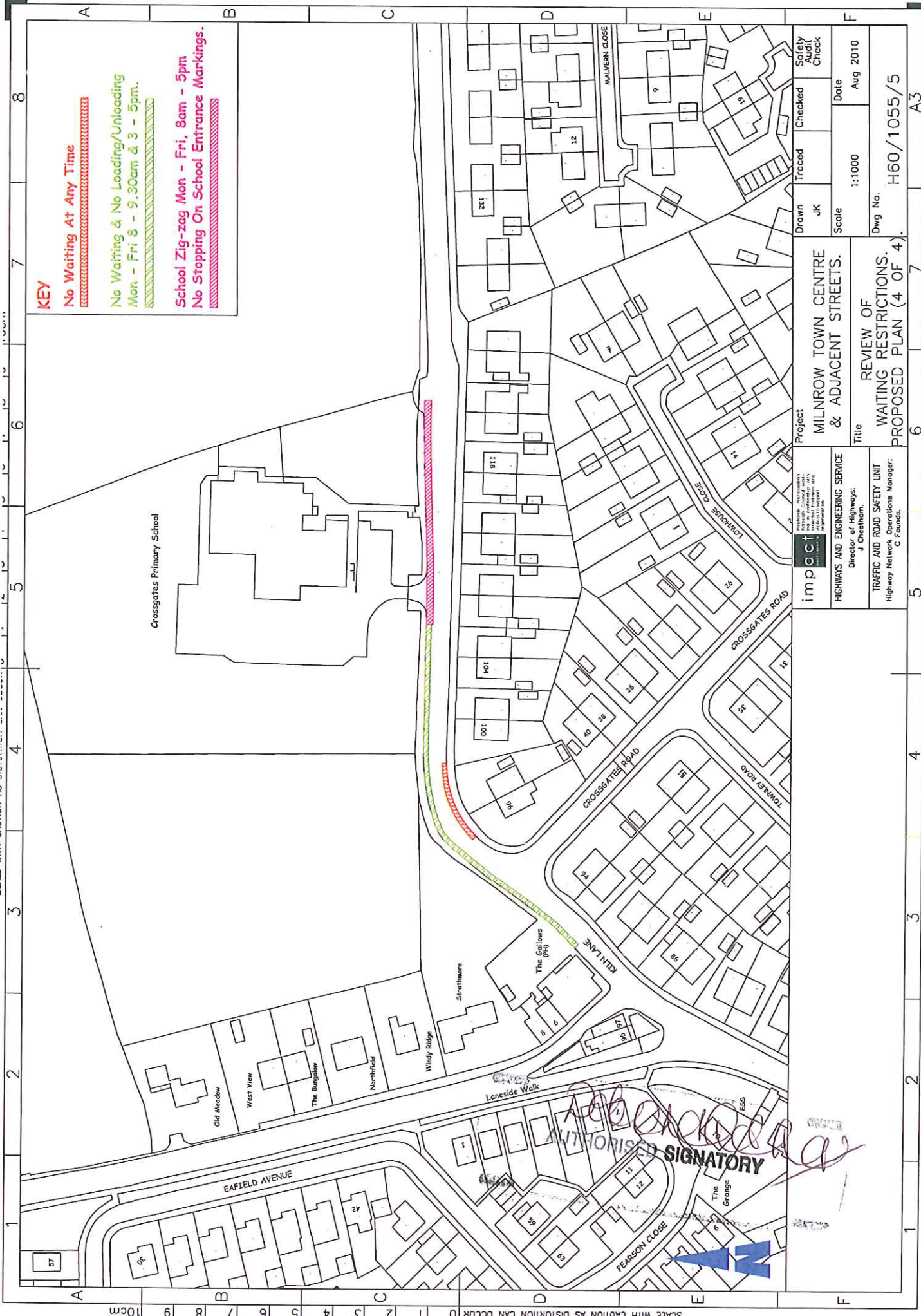
Scale
1:1000

Drawn
J. Chatterton

Check
J. Chatterton

Date
July 2010

Drawn No.
H60/1055/3



KEY

No Waiting At Any Time

No Waiting & No Loading/Unloading
Mon - Fri 8 - 9.30am & 3 - 5pm.

School Zig-zag Mon - Fri, 8am - 5pm
No Stopping On School Entrance Markings.

impact
Infrastructure, Sustainability
and Engineering Services
Limited

HIGHWAYS AND ENGINEERING SERVICE
Director of Highways:
J Cheetham.

TRAFFIC AND ROAD SAFETY UNIT
Highway Network Operations Manager:
C Foulds.

Project
MILNROW TOWN CENTRE
& ADJACENT STREETS.

Title
REVIEW OF
WAITING RESTRICTIONS.
PROPOSED PLAN (4 OF 4).

Drawn JK
Traced
Checked
Safety Audit Check

Scale 1:1000

Date Aug 2010

Dwg No.

H60/1055/5

SCALE WITH CAUTION AS DISTORTION CAN OCCUR

AUTHORIZED SIGNATORY