

BOROUGH OF ROCHDALE
((CIVIL ENFORCEMENT OF TRAFFIC CONTRAVENTIONS) (VARIOUS
STREETS)
(ROCHDALE TOWNSHIP) ORDER 2008)
(AMENDMENT) (NO. 9) ORDER 2009

HARTLEY LANE, QUEENS DRIVE AND QUEENSWAY, ROCHDALE

The Rochdale Borough Council, in exercise of its powers under Sections 1(1), 2 and 4 of the Road Traffic Regulation Act 1984 ("the Act") and of all other enabling powers, and after consultation with the Chief Officer of Police in accordance with Section 124(1) and paragraph 20(1) of Part III of Schedule 9 to the Act, hereby make the following Order:-

1. This Order may be cited as the Borough of Rochdale ((Civil Enforcement of Traffic Contraventions) (Various Streets) (Rochdale Township) Order 2008) (Amendment) (No. 9) Order 2009 and shall come into operation on 1st August 2009.
2. The Borough of Rochdale (Civil Enforcement of Traffic Contraventions) (Various Streets) (Rochdale Township) Order 2008 is hereby amended by inserting the wording shown in the Schedule to this Order.
3. The Interpretation Act 1978 shall apply for the interpretation of this Order as it applies for the interpretation of an Act of Parliament.

SCHEDULE

Schedule No. 8.1

School Zigzag Mon-Fri 8am – 5pm No stopping on School Entrance Markings

Hartley Lane, Balderstone and Kirkholt

- (ni) easterly side from a point 71 metres south of its junction with Queensway to a point 102.56 metres south of its junction with Queensway
- (nii) easterly side from a point 125.06 metres south of its junction with Queensway to a point 150.62 metres south east of its junction with Queensway
- (niii) northerly side from a point 264 metres south east of its junction with Queensway to a point 269.56 metres south east of its junction with Queensway

Schedule 5.13

No Loading Mon-Fri 8.00 – 9.30am & 3.00-5.00pm

Hartley Lane, Balderstone and Kirkholt Ward

- (ni) easterly side from its junction with Queensway for a distance of 71 metres in a southerly direction
- (nii) easterly side from a point 102.56 metres south of its junction with Queensway to a point 125.06 metres south of its junction with Queensway
- (niii) easterly side from a point 150.62 metres south east of its junction with Queensway to a point 177.62 metres south of its junction with Queensway
- (niv) westerly side from its junction with Queens Drive for a distance of 88 metres in a southerly direction

Schedule 1.1
No Waiting At Any Time

Hartley Lane, Balderstone and Kirkholt Ward

- (ni) easterly side from its junction with Queensway for a distance of 71 metres in a southerly direction
- (nii) easterly side from a point 102.56 metres south of its junction with Queensway to a point 125.06 metres south of its junction with Queensway
- (niii) easterly side from a point 150.62 metres south east of its junction with Queensway to a point 177.62 metres south of its junction with Queensway
- (niv) westerly side from its junction with Queens Drive for a distance of 88 metres in a southerly direction

Queens Drive, Balderstone and Kirkholt Ward

- (ni) southerly side from its junction with Hartley Lane for a distance of 40 metres in a westerly direction
- (nii) northerly side from its junction with Hartley Lane for a distance of 12 metres in a south westerly direction

Queensway, Balderstone and Kirkholt Ward

- (ni) south westerly side from its junction with Hartley Lane for a distance of 10 metres in a south westerly direction
- (nii) south westerly side from its junction with Hartley Lane for a distance of 10 metres in a north easterly direction

Schedule 2.3
No Waiting Mon-Fri 8am-5pm

Hartley Lane, Balderstone and Kirkholt Ward

- (ni) easterly side from a point 177.62 metres south of its junction with Queensway to a point 264 metres south of its junction with Queensway
- (nii) south westerly side from a point 37 metres south east of its junction with Queens Drive to a point 88 metres south east of its junction with Queens Drive

Dated this 14th day of July 2009

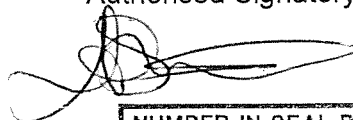
THE COMMON SEAL of THE ROCHDALE)

BOROUGH COUNCIL was hereunto affixed)

in the presence of:)

tro73a

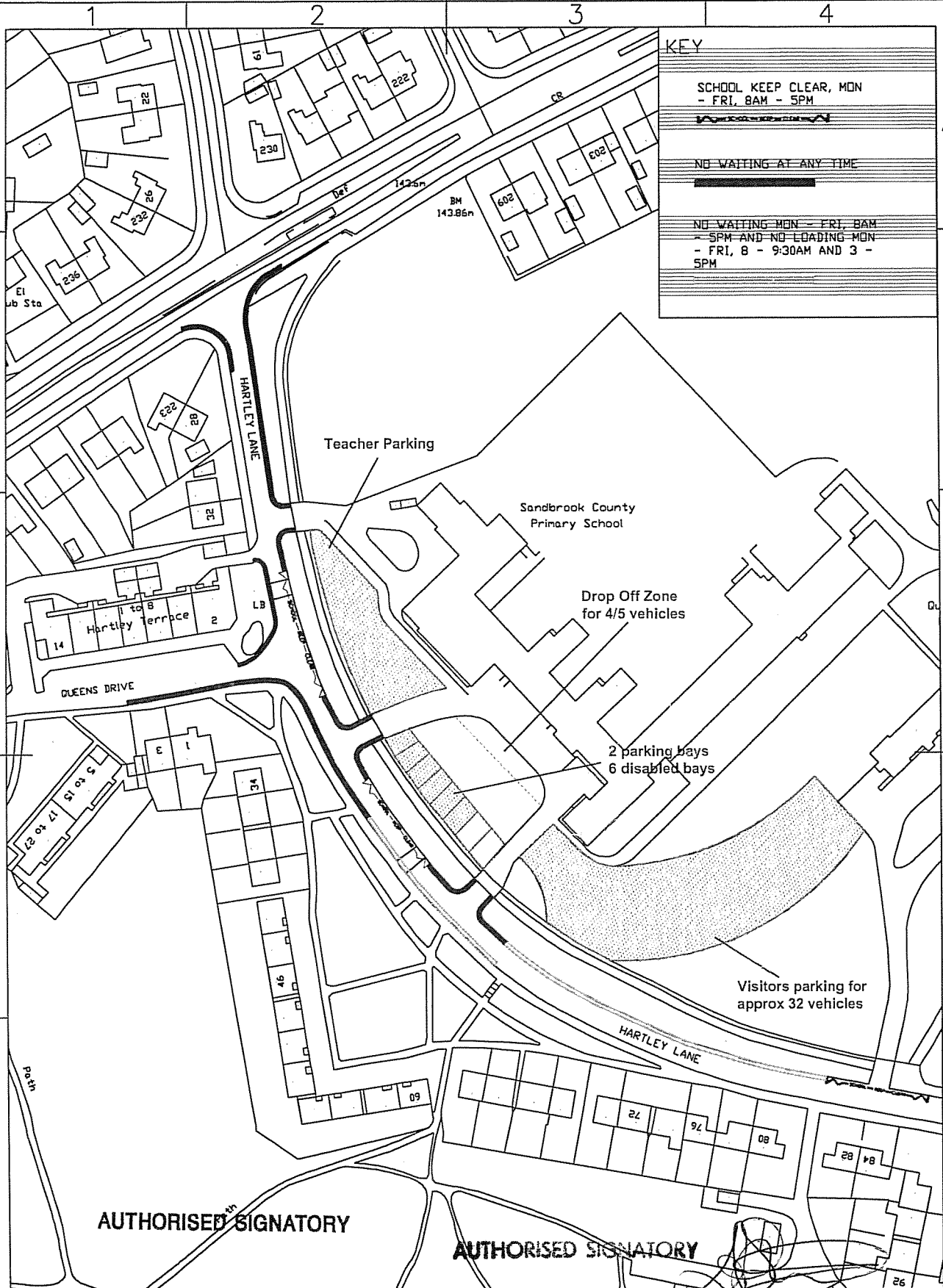
Authorised Signatory *JS*



NUMBER IN SEAL BOOK
35186



SCALE WITH CAUTION AS DISTORTION CAN OCCUR 0 1 2 3 4 5 6 7 8 9 10cm



KEY

	SCHOOL KEEP CLEAR, MON - FRI, 8AM - 5PM
	NO WAITING AT ANY TIME
	NO WAITING MON - FRI, 8AM - 5PM AND NO LOADING MON - FRI, 8 - 9:30AM AND 3 - 5PM

AUTHORISED SIGNATORY

AUTHORISED SIGNATORY

<p>Rochdale Metropolitan Borough Council working in partnership with Mouchel Parkman and Agilys to support regeneration</p> <p>HIGHWAYS AND ENGINEERING SERVICE Head of Service: D. Forrester B.Sc., M.B.A., C.Eng., M.I.C.E.</p> <p>TRAFFIC AND ROAD SAFETY UNIT Manager: A Show I Eng. A.M.I.C.E., F.I.H.I.E.</p>	<p>Project Hartley Lane, Rochdale</p>	<p>Drawn CT</p> <p>Traced *</p> <p>Checked *</p> <p>Safety Audit Check *</p>
	<p>Title School Keep Clear, Waiting and Loading Restrictions</p>	<p>Scale NTS</p> <p>Date 03/11/2008</p>
	<p>Dwg No. A4/809157/058/001</p>	

A4

