

RHONDDA CYNON TAFF COUNTY BOROUGH COUNCIL

(VARIOUS ROADS, MOUNTAIN ASH)

CA 233

(VARIATION, WAITING AND LOADING RESTRICTIONS, RESIDENTS PARKING) ORDER 2018

NOTICE IS HEREBY GIVEN that the Rhondda Cynon Taff County Borough Council have made various Orders under Sections 1, 2, 4, 5, 32, 35, 45, 46, 47, 49 and 53 of the Road Traffic Regulation Act 1984 ("the Act"), and of all other enabling powers, the effect of which will be to:

1. Revoke the Traffic Regulation Order specified in Schedule 1
2. Vary the Traffic Regulation Order specified in Schedule 2
3. Introduce Prohibition of Waiting At Any Time on the lengths of roads specified in Schedule 3
4. Introduce Prohibition of Loading At Any Time on the lengths of roads specified in Schedule 4
5. Introduce Loading Only Monday to Saturday 8am-6pm on the lengths of roads specified in Schedule 5
6. Introduce Residents Parking Only Monday to Saturday 8am-6pm on the lengths of roads specified in Schedule 6
7. Introduce shared Residents Parking and Limited Waiting in excess of 2 hours with No return within 4 hours Monday to Saturday 8am-6pm on the lengths of roads specified in Schedule 7

The Order will come into operation on 17th September 2018

Any person wishing to question the validity of the Order or of any provision contained in it on the grounds that they are not within the powers conferred by the Road Traffic Regulation Act, 1984 or on the grounds that any requirement of that Act or of any instrument made under it had not been complied with in relation to the Order, may within six weeks from 17th September 2018 apply to the High Court for this purpose

SCHEDULE 1 – Revocation

The Urban District of Mountain Ash Order sealed on 6th September 1949 shall be revoked in its entirety

CL02

SCHEDULE 2 – Variation

1. The "Rhondda Cynon Taff County Borough Council (Prohibition and Restriction of Waiting and Loading and On Street Parking Places) Consolidation Order 2012" shall be varied by the revocation of the following Orders in their entirety from the Schedule of Orders:-
 - a. Urban District of Mountain Ash (Various Streets) (Prohibition and Restriction of Waiting) Order 1973 CA21
 - b. Urban District of Mountain Ash (Fountain Street Mountain Ash) (Prohibition and Restriction of Waiting) Order 1974 CA22
 - c. Mid Glamorgan County Council (Dyffryn Street Part and Union Street Part Mountain Ash) (Prohibition of Waiting) Order 1983 CA78
 - d. Rhondda Cynon Taff County Borough Council (Pryce Street Dyffryn Street and Chancery Lane Mountain Ash) (Prohibition of Waiting At Any Time) Variation Order 2005 CA167
2. The "Rhondda Cynon Taff County Borough Council (Prohibition and Restriction of Waiting and Loading and On Street Parking Places) Consolidation Order 2012" shall be varied by the removal of the relevant items from the following Orders:-
 - a. Urban District Council of Mountain Ash (Various Streets) (Prohibition and Restriction of Waiting) Order 1968 shall be varied by the removal of items 5 and 8 from schedule 1 of the Order CA09
 - b. Mid Glamorgan County Council (Duffryn Street Pryce Street and Knight Street Mountain Ash) (Street Parking Places Variation and Prohibition of Waiting) Order 1979 shall be varied by the removal of items b(ii) and b(iii) and c(i) and c(ii) from the schedule of the Order CA54
 - c. Rhondda Cynon Taff County Borough Council (Quarry Road Woodland Street and Adjacent Roads Mountain Ash) (Variation Prohibition of Waiting At Any Time Prohibition of Left Hand Turning Movements and 20 MPH Speed Limit) Order 2010 shall be varied by the removal of the relevant items a and b of Part 1 and reference to Dyffryn Street Part 2 from the Order. CA199

SCHEDULE 3 – Prohibition of Waiting At Any Time

- a. The north west side of Chancery Lane from its junction with Dyffryn Street north eastwards for a distance of 5 metres
- b. The north west side of Darran Road from its junction with Oxford Street south westwards for a distance of 14 metres
- c. The north west side of Darran Road from a point 9 metres north east of its junction with Ifor Street south westwards to a point 7 metres south west of its junction with Dover Street a distance of 150 metres
- d. The south eastern side of Darran Road from its junction with Oxford Street south westwards to its junction with High Street a distance of 264 metres
- e. The north east side of Dyffryn Street from its junction with Union Street north westwards for a distance of 5 metres

- f. The north east side of Dyffryn Street from its junction with Union Street south eastwards for a distance of 9 metres
- g. The north east side of Dyffryn Street from its junction with Pryce Street north westwards for a distance of 6 metres
- h. The north east side of Dyffryn Street from its junction with Pryce Street south eastwards for a distance of 10 metres
- i. The north east side of Dyffryn Street from its junction with Chancery Lane north westwards for a distance of 3 metres
- j. The north east side of Dyffryn Street from its junction with Chancery Lane south eastwards for a distance of 7 metres
- k. The north east side of Dyffryn Street from its junction with Knight Street north westwards for a distance of 7 metres
- l. The south west side of Dyffryn Street from its junction with Graig Street south eastwards for a distance of 3 metres
- m. The north west side of Fountain Street from its junction with High Street to its junction with Dyffryn Street a distance of 45 metres
- n. The south east side of Fountain Street from its junction with High Street north eastwards for a distance of 5 metres
- o. The south east side of Fountain Street from its junction with Dyffryn Street south westwards for a distance of 5 metres
- p. The north west side of Knight Street from its junction with Oxford Street south westwards for a distance of 19 metres
- q. The north west side of Pryce Street from its junction with High Street north eastwards for a distance of 8 metres
- r. The north west side of Pryce Street from its junction with Dyffryn Street south westwards for a distance of 5 metres
- s. The south east side of Pryce Street from its junction with Dyffryn Street north eastwards for a distance of 8 metres
- t. The south west side of Napier Street from the common boundary of No. 42 and 43 north westwards to the south eastern boundary of No. 38 a distance of 31 metres
- u. The north west side of Union Street from its junction with Dyffryn Street north eastwards for a distance of 10 metres
- v. The south east side of Union Street from its junction with Dyffryn Street north eastwards for a distance of 6 metres
- w. The south west side of Ifor Street from its junction with Darran Road north westwards for a distance of 5 metres
- x. The south east side of Fountain Street from a point 12 metres south west of its junction with Dyffryn Street south westwards for a distance of 6 metres

SCHEDULE 4 – Prohibition of Loading At Any Time

- a. The north west side of Darran Road from its junction with Oxford Street south westwards for a distance of 14 metres
- b. The north west side of Darran Road from its junction with Ifor Street north eastwards for a distance of 9 metres
- c. The south east side of Darran Road from its junction with Miskin Road south westwards to its junction with Ifor Street a distance of 42 metres

SCHEDULE 5 – Loading Only Monday to Saturday 8am-6pm

- a. The south east side of Fountain Street from a point 5 metres south west of its junction with Dyffryn Street south westwards for a distance of 7 metres

SCHEDULE 6 – Residents Parking Only Monday to Saturday 8am-6pm

- a. The north west side of Chancery Lane from a point 5 metres north east of its junction with Dyffryn Street north eastwards for a distance of 27 metres
- b. The north east side of Dyffryn Street from a point 7 metres north west of its junction with Knight Street north westwards for a distance of 20 metres
- c. The north east side of Dyffryn Street from a point 7 metres south east of its junction with Chancery lane south eastwards for a distance of 14 metres
- d. The north east side of Dyffryn Street from a point 5 metres north west of its junction with Chancery lane north westwards for a distance of 10 metres
- e. The north east side of Dyffryn Street from a point 28 metres north west of its junction with Chancery lane north westwards for a distance of 7 metres
- f. The north east side of Dyffryn Street from a point 6 metres north west of its junction with Pryce Street north westwards for a distance of 13 metres
- g. The north east side of Dyffryn Street from a point 22 metres north west of Pryce Street north westwards for a distance of 5 metres
- h. The north east side of Dyffryn Street from a point 5 metres north west of Union Street north westwards to the northern building line of No.9 a distance of 30 metres
- i. The south west side of Dyffryn Street from its common boundary of No.s 26 and 27 north westwards to a point 3 metres south east of Graig Street a distance of 49 metres
- j. The south east side of Fountain Street from a point 5 metres north east of its junction with High Street north eastwards for a distance of 22 metres

- k. The south west side of Ifor Street from a point 3 metres north west the north western building line of No 1 south eastwards for a distance of 55 metres
- l. The north east side of Napier Street from a point 6 metres north west of its junction with Darran Road north westwards to a point opposite its common boundary of No.s 42 and 43 a distance of 66 metres
- m. The south west side of Napier Street from the south eastern boundary of No. 38 north westwards to a point 5 metres south east of its junction with Knight Street a distance of 112 metres
- n. The south east side of Pryce Street from a point 8 metres north east of its junction with Dyffryn Street north eastwards for a distance of 28 metres
- o. The south east side of Union Street from a point 6 metres north east of its junction with Dyffryn Street north eastwards for a distance of 26 metres

SCHEDULE 7 – Shared Residents Parking and Limited Waiting 2 hours with no return within 4 hours Monday to Saturday 8am-6pm

- a. The north west side of Darran Road from a point 9 metres north east of its junction with Ifor Street north eastwards for a distance of 18 metres
- b. The north west side of Knight Street from a point 5 metres north east of its junction with Dyffryn Street north eastwards for a distance of 11 metres
- c. The north west side of Knight Street from a point 32 metres north east of its junction with Dyffryn Street north eastwards for a distance of 19 metres
- d. The north west side of Pryce Street from a point 5 metres south west of its junction with Dyffryn Street south westwards for a distance of 27 metres
- e. The north west side of Pryce Street from a point 8 metres north east of its junction with High Street north eastwards for a distance of 6 metres

SCHEDULE 8 - Eligibility address for permits

Road	Numbers
Chancery Lane	12-22
Darran Road	1-9 Including 7A and Glen cottage
Dyffryn Street	1-56 Including 1 and 2 Glancynon Flats
Foundry Terrace	1-5
Fountain Street	1-6
Ifor Street	1-10
Knight Street	1-4 Including 2A
Napier Street	1-57
Pryce Street	1-26 Including The Rise
St David's Place	1-3
Union Street	1-14

Dated 14th September 2018



Christopher B. Jones
 Director of Legal and Democratic Services
 The Pavilions, Cambrian Park, Clydach Vale, CF40 2XX

CYNGOR BWRDEISTREF SIROL RHONDDA CYNON TAF

(STRYDOEDD AMRYWIOL, ABERPENNAR)

GORCHYMYN (AMRYWIO, CYFYNGIADAU AROS A LLWYTHO) 2018

DYMA HYSBYSIAD bod Cyngor Bwrdeistref Sirol Rhondda Cynon Taf wedi gwneud amryw Orchymnion o dan Adrannau 1, 2, 4, 5, 32, 35, 45, 46, 47, 49 a 53 o Ddeddf Rheoleiddio Traffig 1984 ("y Ddeddf") a phob un o'r holl bwerau galluogi eraill, a'i effaith fydd:

1. Diddymu Gorchymyn Rheoleiddio Traffig sydd wedi'i nodi yn Atodlen 1.
2. Amrywio'r Gorchymyn Rheoleiddio Traffig sydd wedi'i nodi yn Atodlen 2.
3. Gwahardd Aros Ar Unrhyw Adeg ar y rhannau o'r ffyrdd sydd wedi'u pennu yn Atodlen 3.
4. Gwahardd cerbydau rhag Llwytho ar unrhyw adeg ar y rhannau o'r ffyrdd sydd wedi'u pennu yn Atodlen 4.
5. Llwytho yn Unig o ddydd Llun i ddydd Sadwrn rhwng 8am a 6pm ar y rhannau o'r ffyrdd sydd wedi'u pennu yn Atodlen 5.
6. Cyflwyno trefniadau Parcio i Breswylwyr yn Unig rhwng 8am a 6pm o ddydd Llun i ddydd Sadwrn ar hyd y ffyrdd sydd wedi'u pennu yn Atodlen 6 .
7. Cyflwyno trefniadau Parcio i Breswylwyr yn Unig a Chyfyngiad Aros am gyfnod dros 2 awr a dim dychwelyd o fewn 4 awr rhwng 8am a 6pm o ddydd Llun i ddydd Sadwrn ar y rhannau o'r ffyrdd sy'n cael eu nodi yn Atodlen 7.

Mae'r eiddo a fydd yn gymwys ar gyfer cynllun Parcio i Breswylwyr wedi'u nodi yn Atodlen 8.

Bydd y Gorchymyn yn dod i rym ar 17 Medi 2018

Chaiff unrhyw berson sy'n dymuno cwestiynu dilysrwydd y Gorchymyn, neu unrhyw ddarpariaeth a gynhwysir ynddo, ar y sail nad yw o fewn y bwerau a roddwyd gan Ddeddf Rheoleiddio Traffig Ffyrdd 1984, neu ar y sail na chydymffurfiwyd ag unrhyw un o ofnyon y Ddeddf honno neu unrhyw offeryn a wnaed o dani mewn perthynas â'r Gorchymyn, wneud cais o fewn chwe wythnos i 17 Medi 2018 i'r Uchel Lys at y diben hwn

ATODLEN 1 - Diddymu

Diddymu Gorchymyn Cyngor Dosbarth Trefol Aberpennar, a gafodd ei awdurdodi ar 6 Medi 1949, yn ei gyfanrwydd

ATODLEN 2 - Amrywiad

1. Bydd "Gorchymyn Cydgrynhoi (Gwahardd a Chyfyngu ar Aros a Llwytho a Mannau Parcio ar ochr y Ffordd) Cyngor Bwrdeistref Sirol Rhondda Cynon Taf 2012" yn cael ei amrywio drwy ddileu'r Gorchymnion canlynol yn eu cyfanrwydd o'r Atodlen Gorchymnion:-
 - a. Gorchymyn (Strydoedd Amrywiol) (Gwahardd a Chyfyngu ar Aros) Cyngor Dosbarth Trefol Aberpennar 1973.
 - b. Gorchymyn (Fountain Street, Aberpennar) (Gwahardd a Chyfyngu ar Aros) Cyngor Dosbarth Trefol Aberpennar 1974.
 - c. Gorchymyn (Dyffryn Street a Stryd yr Undeb, Aberpennar) (Gwahardd Aros) Cyngor Sir Morgannwg Ganol 1983.
 - d. Gorchymyn Amrywio (Pryce Street, Dyffryn Street a Chancery Lane, Aberpennar) (Gwahardd Aros ar Unrhyw Adeg) Cyngor Bwrdeistref Sirol Rhondda Cynon Taf 2005.
2. Bydd "Gorchymyn Cydgrynhoi 2012 (Gwahardd a Chyfyngu ar Aros a Llwytho a Mannau Parcio ar ochr y Ffordd) Cyngor Bwrdeistref Sirol Rhondda Cynon Taf 2012" yn cael ei amrywio drwy ddileu'r eitemau perthnasol o'r Gorchymnion canlynol:
 - a. Bydd "Gorchymyn (Strydoedd Amrywiol) (Gwahardd a Chyfyngu ar Aros) Cyngor Dosbarth Trefol Aberpennar 1968" yn cael ei amrywio trwy ddileu eitemau 5 ac 8 o Atodlen 1 y Gorchymyn yn eu cyfanrwydd.
 - b. Bydd "Gorchymyn (Duffryn Street, Pryce Street a Knight Street, Aberpennar) (Amrywio Mannau Parcio ar y Stryd a Gwahardd Aros) Cyngor Sir Morgannwg Ganol 1979" yn cael ei amrywio trwy ddileu eitemau b(ii), b(iii), c(i) a c(ii) o'r Gorchymyn yn eu cyfanrwydd.
 - c. Bydd "Gorchymyn 2010 Cyngor Bwrdeistref Sirol Rhondda Cynon Taf (Quarry Road, Woodland Street a'r Ffyrdd Cyfagos, Aberpennar) (Amrywio Gwahardd Aros ar Unrhyw Adeg, Gwahardd Troi i'r Chwith a Therfyn Cyflymder 20 MYA)" yn cael ei amrywio trwy ddileu eitemau perthnasol a a b o Ran 1 a'r cyfeiriad at Dyffryn Street yn Rhan 2 o'r Gorchymyn.

ATODLEN 3 – Gwahardd aros ar unrhyw adeg

- a. Ochr ogledd-orllewinol Chancery Lane o'r gyffordd â Dyffryn Street am bellter o 5 metr tua'r gogledd-ddwyrain.
- b. Ochr ogledd-orllewinol Darran Road o'r gyffordd â Oxford Street am bellter o 14 metr tua'r de-orllewin.
- c. Ochr ogledd-orllewinol Darran Road, o bwynt sydd 9 metr tua'r gogledd-ddwyrain o'r gyffordd ag Ifor Street am bellter o 7 metr tua'r de-orllewin a hyd at bwynt sydd 7 metr tua'r de-orllewin o'r gyffordd â Dover Street, am bellter o 150 metr.

- d. Ochr de-ddwyreiniol Darran Road o'r gyffordd â Oxford Street am bellter o 264 metr tua'r gyffordd â'r Stryd Fawr.
- e. Ochr ogledd-ddwyreiniol Dyffryn Street, o'r gyffordd â Stryd yr Undeb am bellter o 5 metr tua'r gogledd-orllewin.
- f. Ochr ogledd-ddwyreiniol Dyffryn Street o'r gyffordd â Stryd yr Undeb am bellter o 9 metr tua'r de-ddwyrain.
- g. Ochr ogledd-ddwyreiniol Dyffryn Street o'r gyffordd â Pryce Street am bellter o 6 metr tua'r gogledd-orllewin.
- h. Ochr ogledd-ddwyreiniol Dyffryn Street o'r gyffordd â Pryce Street am bellter o 10 metr tua'r de-ddwyrain.
- i. Ochr ogledd-ddwyreiniol Dyffryn Street o'r gyffordd â Chancery Lane am bellter o 3 metr tua'r gogledd-orllewin.
- j. Ochr ogledd-ddwyreiniol Dyffryn Street o'r gyffordd â Chancery Lane am bellter o 7 metr tua'r de-ddwyrain.
- k. Ochr ogledd-ddwyreiniol Dyffryn Street o'r gyffordd â Knight Street am bellter o 7 metr tua'r gogledd-orllewin.
- l. Ochr de-orllewinol Dyffryn Street o'r gyffordd â Graig Street am bellter o 3 metr tua'r de-ddwyrain.
- m. Ochr ogledd-orllewinol Fountain Street o'r gyffordd â'r Stryd Fawr am bellter o 45 metr hyd at y gyffordd â Dyffryn Street.
- n. Ochr de-ddwyreiniol Fountain Street o'r gyffordd â'r Stryd Fawr am bellter o 5 metr tua'r gogledd-ddwyrain.
- o. Ochr de-ddwyreiniol Fountain Street o'r gyffordd â Dyffryn Street am bellter o 5 metr tua'r de-orllewin.
- p. Ochr ogledd-orllewinol Knight Street o'r gyffordd â Oxford Street am bellter o 19 metr tua'r de-orllewin.
- q. Ochr ogledd-orllewinol Pryce Street o'r gyffordd â'r Stryd Fawr am bellter o 8 metr tua'r gogledd-ddwyrain.
- r. Ochr ogledd-orllewinol Pryce Street o'r gyffordd â Dyffryn Street am bellter o 5 metr tua'r de-orllewin.
- s. Ochr de-ddwyreiniol Pryce Street o'r gyffordd â Dyffryn Street am bellter o 8 metr tua'r gogledd-ddwyrain.
- t. Ochr de-orllewinol Napier Street o ffin gyffredin rhif 42 a rhif 43 am bellter o 31 metr tua'r gogledd-orllewin hyd at ffin rhif 38.
- u. Ochr ogledd-orllewinol Stryd yr Undeb o'r gyffordd â Dyffryn Street am bellter o 10 metr tua'r gogledd-ddwyrain.
- v. Ochr de-ddwyreiniol Stryd yr Undeb o'r gyffordd â Dyffryn Street am bellter o 6 metr tua'r gogledd-ddwyrain.
- w. Ochr de-orllewinol Ifor Street o'r gyffordd â Darran Road am bellter o 5 metr tua'r gogledd-orllewin.
- x. Ochr de-ddwyreiniol Fountain Street, o bwynt sydd 12 metr tua'r de-orllewin o'r gyffordd â Dyffryn Street, am bellter o 6 metr tua'r de-orllewin.

ATODLEN 4— Gwahardd Llwytho ar Unrhyw Adeg

- a. Ochr ogledd-orllewinol Darran Road o'r gyffordd â Oxford Street am bellter o 14 metr tua'r de-orllewin.
- b. Ochr ogledd-orllewinol Darran Road o'r gyffordd ag Ifor Street am bellter o 9 metr tua'r gogledd-ddwyrain.
- c. Ochr de-ddwyreiniol Darran Road o'r gyffordd â Miskin Road am bellter o 42 metr tua'r de-orllewin hyd at ei gyffordd â Ifor Street.

ATODLEN 5 - Llwytho yn Unig rhwng 8am a 6pm o ddydd Llun i ddydd Sadwrn

- a. Ochr de-ddwyreiniol Fountain Street, o bwynt sydd 5 metr tua'r de-orllewin o'r gyffordd â Dyffryn Street, am bellter o 7 metr tua'r de-orllewin.

ATODLEN 6 - Parcio i Breswylwyr yn Unig rhwng 8am a 6pm o ddydd Llun i ddydd Sadwrn

- a. Ochr ogledd-orllewinol Chancery Lane o bwynt sydd 5 metr tua'r gogledd-ddwyrain o'r gyffordd â Dyffryn Street am bellter o 27 metr tua'r gogledd-ddwyrain.
- b. Ochr ogledd-ddwyreiniol Dyffryn Street o bwynt sydd 7 metr tua'r gogledd-orllewin o'r gyffordd â Knight Street am bellter o 20 metr tua'r gogledd-orllewin.
- c. Ochr ogledd-ddwyreiniol Dyffryn Street o bwynt sydd 7 metr tua'r de-ddwyrain o'r gyffordd â Chancery Lane am bellter o 14 metr tua'r de-ddwyrain.
- d. Ochr ogledd-ddwyreiniol Dyffryn Street o bwynt sydd 5 metr tua'r gogledd-orllewin o'r gyffordd â Chancery Lane am bellter o 10 metr tua'r gogledd-orllewin.
- e. Ochr ogledd-ddwyreiniol Dyffryn Street o bwynt sydd 28 metr tua'r gogledd-orllewin o'r gyffordd â Chancery Lane am bellter o 7 metr tua'r gogledd-orllewin.
- f. Ochr gogledd-ddwyreiniol Dyffryn Street o bwynt sydd 6 metr tua'r gogledd-orllewin o'r gyffordd â Pryce Street am bellter o 13 metr tua'r gogledd-orllewin.
- g. Ochr ogledd-ddwyreiniol Dyffryn Street o bwynt sydd 22 metr tua'r gogledd-orllewin o Pryce Street am bellter o 5 metr tua'r gogledd-orllewin.
- h. Ochr ogledd-ddwyreiniol Dyffryn Street o bwynt sydd 5 metr tua'r gogledd-orllewin o Stryd yr Undeb am bellter o 30 metr tua'r gogledd-orllewin hyd at linell adeilad ar ochr ogleddol Rhif 9.
- i. Ochr de-orllewinol Dyffryn Street, o'r ffin gyffredin â Rhif 26 a 27 tua'r gogledd-orllewin hyd at bwynt sydd 3 metr i'r de-ddwyrain o Graig Street, am bellter o 49 metr.
- j. Ochr de-ddwyreiniol Fountain Street, o bwynt sydd 5 metr tua'r gogledd-ddwyrain o'r gyffordd â'r Stryd Fawr, am bellter o 22 metr tua'r gogledd-ddwyrain.
- k. Ochr de-orllewinol Ifor Street, o bwynt sydd 3 metr tua'r gogledd-orllewin o linell adeilad Rhif 1 yn y gogledd-orllewin am bellter o 55 metr tua'r de-ddwyrain.
- l. Ochr gogledd-ddwyreiniol Napier Street, o bwynt sydd 6 metr i ogledd-orllewin o'r gyffordd â Darran Road, am bellter o 66 metr tua'r gogledd-orllewin hyd at bwynt cyferbyn â ffin gyffredin Rhifau 42 a 43.
- m. Ochr de-orllewinol Napier Street, o ochr de-ddwyreiniol ffin rhif 38 tua'r gogledd-orllewin at bwynt sydd 5 metr i dde-ddwyrain y gyffordd â Knight Street, am bellter o 112 metr tua'r gogledd-ddwyrain.
- n. Ochr de-ddwyreiniol Pryce Street, o bwynt sydd 8 metr tua'r gogledd-ddwyrain o'r gyffordd â Dyffryn Street, am bellter o 28 metr tua'r gogledd-ddwyrain.

- o. Ochr de-ddwyreiniol Stryd yr Undeb, o bwynt sydd 6 metr tua'r gogledd-ddwyrain o'r gyffordd â Dyffryn Street, am bellter o 26 metr tua'r gogledd-ddwyrain.

ATODLEN 7 – Parcio i Breswylwyr a Chyfyngiadau Aros 2 awr a dim dychwelyd o fewn 4 awr rhwng 8am a 6pm o ddydd Llun i ddydd Sadwrn.

- a. Ochr ogledd-orllewinol Darran Road, o bwynt sydd 9 metr tua'r gogledd-ddwyrain o'r gyffordd ag Ifor Street, am bellter o 18 metr tua'r gogledd-ddwyrain.
- b. Ochr ogledd-orllewinol Knight Street, o bwynt sydd 5 metr tua'r gogledd-ddwyrain o'r gyffordd â Dyffryn Street, am bellter o 11 metr tua'r gogledd-ddwyrain.
- c. Ochr ogledd-orllewinol Knith Street, o bwynt sydd 32 metr tua'r gogledd-ddwyrain o'r gyffordd â Dyffryn Street, am bellter o 19 metr tua'r gogledd-ddwyrain.
- d. Ochr ogledd-orllewinol Pryce Street, o bwynt sydd 5 metr tua'r de-orllewin o'r gyffordd â Dyffryn Street, am bellter o 27 metr tua'r de-orllewin.
- e. Ochr ogledd-orllewinol Pryce Street, o bwynt sydd 8 metr tua'r gogledd-ddwyrain o'r gyffordd â'r Stryd Fawr, am bellter o 6 metr tua'r gogledd-ddwyrain.

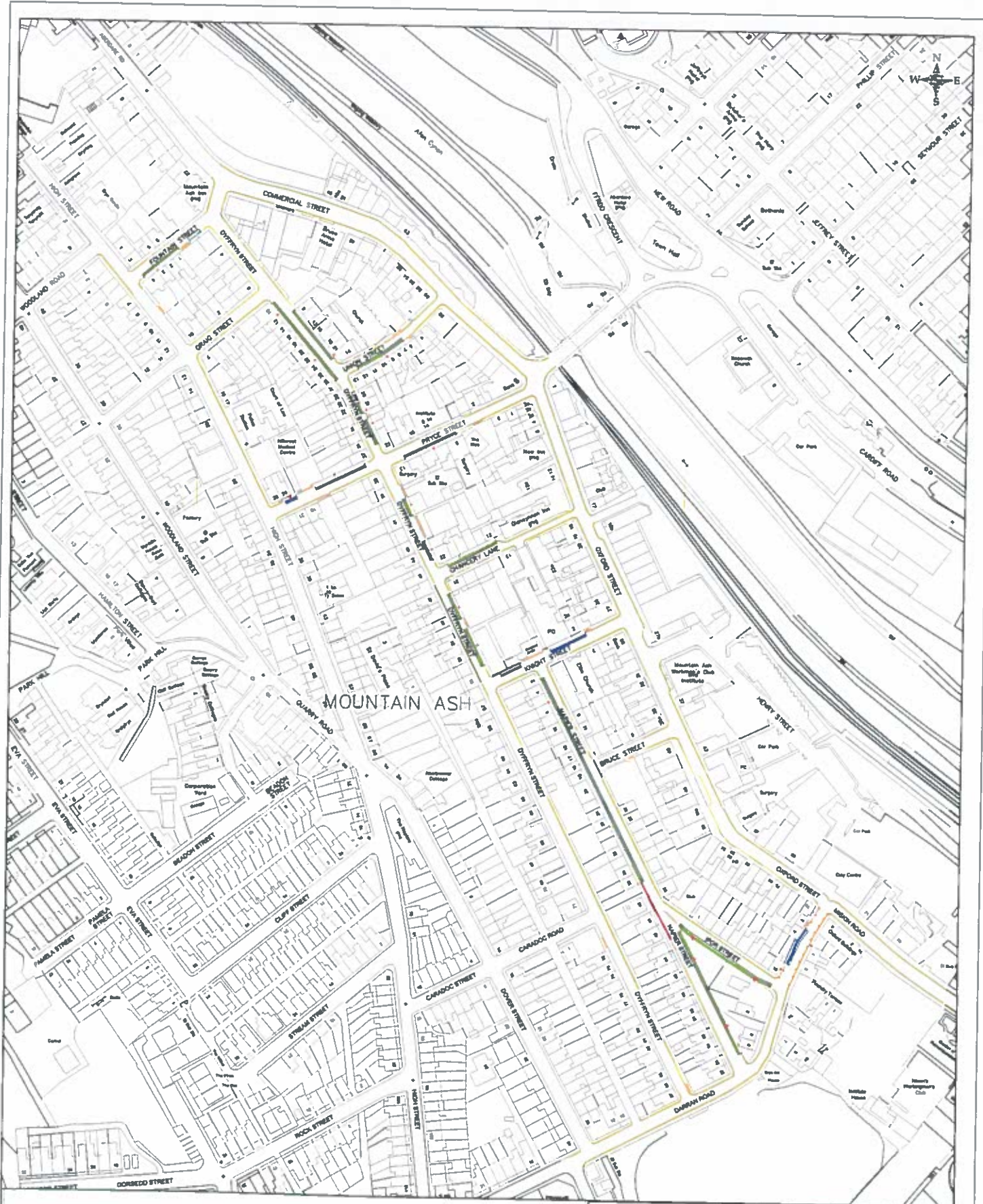
ATODLEN 8 - Cyfeiriadau sy'n gynnwys i dderbyn trwydded.

Ffordd	Rhif
Chancery Lane	12-22
Darran Road	1-9, gan gynnwys 7A a Glen Cottage
Dyffryn Street	1-56 gan gynnwys Fflatiau 1 a 2 Glancynon
Foundry Terrace	1-5
Fountain Street	1-6
Ifor Street	1-10
Knight Street	1-4, gan gynnwys 2A
Napier Street	1-57
Pryce Street	1-26, gan gynnwys The Rise
St David's Place	1-3
Stryd yr Undeb	1-14

Dyddiad: 14 Medi 2018



Christopher B. Jones
Cyfarwyddwr y Gwasanaethau Cyfreithiol a Llywodraethol
Y Pafiliynau, Parc Hen Lofa'r Cambrian, Cwm Clydach, CF40 2XX



MOUNTAIN ASH

- KEY**
- Lay bay markings to TSRGD 1028.3 and remove existing double yellow lines where appropriate
 - Lay double yellow lines to TSRGD 1018.1 with terminal markings
 - Lay double yellow kerb markings to TSRGD 1020.1
 - Existing restrictions to remain
 - Erect sign S1 on new 76mm post or existing lighting column
 - Erect sign S2 on new 76mm post or existing lighting column
 - Erect sign S3 on new 76mm post or existing lighting column
 - Erect sign S4 on new 76mm post or existing lighting column
 - Existing drop kerbs to remain

**VARIOUS ROADS MOUNTAIN ASH
PROPOSED RESIDENTS PARKING SCHEME-WO**

Group Director
Corporate & Frontline Services
Rhondda Cynon Taff
County Borough Council,
Serais House, Serais Road,
Pontypridd, CF37 1DU.



Cyfarwyddwr Cyflwynu y
Gwasanaethau Corfforddolaeth a Rhwyng Ffwrn,
Cynbor Bwrdeistref Bro
Rhondda Cynon Taff,
Ty Serais, Serais Road,
Pontypridd, CF37 1DU.

Size Maint	A3	Drawn Tynnu	JTG	Checked Ceirio	RM	Approved Cymarsoddydd	TDP	Date Dyddiad	04/12/17	
File No. Rhif y Ffai	IF045	Scales Graddfeydd		NTS		Org. No. Rhif y cynllun			T2018/19/1A	
Rev No.	Amendment Details						Date	Made	Check	App