

**REDCAR AND CLEVELAND BOROUGH COUNCIL
(REDCAR) (WAITING AND LOADING AND PARKING PLACES)
(CONSOLIDATION) (AMENDMENT) ORDER (NO. 1) 2007**

The Council of the Borough of Redcar and Cleveland (hereinafter referred to as "the Council") under Sections 1, 2, 4, 32, 35, 45, 46, 47, 53 and Part IV of Schedule 9 of the Road Traffic Regulation Act 1984 (hereinafter referred to as the "Act of 1984") and of all other enabling powers and after consultation with the Chief Officer of Police in accordance with part III of Schedule 9 of the Act of 1984 hereby makes the following Order:-

1. This Order shall come into operation on the 25th day of June 2007 and may be cited as the Redcar and Cleveland (Consolidation) (Amendment) (Order No. 1) 2007.
2. The Redcar and Cleveland Borough Council (Redcar) (Waiting and Loading and Parking Places) (Consolidation) Order 2003 ("the Order") is hereby amended as follows:-

- a) Delete from Schedule No. 1.00 – No Waiting at Any Time

Peirson Street

The south side from its junction with Clifford Street for a distance of 16 metres in an easterly direction.

- b) Insert to Schedule No. 1.00 – No Waiting at Any Time

Corporation Road

The north side from its junction with Sandringham Road for a distance of 10 metres in a westerly direction.

South side from a point 115 metres west of its junction with West Dyke Road, for a distance of 167 metres in a westerly direction.

Peirson Street

The south side from its junction with Elliot Street for a distance of 24 metres in an easterly direction.

Sandringham Road

The west side from its junction with Corporation Road for a distance of 16 metres in a northerly direction.

Warwick Road

North side, from its junction with Bamburgh Close, for a distance of 33 metres in an easterly direction.

- c. Insert Schedule No. 2.12 – No Waiting Monday to Friday 8:30 - 9:30 a.m. and 2:45 p.m. – 3:45 p.m.
- d. Insert the following to Schedule No. 2.12 – No Waiting Monday to Friday 8:30 a.m. – 9:30 a.m. and 2:45 p.m. – 3:45 p.m.

Keswick Road

The east side from a point 10 metres south of its junction with Ambleside Avenue to a point 13 metres north of its junction with Penrith Close

The west side from a point 10 metres north of its junction with Penrith Close to a point 10 metres south of its junction with Ambleside Avenue.

Mersey Road

East side from a point 60 metres south of its junction with Corporation Road, for a distance of 284 metres in a southerly direction.

West side from a point 60 metres south of its junction with Corporation Road to its junction with St Joseph's Court.

West side from its junction with St Joseph's Court to its junction with Thames Road.

St Joseph's Court

Both sides from its junction with Mersey Road for its full length.

Thames Road

North side from its junction with Mersey Road, for a distance of 10 metres in a westerly direction.

- e. Insert Schedule No. 2.30 – No Waiting Monday to Friday 8:00 a.m. – 9:30 a.m. and 2:30 p.m. – 4:00 p.m.
- f. Insert the following to Schedule No. 2.30 – No Waiting Monday to Friday 8:00 a.m. – 9:30 a.m. and 2:30 p.m. – 4:00 p.m.

Hayling Grove

Both sides from its junction with Hunsdale Crescent its full length.

- g. Delete the following from Schedule No. 2.9 – No Waiting Saturday and Sunday 9:00 a.m. – 3:00 p.m.

West Dyke Road

East side from a point 100 metres south of its junction with Thrush Road for a distance of 42 metres in a southerly direction.

Coniston Avenue

East side from its junction with Lakes Avenue for a distance of 38 metres in a southerly direction.

Rydal Avenue

East side from its junction with Lakes Avenue for a distance of 27 metres in a northerly direction.

Brooksbank Avenue

Both sides from its junction with West Dyke Road for a distance of 10 metres in a westerly direction.

Westfield Avenue

South side from its junction with West Dyke Road for a distance of 15.5 metres in a westerly direction.

- h. By inserting the following to Schedule No. 3.11 – No Loading and Unloading Monday to Friday 8:30 a.m. – 9:30 a.m. and 2:45 p.m. – 3:45 p.m.

Keswick Road

The east side from a point 10 metres south of its junction with Ambleside Avenue to a point 13 metres north of its junction with Penrith Close.

The west side from a point 10 metres north of its junction with Penrith Close to a point 10 metres south of its junction with Ambleside Avenue.

Mersey Road

East side from a point 60 metres south of its junction with Corporation Road for a distance of 284 metres in a southerly direction.

West side from a point 60 metres south of its junction with Corporation Road to its junction with St Joseph's Court.

West side from its junction with St Joseph's Court to its junction with Thames Road.

St Joseph's Court

Both sides from its junction with Mersey Road for its full length.

Thames Road

~~North side from its junction with Mersey Road for a distance of 10 metres in a westerly direction.~~

- i. By deleting from Schedule 3.80 – No Loading and Unloading Saturday and Sunday 9:00 a.m. – 3:00 p.m.

South side from its junction with West Dyke Road to its junction with Coniston Avenue.

Coniston Avenue

East side from its junction with Lakes Avenue for a distance of 38 metres in a southerly direction.

Rydal Avenue

East side from its junction with Lakes Avenue for a distance of 27 metres in a northerly direction.

Brooksbank Avenue

Both sides from its junction with West Dyke Road for a distance of 10 metres in a westerly direction.

Orchard Road

North side from its junction with West Dyke Road for a distance of 15 metres in a westerly direction.

Westfield Avenue

South side from its junction with West Dyke Road for a distance of 15.5 metres in a westerly direction.

- j. By deleting the following from Schedule No. 7.20 – Limited Waiting 8:00 a.m. – 6:00 p.m. 1 Hour, no return within 2 Hours.

Scott Street

East side from a point 8 metres north of its junction with Thrush Road for a distance of 9 metres in a northerly direction.

- k. By inserting the following into Schedule No. 7.20 – Limited Waiting 8:00 a.m. – 6:00 p.m. 1 Hour, no return within 2 Hours.

Scott Street

East side from a point 8 metres north of its junction with Thrush Road for a distance of 7 metres in a northerly direction.

- l. By deleting the following from Schedule 7.50 – Limited Waiting Monday to Saturday 8:00 a.m. – 6:00 p.m. 2 Hours no return within 2 Hours.

Station Road

West side from a point 10 metres south of its junction with Newcomen Terrace for a distance of 18 metres.

- m. By inserting Schedule No. 12.00 – Unlimited Waiting Bay.
- n. By inserting the following into Schedule No. 12.00 Unlimited Waiting Bay.

STREET

PEIRSON STREET

18

17

26

28

36

40

48

7.6m

24/3/08 SD

Existing No Waiting at any time restrictions (Double Yellow Lines)

Proposed No Waiting at any time restrictions (Double Yellow Lines)

Development Department
 Belmont House,
 Rectory Lane,
 Guisborough
 TS14 7ED
 Tel: (01642) 444000
 Fax: (01287) 612885



Joan Rees PhD MRTPI
 Director of Development

Scale Hor. 1/400
 Ver. 1/400
 Date 22/09/2006
 Dwg. No. *

Drawn by AM
 Traced by *
 Checked by *

Peirson Street, Redcar

School Time Traffic Regulation
 Order. Mon - Fri. 8.30am - 9.30am
 and 2.45pm - 3.45pm

Sacred Heart
 RC Secondary School

St Dominic's RC Primary School

MERSEY ROAD

ST JOSEPH'S COURT

THAMES ROAD

24/386SD

Handwritten signature

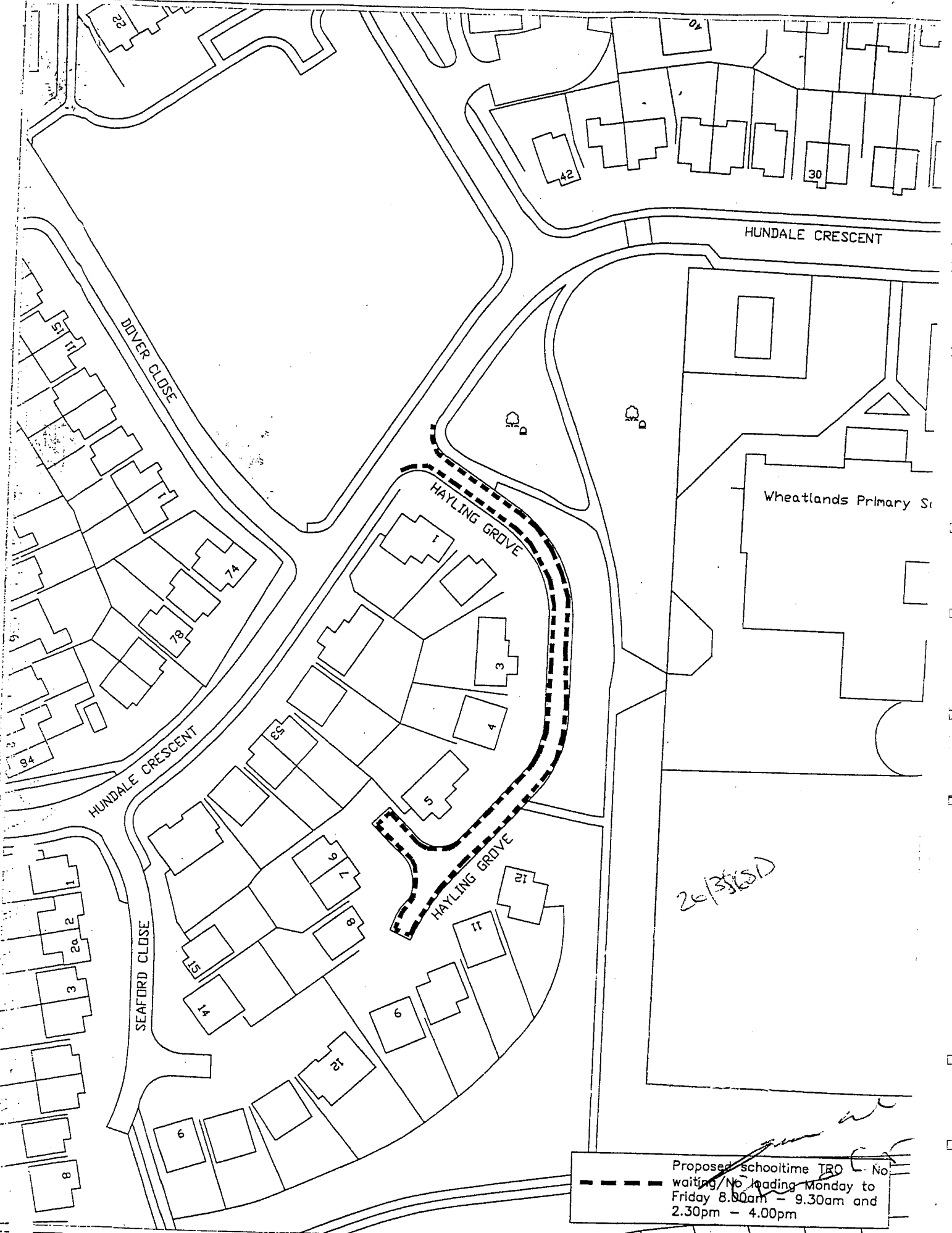
MERSEY ROAD, REDCAR
 PROPOSED TRO

Scale	1/1000	Drawn	ADT
		Traced	ACAD
Date	09/05/08	Checked	AAS



Joan Rees Phd, MRTPI
 Director of Development

Redcar & Cleveland Borough Council
 Development Department
 Belmont House,
 Rectory Lane,
 Guisborough
 TS14 7FD
 Tel: (01642) 444000
 Fax: (01287) 812565



Proposed schooltime TRO - No waiting/No loading Monday to Friday 8.30am - 9.30am and 2.30pm - 4.00pm



Area Management Department
 Belmont House,
 Rectory Lane,
 Guisborough
 TS14 7FD
 Tel: (01642) 444000
 Fax: (01287) 612565

Simon Dale
 Director of Area Management:

Scale	Hor. 1/1000 Vert. 1/1000	Drawn by	am
Date	01/02/2007	Traced by	.
Drg No	.	Checked by	ac
Hayling Grove, Bed...			

No waiting at any time (double yellow lines)

159

151

149b

160

8t

20/3/06 SD

ROCKET TERRACE

18

14

YORK ROAD



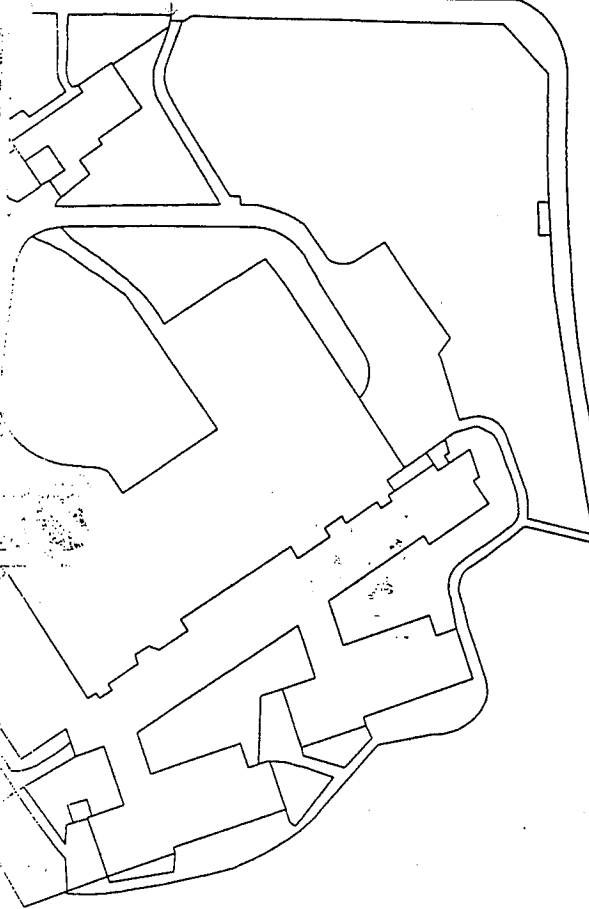
Area Management Department
Belmont House,
Rectory Lane,
Guisborough
TS14 7FD
Tel: (01642) 444000
Fax: (01287) 612565

Simon Dale
Director of Area Management

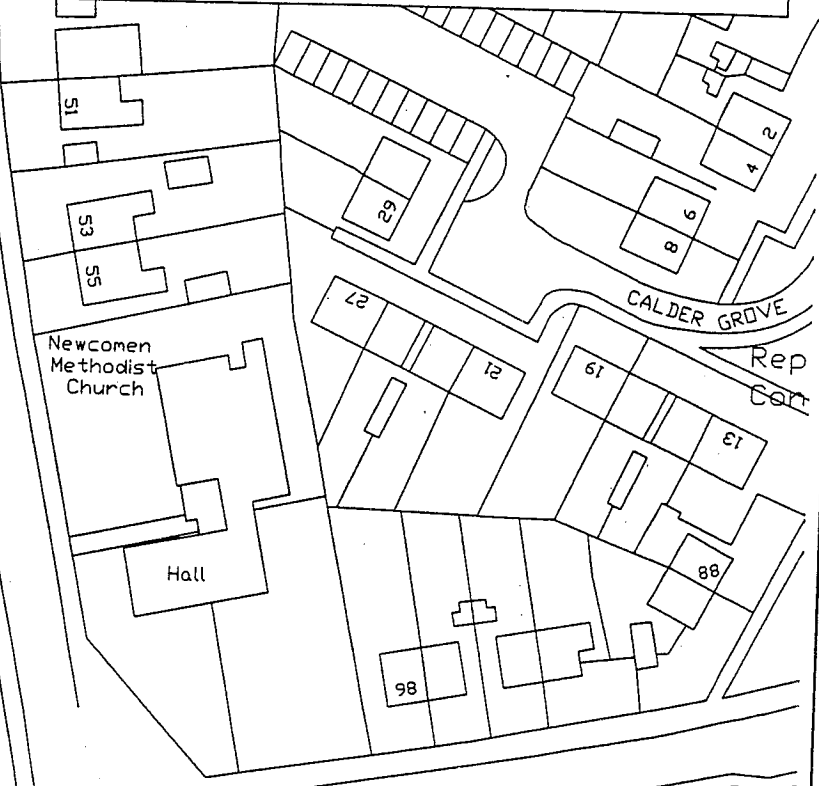
Scale 1/500	Drawn by ADT
Date 27/09/2006	Traced by ACAD
PROPOSED PARKING RESTRICTIONS	
ROCKET TERRACE, REDCAR	

NO WAITING AT ANYTIME
 PARKING RESTRICTIONS
 (DOUBLE YELLOW LINES)

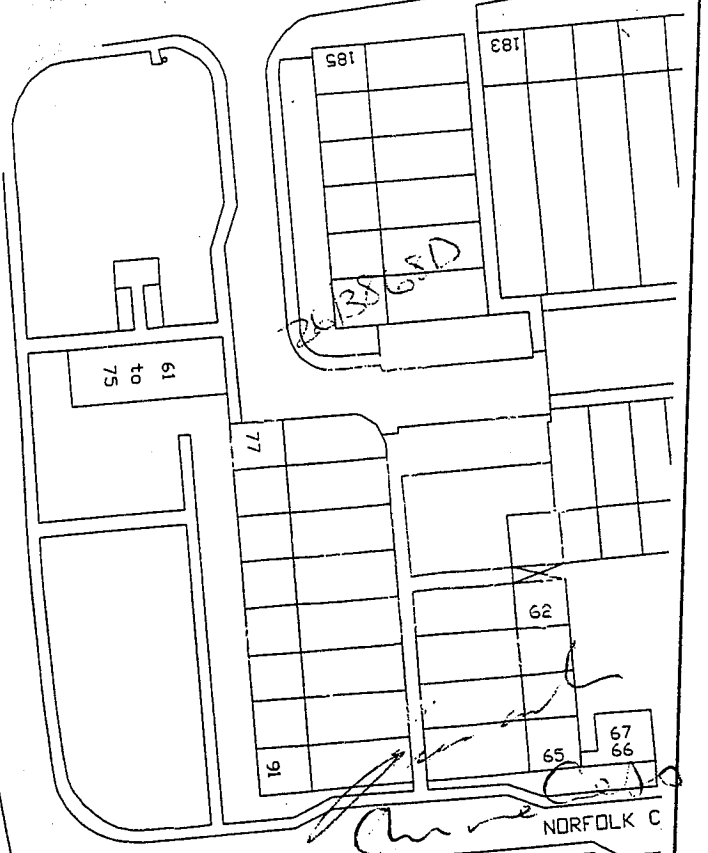
...NT ROAD



Primary School



...NEY ROAD



NORFOLK C



Area Management Department
 Belmont House,
 Rectory Lane,
 Guisborough
 TS14 7FD
 Tel: (01642) 444000
 Fax: (01287) 612565

Simon Dale
 Director of Area Management

Scale	NTS	Drawn by	ADT
Date	04/12/06	Traced by	ACAD
		Checked by	AC

TROUTBECK ROAD, REDCAR

Cinema

Sana

NEWCOMEN TERRACE

6.1m

Easingwold House

Fulford House

Ganton House

12

2

9

8

11

3

5

9

Existing limited waiting parking
bay to be changed into
resident parking bay



26/3565D

Chris Cr

Development Department
Belmont House,
Rectory Lane,
Guisborough
TS14 7FD
Tel: (01642) 444000
Fax: (01287) 612565



Joan Rees Phd, MRTPI
Director of Development

Scale	Hor. 1/500	Drawn by	AM
	Vert. 1/500	Traced by	
Date	27/09/2006		
Drig. No.			

Station Road, Redcar

Existing No Waiting at Anytime (double yellow line) restrictions
 Existing Resident Parking Bay Zone G
 Proposed new No Waiting at Anytime (double yellow lines) restrictions
 Proposed new parking bay



Redcar & Cleveland Borough Council
 Approved by the Planning Committee
 Borough Clerk
 Planning Department
 15.1.10

Simon Dale
 Director of Area Management



Drawn	ADT
Checked	ACAD
Date	07/11/05
Scale	1:100

7/10
 CORPORATION ROAD, REDCAR
 EXTENSION OF TRO

Project
[Handwritten signature]

**REDCAR AND CLEVELAND BOROUGH COUNCIL
(REDCAR) (WAITING AND LOADING AND PARKING PLACES)
(CONSOLIDATION) (AMENDMENT) ORDER (NO. 1) 2007**

The Council of the Borough of Redcar and Cleveland (hereinafter referred to as "the Council") under Sections 1, 2, 4, 32, 35, 45, 46, 47, 53 and Part IV of Schedule 9 of the Road Traffic Regulation Act 1984 (hereinafter referred to as the "Act of 1984") and of all other enabling powers and after consultation with the Chief Officer of Police in accordance with part III of Schedule 9 of the Act of 1984 hereby makes the following Order:-

1. This Order shall come into operation on the 25th day of June 2007 and may be cited as the Redcar and Cleveland (Consolidation) (Amendment) (Order No. 1) 2007.
2. The Redcar and Cleveland Borough Council (Redcar) (Waiting and Loading and Parking Places) (Consolidation) Order 2003 ("the Order") is hereby amended as follows:-

- a) Delete from Schedule No. 1.00 – No Waiting at Any Time

Peirson Street

The south side from its junction with Clifford Street for a distance of 16 metres in an easterly direction.

- b) Insert to Schedule No. 1.00 – No Waiting at Any Time

Corporation Road

The north side from its junction with Sandringham Road for a distance of 10 metres in a westerly direction.

South side from a point 115 metres west of its junction with West Dyke Road, for a distance of 167 metres in a westerly direction.

Peirson Street

The south side from its junction with Elliot Street for a distance of 24 metres in an easterly direction.

Sandringham Road

The west side from its junction with Corporation Road for a distance of 16 metres in a northerly direction.

Warwick Road

North side, from its junction with Bamburgh Close, for a distance of 33 metres in an easterly direction.

- c. Insert Schedule No. 2.12 – No Waiting Monday to Friday 8:30 - 9:30 a.m. and 2:45 p.m. – 3:45 p.m.
- d. Insert the following to Schedule No. 2.12 – No Waiting Monday to Friday 8:30 a.m. – 9:30 a.m. and 2:45 p.m. – 3:45 p.m.

Keswick Road

The east side from a point 10 metres south of its junction with Ambleside Avenue to a point 13 metres north of its junction with Penrith Close

The west side from a point 10 metres north of its junction with Penrith Close to a point 10 metres south of its junction with Ambleside Avenue.

Mersey Road

East side from a point 60 metres south of its junction with Corporation Road, for a distance of 284 metres in a southerly direction.

West side from a point 60 metres south of its junction with Corporation Road to its junction with St Joseph's Court.

West side from its junction with St Joseph's Court to its junction with Thames Road.

St Joseph's Court

Both sides from its junction with Mersey Road for its full length.

Thames Road

North side from its junction with Mersey Road, for a distance of 10 metres in a westerly direction.

- e. Insert Schedule No. 2.30 – No Waiting Monday to Friday 8:00 a.m. – 9:30 a.m. and 2:30 p.m. – 4:00 p.m.
- f. Insert the following to Schedule No. 2.30 – No Waiting Monday to Friday 8:00 a.m. – 9:30 a.m. and 2:30 p.m. – 4:00 p.m.

Hayling Grove

Both sides from its junction with Hunsdale Crescent its full length.

- g. Delete the following from Schedule No. 2.9 – No Waiting Saturday and Sunday 9:00 a.m. – 3:00 p.m.

West Dyke Road

East side from a point 100 metres south of its junction with Thrush Road for a distance of 42 metres in a southerly direction.

Coniston Avenue

East side from its junction with Lakes Avenue for a distance of 38 metres in a southerly direction.

Rydal Avenue

East side from its junction with Lakes Avenue for a distance of 27 metres in a northerly direction.

Brooksbank Avenue

Both sides from its junction with West Dyke Road for a distance of 10 metres in a westerly direction.

Westfield Avenue

South side from its junction with West Dyke Road for a distance of 15.5 metres in a westerly direction.

- h. By inserting the following to Schedule No. 3.11 – No Loading and Unloading Monday to Friday 8:30 a.m. – 9:30 a.m. and 2:45 p.m. – 3:45 p.m.

Keswick Road

The east side from a point 10 metres south of its junction with Ambleside Avenue to a point 13 metres north of its junction with Penrith Close.

The west side from a point 10 metres north of its junction with Penrith Close to a point 10 metres south of its junction with Ambleside Avenue.

Mersey Road

East side from a point 60 metres south of its junction with Corporation Road for a distance of 284 metres in a southerly direction.

West side from a point 60 metres south of its junction with Corporation Road to its junction with St Joseph's Court.

West side from its junction with St Joseph's Court to its junction with Thames Road.

St Joseph's Court

Both sides from its junction with Mersey Road for its full length.

Thames Road

~~North side from its junction with Mersey Road for a distance of 10 metres in a westerly direction.~~

- i. By deleting from Schedule 3.80 – No Loading and Unloading Saturday and Sunday 9:00 a.m. – 3:00 p.m.

South side from its junction with West Dyke Road to its junction with Coniston Avenue.

Coniston Avenue

East side from its junction with Lakes Avenue for a distance of 38 metres in a southerly direction.

Rydal Avenue

East side from its junction with Lakes Avenue for a distance of 27 metres in a northerly direction.

Brooksbank Avenue

Both sides from its junction with West Dyke Road for a distance of 10 metres in a westerly direction.

Orchard Road

North side from its junction with West Dyke Road for a distance of 15 metres in a westerly direction.

Westfield Avenue

South side from its junction with West Dyke Road for a distance of 15.5 metres in a westerly direction.

- j. By deleting the following from Schedule No. 7.20 – Limited Waiting 8:00 a.m. – 6:00 p.m. 1 Hour, no return within 2 Hours.

Scott Street

East side from a point 8 metres north of its junction with Thrush Road for a distance of 9 metres in a northerly direction.

- k. By inserting the following into Schedule No. 7.20 – Limited Waiting 8:00 a.m. – 6:00 p.m. 1 Hour, no return within 2 Hours.

Scott Street

East side from a point 8 metres north of its junction with Thrush Road for a distance of 7 metres in a northerly direction.

- l. By deleting the following from Schedule 7.50 – Limited Waiting Monday to Saturday 8:00 a.m. – 6:00 p.m. 2 Hours no return within 2 Hours.

Station Road

West side from a point 10 metres south of its junction with Newcomen Terrace for a distance of 18 metres.

- m. By inserting Schedule No. 12.00 – Unlimited Waiting Bay.
- n. By inserting the following into Schedule No. 12.00 Unlimited Waiting Bay.

STREET

PEIRSON STREET

18

17

26

28

36

40

48

7.6m

24/3/08 SD

Existing No Waiting at any time restrictions (Double Yellow Lines)

Proposed No Waiting at any time restrictions (Double Yellow Lines)



Development Department
 Belmont House,
 Rectory Lane,
 Guisborough
 TS14 7ED
 Tel: (01642) 444000
 Fax: (01287) 612885

Joan Rees PhD MRTPI
 Director of Development

Scale	Hor. 1/400	Drawn by	AM
	Vert. 1/400	Traced by	
Date	22/09/2006		
Dwg. No.			

Peirson Street, Redcar

School Time Traffic Regulation
 Order. Mon - Fri. 8.30am - 9.30am
 and 2.45pm - 3.45pm

Sacred Heart
 RC Secondary School

St Dominic's RC Primary School

MERSEY ROAD

ST JOSEPH'S COURT

THAMES ROAD

24/386SD

Handwritten signature

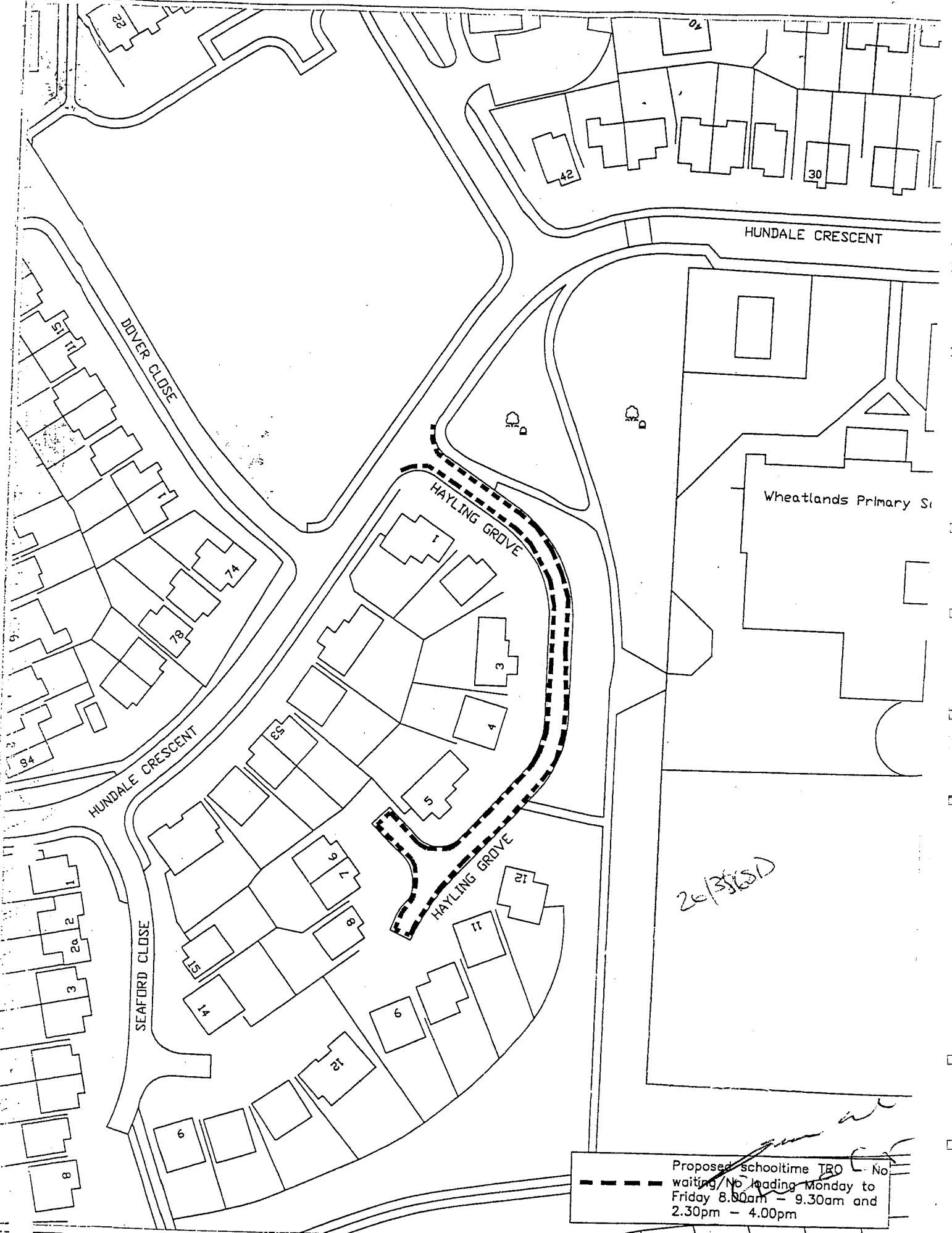
MERSEY ROAD, REDCAR
 PROPOSED TRO

Scale	1/1000	Drawn	ADT
		Traced	ACAD
Date	09/05/08	Checked	AAS



Joan Rees Phd, MRTPI
 Director of Development

Redcar & Cleveland Borough Council
 Development Department
 Belmont House,
 Rectory Lane,
 Guisborough
 TS14 7FD
 Tel: (01642) 444000
 Fax: (01287) 812565



Proposed schooltime TRO - No waiting/No loading Monday to Friday 8.00am - 9.30am and 2.30pm - 4.00pm



Area Management Department
 Belmont House,
 Rectory Lane,
 Guisborough
 TS14 7FD
 Tel: (01642) 444000
 Fax: (01287) 612565

Simon Dale
 Director of Area Management:

Scale	Hor. 1/1000 Vert. 1/1000	Drawn by	am
Date	01/02/2007	Traced by	.
Drg No	.	Checked by	ac
Hayling Grove, Bed...			

No waiting at any time (double yellow lines)

159

151

149b

160

8t

20/3/06 SD

ROCKET TERRACE

18

14

YORK ROAD



Area Management Department
Belmont House,
Rectory Lane,
Guisborough
TS14 7FD
Tel: (01642) 444000
Fax: (01287) 612565

Simon Dale
Director of Area Management

Scale 1/500

Drawn by ADT

Date 27/09/2006

Traced by ACAD

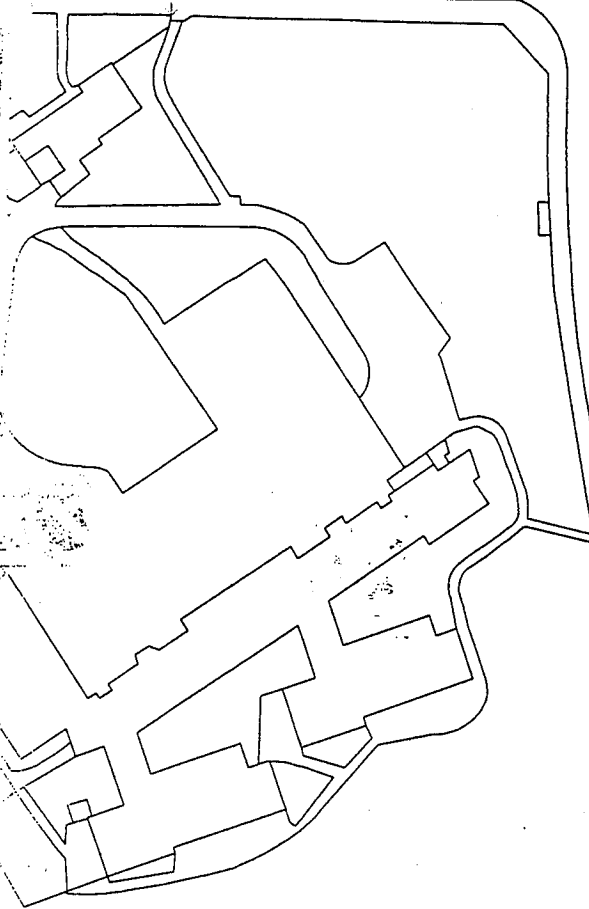
Checked by AC

PROPOSED PARKING RESTRICTIONS

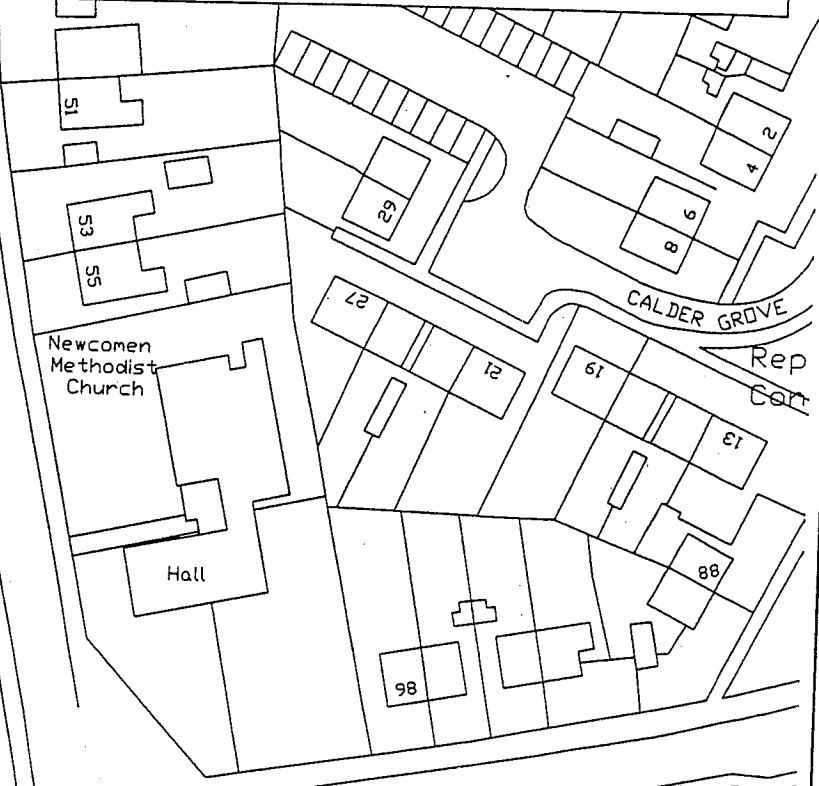
ROCKET TERRACE, REDCAR

NO WAITING AT ANYTIME
 PARKING RESTRICTIONS
 (DOUBLE YELLOW LINES)

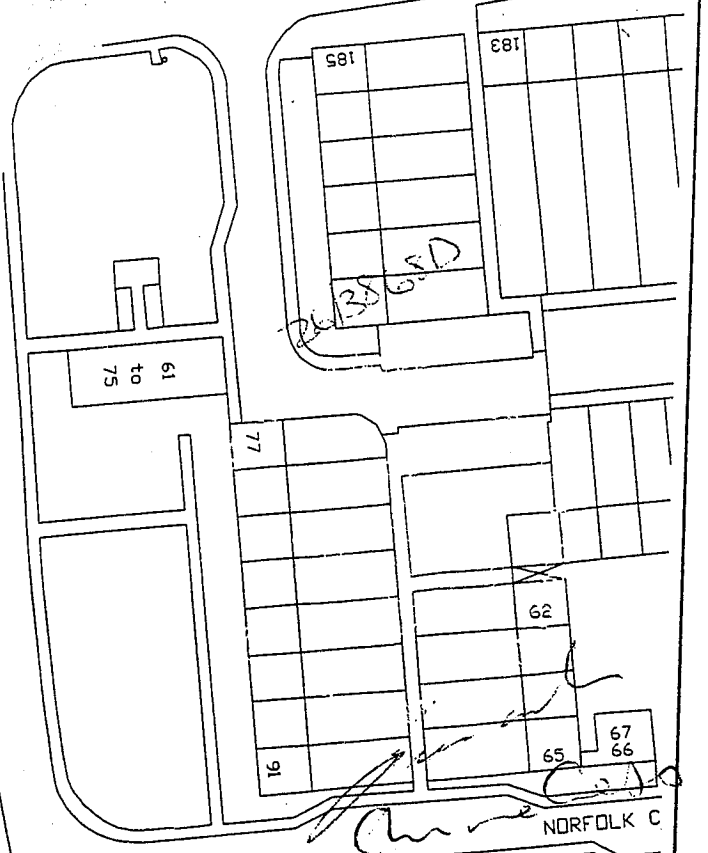
...NT ROAD



Primary School



...NEY ROAD



Area Management Department
 Belmont House,
 Rectory Lane,
 Guisborough
 TS14 7FD
 Tel: (01642) 444000
 Fax: (01287) 612565

Simon Dale
 Director of Area Management

Scale	NTS	Drawn by	ADT
Date	04/12/06	Traced by	ACAD
		Checked by	AC

TROUTBECK ROAD, REDCAR

Cinema

Sana

NEWCOMEN TERRACE

6.1m

Easingwold House

Fulford House

Ganton House

12

2

9

8

11

3

5

9

Existing limited waiting parking
bay to be changed into
resident parking bay



26/3565D

Chris Cr

Development Department

Belmont House,

Rectory Lane,

Guisborough

TS14 7FD

Tel: (01642) 444000

Fax: (01287) 612565



Joan Rees Phd, MRTPI
Director of Development

Scale 1/500
Hor. 1/500
Vert. 1/500

Date 27/09/2006

Drawn by AM
Traced by
Checked by

Dwg. No.

Station Road, Redcar

Existing No Waiting at Anytime (double yellow line) restrictions
 Existing Resident Parking Bay Zone G
 Proposed new No Waiting at Anytime (double yellow lines) restrictions
 Proposed new parking bay



Redcar & Cleveland Borough Council
 Planning & Development Department
 Borough Hall
 Railway Lane
 Redcar, Cl. A. 11
 TS 11 2D

Simon Dale
 Director of Area Management



Drawn	ADT
Checked	ACAD
Checked	AC
Scale	1:100
Date	07/11/05

CORPORATION ROAD, REDCAR
 EXTENSION OF TR0

Project
[Handwritten signature]