

McLean Road, Brotton

McLean Road, both sides from its junction with High Street for 60 metres in a northerly direction

Cragside, both sides from its junction with Mclean Road for 5 metres in an easterly direction.

High Street, the north side from its junction with McLean Road for 10 metres in a westerly direction.

High Street, the north side from its junction with McLean Road for 20 metres in an easterly direction

LOFTUS

SCHEDULE NO 1.00 – NO WAITING AT ANY TIME

Access Road between No. 63 and Central Garage, West Road, Loftus

The east side from its junction with West Road for a distance of 20 metres in a southerly direction.

The west side from its junction with West Road for a distance of 20 metres in a southerly direction.

Boulby Drive, Loftus

From a point 8 metres south of its junction with Arlington Street for a distance of 7 metres in a southerly direction

Co-operative Terrace, Loftus

The east side from its junction with the A174 for a distance of 40 metres in a southerly direction.

The west side from its junction with the A174 for a distance of 30 metres in a southerly direction.

Tees Street, Loftus

The east side from its junction with Whitby Road for a distance of 10 metres in a southerly direction.

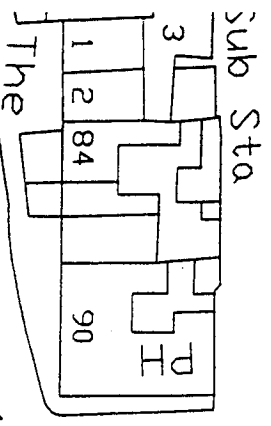
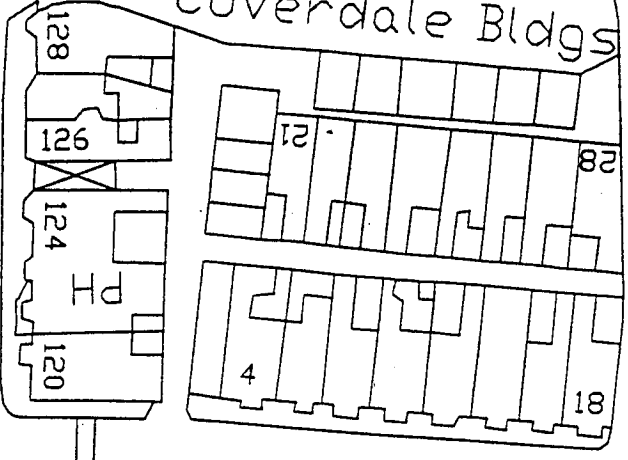
The west side from its junction with Whitby Road for a distance of 10 metres in a southerly direction.

West Park Avenue, Loftus

The east side from its junction with West Road for a distance of 25 metres in a southerly direction.

The west side from its junction with West Road for a distance of 10 metres in a southerly direction.

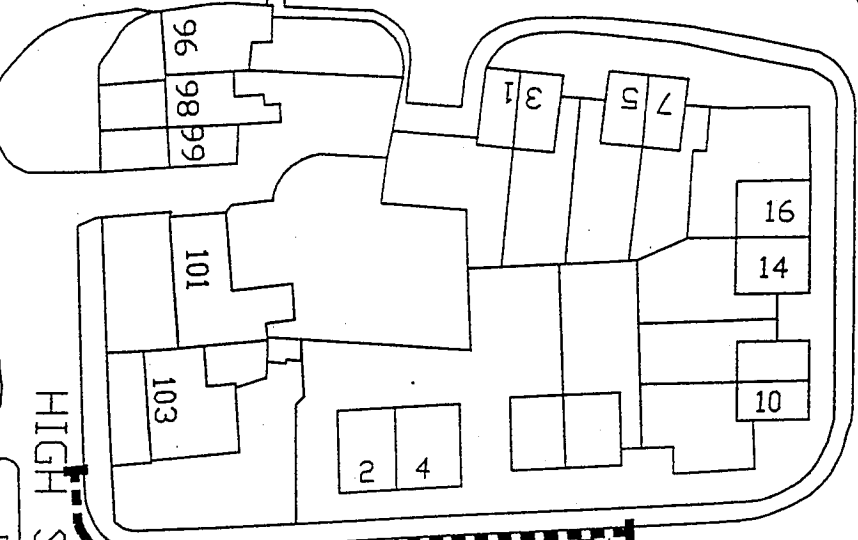
Coverdale Bldgs



enfold 133.5m

KEY TO WAITING RESTRICTIONS DISPLAYED
- No waiting at any time

Shelter

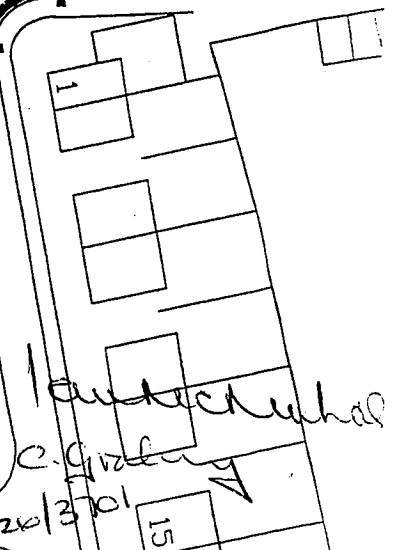
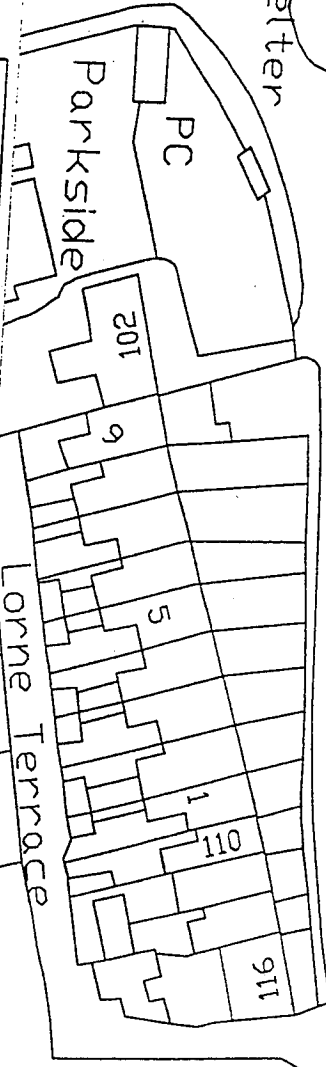


MCCLENNAN ROAD

HIGH STREET

LB

130.8m



CRAGSIDE



East End Cottage



Development Department
Belmont House,
Reclory Lane,
Guisborough

TS14 7FD
Tel: (01847) 444000
Fax: (01847) 642222

Joan Rees PhD, MRTP
Director of Development

Scale Hor. NTS
Vert. NTS
Date 29/06/2006

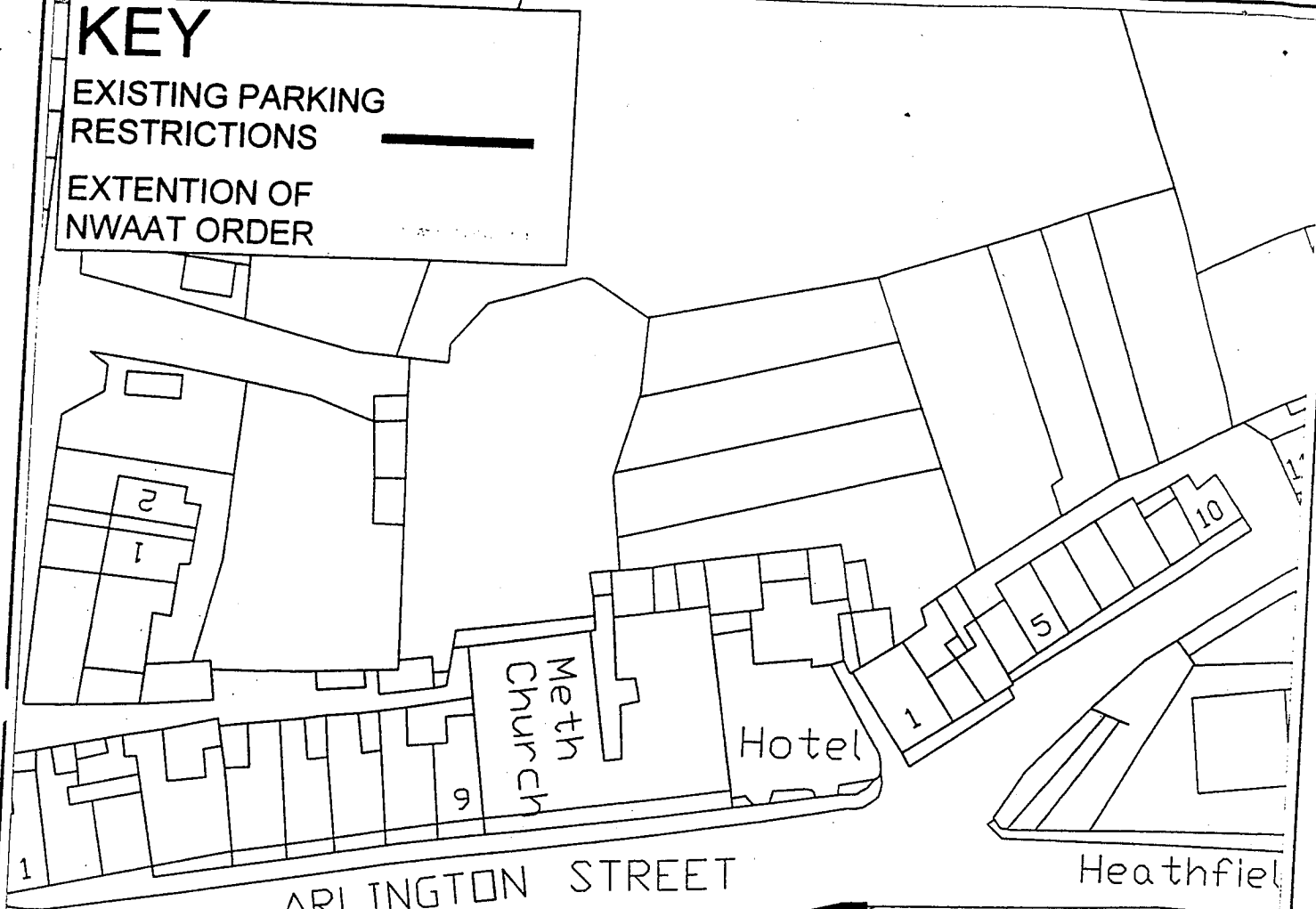
Drawn by AM
Traced by
Checked by

Fig. No.

KEY

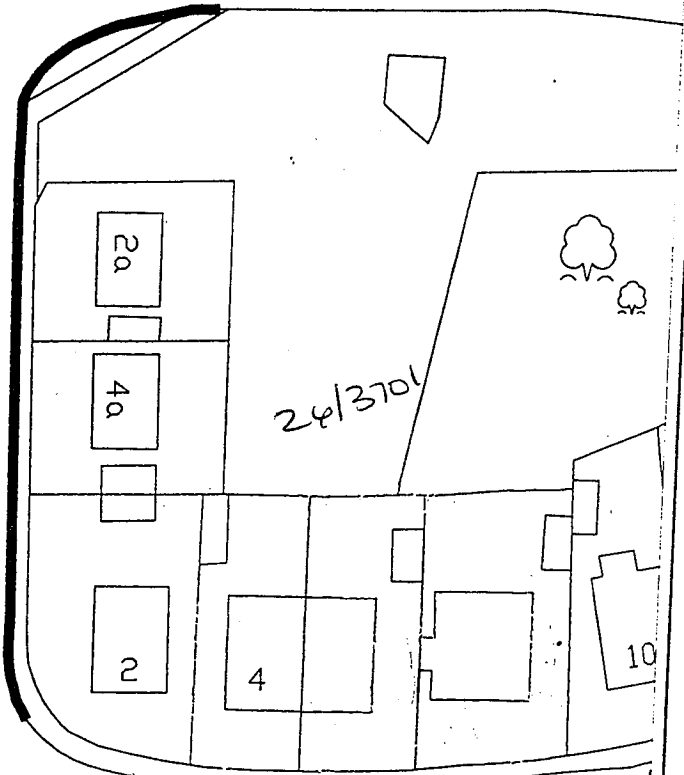
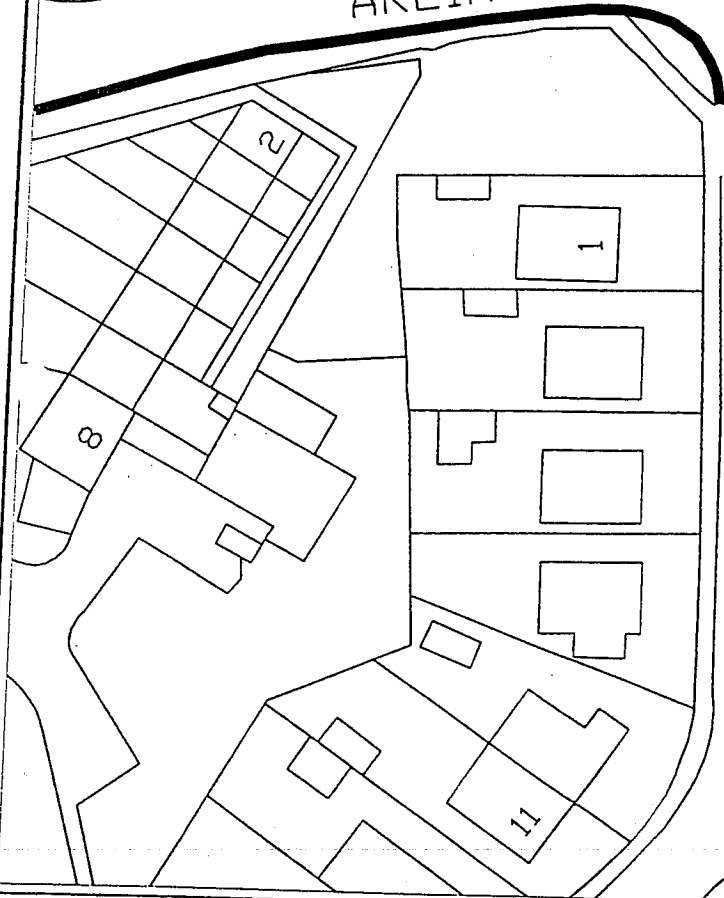
EXISTING PARKING RESTRICTIONS 

EXTENTION OF NWAAT ORDER 



ARLINGTON STREET

Heathfield



C. Graham
Janet Kitchin

CROMWELL

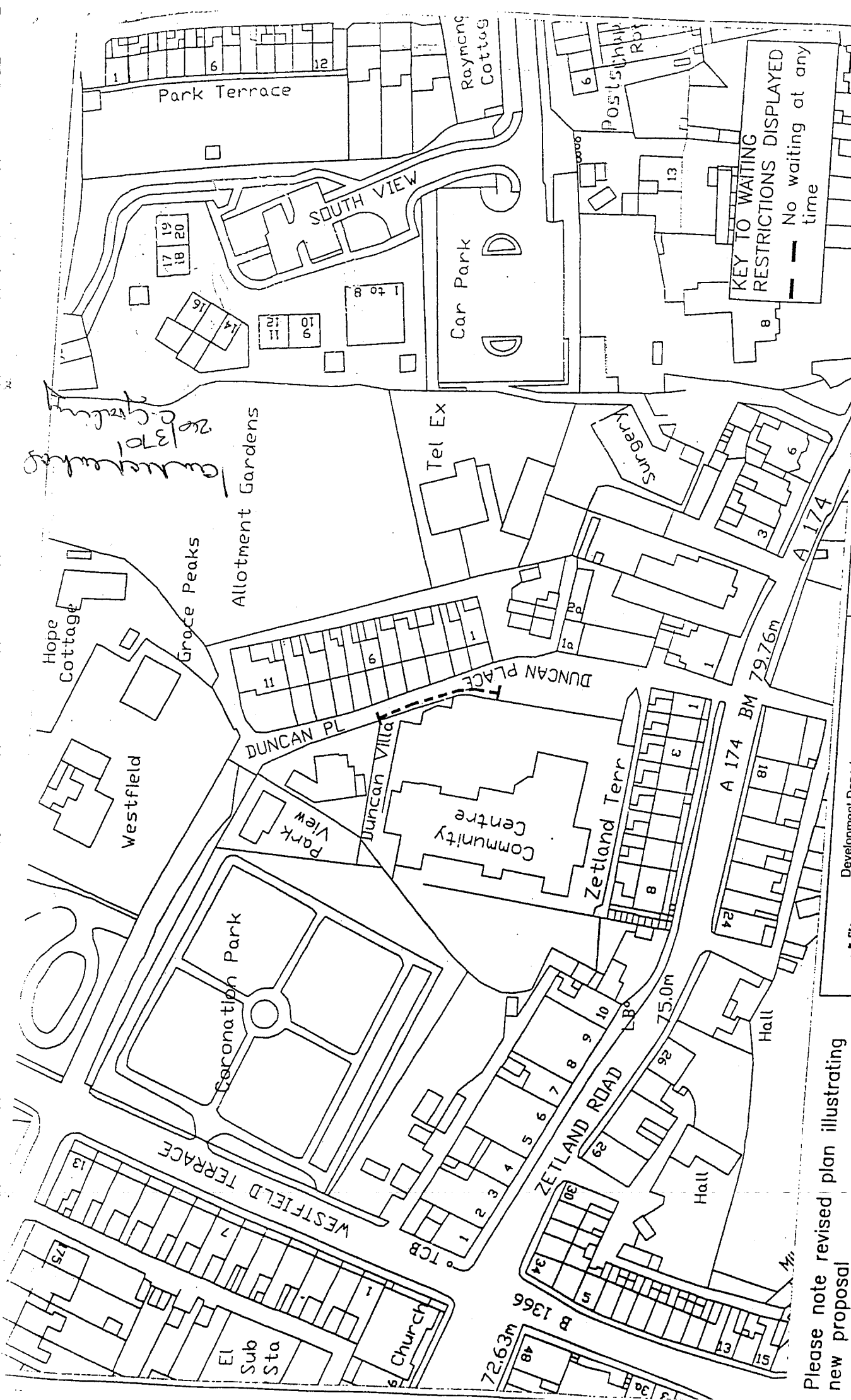


Development Department
Belmont House,
Rectory Lane,
Guisborough
TS14 7FD
Tel: (01642) 444000
Fax: (01287) 612565

Jean Rees Phd, MRTPI
Director of Development

Scale NTS	Drawn by ADT
Date 22/05/2006	Traced by ACAD
	Checked by

BOULBY DRIVE, LOFTUS



*Carriageway
2013701
2013701*

KEY TO WAITING
RESTRICTIONS DISPLAYED
— No waiting at any time

Scale	Hbr. NTS	Drawn by	AM
	Ver. NTS	Traced by	
	Date	07/06/2006	
	Orig. No.		

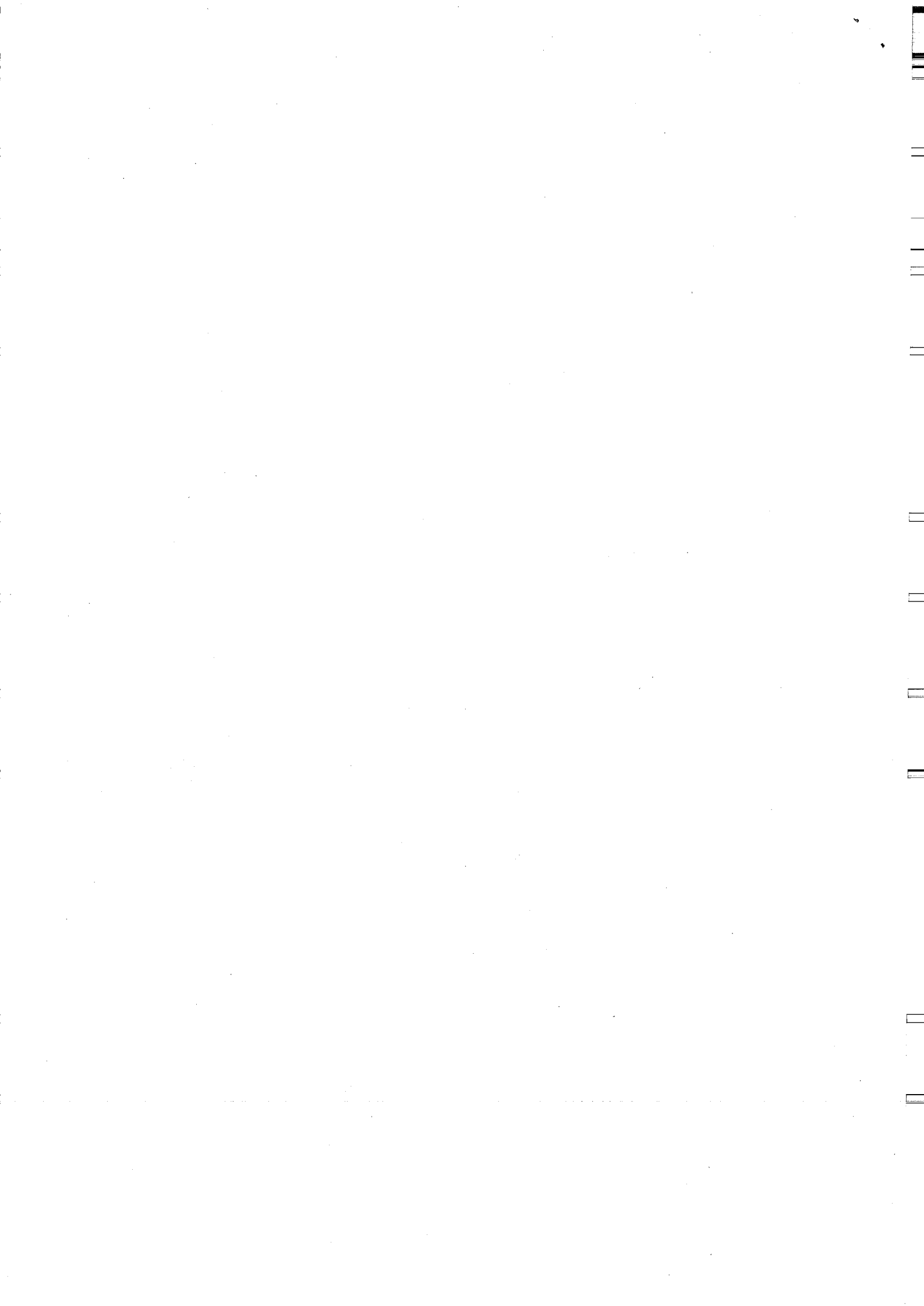
Joan Rees Phd, MKTPI
Director of Development

Development Department
Belmont House,
Rectory Lane,
Guisborough
TS14 7FD
Tel: (01642) 441000
Fax: (01287) 612565



Please note revised plan illustrating
new proposal

Duncan Place, 1:500



McLean Road, Brotton

McLean Road, both sides from its junction with High Street for 60 metres in a northerly direction

Cragside, both sides from its junction with Mclean Road for 5 metres in an easterly direction.

High Street, the north side from its junction with McLean Road for 10 metres in a westerly direction.

High Street, the north side from its junction with McLean Road for 20 metres in an easterly direction

LOFTUS

SCHEDULE NO 1.00 – NO WAITING AT ANY TIME

Access Road between No. 63 and Central Garage, West Road, Loftus

The east side from its junction with West Road for a distance of 20 metres in a southerly direction.

The west side from its junction with West Road for a distance of 20 metres in a southerly direction.

Boulby Drive, Loftus

From a point 8 metres south of its junction with Arlington Street for a distance of 7 metres in a southerly direction

Co-operative Terrace, Loftus

The east side from its junction with the A174 for a distance of 40 metres in a southerly direction.

The west side from its junction with the A174 for a distance of 30 metres in a southerly direction.

Tees Street, Loftus

The east side from its junction with Whitby Road for a distance of 10 metres in a southerly direction.

The west side from its junction with Whitby Road for a distance of 10 metres in a southerly direction.

West Park Avenue, Loftus

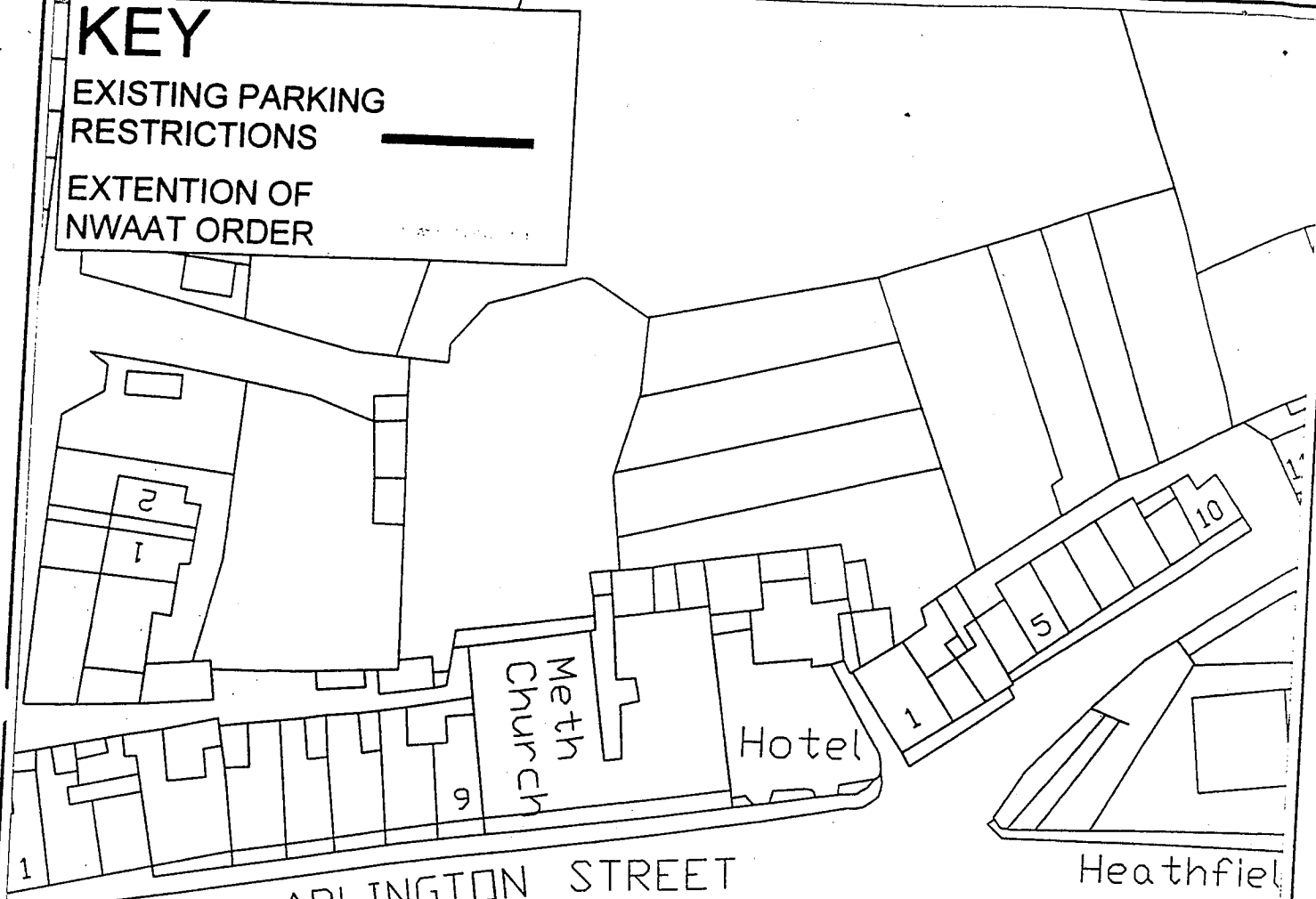
The east side from its junction with West Road for a distance of 25 metres in a southerly direction.

The west side from its junction with West Road for a distance of 10 metres in a southerly direction.

KEY

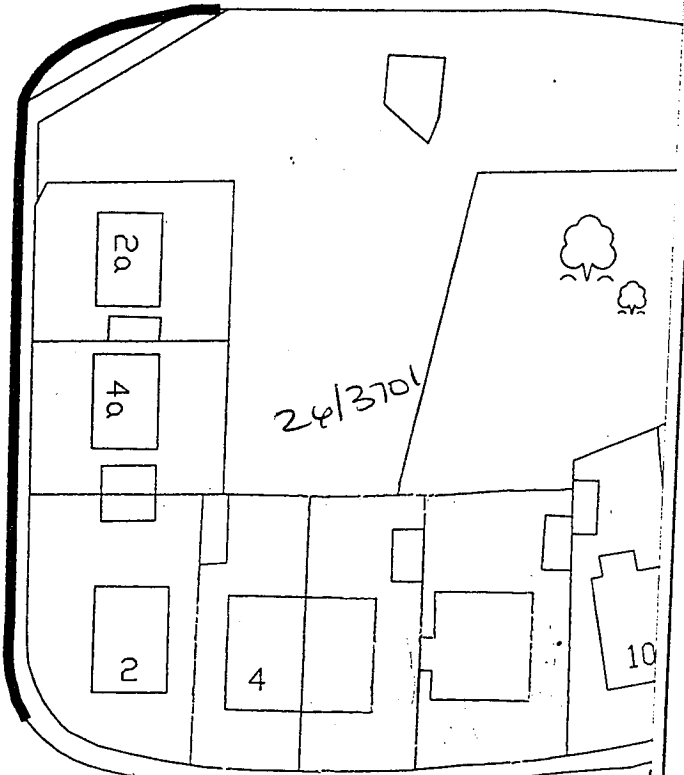
EXISTING PARKING RESTRICTIONS 

EXTENTION OF NWAAT ORDER 



ARLINGTON STREET

Heathfield



C. Graham
Janice K... ..

CROMWELL

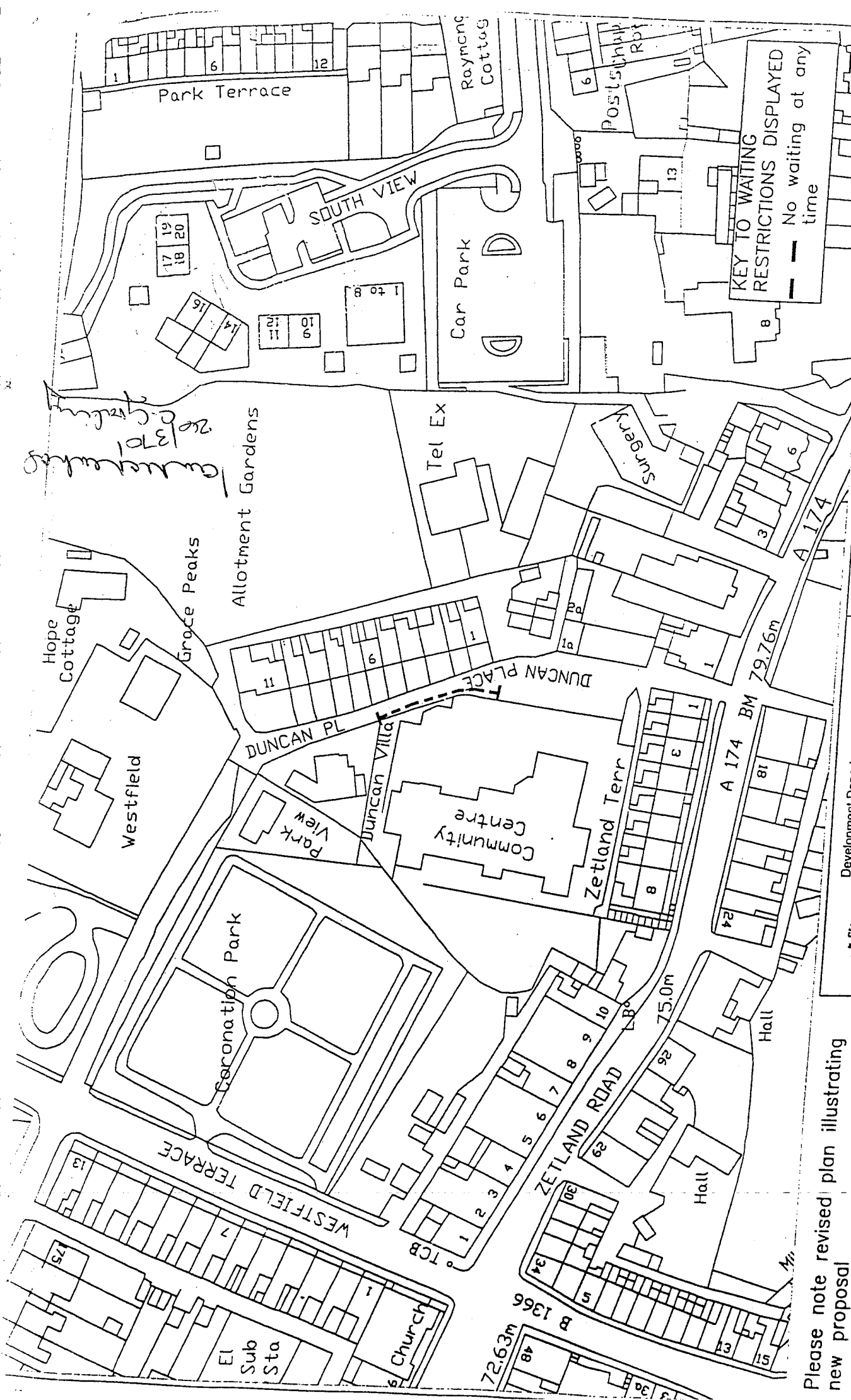


Development Department
Belmont House,
Rectory Lane,
Guisborough
TS14 7FD
Tel: (01642) 444000
Fax: (01287) 612565

Jean Rees Phd, MRTPI
Director of Development

Scale NTS	Drawn by ADT
Date 22/05/2006	Traced by ACAD
	Checked by .

BOULBY DRIVE, LOFTUS



Scale	Hbr. NTS	Drawn by	AM
	Ver. NTS	Traced by	
	Date	07/06/2006	
	Org. No.		

Joan Rees Phd, MKTPI
 Director of Development

Development Department
 Belmont House,
 Rectory Lane,
 Guisborough
 TS14 7FD
 Tel: (01642) 441000
 Fax: (01287) 612565



Please note revised plan illustrating new proposal

Duncan Place, 1366

