

**REDCAR AND CLEVELAND BOROUGH COUNCIL
(GUISBOROUGH) (WAITING, LOADING AND PARKING PLACES)
(CONSOLIDATION) (AMENDMENT)
ORDER (NO.1) 2005**

The Council of the Borough of Redcar and Cleveland (hereinafter referred to as "the Council") under Sections 1, 2, 4, 32, 35, 45, 47, 53 and Part IV of Schedule 9 of the Road Traffic Regulation Act 1984 (hereinafter referred to as the "Act of 1984") and of all other enabling powers and after consultation with the Chief Officer of Police in accordance with Part III of Schedule 9 of the Act of 1984 hereby makes the following Order:-

1. This Order shall come into operation on the *15th* day of *August*, 2005 and may be cited as the Redcar and Cleveland Borough Council (Guisborough) (Waiting, Loading and Parking Places) (Consolidation) (Amendment) Order (No. 1) 2005.
2. The Redcar and Cleveland Borough Council (Guisborough) (Waiting and Loading and Parking Places) (Consolidation) Order 2003 ("the Order") is hereby amended as follows:-
 - (a) Insert to Schedule 1.00 (No Waiting at anytime):-

Fountains Close

 - (i) North side. From its junction with Belmangate for 6 metres in a westerly direction.
 - (ii) North side. From a point 18 metres west of its junction with Belmangate for a distance of 18 metres in a westerly direction to the existing restriction.

Patten Lane

 - (i) From a point 12 metres east of its junction with Northgate for 14 metres in an easterly direction.

Hutton Lane

 - (i) North west side. From its southern junction with Thames Avenue for 66 metres in a south westerly direction and 30 metres in a north easterly direction.

Thames Avenue

 - (i) Both sides. From its southern junction with Hutton Lane for 26 metres in a north westerly direction.

Belmangate

 - (i) West side. From its junction with Fountains Close for 7 metres in a northerly direction.
 - (ii) East side. From its junction with Rectory Lane for 39 metres in a southerly direction.

Belmangate Access Road fronting Nos. 60 – 92

 - (i) East side. From the end of the existing restrictions opposite No. 60 for 5 metres in a southerly direction.

- (ii) West side. From its junction with Bank Street to its junction with Belmont Terrace.

Walkers Row Access Road (to Hospital)

- (i) West side. From the Hospital entrance gate for approximately 45 metres in a southerly direction to the limited waiting bay on Walkers Row.
- (ii) East side. From its junction with Auckland Street for 14 metres in a southerly direction.

Rear Wilson Street (East side) - Access to Kindlewood Gardens

- (i) North side. From its junction with Wilson Street for 16 metres in an easterly direction.

Market Place

- (i) North side. From the centre line of Bow Street for 32 metres in an easterly direction.
 - (ii) North side. From its junction with the centre line of Bow Street for 32 metres in a westerly direction.
 - (iii) South side. From a point opposite the Western Boundary Line of No. 2 Church Street for 61 metres in a south westerly direction.
 - (iv) South side. From its junction with Bow Street to its junction with Bakehouse Square.
- (b) Delete paragraphs (ii) and (v) from Schedule 1 of the Order (No Waiting at Anytime – Westgate).
 - (c) Delete paragraphs (i) and (ii) from Schedule 1 of the Order (No Waiting at Anytime – Church Street) and substitute for the following:-
 - (i) **Church Street (West side)**
From a point 32 metres east of the centre line of Bow Street for a distance of 138 metres easterly and then in a northerly direction.
 - (ii) **Church Street (South side)**
From a point 48 metres east of its junction with Bow Street to its junction with Avenue Place.
 - (d) Insert to Schedule 2.00 (No Waiting Monday to Saturday 8:00 a.m. to 6:00 p.m.):-

Avenue Place

- (i) South side. From a point 10 metres east of its junction with Redcar Road for 27 metres.

- (e) Delete from Schedule No.8.00 (Disc Parking Monday – Saturday 08:00 a.m. – 6.00 p.m. no return within 2 hrs) Column 1 (Situation of Parking Place), first entry (Westgate, Guisborough – North side), the lengths and sides of road mentioned therein and substitute for the following:-

'From Northgate for a distance of 10 metres in an easterly direction'.

- (f) Delete Article 68 (1) (Disc Parking Places – Schedule 8.00) of the Order and substitute for the following:-

'The driver of a vehicle shall, on the arrival of the vehicle and throughout the stay at a parking place during the prescribed hours, exhibit on the vehicle a parking disc in accordance with the following provisions of this Article'.

- (g) Delete 'Bakehouse Square' from Column 1 and the lengths and sides of road from column 2 of Schedule 9 of the Order (Disabled Parking Places at Anytime) and insert the following to Schedule 9 of the Order (Disabled Parking Place 08:00 a.m. to 6:00 p.m.):-

Bakehouse Square

- (i) East side. From a point 14 metres south of its junction with Westgate for 5 metres in a southerly direction. (2 spaces).

REVOCATIONS

- (h) Delete from Schedule 1.0 of the Order (No Waiting at Anytime):-

- (i) **Belmangate Access Road**
East side. From the end of the existing restriction opposite its junction with Belmont Terrace for 5 metres in a northerly direction.

- (i) **Avenue Place**
South side. From a point 10 metres east of its junction with Redcar Road for approximately 27 metres.

- (i) Delete from Schedule 2.7 of the Order (No Waiting Monday – Friday 08:00 a.m. – 09:30 a.m. and 2:30 p.m. – 4:00 p.m.) and Schedule 3.5 of the Order (No Loading/Unloading Monday – Friday 08:00 a.m. – 09:30 a.m. and 2:30 p.m. – 4:00 p.m.):-

Aldenham Road

- (i) West side. From a point 147 metres south east of its junction with Hutton Lane for a distance of 42 metres in a southerly direction.

- (ii) East side:

- (i) From the northern side of the vehicular entrance to old school site for a distance of 15 metres in a northerly direction.

- (ii) From the south side of the vehicular entrance to the old school site for a distance of 6 metres in a southerly direction.
- (iii) From its junction with Roxby Avenue for a distance of 27 metres in a northerly direction.
- (iv) From its junction with Roxby Avenue for a distance of 24 metres in a southerly direction.

Roxby Avenue

- (i) South side. From its junction with Aldenham Road for a distance of 27 metres in an easterly direction.
- (ii) North side. From its junction with Aldenham Road for a distance of 20 metres in an easterly direction.
- (j) Delete from Schedule No. 7.70 (Limited Waiting; Monday – Saturday 08:00 a.m. – 6:00 p.m., 1 hour, no return within 2 hours):-

Redcar Road, Guisborough

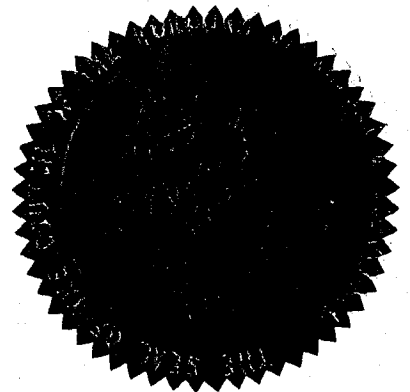
- (i) East side. From a point 31 metres south of its junction with Avenue Place for a distance of 8 metres in a southerly direction.

- 3. The provisions of existing Traffic Regulation Orders are revoked insofar as there are inconsistencies with this Order.
- 4. The Interpretation Act 1978 shall apply for the interpretation of this Order as it applies for the interpretation of an Act of Parliament.

Given under the COMMON SEAL of the COUNCIL OF THE BOROUGH OF REDCAR AND CLEVELAND this 25th day of July, 2005

26/3275D

THE COMMON SEAL of THE)
 COUNCIL OF THE BOROUGH)
 OF REDCAR AND CLEVELAND)
 was hereunto affixed in the)
 presence of:)

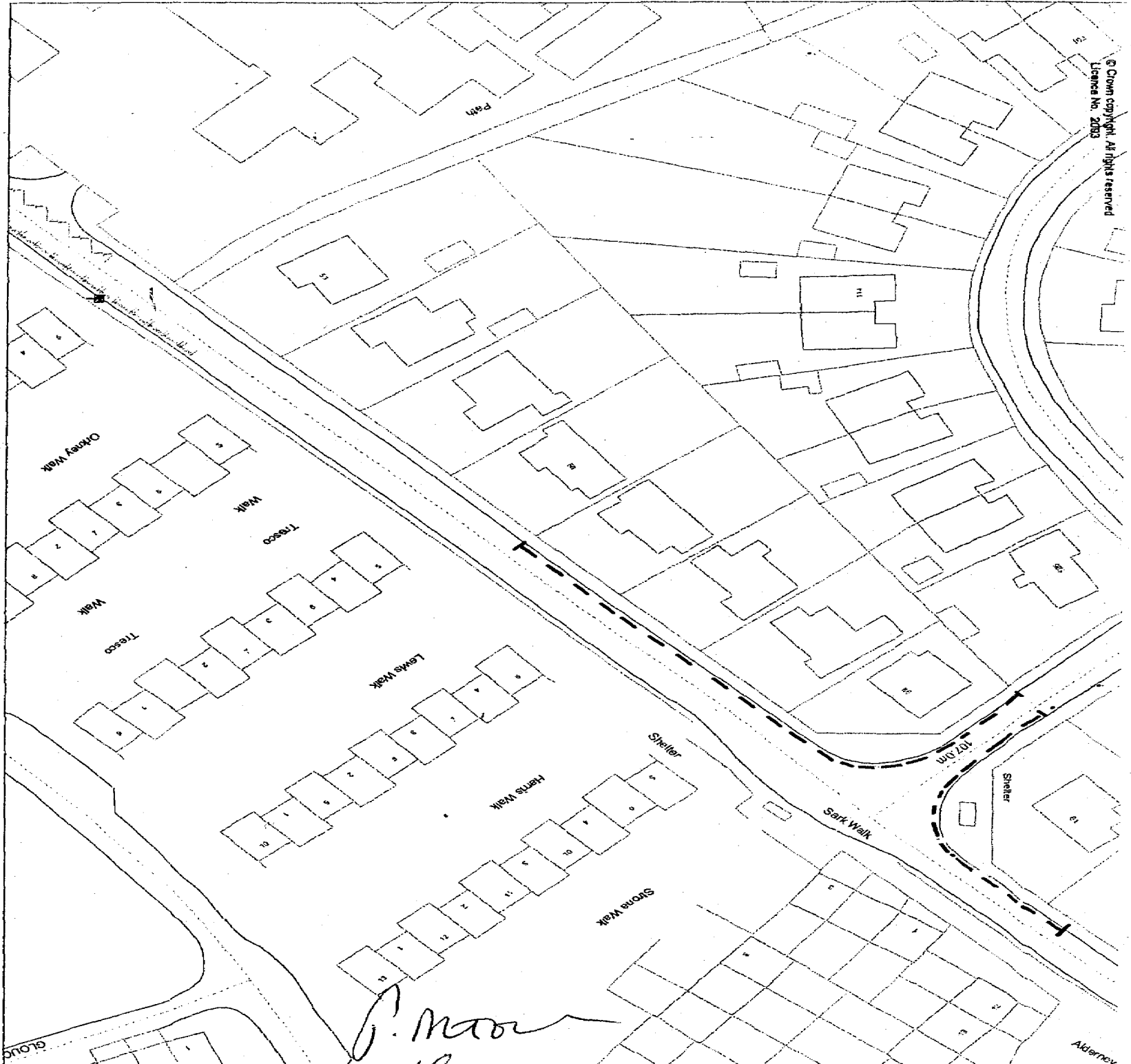


Authorised Signatory

[Handwritten Signature]
 (Legal and Democratic Services)



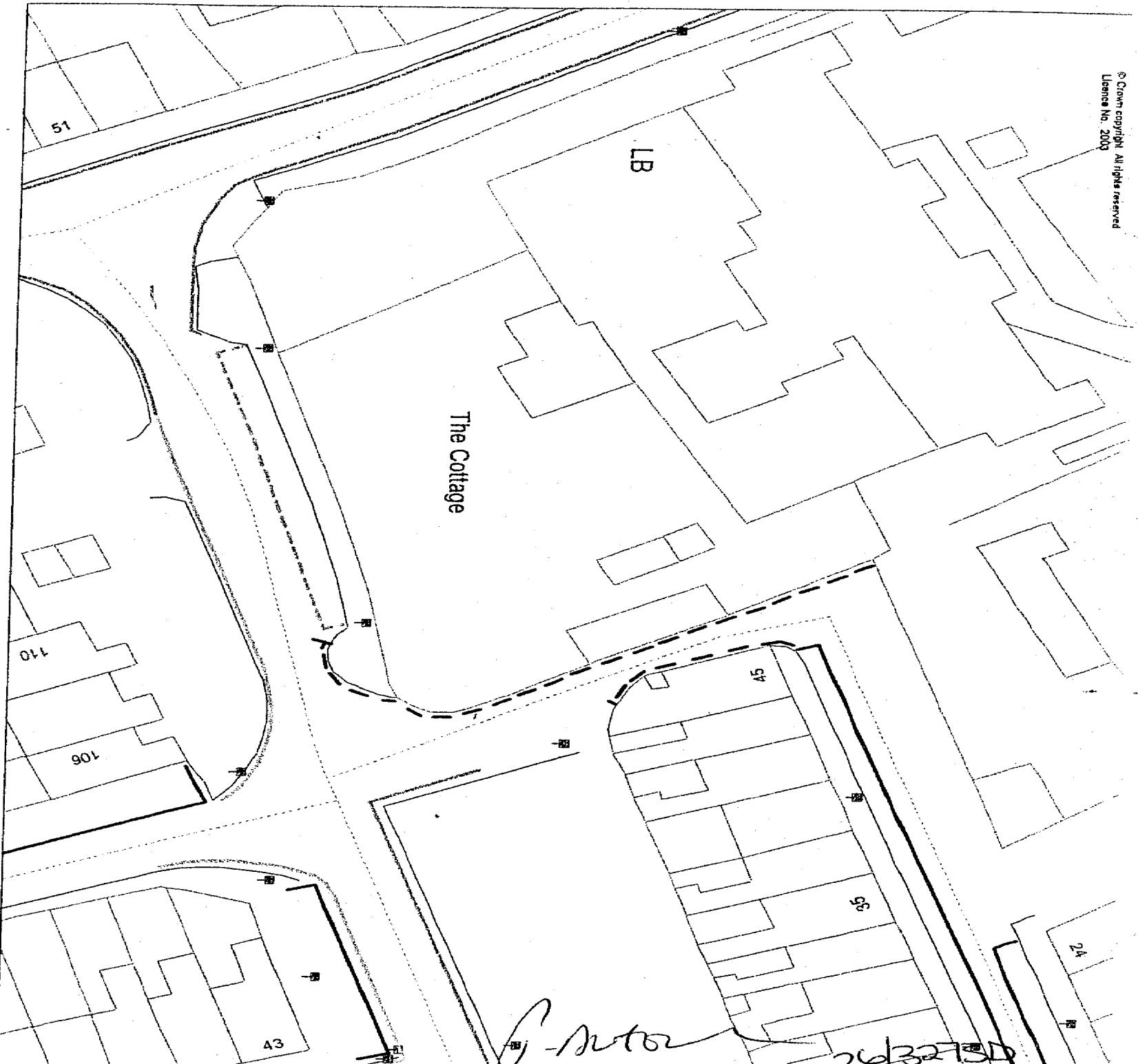
Hutton Lane/Thames Avenue, Guisborough - Proposed NVAAT





Belmangate, Guisborough - Proposed NWAAT

Patricia Jewell



Un-named Road (off Walkers Row) - Proposed NWAAT



Rear of Wilson Street, Guisborough - Proposed NWAAT

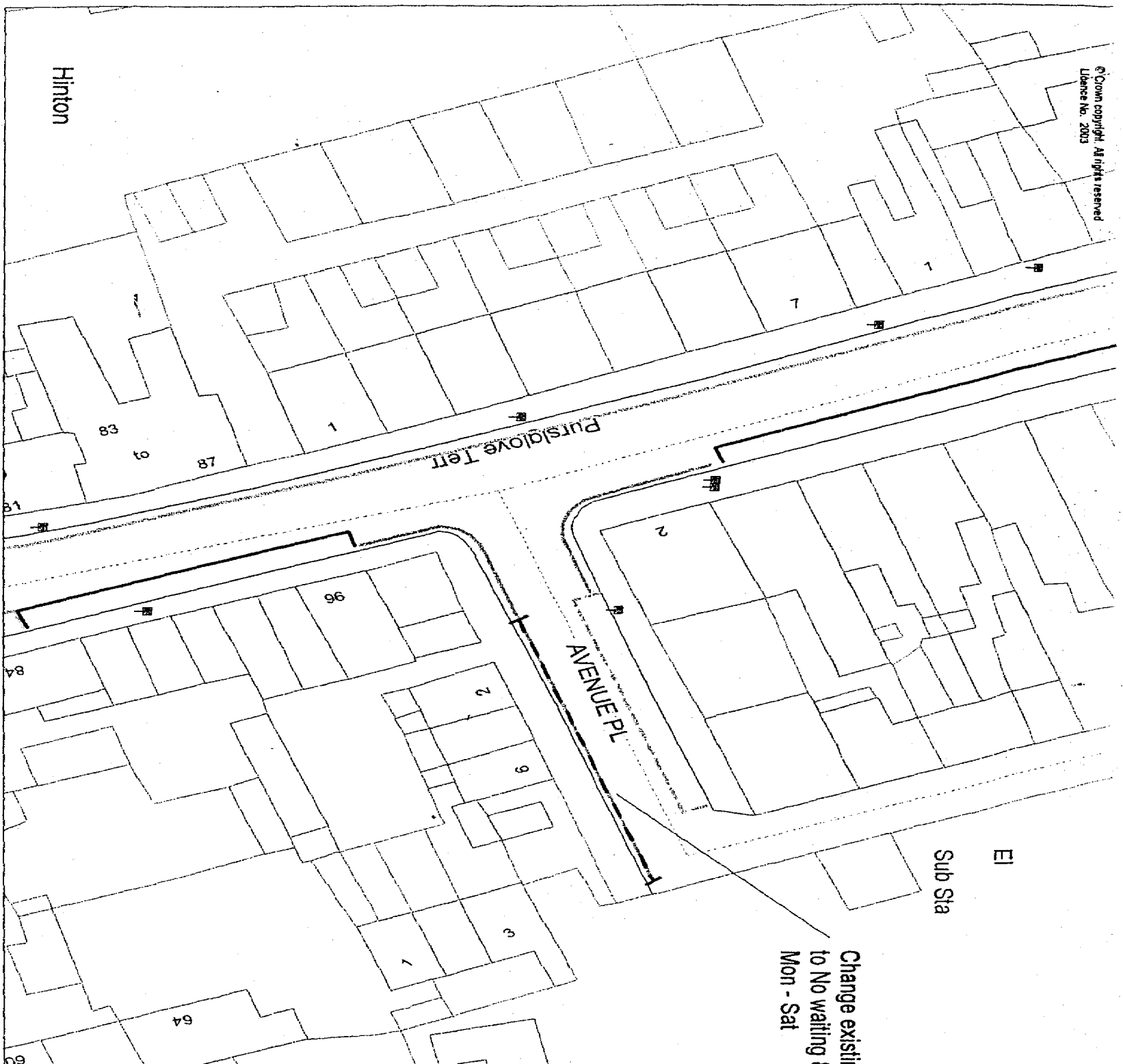


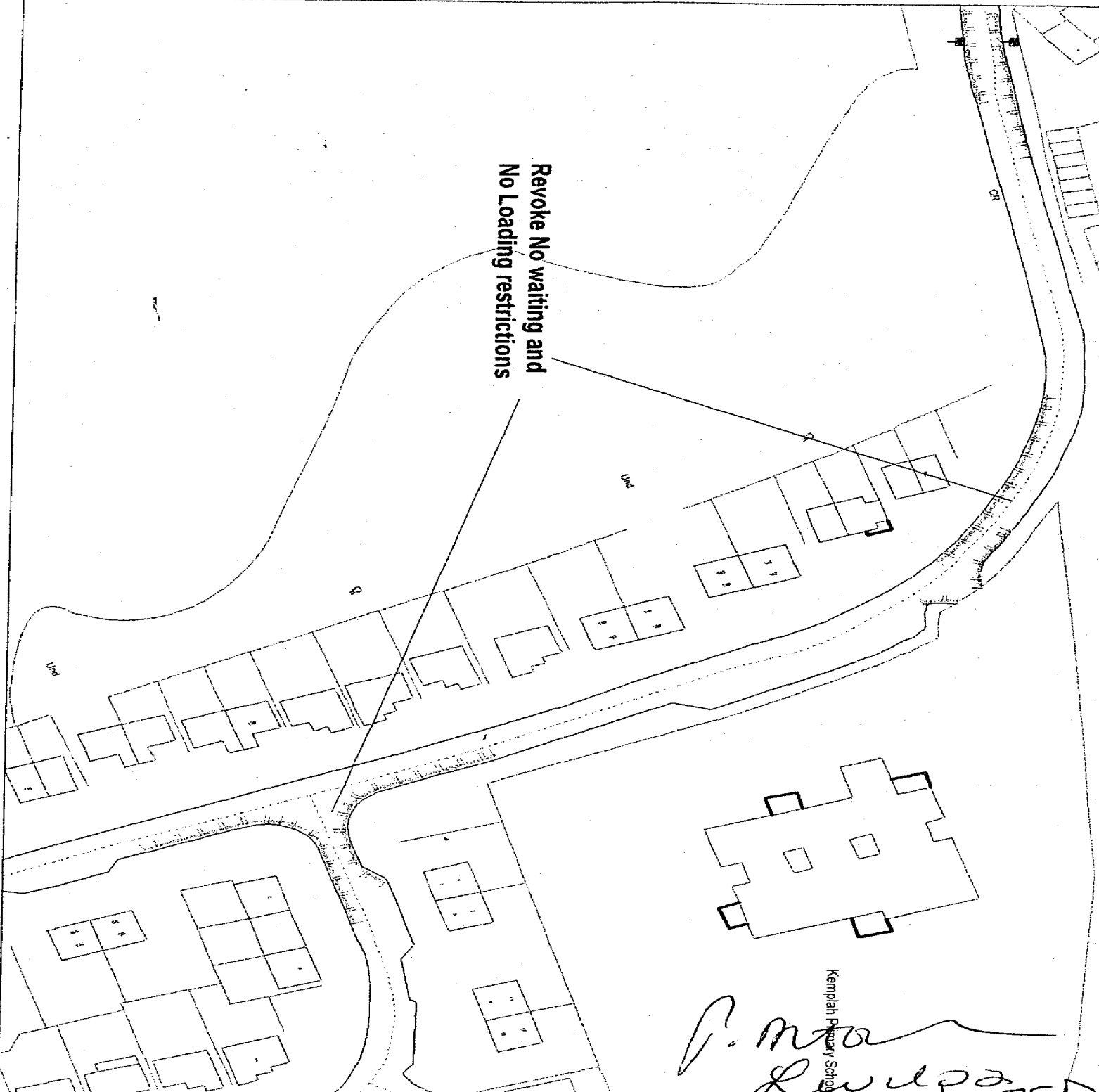
Market Place, Guisborough - Amendment of Existing NWAAT restrictions descriptions





Avenue Place Guis - Proposed No Waiting 8am to 6pm





**Revoke No waiting and
No Loading restrictions**

Kempthorn Primary School

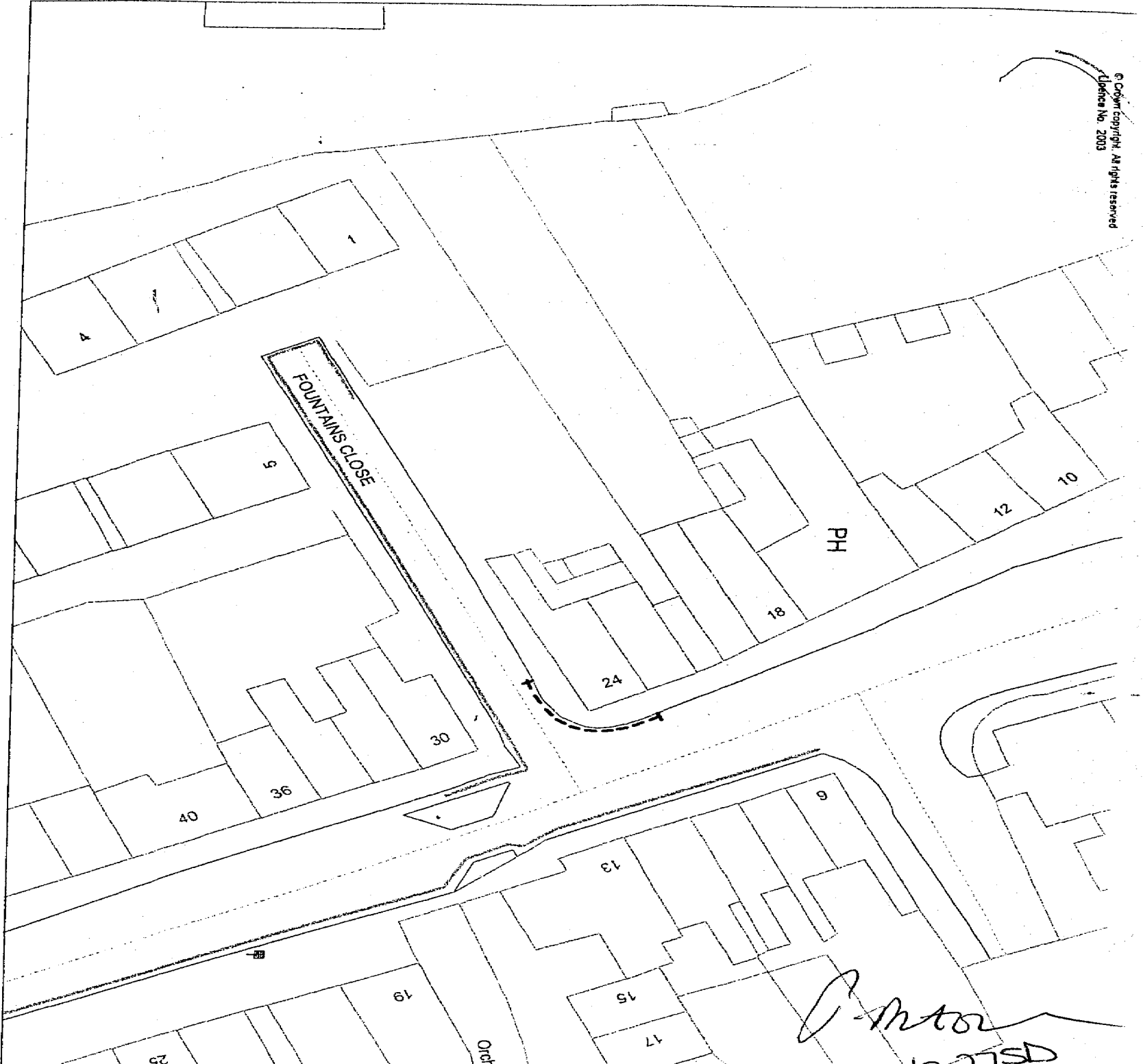
P. M. ...
Lowland

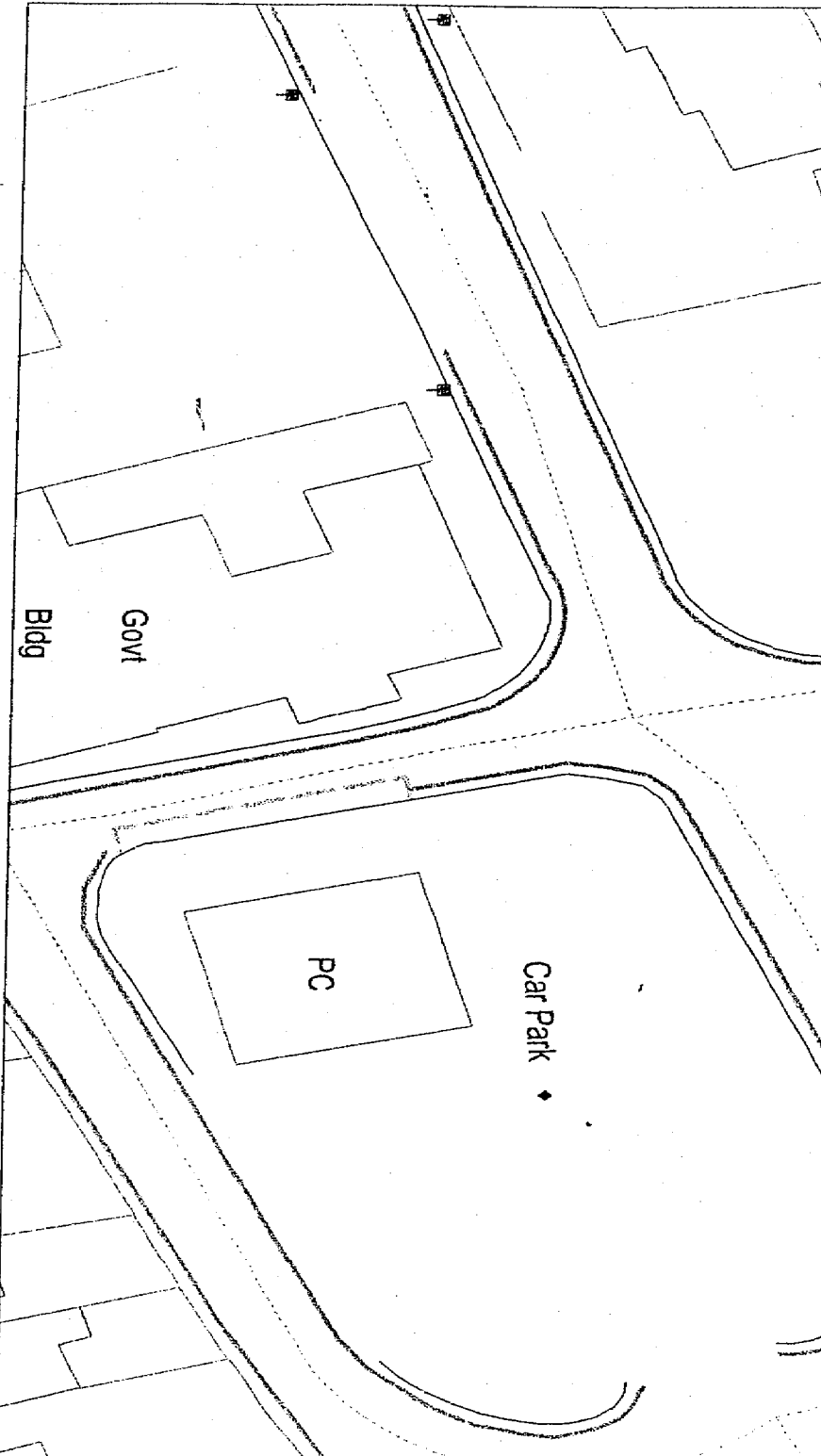
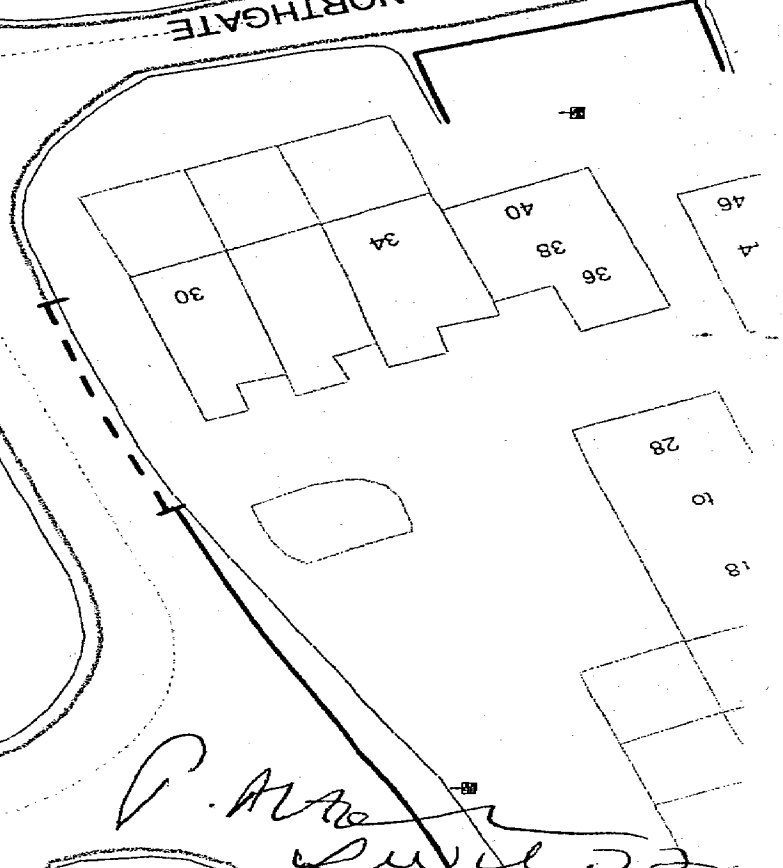
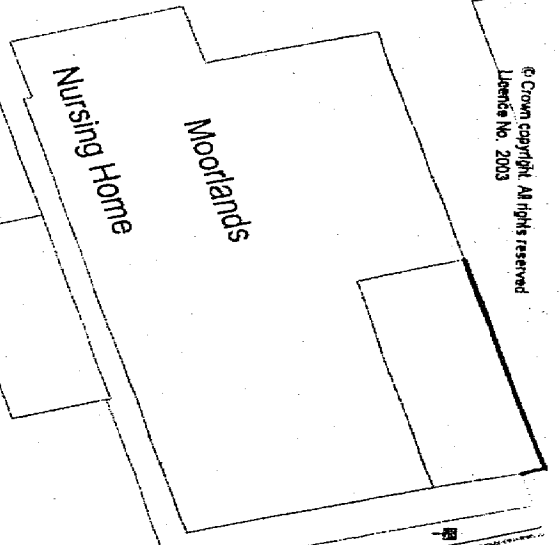


**Aldenham Road/Roxby Avenue
Revocation of Waiting Restrictions**



Fountains Close/Balmangate, Guis - Proposed NWAAT





Patten Lane, Guis - Proposed NWAAT