

NORTHUMBERLAND COUNTY COUNCIL  
TRAFFIC REGULATION ORDER

(Ref: TRO\_011\_92)

Northumberland County Council

South East Northumberland Area (Waiting & Loading)

Composite Order 2011

Amendment No 92 Order 2020

---

Made: 29<sup>th</sup> September 2020

Coming into Force: 12<sup>th</sup> October 2020

---

Northumberland County Council (hereinafter referred to as "the Council") in exercise of their powers under Sections 1, 2 and 4 and Paragraphs 20 and 27 of Schedule 9 of the Road Traffic Regulation Act 1984 ("the Act of 1984"), and after consulting with the Chief Officer of Police in accordance with Part III of Schedule 9 to the Act of 1984 and of all other enabling powers hereby make the following Order:-

**1. Commencement and Citation**

This Order shall come into operation on the 12<sup>th</sup> October 2020 and may be cited as "Northumberland County Council South East Northumberland Area (Waiting and Loading) Composite Order 2011 - Amendment No 92 Order 2020".

**2. In the Order:-**

"Order" means "Northumberland County Council South East Northumberland Area (Waiting and Loading) Composite Order 2011".

"Amendment Order" means "Northumberland County Council South East Northumberland Area (Waiting and Loading) Composite Order 2011- Amendment No 92 Order 2020".

The Interpretation Act 1978 shall apply to this Order as it applies to an Act of Parliament.

**3. Provisions**

The following provisions set out below and in The Schedule to this Amendment Order shall be additions to, deletions from, or substitutions in the restrictions in the Order:

(A) Additions

to Schedule 1 – Waiting

(Referenced in this Amendment Order as: First Schedule - ADDITIONS)

(B) Deletions

None

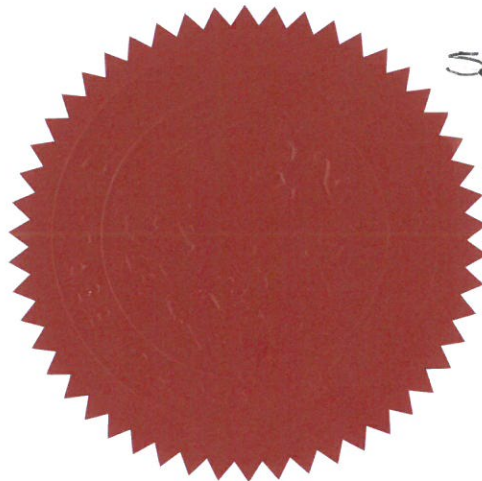
(C) Substitutions

None

THE COMMON SEAL OF NORTHUMBERLAND COUNTY COUNCIL was hereunto affixed  
this 29<sup>th</sup> day of September 2020 in the presence of:-

*M. Wulcock*

Duly Authorised Officer



*Seal No. -*

*22314*

## FIRST SCHEDULE

ADDITIONS – Northumberland County Council South East Northumberland Area (Waiting and Loading) Composite Order 2011 - Amendment No 92 Order 2020 - TRO\_011\_92

### Schedule 1 – Waiting

Ref No	Street	Town	Side	Description	Proscribed Hours
011_92_7455	HORTON DRIVE	CRAMLINGTON	West	At its junction with Underwood Grove to a point 16 metres south of its junction with Underwood Grove	A
011_92_7456	UNDERWOOD GROVE	CRAMLINGTON	South	At its junction with Horton Drive to a point 36 metres north west of its junction with Horton Drive	A
011_92_7458	UNDERWOOD GROVE	CRAMLINGTON	North	At its junction with Horton Drive to a point 33 metres north west of its junction with Horton Drive	A
011_92_7459	HORTON DRIVE	CRAMLINGTON	West	At its junction with Underwood Grove to a point 16 metres north of its junction with Underwood Grove	A
011_92_7460	HORTON DRIVE	CRAMLINGTON	East	At its junction with Ilford Avenue to a point 20 metres south of its junction with Ilford Avenue	A
011_92_7461	ILFORD AVENUE	CRAMLINGTON	South	At its junction with Horton Drive to a point 11 metres east of its junction with Horton Drive	A
011_92_7499	ILFORD AVENUE	CRAMLINGTON	North	At its junction with Horton Drive to a point 34 metres east of its junction with Horton Drive	A
011_92_7490	HORTON DRIVE	CRAMLINGTON	East	At its junction with Ilford Avenue to a point 14 metres north of its junction with Ilford Avenue	A
011_92_7491	HORTON DRIVE	CRAMLINGTON	South East	At its junction with Pendleton Drive to a point 15 metres south west of its junction with Pendleton Drive	A
011_92_7492	PENDLETON DRIVE	CRAMLINGTON	South West	At its junction with Horton Drive to a point 8 metres south east of its junction with Horton Drive	A
011_92_7495	PENDLETON DRIVE	CRAMLINGTON	South West	At a point 8 metres south east of its junction with Horton Drive to its junction with Porlock Court	D5
011_92_7493	PENDLETON DRIVE	CRAMLINGTON	North East	At its junction with Horton Drive to a point 7 metres south east of its junction with Horton Drive	A
011_92_7494	HORTON DRIVE	CRAMLINGTON	South East	At its junction with Pendleton Drive to a point 10 metres north east of its junction with Pendleton Drive	A

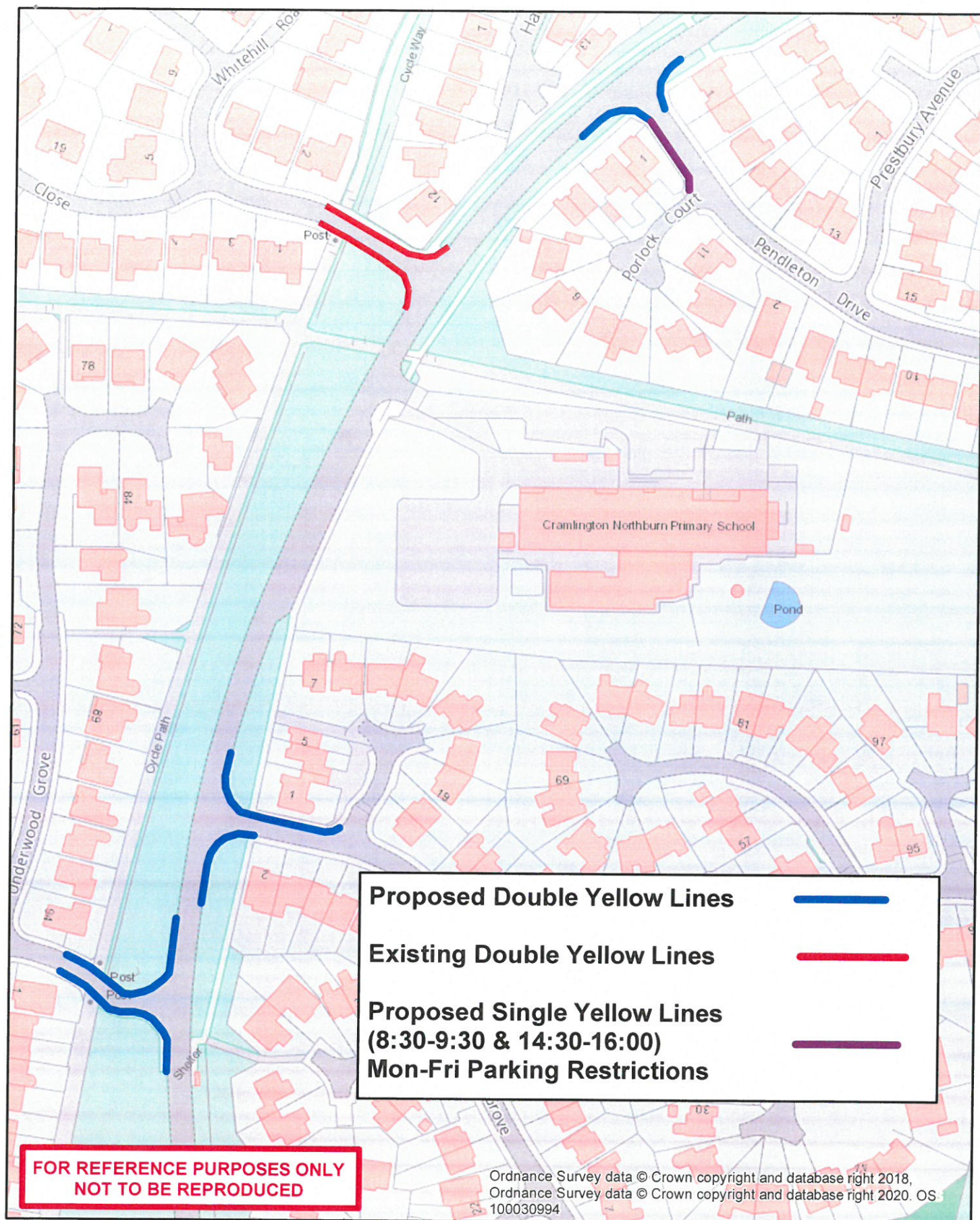
**ROAD TRAFFIC REGULATION ACT 1984  
NORTHUMBERLAND COUNTY COUNCIL**

**SOUTH EAST NORTHUMBERLAND AREA (WAITING AND LOADING)  
COMPOSITE ORDER 2011 AMENDMENT NO 92 ORDER 2020**

**STATEMENT OF THE COUNCIL'S REASONS FOR  
MAKING THE ORDER**

The Order is necessary in order to reduce congestion and improve road safety within the Northburn Primary School/Horton Drive Area of Cramlington Town Northumberland.





**Northumberland**  
Northumberland County Council

### Network Management Information System

Title: Proposed Parking Restrictions  
Horton Drive Junctions  
Cramlington

Northumberland County Council  
County Hall  
Morpeth  
Northumberland NE61 2EF  
Tel: 01670 533000

This map is reproduced from Ordnance Survey material with the permission of Ordnance Survey on behalf of the Controller of Her Majesty's Stationary Office Crown Copyright. Unauthorised reproduction infringes Crown Copyright and may lead to prosecution or civil proceedings. License no. 100049048 (2009).

Drn:  
SH

Date:  
May 2020

Scale:  
NTS