

NORTHUMBERLAND COUNTY COUNCIL

TRAFFIC REGULATION ORDER

(Ref: TRO\_003\_25)

---

Northumberland County Council

North Northumberland (Central) Area (Waiting and Loading) Composite Order 2011  
Amendment No 25 Order 2018

Made: 14<sup>th</sup> May 2018

Coming into Force: 29<sup>th</sup> May 2018

---

Northumberland County Council (hereinafter referred to as "the Council") in exercise of their powers under Sections 1, 2 and 4 and Paragraphs 20 and 27 of Schedule 9 of the Road Traffic Regulation Act 1984 ("the Act of 1984"), and after consulting with the Chief Officer of Police in accordance with Part III of Schedule 9 to the Act of 1984 and of all other enabling powers hereby make the following Order:-

**1. Commencement and Citation**

This Order shall come into operation on the 29<sup>th</sup> May 2018 and may be cited as "NCC North Northumberland (Central) Area (Waiting and Loading) Composite Order 2011 Amendment No 25 Order 2018".

**2. In the Order:-**

"Order" means "NCC North Northumberland (Central) Area (Waiting and Loading) Composite Order 2011".

"Amendment Order" means "North Northumberland (Central) Area (Waiting and Loading) Composite Order 2011 Amendment No 25 Order 2018".

The Interpretation Act 1978 shall apply to this Order as it applies to an Act of Parliament.

### 3. Provisions

The following provisions set out below and in The Schedule to this Amendment Order shall be additions to, deletions from, or substitutions in the restrictions in the Order:

#### (A) Additions

to Schedule 1 – Waiting

(Referenced in this Amendment Order as: The Schedule - ADDITIONS)

#### (B) Deletions

to Schedule 1 – Waiting

(Referenced in this Amendment Order as: The Schedule - DELETIONS)

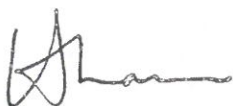
#### (C) Substitutions

None

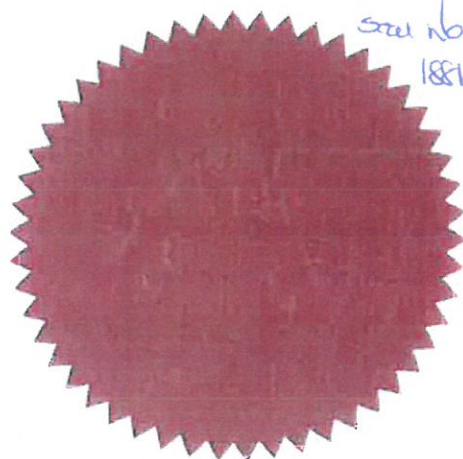
---

GIVEN under the Common Seal of the County Council of Northumberland this 14<sup>th</sup> day of May 2018.

THE COMMON SEAL OF THE COUNTY COUNCIL OF NORTHUMBERLAND was hereunto affixed in the presence of:-



Duly Authorised Officer



## THE SCHEDULE

### ADDITIONS – NCC North Northumberland (Central) Area (Waiting and Loading) Composite Order 2011 Amendment Number 25 Order 2018 - TRO\_003\_25

#### Schedule 1 – Waiting

SCHEDULE NO	NAME	TOWN	SIDE	DESCRIPTION	PROSCRIBED HOURS
003_25_000_5738	B1338 HIPSBURN TO ALNMOUTH	ALNMOUTH	North	At its junction with Shepherds Hill to a point 32 metres west of its junction with Shepherds Hill	A
003_25_000_5739	B1338 HIPSBURN TO ALNMOUTH	ALNMOUTH	South	At its junction with Alnwood to a point 59 metres west of its junction with Alnwood	A
003_25_000_5740	B1338 HIPSBURN TO ALNMOUTH	ALNMOUTH	North East	At its junction with Foxton Road to a point 32 metres north west of its junction with Foxton Road	A
003_25_000_5741	FOXTON ROAD	ALNMOUTH	West	At its junction with the B1338 Hipsburn to Alnmouth to a point 31 metres north of its junction with B1338 Hipsburn to Alnmouth	A
003_25_000_5743	WELLFIELD GARDENS	ALNMOUTH	South	At its junction with Northumberland Street to a point 9 metres west of its junction with Northumberland Street	A
003_25_000_5744	NORTHUMBERLAND STREET	ALNMOUTH	West	At its junction with Wellfield Gardens to a point 36 metres south of its junction with Wellfield Gardens	A
003_25_000_5745	NORTHUMBERLAND STREET	ALNMOUTH	East	At a point 45 metres north of its junction with The Wynd to a point 70 metres north of The Wynd	A
003_25_000_5746	FOXTON ROAD	ALNMOUTH	East	At a point 70 metres north of The Wynd to its junction with Lint Gardens	A
003_25_000_5748	LINT GARDENS	ALNMOUTH	North	At its junction with Foxton Road to a point 15 metres east of its junction with Foxton Road	A
003_25_000_5749	LINT GARDENS	ALNMOUTH	South	At its junction with Foxton Road to a point 15 metres east of its junction with Foxton Road	A
003_25_000_5750	NORTHUMBERLAND STREET	ALNMOUTH	West	At a point 44 metres south of its junction with Wellfield Gardens to a point 73 metres south of its junction with Wellfield Gardens	A
003_25_000_5751	NORTHUMBERLAND STREET	ALNMOUTH	East	At its junction with The Wynd to a point 35 metres north of its junction with The Wynd	A
003_25_000_5752	THE WYND	ALNMOUTH	North	At its junction with Northumberland Street to a point 37 metres east of its junction with Northumberland Street	A
003_25_000_5753	U3026 MARINE ROAD TO GOLF COURSE	ALNMOUTH	North	At its junction with The Wynd to a point 20 metres north east of its junction with The Wynd	A
003_25_000_5754	THE WYND	ALNMOUTH	South	At its junction with Northumberland Street to a point 15 metres east of its junction with Northumberland Street	A
003_25_000_5755	THE WYND	ALNMOUTH	South	At a point 25 metres east of its junction with Northumberland Street to its junction with Marine Road	A
003_25_000_5756	U3026 MARINE ROAD TO GOLF COURSE	ALNMOUTH	South East	At its junction with Marine Road to a point 24 metres north east of its junction with Marine Road	A
003_25_000_5756	MARINE ROAD	ALNMOUTH	East	At its junction with U3026 Marine Road to Golf Course to a point 94 metres south of its junction with U3026 Marine Road to Golf Course	A
003_25_000_5758	MARINE ROAD	ALNMOUTH	West	At its junction with The Wynd to a point 116 metres south of its junction with The Wynd	A

003_25_000_5760	MARINE ROAD	ALNMOUTH	West	From a point 120 metres south of its junction with The Wynd to a point 127 metres south of its junction with The Wynd	A
003_25_000_5762	MARINE ROAD	ALNMOUTH	West	From a point 187 metres south of its junction with The Wynd to a point 189 metres south of its junction with The Wynd	A
003_25_000_5764	MARINE ROAD	ALNMOUTH	West	From a point 198 metres south of its junction with The Wynd to a point 202 metres south of its junction with The Wynd	A
003_25_000_5765	MARINE ROAD	ALNMOUTH	West	From a point 206 metres south of its junction with The Wynd to a point 209 metres south of its junction with The Wynd	A
003_25_000_5767	MARINE ROAD	ALNMOUTH	West	From a point 233 metres south of its junction with The Wynd to a point 242 metres south of its junction with The Wynd	A
003_25_000_5771	MARINE ROAD	ALNMOUTH	West	At a point 46 metres south of its junction with Peases Lane to a point 67 metres south of its junction with Peases Lane	A
003_25_000_5772	MARINE ROAD	ALNMOUTH	East	At a point 304 metres south of its junction with U3026 Marine Road to Golf Course to a point 325 metres south of its junction with U3026 Marine Road to Golf Course	A
003_25_000_5773	MARINE ROAD	ALNMOUTH	North	At a point 121 metres south west of its junction with Peases Lane to its junction with Northumberland Street	A
003_25_000_5774	MARINE ROAD	ALNMOUTH	North	At a point 111 metres south west of its junction with Peases Lane to a point 116 metres south west of its junction with Peases Lane	A
003_25_000_5776	MARINE ROAD	ALNMOUTH	North West	At a point 100 metres south west of its junction with Peases Lane to a point 103 metres south west of its junction with Peases Lane	A
003_25_000_5777	MARINE ROAD	ALNMOUTH	North West	At a point 74 metres south west of its junction with Peases Lane to a point 94 metres south west of its junction with Peases Lane	A
003_25_000_5779	RIVERSIDE ROAD	ALNMOUTH	East	At its junction with Marine Road to a point 13 metres south west of its junction with Marine Road	A
003_25_000_5781	NORTHUMBERLAND STREET	ALNMOUTH	West	At its junction with Argyle Street to its junction with Riverside Road	A
003_25_000_5783	RIVERSIDE ROAD	ALNMOUTH	North	At a point 100 metres south west of its junction with Northumberland Street to its junction with Argyle Street	A
003_25_000_5785	RIVERSIDE ROAD	ALNMOUTH	South	At a point 99 metres south west of its junction with Marine Road to a point 127 metres south west of its junction with Marine Road	A
003_25_000_5790	ARGYLE STREET	ALNMOUTH	West	At its junction with Riverside Road to a point 12 metres north of its junction with Riverside Road	A
003_25_000_5791	ARGYLE STREET	ALNMOUTH	East	At its junction with Riverside Road to a point 29 metres north of its junction with Riverside Road	A
003_25_000_5792	RIVERSIDE ROAD	ALNMOUTH	North East	At its junction with Argyle Street to a point 42 metres north west of its junction with Argyle Street	A
003_25_000_5793	RIVERSIDE ROAD	ALNMOUTH	North East	At a point 47 metres north west of its junction with Argyle Street to a point 58 metres north west of its junction with Argyle Street	A
003_25_000_5796	RIVERSIDE ROAD	ALNMOUTH	North East	At a point 61 metres north west of its junction with Argyle Street to a point 63 metres north west of its junction with Argyle Street	A

003_25_000_5797	RIVERSIDE ROAD	ALNMOUTH	North East	At a point 67 metres north west of its junction with Argyle Street to a point 84 metres north west of its junction with Argyle Street	A
003_25_000_5798	RIVERSIDE ROAD	ALNMOUTH	North East	At a point 88 metres north west of its junction with Argyle Street to a point 90 metres north west of its junction with Argyle Street	A
003_25_000_5799	RIVERSIDE ROAD	ALNMOUTH	North East	At a point 93 metres north west of its junction with Argyle Street to a point 97 metres north west of its junction with Argyle Street	A
003_25_000_5801	RIVERSIDE ROAD	ALNMOUTH	West	At a point 249 metres south west then north west of its junction with Marine Road to a point 273 metres south west then north west of its junction with Marine Road	A
003_25_000_5802	RIVERSIDE ROAD	ALNMOUTH	East	At a point 125 metres north west of its junction with Argyle Street to a point 170 metres north west of its junction with Argyle Street	A
003_25_000_5803	RIVERSIDE ROAD	ALNMOUTH	East	At a point 179 metres north west of its junction with Argyle Street to a point 204 metres north west of its junction with Argyle Street	A
003_25_000_5804	RIVERSIDE ROAD	ALNMOUTH	West	At a point 356 metres south west then north West of its junction with Marine Road to a point 370 metres south west then north West of its junction with Marine Road	A
003_25_000_5805	ARGYLE STREET	ALNMOUTH	West	At a point 38 metres north of its junction with Riverside Road to a point 81 metres north of its junction with Riverside Road	A
003_25_000_5806	ARGYLE STREET	ALNMOUTH	East	At a point 64 metres north of its junction with Riverside Road to a point 69 metres north of its junction with Riverside Road	A
003_25_000_5807	ARGYLE STREET	ALNMOUTH	South	At a point 92 metres west of its junction with Northumberland Street to a point 97 metres west of its junction with Northumberland Street	A
003_25_000_5808	ARGYLE STREET	ALNMOUTH	North	At a point 95 metres west of its junction with Northumberland Street to a point 100 metres west of its junction with Northumberland Street	A
003_25_000_5809	ARGYLE STREET	ALNMOUTH	East	At a point 51 metres north of its junction with Riverside Road to a point 54 metres north of its junction with Riverside Road	A
003_25_000_5810	ARGYLE STREET	ALNMOUTH	East	At a point 45 metres north of its junction with Riverside Road to a point 47 metres north of its junction with Riverside Road	A
003_25_000_5811	ARGYLE STREET	ALNMOUTH	South	At its junction with Northumberland Street to a point 8 metres west of its junction with Northumberland Street	A
003_25_000_5812	ARGYLE STREET	ALNMOUTH	North	At its junction with Northumberland Street to a point 8 metres west of its junction with Northumberland Street	A
003_25_000_5813	ARGYLE STREET	ALNMOUTH	South	At a point 17 metres west of its junction with Northumberland Street to a point 22 metres west of its junction with Northumberland Street	A
003_25_000_5814	ARGYLE STREET	ALNMOUTH	North	At a point 25 metres west of its junction with Northumberland Street to a point 32 metres west of its junction with Northumberland Street	A
003_25_000_5815	ARGYLE STREET	ALNMOUTH	South	At a point 27 metres west of its junction with Northumberland Street to a point 35 metres west of its junction with Northumberland Street	A



003_25_000_5816	NORTHUMBERLAND STREET	ALNMOUTH	East	At its junction with Marine Road to a point 18 metres north of its junction with Marine Road	A
003_25_000_5817	NORTHUMBERLAND STREET	ALNMOUTH	East	At a point 29 metres north of its junction with Marine Road to a point 39 metres north of its junction with Marine Road	A
003_25_000_5818	NORTHUMBERLAND STREET	ALNMOUTH	East	At a point 44 metres north of its junction with Marine Road to a point 48 metres north of its junction with Marine Road	A
003_25_000_5819	NORTHUMBERLAND STREET	ALNMOUTH	East	At a point 73 metres north of its junction with Marine Road to a point 77 metres north of its junction with Marine Road	A
003_25_000_5820	NORTHUMBERLAND STREET	ALNMOUTH	East	At a point 80 metres north of its junction with Marine Road to a point 102 metres north of its junction with Marine Road	A
003_25_000_5821	NORTHUMBERLAND STREET	ALNMOUTH	West	At its junction with Argyle Street to a point 6 metres north of its junction with Argyle Street	A
003_25_000_5826	PEASES LANE	ALNMOUTH	South	At its junction with Northumberland Street to a point 4 metres east of its junction with Northumberland Street	A
003_25_000_5827	PEASES LANE	ALNMOUTH	North	At its junction with Northumberland Street to a point 4 metres east of its junction with Northumberland Street	A
003_25_000_5828	NORTHUMBERLAND STREET	ALNMOUTH	East	At its junction with Peases Lane to a point 12 metres north of its junction with Peases Lane	A
003_25_000_5829	NORTHUMBERLAND STREET	ALNMOUTH	East	At a point 15 metres north of its junction with Peases Lane to a point 64 metres north of its junction with Peases Lane	A
003_25_000_5830	NORTHUMBERLAND STREET	ALNMOUTH	East	At a point 67 metres north of its junction with Peases Lane to its junction with Prospect Place	A
003_25_000_5833	NORTHUMBERLAND STREET	ALNMOUTH	East	At a point 43 metres north of its junction with Prospect Place to its junction with Crows Nest Lane	A
003_25_000_5834	NORTHUMBERLAND STREET	ALNMOUTH	East	At its junction with Crows Nest Lane to a point 17 metres north of its junction with Crows Nest Lane	A
003_25_000_5835	NORTHUMBERLAND STREET	ALNMOUTH	East	At a point 22 metres north of its junction with Crows Nest Lane to a point 25 metres north of its junction with Crows Nest Lane	A
003_25_000_5837	NORTHUMBERLAND STREET	ALNMOUTH	East	At a point 73 metres north of its junction with Crows Nest Lane to a point 79 metres north of its junction with Crows Nest Lane	A
003_25_000_5838	NORTHUMBERLAND STREET	ALNMOUTH	East	At a point 85 metres north of its junction with Crows Nest Lane to its junction with the Wynd	A
003_25_000_5847	NORTHUMBERLAND STREET	ALNMOUTH	West	At a point 28 metres north of its junction with River Bank Road to its junction with Grosvenor Terrace	A
003_25_000_5848	GROSVENOR TERRACE	ALNMOUTH	West	At its junction with Northumberland Street to a point 16 metres west of its junction with Northumberland Street	A
003_25_000_5849	NORTHUMBERLAND STREET	ALNMOUTH	West	At its junction with Grosvenor Terrace to a point 7 metres north of its junction with Grosvenor Terrace	A
003_25_000_5850	NORTHUMBERLAND STREET	ALNMOUTH	West	At a point 13 metres north of its junction with Grosvenor Terrace to a point 17 metres north of its junction with Grosvenor Terrace	A
003_25_000_5851	NORTHUMBERLAND STREET	ALNMOUTH	West	At a point 40 metres north of its junction with Grosvenor Terrace to a point 42 metres north of its junction with Grosvenor Terrace	A
003_25_000_5852	NORTHUMBERLAND STREET	ALNMOUTH	West	At a point 46 metres north of its junction with Grosvenor Terrace to a point 49 metres north of its junction with Grosvenor	A

				Terrace	
003_25_000_5853	NORTHUMBERLAND STREET	ALNMOUTH	West	At a point 82 metres north of its junction with Grosvenor Terrace to a point 86 metres north of its junction with Grosvenor Terrace	A
003_25_000_5858	ARGYLE STREET	ALNMOUTH	West	At a point 27 metres north of its junction with Riverside Road to a point 31 metres north of its junction with Riverside Road	A
003_25_000_5859	B1338 HIPSBURN TO ALNMOUTH	ALNMOUTH	South	At its junction with Alnwood to a point 35 metres east of its junction with Alnwood	A
003_25_000_5861	RIVERSIDE ROAD	ALNMOUTH	East	At a point 210 metres north west of its junction with Argyle Street to a point 213 metres north west of its junction with Argyle Street	A
003_25_000_5862	RIVERSIDE ROAD	ALNMOUTH	East	At a point 217 metres north west of its junction with Argyle Street to its junction with Garden Terrace	A
003_25_000_5863	THE WYND	ALNMOUTH	North	At a point 41 metres east of its junction with Northumberland Street to its junction with Marine Road	A
003_25_000_6403	RIVERSIDE ROAD	ALNMOUTH	North East	At a point 102 metres north west of its junction with Argyle Street to a point 106 metres north west of its junction with Argyle Street	A
003_25_000_6404	RIVERSIDE ROAD	ALNMOUTH	North East	At a point 111 metres north west of its junction with Argyle Street to a point 122 metres north west of its junction with Argyle Street	A
003_25_000_6405	RIVERSIDE ROAD	ALNMOUTH	West	At a point 184 metres south west then north west of its junction with Marine Road to a point 202 metres south west then north west of its junction with Marine Road	A
003_25_000_6406	RIVERSIDE ROAD	ALNMOUTH	West	At a point 208 metres south west then north west of its junction with Marine Road to a point 250 metres south west then north west of its junction with Marine Road	A
003_25_000_6407	RIVERSIDE ROAD	ALNMOUTH	South	At a point 58 metres south west of its junction with Marine Road to a point 69 metres south west of its junction with Marine Road	A
003_25_000_6408	RIVERSIDE ROAD	ALNMOUTH	North West	At its junction with Northumberland Street to a point 23 metres south west of its junction with Northumberland Street	A
003_25_000_6409	MARINE ROAD	ALNMOUTH	South	At a point 385 metres south of its junction with U3024 Marine Road to Golf Club to its junction with Riverside Road	A
003_25_000_6410	MARINE ROAD	ALNMOUTH	East	At a point 136 metres south of its junction with U3026 Marine Road to Golf Course to a point 287 metres south of its junction with U3026 Marine Road to Golf Course	A
003_25_000_6411	MARINE ROAD	ALNMOUTH	West	At its junction with Peases Lane to a point 6 metres south of its junction with Peases Lane	A
003_25_000_6412	NORTHUMBERLAND STREET	ALNMOUTH	West	At a point 23 metres north of its junction with Garden Terrace to a point 28 metres north of its junction with Garden Terrace	A
003_25_000_6413	NORTHUMBERLAND STREET	ALNMOUTH	West	At a point 28 metres north of its junction with River Bank Road to its junction with Grosvenor Terrace	A
003_25_000_6416	NORTHUMBERLAND STREET	ALNMOUTH	East	At its junction with Prospect Place to a point 38 metres north of its junction with Prospect Place	A
003_25_000_6417	B1338 HIPSBURN TO ALNMOUTH	ALNMOUTH	South West	At its junction with Wellfield Gardens to a point 42 metres north west of its junction with Wellfield Gardens	A

003_25_000_6418	FOXTON ROAD	ALNMOUTH	West	At a point 127 metres north of its junction with B1338 Hipsburn to Alnmouth to a point 136 metres north of its junction with B1338 Hipsburn to Alnmouth	A
003_25_000_6419	FOXTON ROAD	ALNMOUTH	West	At a point 147 metres north of its junction with B1338 Hipsburn to Alnmouth to a point 296 metres north of its junction with B1338 Hipsburn to Alnmouth	A
003_25_000_6420	FOXTON ROAD	ALNMOUTH	East	At its junction with Lint Gardens to a point 179 metres north of its junction with Lint Gardens	A
003_25_000_6481	ARGYLE STREET	ALNMOUTH	East	At a point 88 metres north of its junction with Riverside Road to a point 94 metres north of its junction with Riverside Road	A

**DELETIONS – NCC North Northumberland (Central) Area (Waiting and Loading) Composite Order 2011 Amendment Number 25 Order 2018 - TRO\_003\_25**

**Schedule 1 – Waiting**

SCHEDULE NO	NAME	TOWN	SIDE	DESCRIPTION	PROSCRIBED HOURS
004_003_001	NORTHUMBERLAND STREET	ALNMOUTH	West	At its junction with Northumberland Mews to its junction with Garden Terrace	A
003_01_129_1	ARGYLE STREET	ALNMOUTH	South	At its junction with Victoria Place to a point 8 metres west of its junction with Victoria Place	A
003_002_001	MARINE ROAD	ALNMOUTH	East	A point 13 metres south of its junction with Peases Lane to its junction with Riverside Road	A
003_005_002	RIVERSIDE ROAD	ALNMOUTH	North West	At its junction with Victoria Place to a point 35 metres south west of its junction with Victoria Place	A
003_003_002	NORTHUMBERLAND STREET	ALNMOUTH	East	At its junction with The Wynd to a point 7 metres North of its junction with The Wynd	A
003_006_001	THE WYND	ALNMOUTH	North	At its junction with Northumberland Street to its junction with Marine Road	A
003_002_002	MARINE ROAD	ALNMOUTH	East	A point 100 metres south of its junction with The Wynd	A
003_006_002	THE WYND	ALNMOUTH	South	At its junction with Northumberland Street to its junction with Marine Road	A
003_002_003	MARINE ROAD	ALNMOUTH	West	At its junction with The Wynd to a point 100 metres south of its junction with The Wynd	A
003_005_001	RIVERSIDE ROAD	ALNMOUTH	East	At its junction with Marine Road to a point 6 metres south of its junction with Marine Road	A
003_001_002	ARGYLE STREET	ALNMOUTH	North	At its junction with Northumberland Street to a point 8 metres west of its junction with Northumberland Street	A
003_003_003	NORTHUMBERLAND STREET	ALNMOUTH	West	At its junction with Argyle Street to a point 20 metres north of its junction with Argyle Street	A



003_004_001	PEASES LANE	ALNMOUTH	South	At its junction with Northumberland Street to a point 4 metres east of its junction with Northumberland Street	A
003_003_004	NORTHUMBERLAND STREET	ALNMOUTH	East	At its junction with Peases Lane to a point 160 metres north-west of its junction with Peases Lane	A
003_003_005	NORTHUMBERLAND STREET	ALNMOUTH	East	At its junction with Victoria Place to its junction with Peases Lane	A
003_002_004	MARINE ROAD	ALNMOUTH	East	A point 10 metres south of its junction with The Wynd to a point 100 metres south of its junction with The Wynd	A
003_007_001	NORTHUMBERLAND STREET	ALNMOUTH	West	At its junction with Riverside Road to its junction with Argyle Street	A
003_007_003	NORTHUMBERLAND STREET	ALNMOUTH	East	At its junction with Marine Road to its junction with Northumberland Street	A
003_007_002	MARINE ROAD	ALNMOUTH	North	At its junction with Victoria Place to a point 22 metres east of its junction with Victoria Place	A
003_17_000_5564	NORTHUMBERLAND STREET	ALNMOUTH	East	At a point 42 metres north of its junction with The Wynd to a point 58 metres North of its junction with The Wynd	A
003_17_000_5565	NORTHUMBERLAND STREET	ALNMOUTH	East	At its junction with The Wynd to a point 37 metres North of its junction with The Wynd	A
003_17_000_5481	U3026 MARINE ROAD TO GOLF COURSE	ALNMOUTH	North West	At its junction with The Wynd to a point 20 metres north east of its junction with The Wynd	A
003_17_000_5482	U3026 MARINE ROAD TO GOLF COURSE	ALNMOUTH	South East	At its junction with Marine Road to a point 24 metres north east of its junction with Marine Road	A
003_17_000_5486	RIVERSIDE ROAD	ALNMOUTH	East	At its junction with Marine Road to a point 13 metres south west of its junction with Marine Road	A

**ROAD TRAFFIC REGULATION ACT 1984  
THE COUNTY OF NORTHUMBERLAND**

**NORTH NORTHUMBERLAND (CENTRAL) AREA (WAITING AND LOADING)  
COMPOSITE ORDER 2011 AMENDMENT NO 25 ORDER 2018**

**&**

**NORTH NORTHUMBERLAND (CENTRAL) AREA (PARKING PLACES)  
COMPOSITE ORDER 2011 AMENDMENT NO 18 ORDER 2018**

**STATEMENT OF THE COUNCIL'S REASONS  
FOR MAKING THE ORDER**

The Orders have been considered necessary to improve movement, reduce congestion and to formalise parking in the village.

CONTRACT  
DRAWING No.

Northumberland  
Northumberland County Council

Notes:  
1. All dimensions are in metres unless otherwise stated.  
2. All dimensions are to the centre of the road unless otherwise stated.  
3. All dimensions are to the face of the kerb unless otherwise stated.  
4. All dimensions are to the face of the pavement unless otherwise stated.  
5. All dimensions are to the face of the footpath unless otherwise stated.  
6. All dimensions are to the face of the verge unless otherwise stated.  
7. All dimensions are to the face of the boundary unless otherwise stated.  
8. All dimensions are to the face of the building unless otherwise stated.  
9. All dimensions are to the face of the fence unless otherwise stated.  
10. All dimensions are to the face of the wall unless otherwise stated.  
11. All dimensions are to the face of the gate unless otherwise stated.  
12. All dimensions are to the face of the door unless otherwise stated.  
13. All dimensions are to the face of the window unless otherwise stated.  
14. All dimensions are to the face of the roof unless otherwise stated.  
15. All dimensions are to the face of the ground unless otherwise stated.  
16. All dimensions are to the face of the sky unless otherwise stated.  
17. All dimensions are to the face of the earth unless otherwise stated.  
18. All dimensions are to the face of the water unless otherwise stated.  
19. All dimensions are to the face of the air unless otherwise stated.  
20. All dimensions are to the face of the fire unless otherwise stated.

NOTES

1. DRAWING TO BE READ IN CONJUNCTION WITH THE DRAWING NO. 100/114
2. THE DRAWING NO. 100/114 IS THE MAIN DRAWING FOR THE PROJECT AND THIS DRAWING IS A DETAIL OF THE MAIN DRAWING.
3. THE DRAWING NO. 100/114 IS THE MAIN DRAWING FOR THE PROJECT AND THIS DRAWING IS A DETAIL OF THE MAIN DRAWING.
4. THE DRAWING NO. 100/114 IS THE MAIN DRAWING FOR THE PROJECT AND THIS DRAWING IS A DETAIL OF THE MAIN DRAWING.
5. THE DRAWING NO. 100/114 IS THE MAIN DRAWING FOR THE PROJECT AND THIS DRAWING IS A DETAIL OF THE MAIN DRAWING.
6. THE DRAWING NO. 100/114 IS THE MAIN DRAWING FOR THE PROJECT AND THIS DRAWING IS A DETAIL OF THE MAIN DRAWING.
7. THE DRAWING NO. 100/114 IS THE MAIN DRAWING FOR THE PROJECT AND THIS DRAWING IS A DETAIL OF THE MAIN DRAWING.
8. THE DRAWING NO. 100/114 IS THE MAIN DRAWING FOR THE PROJECT AND THIS DRAWING IS A DETAIL OF THE MAIN DRAWING.
9. THE DRAWING NO. 100/114 IS THE MAIN DRAWING FOR THE PROJECT AND THIS DRAWING IS A DETAIL OF THE MAIN DRAWING.
10. THE DRAWING NO. 100/114 IS THE MAIN DRAWING FOR THE PROJECT AND THIS DRAWING IS A DETAIL OF THE MAIN DRAWING.
11. THE DRAWING NO. 100/114 IS THE MAIN DRAWING FOR THE PROJECT AND THIS DRAWING IS A DETAIL OF THE MAIN DRAWING.
12. THE DRAWING NO. 100/114 IS THE MAIN DRAWING FOR THE PROJECT AND THIS DRAWING IS A DETAIL OF THE MAIN DRAWING.
13. THE DRAWING NO. 100/114 IS THE MAIN DRAWING FOR THE PROJECT AND THIS DRAWING IS A DETAIL OF THE MAIN DRAWING.
14. THE DRAWING NO. 100/114 IS THE MAIN DRAWING FOR THE PROJECT AND THIS DRAWING IS A DETAIL OF THE MAIN DRAWING.
15. THE DRAWING NO. 100/114 IS THE MAIN DRAWING FOR THE PROJECT AND THIS DRAWING IS A DETAIL OF THE MAIN DRAWING.
16. THE DRAWING NO. 100/114 IS THE MAIN DRAWING FOR THE PROJECT AND THIS DRAWING IS A DETAIL OF THE MAIN DRAWING.
17. THE DRAWING NO. 100/114 IS THE MAIN DRAWING FOR THE PROJECT AND THIS DRAWING IS A DETAIL OF THE MAIN DRAWING.
18. THE DRAWING NO. 100/114 IS THE MAIN DRAWING FOR THE PROJECT AND THIS DRAWING IS A DETAIL OF THE MAIN DRAWING.
19. THE DRAWING NO. 100/114 IS THE MAIN DRAWING FOR THE PROJECT AND THIS DRAWING IS A DETAIL OF THE MAIN DRAWING.
20. THE DRAWING NO. 100/114 IS THE MAIN DRAWING FOR THE PROJECT AND THIS DRAWING IS A DETAIL OF THE MAIN DRAWING.

LEGEND

PROPOSED SIGN DIMENSIONS	PROPOSED SIGN
2m x 2.1m	2m x 2.1m
2m x 2.1m	2m x 2.1m
2m x 2.1m	2m x 2.1m
2m x 2.1m	2m x 2.1m
2m x 2.1m	2m x 2.1m
2m x 2.1m	2m x 2.1m
2m x 2.1m	2m x 2.1m
2m x 2.1m	2m x 2.1m
2m x 2.1m	2m x 2.1m
2m x 2.1m	2m x 2.1m

PROPOSED SIGN

EXISTING SIGN

DOUBLE YELLOW EXTENDED

TOY SIGN ADDED

ONE WAY LINE ADDED AT ENTRY APPROACH TO ROAD/STREET

DOUBLE YELLOW EXTENDED

TOY SIGN ADDED

ONE WAY LINE ADDED AT ENTRY APPROACH TO ROAD/STREET

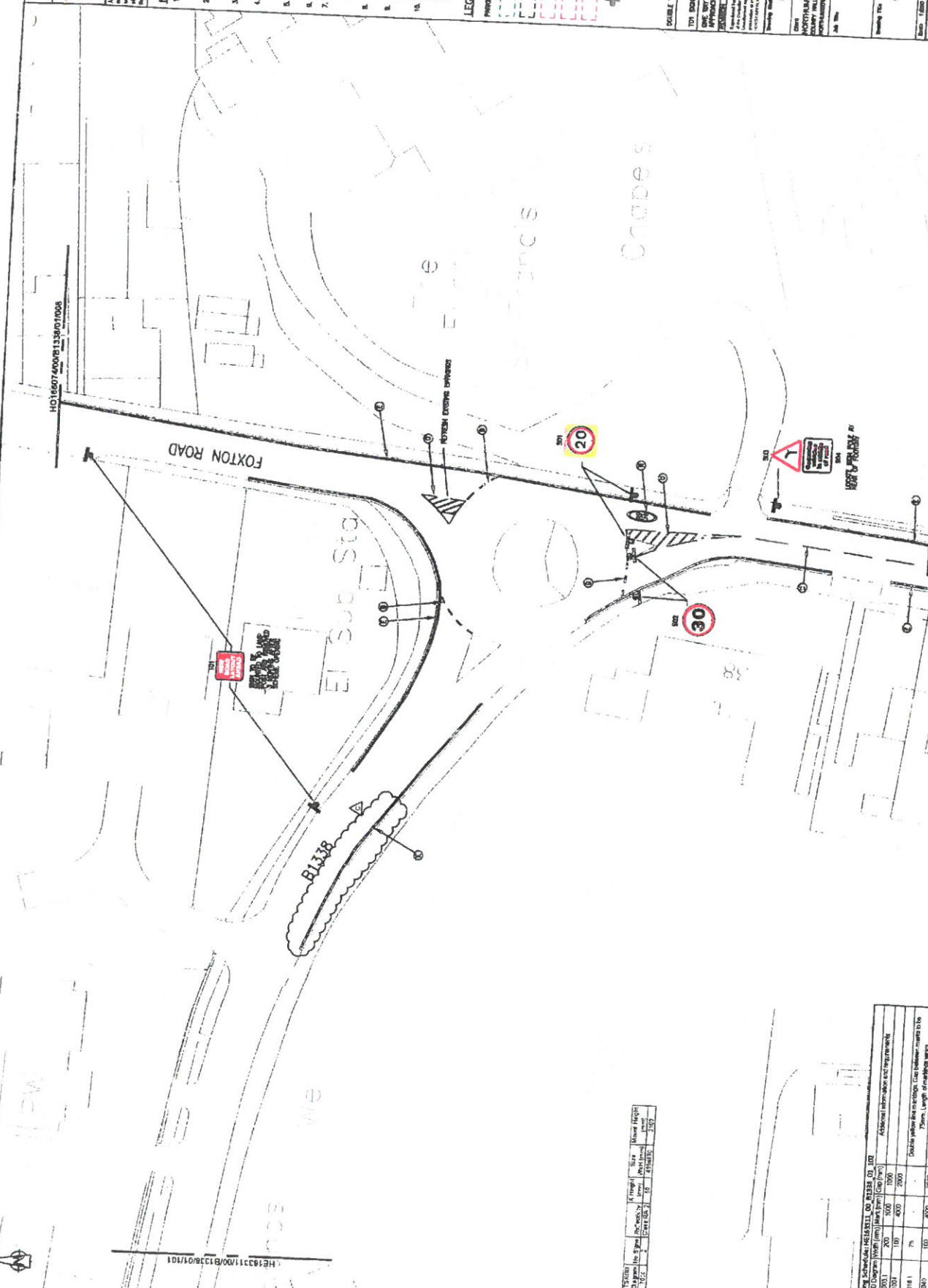
DOUBLE YELLOW EXTENDED

TOY SIGN ADDED

ONE WAY LINE ADDED AT ENTRY APPROACH TO ROAD/STREET

DOUBLE YELLOW EXTENDED

TOY SIGN ADDED



Sign No.	Sign Description	Sign Size	Sign Material	Sign Colour	Sign Shape	Sign Text	Sign Location	Sign Date	Sign Status
1	30	200	200	200	200	200	200	200	200
2	20	200	200	200	200	200	200	200	200
3	100	200	200	200	200	200	200	200	200
4	100	200	200	200	200	200	200	200	200
5	100	200	200	200	200	200	200	200	200
6	100	200	200	200	200	200	200	200	200
7	100	200	200	200	200	200	200	200	200
8	100	200	200	200	200	200	200	200	200
9	100	200	200	200	200	200	200	200	200
10	100	200	200	200	200	200	200	200	200

Northumberland  
Northumberland County Council

Technical Services

HE18331100/1338/0100





Asks removal, on just of this document may be reported to its any  
 said have including photographing or filming in any building without the  
 the permission of the United States Customs Service except in accordance  
 the provisions of Copyright, Trademark and Patent Act (1908).  
 collected materials may lead to prosecution in civil proceedings.

DRAWING TO BE USED IN CONNECTION WITH DRAWINGS 103-01-101 TO 114 AND 103-01-115 TO 120, TO REMAIN. ROAD MARKINGS SHALL BE PAINTED IN ACCORDANCE WITH THE MICHIGAN MANUAL ON PRACTICE ROAD MARKING, 1987 EDITION, AND THE MICHIGAN MANUAL ON PRACTICE ROAD MARKING, 1990 EDITION. THE TYPING SHOULD BE WITH ROAD MARKINGS 201, 202, 203, 204, 205, 206, 207, 208, 209, 210, 211, 212, 213, 214, 215, 216, 217, 218, 219, 220, 221, 222, 223, 224, 225, 226, 227, 228, 229, 230, 231, 232, 233, 234, 235, 236, 237, 238, 239, 240, 241, 242, 243, 244, 245, 246, 247, 248, 249, 250, 251, 252, 253, 254, 255, 256, 257, 258, 259, 260, 261, 262, 263, 264, 265, 266, 267, 268, 269, 270, 271, 272, 273, 274, 275, 276, 277, 278, 279, 280, 281, 282, 283, 284, 285, 286, 287, 288, 289, 290, 291, 292, 293, 294, 295, 296, 297, 298, 299, 300, 301, 302, 303, 304, 305, 306, 307, 308, 309, 310, 311, 312, 313, 314, 315, 316, 317, 318, 319, 320, 321, 322, 323, 324, 325, 326, 327, 328, 329, 330, 331, 332, 333, 334, 335, 336, 337, 338, 339, 340, 341, 342, 343, 344, 345, 346, 347, 348, 349, 350, 351, 352, 353, 354, 355, 356, 357, 358, 359, 360, 361, 362, 363, 364, 365, 366, 367, 368, 369, 370, 371, 372, 373, 374, 375, 376, 377, 378, 379, 380, 381, 382, 383, 384, 385, 386, 387, 388, 389, 390, 391, 392, 393, 394, 395, 396, 397, 398, 399, 400, 401, 402, 403, 404, 405, 406, 407, 408, 409, 410, 411, 412, 413, 414, 415, 416, 417, 418, 419, 420, 421, 422, 423, 424, 425, 426, 427, 428, 429, 430, 431, 432, 433, 434, 435, 436, 437, 438, 439, 440, 441, 442, 443, 444, 445, 446, 447, 448, 449, 450, 451, 452, 453, 454, 455, 456, 457, 458, 459, 460, 461, 462, 463, 464, 465, 466, 467, 468, 469, 470, 471, 472, 473, 474, 475, 476, 477, 478, 479, 480, 481, 482, 483, 484, 485, 486, 487, 488, 489, 490, 491, 492, 493, 494, 495, 496, 497, 498, 499, 500, 501, 502, 503, 504, 505, 506, 507, 508, 509, 510, 511, 512, 513, 514, 515, 516, 517, 518, 519, 520, 521, 522, 523, 524, 525, 526, 527, 528, 529, 530, 531, 532, 533, 534, 535, 536, 537, 538, 539, 540, 541, 542, 543, 544, 545, 546, 547, 548, 549, 550, 551, 552, 553, 554, 555, 556, 557, 558, 559, 560, 561, 562, 563, 564, 565, 566, 567, 568, 569, 570, 571, 572, 573, 574, 575, 576, 577, 578, 579, 580, 581, 582, 583, 584, 585, 586, 587, 588, 589, 590, 591, 592, 593, 594, 595, 596, 597, 598, 599, 600, 601, 602, 603, 604, 605, 606, 607, 608, 609, 610, 611, 612, 613, 614, 615, 616, 617, 618, 619, 620, 621, 622, 623, 624, 625, 626, 627, 628, 629, 630, 631, 632, 633, 634, 635, 636, 637, 638, 639, 640, 641, 642, 643, 644, 645, 646, 647, 648, 649, 650, 651, 652, 653, 654, 655, 656, 657, 658, 659, 660, 661, 662, 663, 664, 665, 666, 667, 668, 669, 670, 671, 672, 673, 674, 675, 676, 677, 678, 679, 680, 681, 682, 683, 684, 685, 686, 687, 688, 689, 690, 691, 692, 693, 694, 695, 696, 697, 698, 699, 700, 701, 702, 703, 704, 705, 706, 707, 708, 709, 710, 711, 712, 713, 714, 715, 716, 717, 718, 719, 720, 721, 722, 723, 724, 725, 726, 727, 728, 729, 730, 731, 732, 733, 734, 735, 736, 737, 738, 739, 740, 741, 742, 743, 744, 745, 746, 747, 748, 749, 750, 751, 752, 753, 754, 755, 756, 757, 758, 759, 760, 761, 762, 763, 764, 765, 766, 767, 768, 769, 770, 771, 772, 773, 774, 775, 776, 777, 778, 779, 780, 781, 782, 783, 784, 785, 786, 787, 788, 789, 790, 791, 792, 793, 794, 795, 796, 797, 798, 799, 800, 801, 802, 803, 804, 805, 806, 807, 808, 809, 810, 811, 812, 813, 814, 815, 816, 817, 818, 819, 820, 821, 822, 823, 824, 825, 826, 827, 828, 829, 830, 831, 832, 833, 834, 835, 836, 837, 838, 839, 840, 841, 842, 843, 844, 845, 846, 847, 848, 849, 850, 851, 852, 853, 854, 855, 856, 857, 858, 859, 860, 861, 862, 863, 864, 865, 866, 867, 868, 869, 870, 871, 872, 873, 874, 875, 876, 877, 878, 879, 880, 881, 882, 883, 884, 885, 886, 887, 888, 889, 890, 891, 892, 893, 894, 895, 896, 897, 898, 899, 900, 901, 902, 903, 904, 905, 906, 907, 908, 909, 910, 911, 912, 913, 914, 915, 916, 917, 918, 919, 920, 921, 922, 923, 924, 925, 926, 927, 928, 929, 930, 931, 932, 933, 934, 935, 936, 937, 938, 939, 940, 941, 942, 943, 944, 945, 946, 947, 948, 949, 950, 951, 952, 953, 954, 955, 956, 957, 958, 959, 960, 961, 962, 963, 964, 965, 966, 967, 968, 969, 970, 971, 972, 973, 974, 975, 976, 977, 978, 979, 980, 981, 982, 983, 984, 985, 986, 987, 988, 989, 990, 991, 992, 993, 994, 995, 99

Find the perimeters:

5m x 1.8m	5m x 2.1m	8m x 2.1m	0.6m x 2.2m (Dashed)	5.5m x 2.1m	6m x 2.5m
-----------	-----------	-----------	----------------------	-------------	-----------

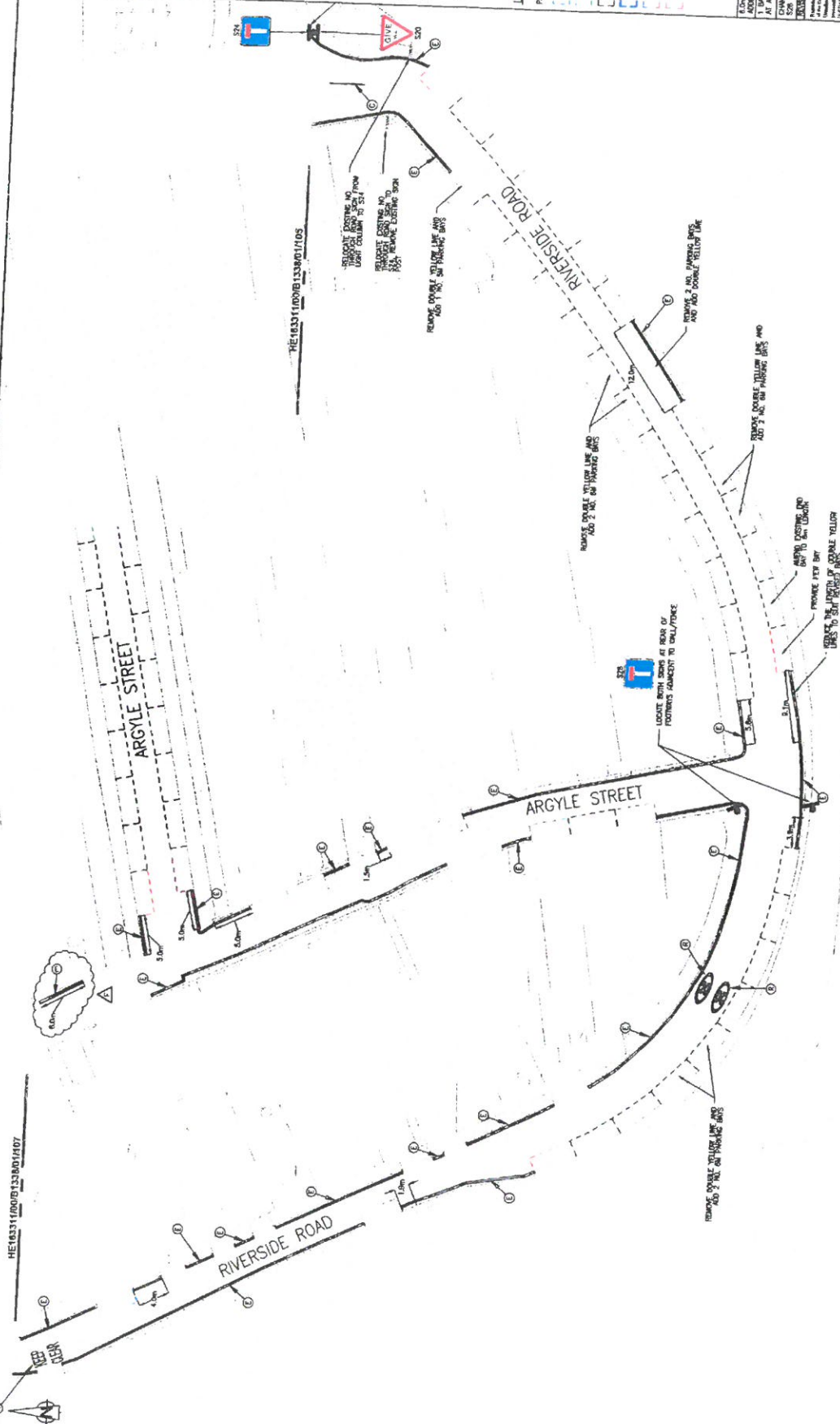
	F	E	D	Pt. Location
	NH	DP	WP	
DRIVING YELLOW LINES TO RACINE STREET IMPROVED, I SAY AHEAD, LE STREET JUNCTION, TO BRITS AND DYS. ED.				

BERLAND COUNTY COUNCIL  
L. NORMAN  
BLAND, MISSISSIPPI 257 TEL 61870 533000

CENTRAL ARRANGEMENT  
SHEET 8 OF 8

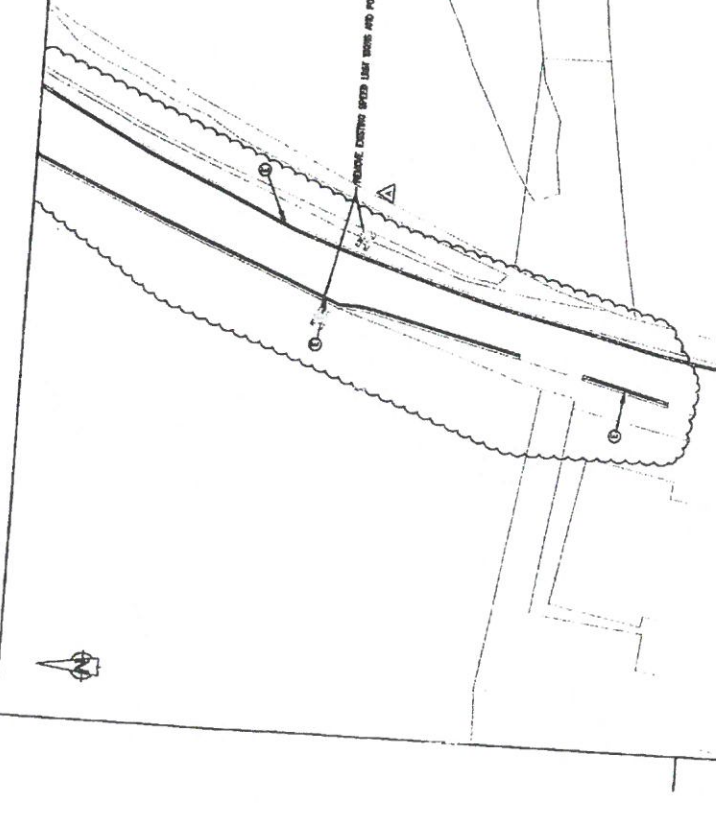
Date <b>SEP 16</b>	Checked <b>LW</b>	Prepared <b>SF</b>
-----------------------	----------------------	-----------------------

Index	Material	Schweibel	WEHABILL	CL 136	
1	2000	2000	2000	600	300
2	1500A	1500A	1500A	4000	2000
3	1500B	1500B	1500B	100	500
4	1500C	1500C	1500C	100	500
5	1010A	1010A	1010A	800	300
6	1010B	1010B	1010B	75	-
7	1020A	1020A	1020A	-	-
8	1020B	1020B	1020B	-	-
9	1030A	1030A	1030A	50	600
10	1030B	1030B	1030B	-	-
11	1060	1060	1060	-	-





4-2



55	Entry	Standard	Percent
	SDP	10	53

Fixed Marking Schedule for HS16331 OD BL1938 01_106				
CODE	TSRGO Diagram	Width (mm)	Mark (mm)	Gap (mm)
E	1018.1	76	-	-
Additional information and requirements Dorize yellow line to indicate the location				