

NORTHUMBERLAND COUNTY COUNCIL

TRAFFIC REGULATION ORDER

(Ref: TRO_011_57)

Northumberland County Council

NCC South East Northumberland Area (Waiting & Loading)

Composite Order 2011

Amendment No 57 Order 2018

Made: 18th January 2018

Coming into Force: 29th January 2018

Northumberland County Council (hereinafter referred to as "the Council") in exercise of their powers under Sections 1, 2 and 4 and Paragraphs 20 and 27 of Schedule 9 of the Road Traffic Regulation Act 1984 ("the Act of 1984"), and after consulting with the Chief Officer of Police in accordance with Part III of Schedule 9 to the Act of 1984 and of all other enabling powers hereby make the following Order:-

1. Commencement and Citation

This Order shall come into operation on the 29th January 2018 and may be cited as "Northumberland County Council South East Northumberland Area (Waiting and Loading) Composite Order 2011 - Amendment No 57 Order 2018".

2. In the Order:-

"Order" means "Northumberland County Council South East Northumberland Area (Waiting and Loading) Composite Order 2011".

"Amendment Order" means "Northumberland County Council South East Northumberland Area (Waiting and Loading) Composite Order 2011- Amendment No 57 Order 2018".

The Interpretation Act 1978 shall apply to this Order as it applies to an Act of Parliament.

3. Provisions

The following provisions set out below and in The Schedule to this Amendment Order shall be additions to, deletions from, or substitutions in the restrictions in the Order:

(A) Additions

to Schedule 1 –Waiting

(Referenced in this Amendment Order as: The Schedule - ADDITIONS)

to Schedule 2 - Loading

(Referenced in this Amendment Order as: The Schedule - ADDITIONS)

(B) Deletions

None

(C) Substitutions

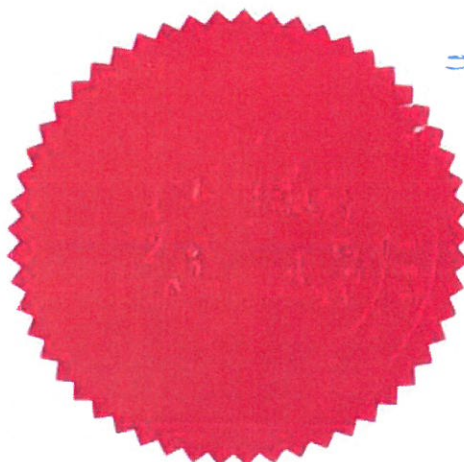
None

GIVEN under the Common Seal of the County Council of Northumberland this 18th day of January 2018.

THE COMMON SEAL OF THE COUNTY COUNCIL OF NORTHUMBERLAND was hereunto affixed in the presence of:-



Duly Authorised Officer



seal no -
1837

THE SCHEDULE

ADDITIONS – Northumberland County Council South East Northumberland Area (Waiting and Loading) Composite Order 2011 - Amendment No 57 Order 2017- TRO_011_57

Schedule 1 – Waiting

Ref	Town	Street	Side	Description	Proscribed Hours
011_57_000_6435	Blyth	East Park View	South	From a point 90 metres East of its junction with Park View to a point 99 metres East of its junction with Park View	A
011_57_000_6434	Blyth	East Park View	South	From a point 80 metres East of its junction with Park View to a point 87 metres East of its junction with Park View	A
011_57_000_6429	Blyth	East Park View	North	From its junction with Bath Terrace Back Lane to a point 55 metres East of its junction with Bath Terrace Back Lane	A
011_57_000_6323	Blyth	Solingen Estate	West	From its junction with Pioneer Way to a point 29 metres South of its junction with Pioneer Way	A
011_57_000_6321	BLYTH	QUAY ROAD 2	South West	At its junction with Wellington Street East to a point 31 metres South East of its junction with Wellington Street East	A
011_57_000_6310	Blyth	East Park View	South	From a point 38 metres East of its junction with Park View to a point 43 metres East of its junction with Park View	A
011_57_000_6304	Blyth	East Park View	North	From its junction with U9512 Bath Terrace Back Lane to a point 10 metres West of its junction with U9512 Bath Terrace Back Lane	A
011_57_000_6303	Blyth	Park View	East	From a point 202 metres North East of its junction with Ridley Avenue to its junction with East Park View	A
011_57_000_6302	Blyth	East Park View	South	From its junction with Park View to a point 29 metres East of its junction with Park View	A
011_57_000_6296	Blyth	Park View	East	At its junction with Ridley Avenue to a point 59 metres North East of its junction with Ridley Avenue.	A

011_57_000 _6295	Blyth	Park View	North	From its junction with Ridley Avenue to a point 15 metres North East of its junction with Ridley Avenue	A
011_57_000 _5959	BLYTH	WELLINGTON STREET EAST	South	At its junction with Quay Road 2 to a point 34 metres West of its junction with Quay Road 2	A
011_57_000 _5958	BLYTH	Quay Road 2	North East	At its junction with Quay Road to a point 36 meters Southeast of its junction with Quay Road	A
011_57_000 _5957	BLYTH	Low Quay	East	From its junction with Quay Road 2 to a point 31 metres North of its junction with Quay Road 2	A
011_57_000 _5956	BLYTH	Low Quay	West	At its junction with Wellington Street East to a point 27 metres north of its junction with Wellington Street East	A
011_57_000 _5955	BLYTH	Wellington Street East	North West	At its junction with Bridge Street to its junction with Low Quay	A

THE SCHEDULE

**ADDITIONS – Northumberland County Council South East Northumberland
Area (Waiting and Loading) Composite Order 2011 - Amendment No 57 Order
2018 - TRO_011_57**

Schedule 2 – Loading

Ref	Town	Street	Side	Description	Proscribed Hours
011_57 _000_6 300	Blyth	Park View	East	From a point 99 metres North East of its junction with Ridley Avenue to a point 111 metres North East of its junction with Ridley Avenue	A

**ROAD TRAFFIC REGULATION ACT 1984
THE COUNTY OF NORTHUMBERLAND
(VARIOUS LOCATIONS, ASHINGTON)**

**SOUTH EAST NORTHUMBERLAND AREA (WAITING AND LOADING)
COMPOSITE ORDER 2011 AMENDMENT NO 57 ORDER 2018**

(TRO_011_57)

STATEMENT OF COUNCILS REASONS FOR MAKING THE ORDER

The introduction of the parking restrictions in various streets in Blyth to reduce congestion and improve road safety.

All rights reserved. No part of this drawing may be reproduced, stored in a retrieval system, or transmitted in any form or by any means, electronic, mechanical, photocopying, recording, or by any information storage and retrieval system, without the prior written permission of the Northumberland County Council. This drawing is the property of the Northumberland County Council and is loaned to the client for their use only. It is not to be used for any other purpose without the prior written permission of the Northumberland County Council.

NOTES

- 1.0 GENERAL
 - 1.1 THIS DRAWING IS TO BE READ IN CONJUNCTION WITH DRAWING A.2 AND THE SPECIFICATION OF WORKS.
- 2.0 TRAFFIC SIGNS & ROAD MARKINGS
 - 2.1 NEW SIGNS TO COMPLY WITH THE REQUIREMENTS OF THE ROAD MARKINGS REGULATIONS 1998-2007, AND NATIONAL ANEX. BE MANUFACTURED FROM ALUMINIUM COMPOSITE PANELS UNLESS SPECIFIED OTHERWISE IN TRAFFIC SIGN SCHEDULE.
 - 2.2 SIGNAGE TO BE IN ACCORDANCE WITH THE REQUIREMENTS OF THE ROAD MARKINGS REGULATIONS 1998-2007, AND NATIONAL ANEX. HAS BEEN ASSESSED USING BLACKMAN 'SIGNOLOGY' SOFTWARE OR SIMILAR APPROVED SOFTWARE.
 - 2.3 ALL MECHANICAL FASTENERS FOR NEW SIGNS TO BE PROVIDED ONLY FROM INSIDE APPROVED SOURCES.
 - 2.4 EXISTING SIGNAGE TO BE REMOVED AND REPLACED BY NEW SIGNAGE.
 - 2.5 ROAD MARKINGS TO BE WHITE OR YELLOW (CLASSES Y1 AND Y2) COMPLYING WITH BS EN 1438 TABLE 5.
 - 2.6 ROAD MARKINGS TO BE WHITE OR YELLOW (CLASSES Y1 AND Y2) COMPLYING WITH BS EN 1438 TABLE 5.
 - 2.7 ROAD MARKINGS SHALL BE WHITE OR YELLOW (CLASSES Y1 AND Y2) COMPLYING WITH BS EN 1438 TABLE 5.
 - 2.8 ROAD MARKINGS SHALL BE WHITE OR YELLOW (CLASSES Y1 AND Y2) COMPLYING WITH BS EN 1438 TABLE 5.
 - 2.9 THE MINIMUM LINE WIDTHS SHALL BE 150mm FOR SPEED APPLIED MARKINGS, AND 100mm FOR OTHER APPLIED MARKINGS. IN ALL CASES THE MARKINGS SHALL BE LAID ABOVE THE ROAD SURFACE.
 - 2.10 ENGINE DRIVEN MARKINGS SHALL BE LAID IN YELLOW LINES AND PARKING REGULATION DOSES.
 - 2.11 BAYS TO BE YELLOW LINES AND PARKING REGULATION DOSES.

GENERAL AGREEMENT	APPROVED BY	DATE
Checked by	Approved by	Approved by
Drawn by	Checked by	Checked by
Designed by	Designed by	Designed by

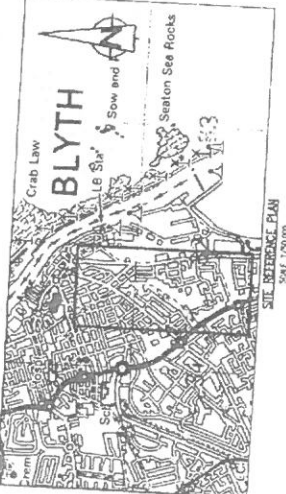
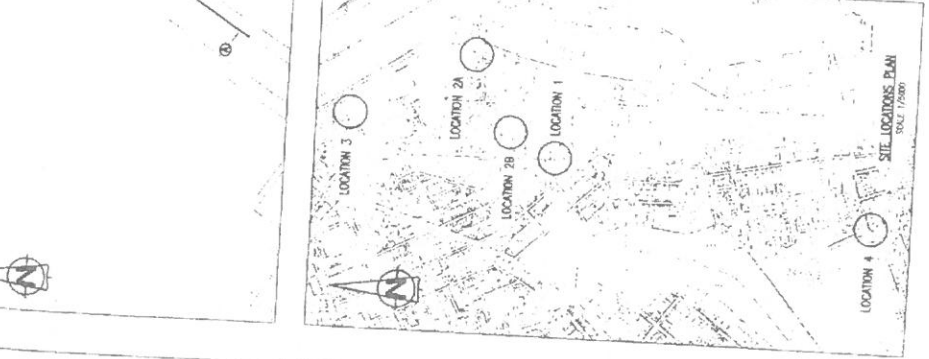
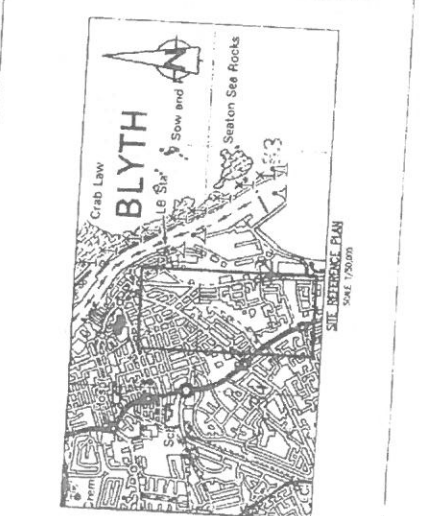
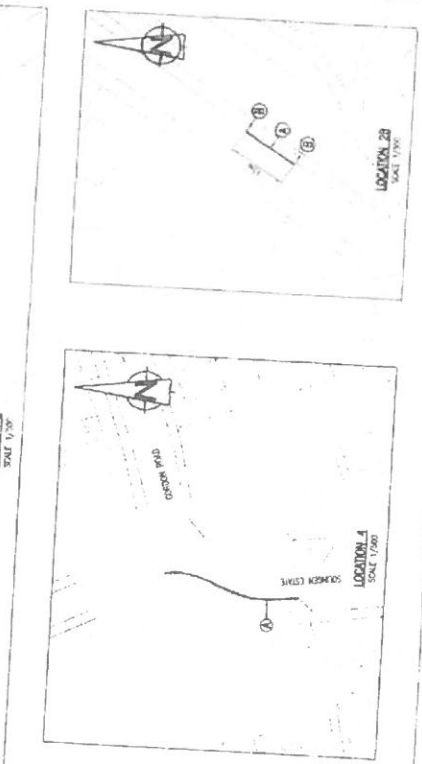
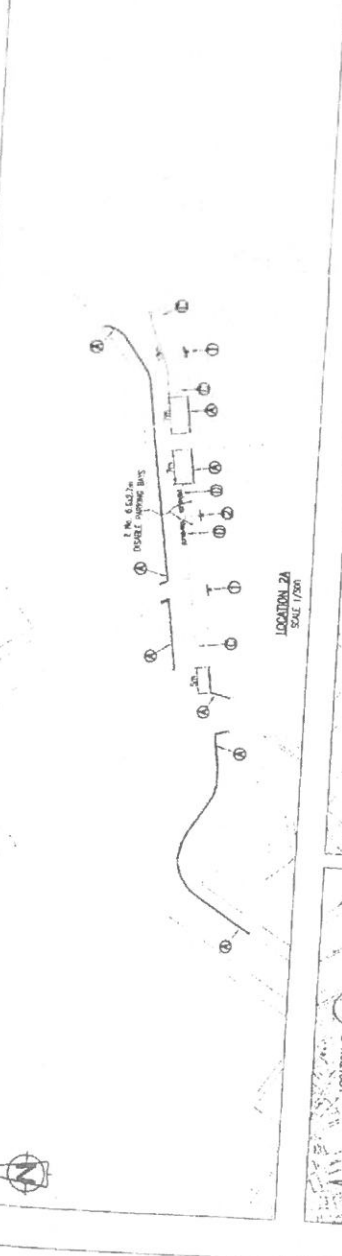
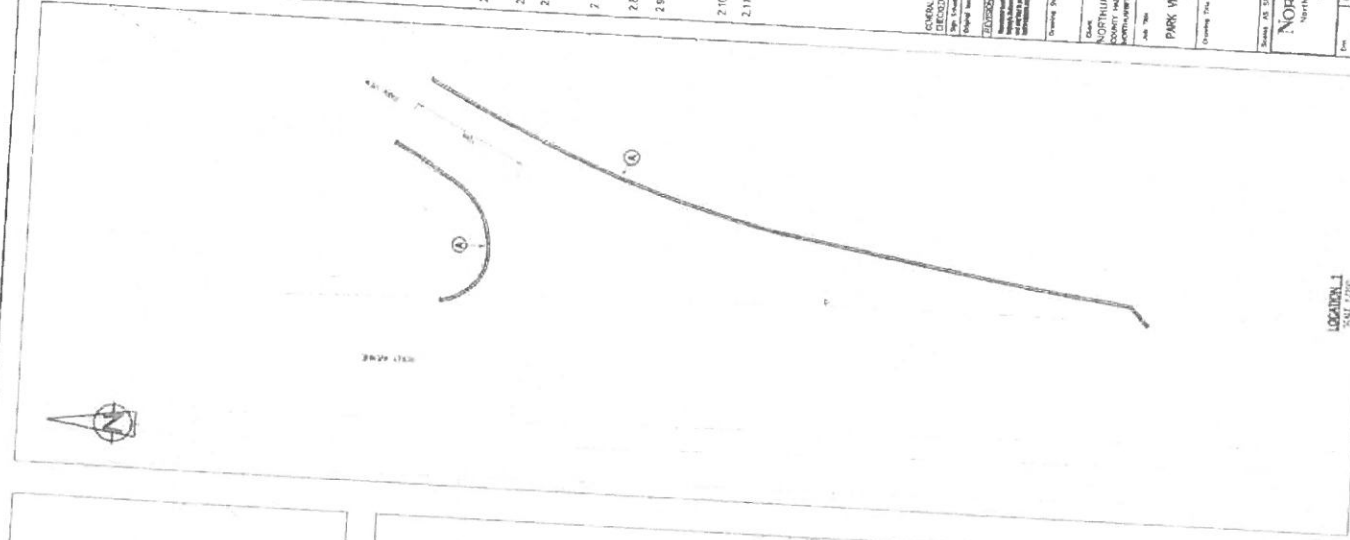
CONTRACT
COUNTY OF NORTHUMBERLAND
NORTHUMBERLAND COUNTY COUNCIL
COUNTY HALL, NORTHUMBERLAND
NORTHUMBERLAND, NE1 1ST

BLVTH QUAYSIDE PARK VIEW/ROCK AVENUE JUNCTION PARKING RESTRICTIONS

LOCATIONS 1 - 4 SCHEME UNDO

Northumberland
Northumberland County Council
Northumberland Services

Drawn by: [Name]
Checked by: [Name]
Approved by: [Name]
Date: [Date]
Drawing No: [Number]
Scale: [Scale]



ROAD MARKING SCHEDULE				
REFERENCE	TSR & GD DIAGRAM No.	MARK (m)	GAP (m)	USE
(A)	1018.1	CONTINUOUS		DOUBLE YELLOW LINES
(B)	1020.1	0.3	0.1	YELLOW MARKINGS ON KERB, PROHIBITION OF LOADING.
(C)	1028.3	0.6	0.6	PARKING BAY
(D)	1028.3	0.6	-	DISABLED LETTERING

NEW TRAFFIC SIGNS											
REF	TSR&GD 2016 DMC. No.	'X' HEIGHT (mm)	LEGEND	No. OFF	SURFACE	APPROX. SIZE (m)	POSTS/SIGNS			MOUNT HEIGHT (m)	REMARKS
							DIA (mm)	LENGTH (m)	no		
①	Sch4, P14, ITEM 2	30	<div><div><div>P</div><div>8 am - 6 pm 2 hours No return within 3 hours</div></div></div>	2	CLASS RA2	0.560 x 0.295	75	2.9	1	2.1	
②	Sch4, P14, ITEM 2 Sch4, P15, ITEM 4	30 - 30	<div><div><div>P</div><div>Disabled badge holders only 8 am - 6 pm 2 hours No return within 3 hours</div></div></div>	1	CLASS RA2	0.575 x 0.535	76	3.15	1	2.1	

Reproduction/translation of this document is prohibited without the written permission of the Controller of Her Majesty's Stationery Office. © Crown copyright. Unauthorised reproduction infringes Crown copyright and may lead to prosecution or civil proceedings.
NORTHUMBERLAND COUNTY COUNCIL - 03/03/2016 (10004346) (2009)

CONTRACT DRAWING No.		DRAWING SIZE A3
Northumberland Northumberland County Council		
NOTES 1.0 GENERAL: 1.1 ALL DIMENSIONS IN [MM] U.N.O. 1.2 ALL LEVELS IN [M] ABOVE ORDNANCE DATUM U.N.O. 1.3 THIS DRAWING IS TO BE READ IN CONJUNCTION WITH DRAWING HO166169/00/C413/01/01 SCHEME LAYOUT.		
CONTRACT Client NORTHUMBERLAND COUNTY COUNCIL COUNTY HALL, MORPETH, NORTHUMBERLAND, NE61 2EF Job Title BLYTH QUAYSIDE PARK VIEW/RIDLEY AVENUE JUNCTION PARKING RESTRICTIONS Drawing Title SCHEDULE OF SIGNS AND ROADMARKINGS		
Scales MTS		
Northumberland Northumberland County Council TECHNICAL SERVICES		
Dm PF	Date 16.10.17	Checked AW/SF
Drawing Number HO166169/00/C413/01/02		Passed SF
Job Number/File Number		Rev