

**ROAD TRAFFIC REGULATION ACT 1984 THE COUNTY COUNCIL OF
NORTHUMBERLAND**

**SOUTH EAST NORTHUMBERLAND AREA (WAITING AND LOADING)
COMPOSITE ORDER - AMENDMENT No 28
EXPERIMENTAL ORDER 2015 (TRO_011_28)**

Northumberland County Council in exercise of its powers under Sections 1(1)(a),(c) and 9 of the Road Traffic Regulation Act 1984, hereby make the following Order:-

PART 1 PRELIMINARY

1. Commencement and Citation

This Order shall come into operation on 1st September 2015, until 31st August 2016 and may be cited as the "The County of Northumberland South East Northumberland Area (Waiting and Loading) Composite Order 2011 - Amendment No 28 Experimental Order 2015 (TRO_011_28)".

2. Interpretation

In this Order, unless the context otherwise requires, the following expressions have the meanings hereby respectively assigned to them:

"Council" means Northumberland County Council

"The Act" means the Road Traffic Regulation Act 1984

"The Principal Order" means South East Northumberland Area (Waiting and Loading) Composite Order 2011 (TRO_011)

3. General

- (1) The restrictions imposed by this Order shall be in addition to and not in derogation of any restrictions or requirements imposed by any Regulations made or having effect as if made under the Act or by or under any other enactment.
- (2) Where an Act of Parliament referred to in this Order or any Regulation, Direction or Order made under it is repealed and new provisions enacted (with or without modifications) new provisions shall be substituted in this Order where relevant.
- (3) The Interpretation Act 1978 shall apply to this Order as it applies to an Act of Parliament

PART 2 ADDITIONS & SUSPENSIONS OF WAITING AND LOADING RESTRICTIONS

1. Additions

(1) There shall be added to Schedule 1 of the Principal Order the waiting restrictions specified in the First Schedule of this Experimental Order.

2. Suspensions

None

PART 3 SUPPLEMENTARY PROVISIONS

The operation of this Experimental Order or any provision of it may be modified or suspended by the Council's Executive Director of Local Services if it appears to him essential -

- (a) in the interests of the expeditious, convenient and safe movement of traffic;
- (b) in the interests of providing suitable and adequate on-street parking facilities, or
- (c) for preserving or improving the amenities of the area through which any road affected by the order runs.

but this power shall be exercised only after consulting the appropriate chief officer of police and giving such public notice as the Secretary of State may direct

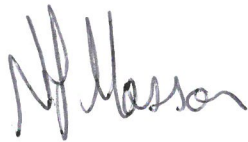
PART 4 REVOCATIONS

None

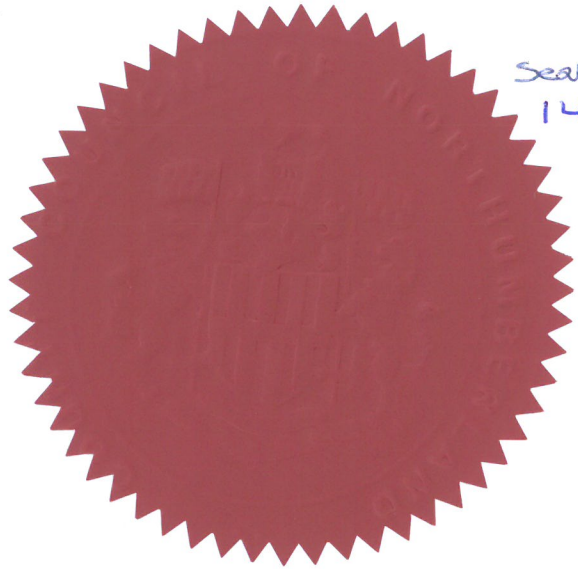
GIVEN under the Common Seal of the Northumberland County Council this
12th day of August 2015.

**THE COMMON SEAL OF THE COUNTY
COUNCIL OF NORTHUMBERLAND**

was hereunto affixed in the presence of:-



Duly Authorised Officer



Seal No:-
14444.

FIRST SCHEDULE

South East Northumberland Area (Waiting and Loading) Composite Order 2011 - Amendment No 28 Experimental Order 2015 (TRO_011_28)

ADDITIONS - Schedule 1 – Waiting

Ref No	Town	Street	Side	Description	Proscribed Hours
011_28_00_5310	CRAMLINGTON	NAIRN ROAD	North	At its junction with Newlyn Drive to a point 8 metres east of its junction with Newlyn Drive	A
011_28_00_5311	CRAMLINGTON	NAIRN ROAD	South	At its junction with Newlyn Drive to a point 8 metres east of its junction with Newlyn Drive	A
011_28_00_5301	CRAMLINGTON	NEEDHAM PLACE	South	At its junction with Newlyn Drive to a point 11 metres east of its junction with Newlyn Drive	A
011_28_00_5302	CRAMLINGTON	NEEDHAM PLACE	North	At its junction with Newlyn Drive to a point 11 metres east of its junction with Newlyn Drive	A
011_28_00_5299	CRAMLINGTON	NEWLYN DRIVE	East	At its junction with Needham Place to a point 13 metres north of its junction with Needham Place	A
011_28_00_5303	CRAMLINGTON	NEWLYN DRIVE	East	At its junction with Needham Place to a point 6 metres south of its junction with Needham Place	A
011_28_00_5304	CRAMLINGTON	NEWLYN DRIVE	West	At its junction with to its junction with Nayland Road	A
011_28_00_5305	CRAMLINGTON	NEWLYN DRIVE	East	At its junction with Nairn Road to a point 16 metres north of its junction with Nairn Road	A
011_28_00_5307	CRAMLINGTON	NEWLYN DRIVE	East	At its junction with Nairn Road to a point 24 metres south of its junction with Nairn Road	A

ROAD TRAFFIC REGULATION ACT 1984

THE COUNTY COUNCIL OF NORTHUMBERLAND

SOUTH EAST NORTHUMBERLAND AREA (WAITING AND LOADING)

COMPOSITE ORDER - AMENDMENT No 28

EXPERIMENTAL ORDER 2015 (TRO_011_28)

SOUTH EAST NORTHUMBERLAND AREA (PARKING PLACES)

COMPOSITE ORDER - AMENDMENT No 11

EXPERIMENTAL ORDER 2015 (TRO_012_11)

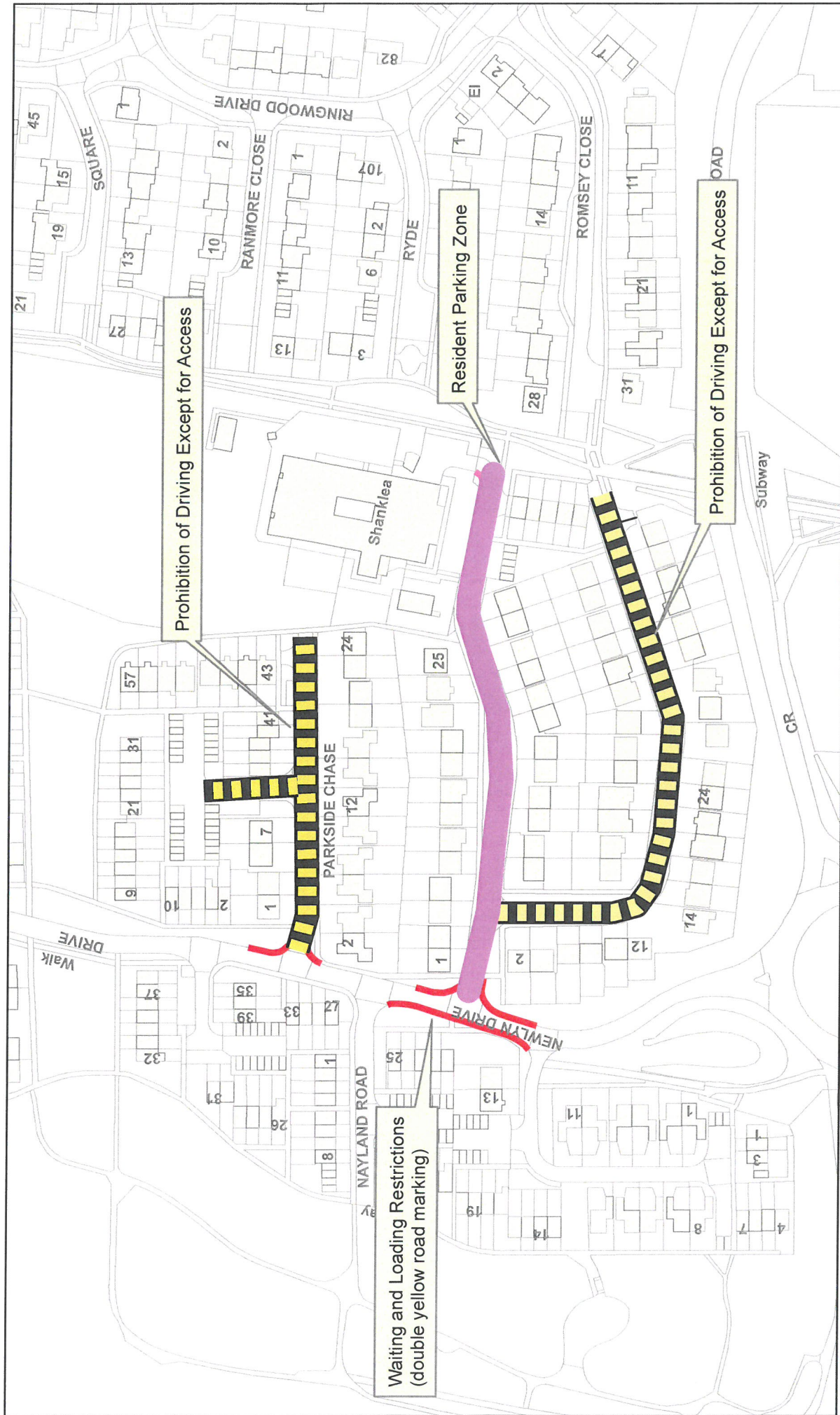
STATEMENT OF THE COUNCIL'S REASONS FOR MAKING THE ORDER

The general effect of this Experimental Order will be to introduce Resident Parking Zone in Nairn Road Cramlington, together with associated No Waiting at Any Time Restrictions in the Nairn Road area of Cramlington on an experimental basis

The reasons for introducing this by way of an Experimental Order are to assess the impact on parking and traffic flows with the introduction of a Resident Parking Zone in Nairn Road Cramlington i.e. potential displacement of parking and so on.

Consideration will be given after a trial period as to whether or not the provisions of this Experimental Order should be made permanent. Currently, at the end of the trial period, the Council intends to consider making an order which will continue in force indefinitely having the same effect as the Experimental Traffic Regulation Order.

The effects of this Order will be reviewed after 6 months



Northumberland

Northumberland County Council

Northumberland County Council
County Hall
Morpeth
Northumberland NE61 2EF Tel: 01670 533000

Network Management Information System

This map is reproduced from Ordnance Survey material with the permission of Ordnance Survey on behalf of the Controller of Her Majesty's Stationary Office Crown Copyright. Unauthorised reproduction infringes Crown Copyright and may lead to prosecution or civil proceedings. License no. 100049048 (2009).

Title:
Experimental Traffic Regulation Orders
in the Nairn Road Area of Cramlington

Dm:
Date:
Scale:
July 2015

**FOR REFERENCE PURPOSES ONLY
NOT TO BE REPRODUCED**