

**NEATH PORT TALBOT COUNTY BOROUGH COUNCIL**  
**CYNGOR BWRDEISTREF SIROL CASTELL-NEDD PORT TALBOT**

**(MEADOW ROAD, NEATH)**  
**(REVOCATION) (PROHIBITION OF WAITING, LOADING**  
**OR UNLOADING AT ANY TIME) AND (PROHIBITION OF ENTRY)**

**ORDER 2022**

**NOTICE** is given that the Council on the 6<sup>th</sup> December 2022 made an Order in pursuance of its powers as contained in Sections 1, 2 and Part IV of Schedule 9 of the Road Traffic Regulation Act 1984 the effect of which is as set out in the Schedule below.

A copy of the draft Order, plan and statement of reasons can be inspected on the Council's Internet Website <https://www.npt.gov.uk/traffic-regulation-orders-tros>.

The Order will come into force on the 12<sup>th</sup> December 2022.

If any person wishes to question the validity of the Order or of any of its powers on the grounds that it or they are not within the powers conferred by the Act or that any requirements of the Act or of any instrument made under the Act has not been complied with, that person may, within 6 weeks from the date on which the Order is made, apply for that purpose to the High Court.

**SCHEDULES**

**Schedule 1 – Revocation of One Way Traffic Regulation Order**

**1.1 Meadow Road, Neath**

From a point approximately 184 metres north east of its junction with the eastern kerbline of Gardners Lane (where Meadow Road meets with Meadow Road) to a point approximately 45 metres east thereof

The above mentioned section of Meadow Road will now revert back to two-way traffic

## **Schedule 2 – Revocation of No Entry Traffic Regulation Order**

### **2.1 Meadow Road, Neath**

At a point approximately 184 metres north east of its junction with the eastern kerbline of Gardners Lane (where Meadow Road meets with Meadow Road).

## **Schedule 3 – Prohibition of Waiting, Loading and Unloading at any Time**

### **3.1 Meadow Road, Neath (North West Side)**

From a point approximately 168 metres north east of its junction with the eastern kerbline of Gardners Lane to a point approximately 194 metres north east of its junction with the eastern kerbline of Gardners Lane, a distance of approximately 26 metres in a north easterly direction.

### **3.2 Meadow Road, Neath (North East Side)**

From a point approximately 168 metres north east of its junction with the eastern kerbline of Gardners Lane to a point approximately 194 metres north east of its junction with the eastern kerbline of Gardners Lane, a distance of approximately 26 metres in a north easterly direction

### **3.3 Meadow Road, Neath (North Side)**

From a point approximately 184 metres north east of its junction with the eastern kerbline of Gardners Lane (where Meadow Road meets with Meadow Road) to a point approximately 47 metres east thereof.

### **3.4 Meadow Road, Neath (South Side)**

From a point approximately 184 metres north east of its junction with the eastern kerbline of Gardners Lane (where Meadow Road meets with Meadow Road) to a point approximately 49 metres east thereof.

## **Schedule 4 – Prohibition Of Entry**

### **4.1 Meadow Road, Neath**

At a point approximately 45 metres east, of a point, approximately 184 metres north east of its junction with the north eastern kerbline of Gardners Lane (where Meadow Road meets with Meadow Road).

**DATED 9<sup>th</sup> DECEMBER 2022**

**M C GRIFFITHS**

**HEAD OF LEGAL & DEMOCRATIC SERVICES**

**NEATH PORT TALBOT COUNTY BOROUGH COUNCIL**  
**CYNGOR BWRDEISTREF SIROL CASTELL-NEDD PORT TALBOT**

**(MEADOW ROAD, NEATH)**  
**(REVOCATION) (PROHIBITION OF WAITING, LOADING**  
**OR UNLOADING AT ANY TIME) AND (PROHIBITION OF ENTRY)**

**ORDER 2022**

The Neath Port Talbot County Borough Council in exercise of their powers under 1, 2 and Part IV of Schedule 9 of the Road Traffic Regulation Act 1984 (hereinafter referred to as “the Act of 1984”) and of all other powers them enabling and after consultation with the Chief Officer of Police in accordance with Part III of Schedule 9 of the Act of 1984 hereby make the following Order: -

1. This Order shall come into force on the 12<sup>th</sup> day of December 2022 and may be cited as the “Neath Port Talbot County Borough Council (Meadow Road, Neath) (Revocation) (Prohibition of Waiting, Loading and Unloading At Any Time) and (Prohibition of Entry) Order 2022”.
2. (1) In this Order –  
  
“Public Service Vehicle” shall have the same meaning as in Section 1 of the Public Passenger Vehicles Act 1981 and “local service” shall have the same meaning as in Section 1 of the Transport Act 1985;  
  
“Universal Providers” means those operators of postal services who are licensed to provide all or part of a Universal Postal Service under the provisions contained in the Postal Services Act 2000.  
  
(2) Except where otherwise stated, any reference in this Order to a numbered Article or Schedule is a reference to the Article or Schedule bearing that number in this Order.  
  
(3) The Interpretation Act 1978 shall apply for the interpretation of this Order as it applies for the Interpretation of an Act of Parliament.
3. Any existing One Way Orders are hereby revoked only in so far as they relate to the sides and lengths of roads set out in Schedule 1 of this Order.
4. Any existing No Entry Orders are hereby revoked only in so far as they relate to the sides and lengths of roads set out in Schedule 2 of this Order.
5. Save as provided in Articles 7 and 8 of this Order, no person except on the direction of a Police Constable in uniform or a Parking Attendant shall cause or permit any vehicle to wait, load or unload at any time on the lengths of sides of roads set out in the Schedule 3 of this Order.

6. No person shall cause or permit any vehicle to enter the road specified in Schedule 4 of this Order at the point set out in that Schedule.
7. Nothing in Article 5 shall render it unlawful to cause or permit any vehicle to wait on the length and side of road specified therein for so long as may be necessary to enable:-
  - (A) A person to board or alight from a vehicle;
  - (B) The vehicle, if it cannot conveniently be used for such purpose in any other road, to be used in connection with any of the following operations, namely: -
    - (i) Building, industrial or demolition operations;
    - (ii) The removal of any obstruction to traffic;
    - (iii) The laying, erection, alteration or repair in or on land adjacent to the said lengths of sides of road of any sewer or any main pipe or apparatus for the supply of gas, water or electricity or any telecommunications apparatus defined in the Telecommunications Act 1984;
  - (C) The vehicle, if it cannot conveniently be used for such purpose in any other road, to be used in the service of a Local Authority or a Water Authority in pursuance of statutory powers or duties;
  - (D) The vehicle to be used by a Universal Service Provider for the purpose of delivering or collecting postal packets;
  - (E) Public Service Vehicles operating a local service when waiting at an authorised bus stop to set down or pick up passengers, or to school buses;
  - (F) The vehicle to take in petrol, oil, water or air from any garage situated on or adjacent to the said length of road.
8. The prohibitions imposed by Article 5 shall not apply to Police, Fire, Ambulance or other Emergency Service vehicles or to Local Authority vehicles when in pursuance of statutory duties or powers.

## **SCHEDULES**

### **Schedule 1 – Revocation of One Way Traffic Regulation Order**

#### **1.1 Meadow Road, Neath**

From a point approximately 184 metres north east of its junction with the eastern kerbline of Gardners Lane (where Meadow Road meets with Meadow Road) to a point approximately 45 metres east thereof

The above mentioned section of Meadow Road will now revert back to two-way traffic

## **Schedule 2 – Revocation of No Entry Traffic Regulation Order**

### **2.1 Meadow Road, Neath**

At a point approximately 184 metres north east of its junction with the eastern kerbline of Gardners Lane (where Meadow Road meets with Meadow Road).

## **Schedule 3 – Prohibition of Waiting, Loading and Unloading at any Time**

### **3.1 Meadow Road, Neath (North West Side)**

From a point approximately 168 metres north east of its junction with the eastern kerbline of Gardners Lane to a point approximately 194 metres north east of its junction with the eastern kerbline of Gardners Lane, a distance of approximately 26 metres in a north easterly direction.

### **3.2 Meadow Road, Neath (North East Side)**

From a point approximately 168 metres north east of its junction with the eastern kerbline of Gardners Lane to a point approximately 194 metres north east of its junction with the eastern kerbline of Gardners Lane, a distance of approximately 26 metres in a north easterly direction

### **3.3 Meadow Road, Neath (North Side)**

From a point approximately 184 metres north east of its junction with the eastern kerbline of Gardners Lane (where Meadow Road meets with Meadow Road) to a point approximately 47 metres east thereof.

### **3.4 Meadow Road, Neath (South Side)**

From a point approximately 184 metres north east of its junction with the eastern kerbline of Gardners Lane (where Meadow Road meets with Meadow Road) to a point approximately 49 metres east thereof.

## **Schedule 4 – Prohibition Of Entry**

### **4.1 Meadow Road, Neath**

At a point approximately 45 metres east, of a point, approximately 184 metres north east of its junction with the north eastern kerbline of Gardners Lane (where Meadow Road meets with Meadow Road).

THE COMMON SEAL  
OF THE COUNCIL  
was hereunto affixed on the  
6<sup>th</sup> day of December 2022  
in the presence of: -

)  
)  
)  
)  
)



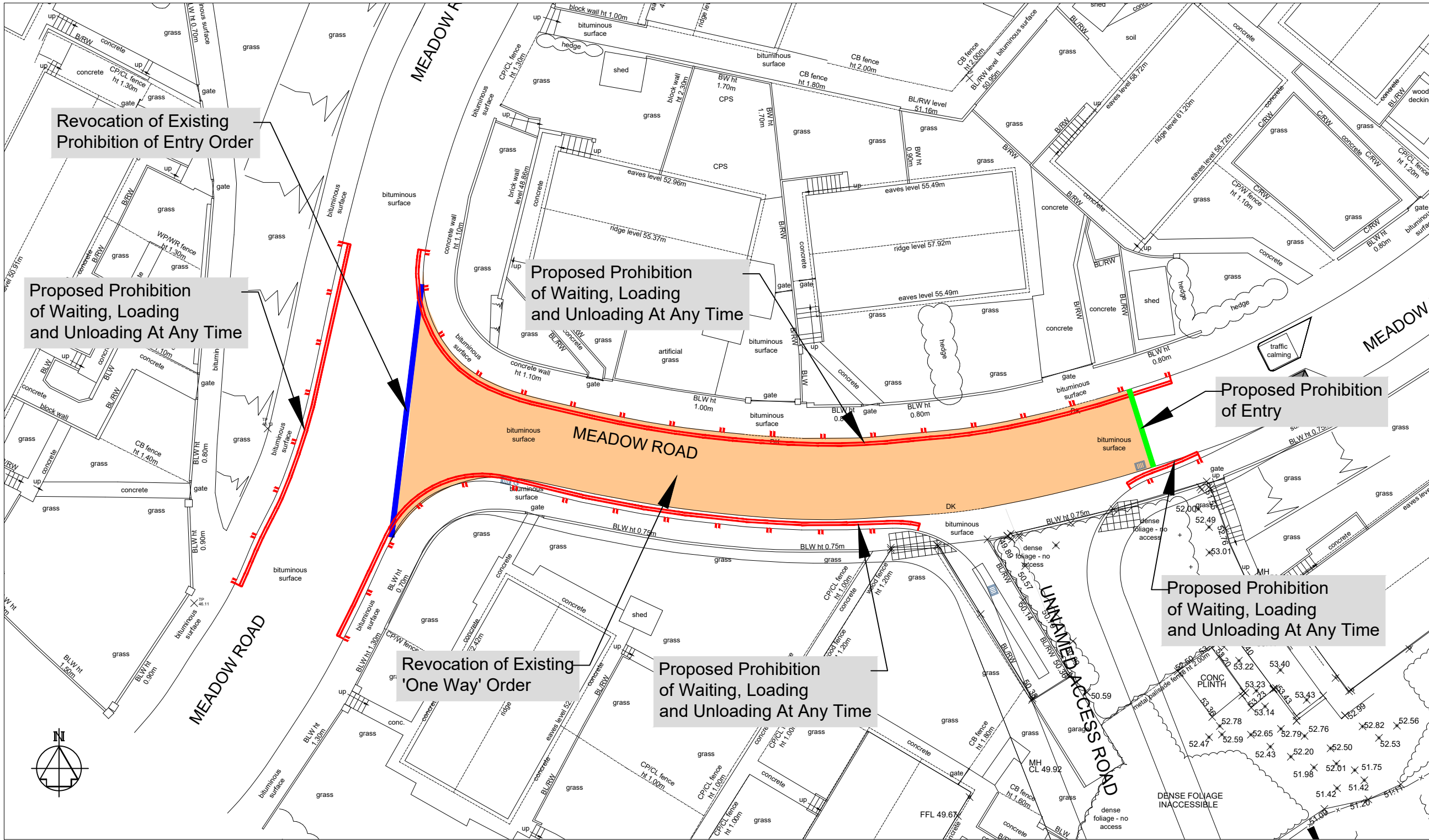
11077

**PROPER OFFICER**



Dwg. No.

Job Title



TRAFFIC REGULATION ORDER LAYOUT PLAN - SCALE 1:250

FOR OVERALL SITE LAYOUT PLAN - REFER TO DRAWING NPT-MRS278-TRO-2

NOTES

1. All dimensions are in millimetres unless otherwise stated.

KEY:-

- Proposed Prohibition of Waiting, Loading and Unloading At Any Time
- Proposed Prohibition of Entry
- Revocation of Existing 'One Way' Order
- Revocation of Existing Prohibition of Entry Order

'APPENDIX A'

Rev	Details	Dr	Ch	Ap	Date

Client



Cyngor Castell-nedd Port Talbot  
Neath Port Talbot Council

ENGINEERING AND TRANSPORT

NICOLA PEARCE BSC (Hons), Dip TP, MRTPI  
DIRECTOR OF ENVIRONMENT AND REGENERATION

THE QUAYS, BRUNEL WAY  
BAGLAN ENERGY PARK  
NEATH SA11 2GG

Job Title

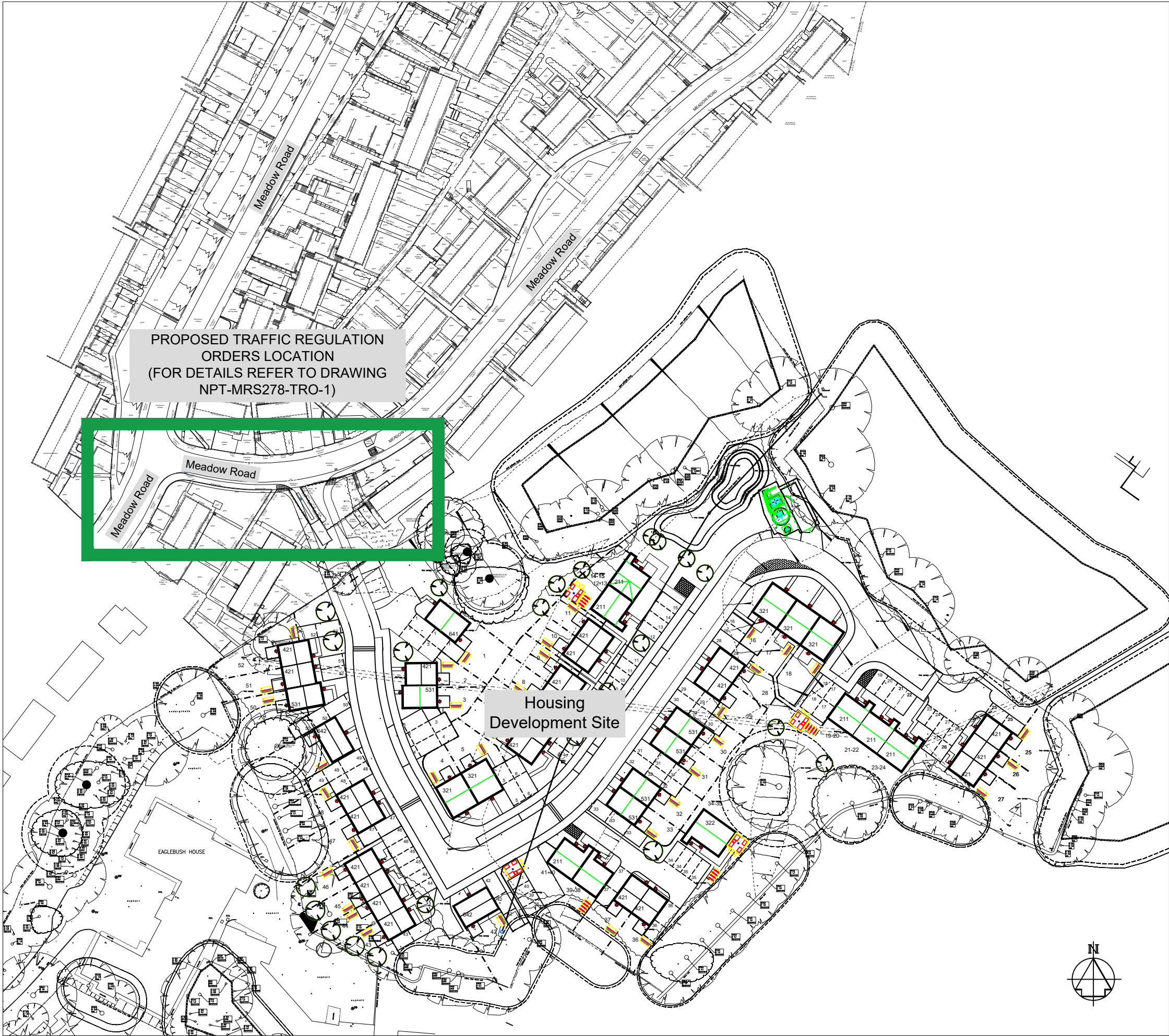
HOUSING DEVELOPMENT ON LAND ADJACENT TO MEADOW ROAD, NEATH

PROPOSED TRAFFIC REGULATION ORDERS

File No.		Financial Code No.			
Drawn	RLJ	Checked	MCB	Approved	HIH
Date	MAY'22	Date	MAY'22	Date	MAY'22
Scales	Not To Scale		Status	PRELIM	
Drawing No.		NPT-MRS278-TRO-1			

Dwg. No.

Job Title



SITE LOCATION PLAN - SCALE 1:1000

NOTES

1. All dimensions are in millimetres unless otherwise stated.

KEY:-

Location of Proposed Traffic Regulation Orders for New Development

'APPENDIX B'

Rev	Details	Dr	Ch	Ap	Date
-----	---------	----	----	----	------

Client



ENGINEERING AND TRANSPORT

NICOLA PEARCE BSC (Hons), Dip TP, MRTPI  
DIRECTOR OF ENVIRONMENT AND REGENERATION  
THE QUAYS, BRUNEL WAY  
BAGLAN ENERGY PARK  
NEATH SA11 2GG

Job Title

HOUSING DEVELOPMENT ON LAND  
ADJACENT TO MEADOW ROAD, NEATH

LOCATION OF PROPOSED  
TRAFFIC REGULATION ORDERS

File No.	Financial Code No.			
Drawn	RLJ	Checked	MCB	Approved
Date	MAY'22	Date	MAY'22	Date
Scales	Not To Scale	Status	PRELIM	

Drawing No. NPT-MRS278-TRO-2