

NEATH PORT TALBOT COUNTY BOROUGH COUNCIL
CYNGOR BWRDEISTREF SIROL CASTELL-NEDD PORT TALBOT

(MARINERS QUAY, THE PRINCESS MARGARET WAY AND VICTORIA ROAD)
(REVOCATION) (PROHIBITION OF WAITING, LOADING
AND UNLOADING AT ANY TIME)

ORDER 2022

The Neath Port Talbot County Borough Council in exercise of their powers under Sections 1 and 2 of the Road Traffic Regulation Act 1984 (hereinafter referred to as “the Act of 1984”) and of all other powers them enabling and after consultation with the Chief Officer of Police in accordance with Part III of Schedule 9 of the Act of 1984 hereby make the following Order:-

1. This Order shall come into force on the 25th day of November 2022 and may be cited as the “Neath Port Talbot County Borough Council (Mariners Quay, The Princess Margaret Way and Victoria Road) (Revocation) (Prohibition of Waiting Loading and Unloading At Any Time) Order 2022”.

2. (1) In this Order –

“Disabled Person’s Vehicle” has the same meaning as in The Local Authorities’ Traffic Orders (Exemptions for Disabled Persons) (Wales) (Amended) Regulations 2000;

“Disabled Persons Badge” has the same meaning as in The Disabled Persons (Badges for Motor Vehicles) (Wales) (Amended) Regulations 2000;

“Parking Disc” means a parking disc issued by a Local Authority, capable of showing the quarter hour period during which a period of waiting begins;

“Relevant Position” has the same meaning as in The Disabled Persons (Badges for Motor Vehicles) (Wales) (Amended) Regulations 2000;

“Public Services Vehicle” shall have the same meaning as in Section 1 of the Public Passenger Vehicles Act 1981 and “local service” shall have the same meaning as in Section 1 of the Transport Act 1985;

“Universal Service Providers” means those operators of postal services who are licensed to provide all or part of a Universal Postal Service under the provisions contained in the Postal Services Act 2000.

(2) Except where otherwise stated, any reference in this Order to a numbered Article or Schedule is a reference to the Article or Schedule bearing that number in this Order.

(3) The Interpretation Act 1978 shall apply for the interpretation of this Order as it applies for the Interpretation of an Act of Parliament.

3. Any existing Orders are hereby revoked only in so far as they relate to the side and length of road set out in the Schedule of this Order.
4. Save as provided in Articles 5 and 6 of this Order, no person except on the direction of a Police Constable in uniform or a Parking Attendant shall cause or permit any vehicle to wait, load or unload at any time on the lengths of sides of roads set out in the Schedule of this Order.
5. Nothing in Article 4 of this Order shall render it unlawful to cause or permit any vehicle to wait on the lengths of sides of roads specified therein for so long as may be necessary to enable: -
 - (A) A person to board or alight from a vehicle;
 - (B) The vehicle, if it cannot conveniently be used for such purpose in any other road, to be used in connection with any of the following operations, namely: -
 - (i) Building, industrial or demolition operations;
 - (ii) The removal of any obstruction to traffic;
 - (iii) The laying, erection, alteration or repair in or on land adjacent to the said lengths of sides of road of any sewer or any main pipe or apparatus for the supply of gas, water or electricity or any telecommunications apparatus defined in the Telecommunications Act 1984;
 - (C) The vehicle, if it cannot conveniently be used for such purpose in any other road, to be used in the service of a Local Authority or a Water Authority in pursuance of statutory powers or duties;
 - (D) The vehicle to be used by a Universal Service Provider for the purpose of delivering or collecting postal packets;
 - (E) Public Services Vehicles operating a local service when waiting at an authorised bus stop to set down or pick up passengers, or to school buses;
 - (F) The vehicle to take in petrol, oil, water or air from any garage situated on or adjacent to the said length of road.
6. The prohibitions imposed by Article 4 of this Order shall not apply to Police, Fire, Ambulance or other Emergency Service vehicles or to Local Authority vehicles when in pursuance of statutory duties or powers.

SCHEDULE

Schedule 1 - Prohibition of Waiting, Loading and Unloading at Any Time

1.1 Mariners Quay 1, Port Talbot (North East Side)

From its junction with the north eastern kerbline of Victoria Road to its junction with the north western kerbline of Mariners Quay 2, a distance of approximately 144 metres.

1.2 Mariners Quay 1, Port Talbot (South East Side)

From its junction with the north eastern kerbline of Victoria Road to a point approximately 15 metres south east thereof.

- 1.3 Mariners Quay 1, Port Talbot (South East Side)**
From its junction with the north western kerbline of Mariners Quay 2 to a point approximately 10 metres north west thereof.
- 1.4 Mariners Quay 2, Port Talbot (North West Side)**
From its junction with the northern kerbline of Mariners Quay 1 to a point approximately 13 metres north east thereof.
- 1.5 Mariners Quay 2, Port Talbot (North West Side)**
From its junction with the southern kerbline of Mariners Quay 1 to a point approximately 10 metres south west thereof
- 1.6 Mariners Quay 2, Port Talbot (North West Side)**
From its junction with the north eastern kerbline of Mariners Quay 3 to a point approximately 10 metres north east thereof.
- 1.7 Mariners Quay 2, Port Talbot (North East Side)**
From its junction with the north eastern kerbline of Mariners Quay 3 to a point approximately 10 metres north east thereof.
- 1.8 Mariners Quay 3, Port Talbot (North West Side)**
From a point opposite and in line with the north eastern kerbline of Mariners Quay 2 to a point approximately 30 metres south east thereof.
- 1.9 Mariners Quay 3, Port Talbot (North West Side)**
From a point opposite and in line with the north eastern kerbline of Mariners Quay 2 to a point approximately 33 metres north west thereof.
- 1.10 Mariners Quay 3, Port Talbot (North East Side)**
From its junction with the north eastern kerbline of Mariners Quay 2 to a point approximately 30 metres south east thereof.
- 1.11 Mariners Quay 3, Port Talbot (North East Side)**
From its junction with the north western kerbline of Mariners Quay 2 to a point approximately 27 metres north west thereof.
- 1.12 The Princess Margaret Way, Port Talbot (North East Side)**
From a point approximately 88 metres north west of its junction with the north western kerbline of Victoria Road to a point approximately 118 metres north west of its junction with the north western kerbline of Victoria Road, a distance of approximately 30 metres.
- 1.13 The Princess Margaret Way, Port Talbot (North East Side)**
From its junction with the north western kerbline of Victoria Road to a point approximately 41 metres in a north west thereof.
- 1.14 The Princess Margaret Way, Port Talbot (South West Side)**
From its junction with the south eastern kerbline of Jersey Quay to its junction with the south western kerbline of Victoria Road, a distance of approximately 72 metres.

- 1.15 The Princess Margaret Way, Port Talbot (South West Side)**
From its junction with the north western kerbline of Jersey Quay to a point approximately 43 metres north west thereof.
- 1.16 Victoria Road, Port Talbot (North West Side)**
From its junction with the north eastern kerbline of The Princess Margaret Way to a point approximately 16 metres north east thereof
- 1.17 Victoria Road, Port Talbot (South West Side)**
From its junction with the southern western kerbline of The Princess Margaret Way to a point approximately 88 metres south west thereof.

For clarification this includes the turning head/ cul-de-sac end at the southern end of Victoria Road.

- 1.18 Victoria Road, Port Talbot (North East Side)**
From its junction with the northern kerbline of Mariners Quay 1 to a point approximately 72 metres north east thereof.

For clarification this includes the roundabout junction between Victoria Road and The Princess Margaret Way.

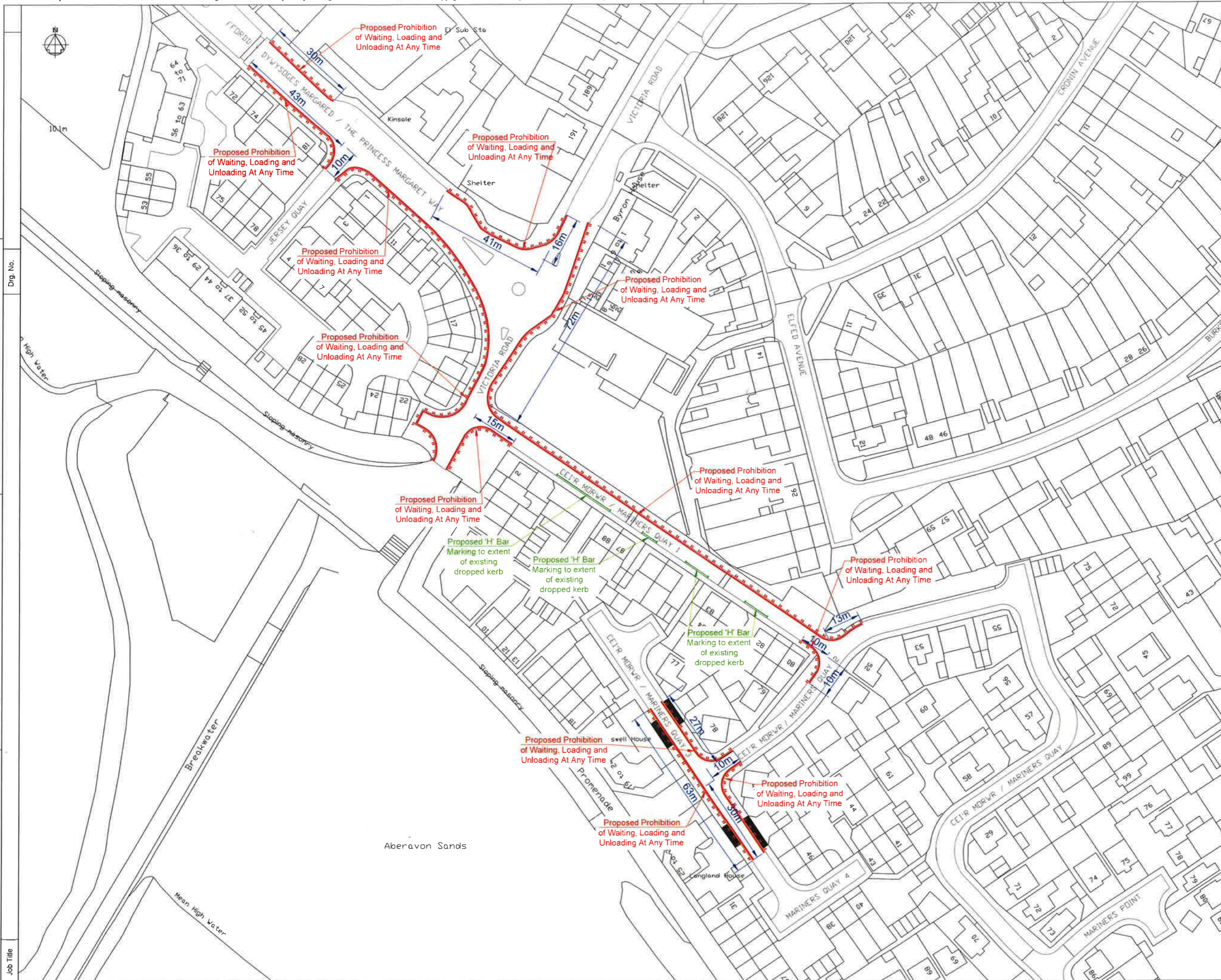
- 1.19 Victoria Road, Port Talbot (North East Side)**
From its junction with the southern kerbline of Mariners Quay 1 to a point approximately 20 metres south west thereof.

THE COMMON SEAL OF)
 THE COUNCIL WAS)
 HEREUNTO AFFIXED THIS)
 17th DAY OF NOVEMBER 2022)
 IN THE PRESENCE OF: -)






M.C.R. [unclear]

PROPER OFFICER




NOTES

1. All dimensions are in millimetres unless otherwise stated.

- KEY:-
-  Proposed Prohibition of Waiting, Loading and Unloading At Any Time
 -  Proposed 'H' Bar Marking
 -  Existing Dropped Vehicle Crossover

Rev	Details	Dr	Ch	Ap	Date
A	Proposed 'Prohibition of Waiting At Any Time' removed from proposals as a result of objections received				RLJMCEHHI SEPT22

 **Cyngor Castell-nedd Port Talbot**
Neath Port Talbot Council

ENGINEERING AND TRANSPORT
NICOLA PEARCE BSc (Hons), Dip TP, MRTPI
DIRECTOR OF ENVIRONMENT AND REGENERATION
THE QUAYS, BRUNEL WAY
BAGLAN ENERGY PARK
NEATH SA11 2GS

Job Title
**MARINERS QUAY
PORT TALBOT
PROPOSED TRAFFIC REGULATION
ORDERS**

File No.	Financial Code No.				
Drawn	RLJ	Checked	MCB	Approved	HHH
Date	JUL'22	Date	JUL'22	Date	JUL'22
Scales	NTS	Status	CONSTRUCTION		
Drawing No.	C30320E_001_Mariners TRO				A