

NEATH PORT TALBOT COUNTY BOROUGH COUNCIL
CYNGOR BWRDEISTREF SIROL CASTELL-NEDD PORT TALBOT

(ABERAVON SEAFRONT)

(REVOCATION) (PROHIBITION OF WAITING, LOADING AND UNLOADING AT ANY TIME) (NO STOPPING EXCEPT BUSES)

(LIMITED WAITING) AND (DISABLED BADGE HOLDERS)

ORDER 2018

The Neath Port Talbot County Borough Council in exercise of its powers under Sections 1, 2, 32, 35 and Part IV of Schedule 9 of the Road Traffic Regulation Act 1984 (hereinafter referred to as “the Act of 1984”) and of all other powers then enabling and after consultation with the Chief Officer of Police in accordance with Part III of Schedule 9 of the Act of 1984 hereby make the following Order:-

1. This Order shall come into operation on the 19th day of May 2018 and may be cited as the “Neath Port Talbot County Borough Council (Aberavon Seafront) (Revocation) (Prohibition of Waiting, Loading and Unloading at any Time) (No Stopping Except Buses) (Limited Waiting) and (Disabled Badge Holders) Order 2018”.
2. (1) In this Order –
 - “Disabled Person’s Vehicle” has the same meaning as in The Local Authorities’ Traffic Orders (Exemptions for Disabled Persons) (Wales) Regulations 2000;
 - “Disabled Person’s Badge” has the same meaning as in The Disabled Person’s (Badges for Motor Vehicles) (Wales) (Amended) Regulations 2000;
 - “Relevant Position” has the same meaning as in the Disabled Persons (Badges for Motor Vehicles) (Wales) (Amended) Regulations 2000”;
 - “Public Service Vehicle” shall have the same meaning as in Section 1 of the Public Passenger Vehicles Act 1981 and “local service” shall have the same meaning as in Section 1 of the Transport Act 1985;
 - “Universal Providers” means those operators of postal services who are licensed to provide all or part of a Universal Postal Service under the provisions contained in the Postal Services Act 2000.
 - “Bus” means a motor vehicle constructed or adapted to carry more than 8 passengers (exclusive of the driver) and Public Service Vehicles not so constructed or adapted used for the provision of local services.
- (2) Except where otherwise stated, any reference in this Order to a numbered Article or Schedule is a reference to the Article or Schedule bearing that number in this Order.
- (3) The Interpretation Act 1978 shall apply for the interpretation of this Order as it applies for the Interpretation of an Act of Parliament.

3. Any existing Orders are hereby revoked only in so far as they relate to the sides and lengths of roads set out in Schedules of this Order.
4. Save as provided in Articles 6 and 7 of this Order, no person except on the direction of a Police Constable in uniform or a Parking Attendant shall cause or permit any vehicle to wait, load or unload at any time on the lengths of sides of roads set out in the Schedule 2 of this Order.
5. Save as provided in Articles 6 and 7 of this Order no vehicle shall stop at any time on the sides and lengths of roads specified in Schedule 3 to this Order other than a bus.
6. Nothing in Article 4, 5, 8 and 11 shall render it unlawful to cause or permit any vehicle to wait on the lengths of roads specified therein for so long as may be necessary to enable: -
 - (A) A person to board or alight from a vehicle;
 - (B) The vehicle, if it cannot conveniently be used for such purpose in any other road, to be used in connection with any of the following operations, namely: -
 - (i) Building, industrial or demolition operations;
 - (ii) The removal of any obstruction to traffic;
 - (iii) The laying, erection, alteration or repair in or on land adjacent to the said lengths of sides of road of any sewer or any main pipe or apparatus for the supply of gas, water or electricity or any telecommunications apparatus defined in the Telecommunications Act 1984;
 - (C) The vehicle, if it cannot conveniently be used for such purpose in any other road, to be used in the service of a Local Authority or a Water Authority in pursuance of statutory powers or duties;
 - (D) The vehicle to be used by a Universal Service Provider for the purpose of delivering or collecting postal packets;
 - (E) Public Service Vehicles operating a local service when waiting at an authorised bus stop to set down or pick up passengers, or to school buses;
 - (F) The vehicle to take in petrol, oil, water or air from any garage situated on or adjacent to the said length of road.
7. The prohibitions imposed by Article 4, 5, 8 and 11 shall not apply to Police, Fire, Ambulance or other Emergency Service vehicles or to Local Authority vehicles when in pursuance of statutory duties or powers.

8. Save as provided in Articles 6, 7, 9 and 10 of this Order, no person except on the direction of a Police Constable in uniform or a Parking Attendant shall cause or permit any vehicle to wait for more than 2 hours or to return within 2 hours to the same length of side of road on which that period of waiting began as set out in Schedule 4 to this Order.
9. Nothing in Article 8 of this Order shall render it unlawful to cause or permit a disabled person's vehicle which displays in the relevant position a disabled person's badge to wait on the lengths of sides of road referred to in the said Article.
10. Nothing in Article 8 of this Order shall render it unlawful to cause or permit any vehicle to wait on the length of side of road specified therein for so long as may be necessary to enable goods to be loaded and unloaded from the vehicle.
11. Save as provided in Articles 6 and 7 of this Order, no person except on the direction of a Police Constable in uniform or a Parking Attendant shall cause or permit any vehicle to park in the Disabled Parking Place designated in Schedule 5 to this Order unless that vehicle is a Disabled Persons Vehicle which displays in the relevant position a Disabled Persons Badge.

Schedule 1 – Revocation

- 1.1 Any existing Orders are hereby revoked only in so far as they relate to the sides and lengths of roads set out in Schedules of this Order.

Schedule 2 – Prohibition of Waiting, Loading or Unloading At Any Time Order

- 2.1 **Golden Avenue, Sandfields (West Side)**
From a point approximately 6 metres south west of its junction with Auburn Avenue for a distance of approximately 50 metres in a south westerly direction.
- 2.2 **Golden Avenue, Sandfields (East Side)**
From a point approximately 8 metres north of its junction with Tir Morfa Road for a distance of approximately 70 metres in a south westerly direction.
- 2.3 **Scarlet Avenue, Sandfields (North East Side)**
From its junction with Golden Avenue for a distance of approximately 22 metres in a north westerly direction.
- 2.4 **Scarlet Avenue, Sandfields (South West Side)**
From its junction with The Princess Margaret Way for a distance of approximately 55 metres in a north westerly direction.
- 2.5 **Tir Morfa Road, Sandfields (Both Sides)**
From its junction with Golden Avenue for a distance of approximately 12 metres in an easterly direction.
- 2.6 **The Princess Margaret Way (South West Side)**
From its junction with Scarlet Avenue for a distance of approximately 168 metres in a south then south easterly direction.

- 2.7 **The Princess Margaret Way (South West Side)**
From a point approximately 214 metres south east of its junction with Scarlet Avenue for a distance of approximately 80 metres in a south easterly direction.
- 2.8 **The Princess Margaret Way (South West Side)**
From its junction with the western exit of Car Park 1 for a distance of approximately 61 metres in a north westerly direction.
- 2.9 **The Princess Margaret Way (South West Side)**
From its junction with the western exit of Car Park 1 to its junction with the eastern entrance of Car Park 1, a distance of approximately 180 metres.
- 2.10 **The Princess Margaret Way (South West Side)**
From its junction with the eastern entrance to Car Park 1 for a distance of approximately 14 metres in a south easterly direction.
- 2.11 **The Princess Margaret Way (South West Side)**
From a point approximately 44 metres south east of its junction with the eastern entrance of Car Park 1 for a distance of approximately 135 metres in a south easterly direction.
- 2.12 **The Princess Margaret Way (South West Side)**
From its junction with the western exit of Car Park 2 to its junction with the eastern entrance of Car Park 2, a distance of approximately 94 metres.
- 2.13 **The Princess Margaret Way (South West Side)**
From its junction with the eastern entrance of Car Park 2 for a distance of approximately 54 metres in a south easterly then southerly direction.
- 2.14 **The Princess Margaret Way (South West Side)**
From its junction with the Beach Access Road for a distance of approximately 171 metres in an easterly then south easterly direction.
- 2.15 **The Princess Margaret Way (South West Side)**
From a point approximately 560 metres north west of its junction with Victoria Road for a distance of approximately 67 metres in a south easterly direction.
- 2.16 **The Princess Margaret Way (South West Side)**
From a point 448 metres north west of its junction with Victoria Road for a distance of approximately 6 metres in a south easterly direction.
- 2.17 **The Princess Margaret Way (South West Side)**
From a point approximately 358 metres north west of its junction with Victoria Road for a distance of approximately 82 metres in a south easterly direction.
- 2.18 **The Princess Margaret Way, Sandfields (North East Side)**
From a point approximately 104 metres south of its junction with Tir Morfa Road for a distance of approximately 250 metres in a south easterly direction.

- 2.19 **The Princess Margaret Way, Sandfields (North East Side)**
From its junction with Pier Way for a distance of approximately 126 metres in a north westerly direction.
- 2.20 **The Princess Margaret Way, Sandfields (North East Side)**
From its junction with Pier Way to its junction with Marine Drive, a distance of approximately 174 metres.
- 2.21 **The Princess Margaret Way, Sandfields (North East Side)**
From its junction with Marine Drive for a distance of approximately 25 metres in a south easterly direction.
- 2.22 **The Princess Margaret Way, Sandfields (North East Side)**
From a point approximately 58 metres south east of its junction with Marine Drive for a distance of approximately 60 metres in a south easterly direction.
- 2.23 **The Princess Margaret Way, Sandfields (North East Side)**
From a point approximately 167 metres south east of its junction with Marine Drive for a distance of approximately 71 metres in a south easterly direction.
- 2.24 **The Princess Margaret Way, Sandfields (North East Side)**
From a point approximately 41 metres north west of its junction with Western Avenue for a distance of approximately 60 metres in a south east then north easterly direction.
- 2.25 **The Princess Margaret Way, Sandfields (North East Side)**
From its junction with Western Avenue to its junction with Dalton Road, a distance of approximately 20 metres.
- 2.26 **The Princess Margaret Way, Sandfields (North East Side)**
From its junction of Dalton Road for a distance of approximately 48 metres in a south then south easterly direction.
- 2.27 **The Princess Margaret Way, Sandfields (North East Side)**
From a point approximately 106 metres north west of its junction with the Hotel Access Road for a distance of approximately 6 metres in a south easterly direction.
- 2.28 **The Princess Margaret Way, Sandfields (North East Side)**
From its junction with the Hotel Access Road for a distance of approximately 16 metres in a north westerly direction.
- 2.29 **The Princess Margaret Way, Sandfields (North East Side)**
From its junction with the Hotel Access Road for a distance of approximately 52 metres in a south easterly direction.
- 2.30 **The Princess Margaret Way, Sandfields (North East Side)**
From its junction with the Leisure Centre Access Road for a distance of approximately 118 metres in a south easterly direction.

- 2.31 **The Princess Margaret Way, Sandfields (North East Side)**
From its junction with the Cinema Access Road for a distance of approximately 42 metres in a north westerly direction.
- 2.32 **The Princess Margaret Way, Sandfields (North East Side)**
From its junction with the Cinema Access Road for a distance of approximately 69 metres in a south easterly direction.
- 2.33 **The Princess Margaret Way, Sandfields (North East Side)**
From its junction with Channel View for a distance of approximately 30 metres in a north westerly direction.
- 2.34 **The Princess Margaret Way, Sandfields (North East Side)**
From its junction with Channel View for a distance of approximately 52 metres in a south easterly direction.
- 2.35 **Pier Way, Sandfields (Both Sides)**
From its junction with The Princess Margaret Way for a distance of approximately 40 metres in a north easterly direction.
- 2.36 **Marine Drive, Sandfields (Both Sides)**
From its junction with The Princess Margaret Way for a distance of approximately 20 metres in a north easterly direction.
- 2.37 **Bay View Car Park, Sandfields (Both Sides)**
From its junction with The Princess Margaret Way for a distance of approximately 15 metres in a north easterly direction.
- 2.38 **Western Avenue, Sandfields (Both Sides)**
From its junction with The Princess Margaret Way for a distance of approximately 28 metres in a northerly direction.
- 2.39 **Dalton Road, Sandfields (North Side)**
From its junction with The Princess Margaret Way for a distance of approximately 54 metres in an easterly direction.
- 2.40 **Dalton Road, Sandfields (South Side)**
From its junction with The Princess Margaret Way for a distance of approximately 67 metres in an easterly direction.
- 2.41 **Hotel Access Road, Sandfields (Both Sides)**
From its junction with The Princess Margaret Way for a distance of approximately 12 metres in a north easterly direction.
- 2.42 **Leisure Centre Access Road, Sandfields (Both Sides)**
From its junction with The Princess Margaret Way for a distance of approximately 17 metres in a north easterly direction.

- 2.43 **Cinema Access Road, Sandfields (Both Sides)**
From its junction with The Princess Margaret Way for a distance of approximately 22 metres in a north easterly direction.
- 2.44 **Channel View, Sandfields (Both Sides)**
From its junction with The Princess Margaret Way for a distance of approximately 32 metres in a north easterly direction.
- 2.45 **Car Park 1 Western Exit, Sandfields (West Side)**
From its junction with The Princess Margaret Way for a distance of approximately 17 metres in a south easterly direction.
- 2.46 **Car Park 1, Sandfields (North East Side)**
From its junction with The Princess Margaret Way for a distance of approximately 178 metres in a south easterly direction.
- 2.47 **Car Park 1, Eastern Entrance (South Side)**
From its junction with The Princess Margaret Way for a distance of approximately 17 metres in a westerly direction.
- 2.48 **Car Park 2, Western Exit, Sandfields (West Side)**
From its junction with The Princess Margaret Way for a distance of approximately 18 metres in a southerly direction.
- 2.49 **Car Park 2, Sandfields (North East Side)**
From its junction with The Princess Margaret Way for a distance of approximately 95 metres in a south easterly direction.
- 2.50 **Car Park 2, Eastern Entrance, Sandfields (South Side)**
From its junction with The Princess Margaret Way for a distance of approximately 16 metres in a westerly direction.
- 2.51 **Beach Access Road, Sandfields (Both Sides)**
From its junction with The Princess Margaret Way for a distance of approximately 28 metres in a south westerly direction.

Schedule 3 – No Stopping Except Buses At Any Time

- 3.1 **Scarlet Avenue, Sandfields (South West Side)**
From a point approximately 53 metres north west of its junction with The Princess Margaret Way for a distance of approximately 20 metres in a north westerly direction.
- 3.2 **The Princess Margaret Way, Sandfields (South West Side)**
From a point approximately 191 metres north west of its junction with Victoria Road for a distance of approximately 30 metres in a north westerly direction.

Schedule 4 – Limited Waiting, 2 Hours No Return Within 2 Hours

- 4.1 The Princess Margaret Way, Sandfields (East Side)**
From a point approximately 54 metres south of its junction with Tir Morfa Road for a distance of approximately 49 metres in a southerly direction.
- 4.2 The Princess Margaret Way, Sandfields (North East Side)**
From a point approximately 26 metres south east of its junction with Marine Drive for a distance of approximately 33 metres in a south easterly direction.
- 4.3 The Princess Margaret Way, Sandfields (North East Side)**
From a point approximately 16 metres north west of its junction with the Hotel Access Road for a distance of approximately 83 metres in a north westerly direction.
- 4.4 The Princess Margaret Way, Sandfields (North East Side)**
From a point approximately 9 metres south east of its junction with the Leisure Centre Access Road 60 metres in a south easterly direction.
- 4.5 The Princess Margaret Way, Sandfields (North East Side)**
From a point approximately 31 metres north west of its junction with Channel view for a distance of 74 metres in a north westerly direction.
- 4.6 The Princess Margaret Way, Sandfields (North East Side)**
From a point approximately 54 metres south east of its junction with Channel View for a distance of approximately 66 metres in a south easterly direction.
- 4.7 The Princess Margaret Way, Sandfields (South West Side)**
From a point approximately 217 metres north west of its junction with the western exit of Car Park 1 for a distance of approximately 46 metres in a north westerly direction.
- 4.8 The Princess Margaret Way, Sandfields (South West Side)**
From a point approximately 90 metres north west of its junction with the western exit of Car Park 1 for a distance of approximately 47 metres in a north westerly direction.
- 4.9 The Princess Margaret Way, Sandfields (South West Side)**
From a point approximately 13 metres south east of its junction with the eastern entrance of Car Park 1 for a distance of approximately 31 metres in a south easterly direction.
- 4.10 The Princess Margaret Way, Sandfields (South West Side)**
From a point approximately 706 metres north west of its junction with Victoria Road for a distance of approximately 103 metres in a south easterly direction.
- 4.11 The Princess Margaret Way, Sandfields (South West Side)**
From a point approximately 489 metres north west of its junction with Victoria Road for a distance of approximately 48 metres in a south easterly direction.

- 4.12 **The Princess Margaret Way, Sandfields (South West Side)**
From a point approximately 427 metres north west of its junction with Victoria Road for a distance of approximately 74 metres in a south easterly direction.
- 4.13 **The Princess Margaret Way, Sandfields (South West Side)**
From a point approximately 271 metres north west of its junction with Victoria Road for a distance of approximately 50 metres in a south easterly direction.
- 4.14 **Car Park 1, Sandfields (South West Side)**
From a point approximately 18 metres south east of its junction with The Princess Margaret Way for a distance of approximately 145 metres in a south easterly direction.
- 4.15 **Car Park 2, Sandfields (South West Side)**
From a point approximately 25 metres south east of its junction with The Princess Margaret Way for a distance of approximately 59 metres in a south easterly direction.

Schedule 5 – Disabled Only Parking

- 5.1 **Car Park 1, Sandfields (South West Side)**
From a point approximately 12 metres north west of its junction with The Princess Margaret Way for a distance of approximately 15 metres in a north westerly direction.
- 5.2 **Car Park 2, Sandfields (South West Side)**
From a point approximately 17 metres south west of its junction with The Princess Margaret Way for a distance of approximately 9 metres in a south easterly direction.
- 5.3 **Car Park 2, Sandfields (South West Side)**
From a point approximately 13 metres west of its junction with The Princess Margaret Way for a distance of approximately 14 metres in a north westerly direction.
- 5.4 **The Princess Margaret Way, Sandfields (South West Side)**
From a point approximately 740 metres north west of its junction with Victoria Road for a distance of approximately 34 metres in a south easterly direction.

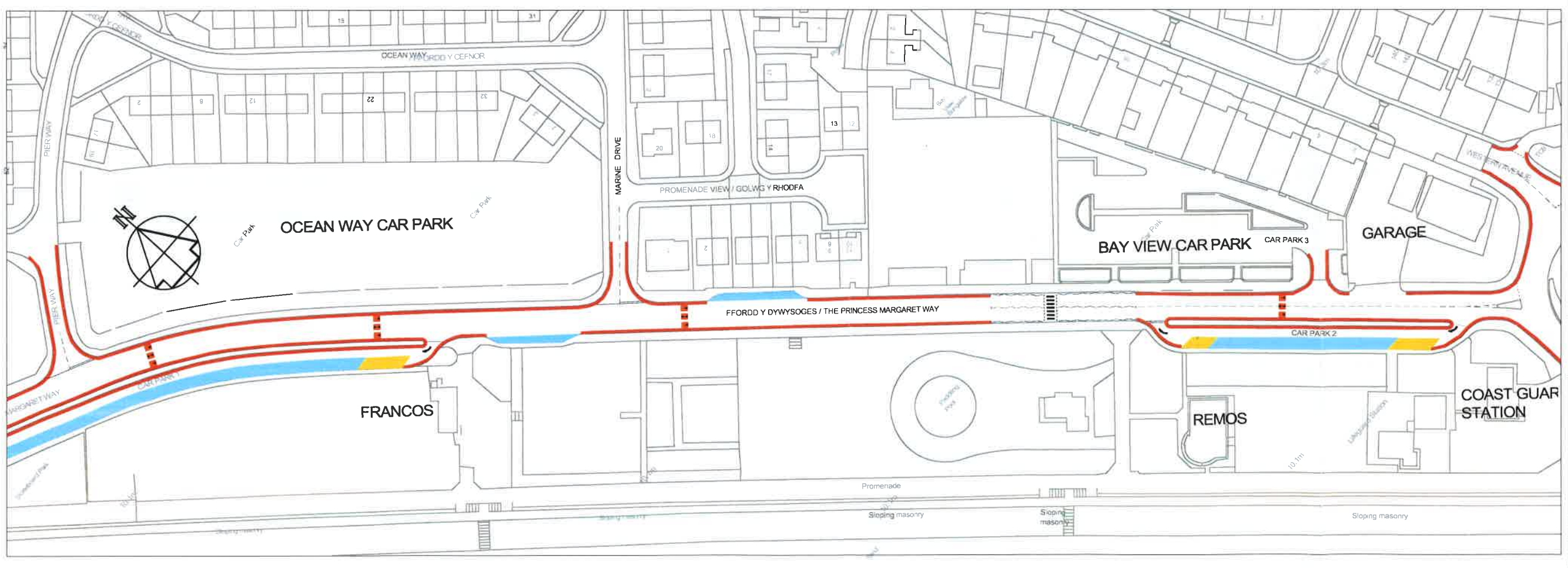
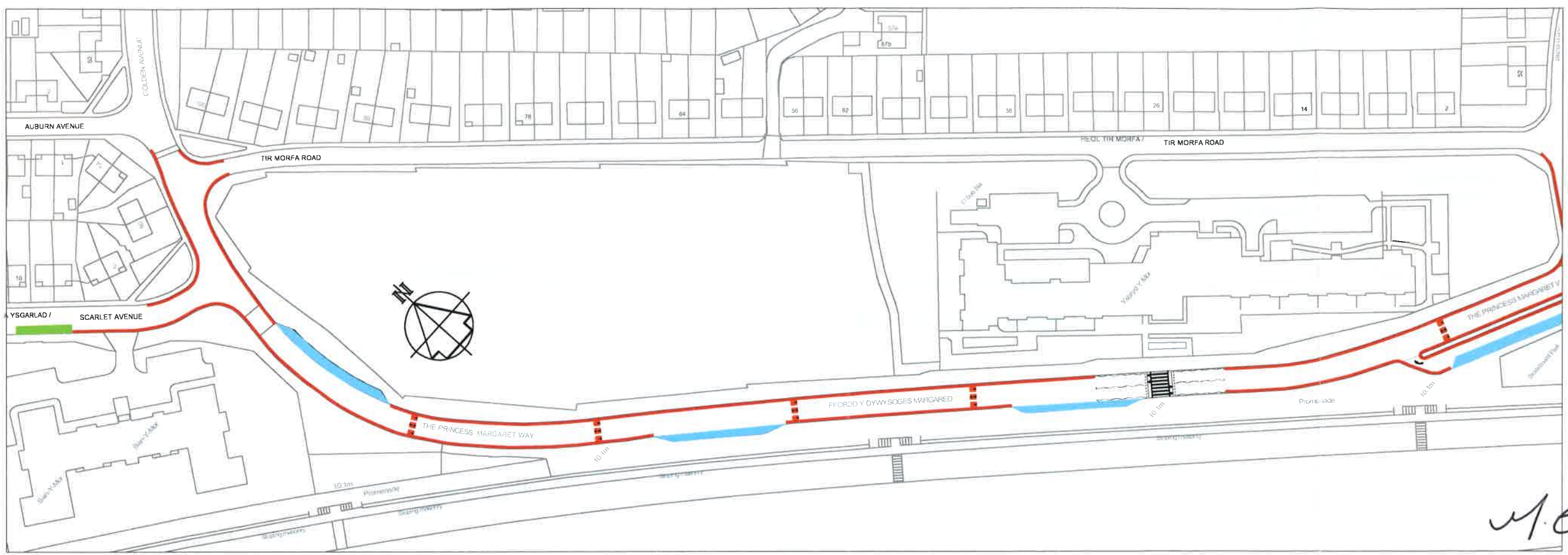
THE COMMON SEAL OF)
THE COUNCIL WAS)
HEREUNTO AFFIXED THIS)
15th DAY OF MAY 2018)
IN THE PRESENCE OF: -)


PROPER OFFICER



Dep. No.

Project



NOTES

1 THIS IS A C.A.D. DRAWING AND SHOULD NOT BE AMENDED BY HAND

2 All dimensions in millimetres unless otherwise stated.

Key:-

- Proposed No Waiting, Loading Unloading At Any Time Order
- Proposed Limited Waiting 2 Hours No return Within 2 Hours
- Proposed Disabled Bay 24 Hours a Day, 7 Days a Week
- Proposed Bus Stop

PROPER OFFICER

M.C. Lr. H.

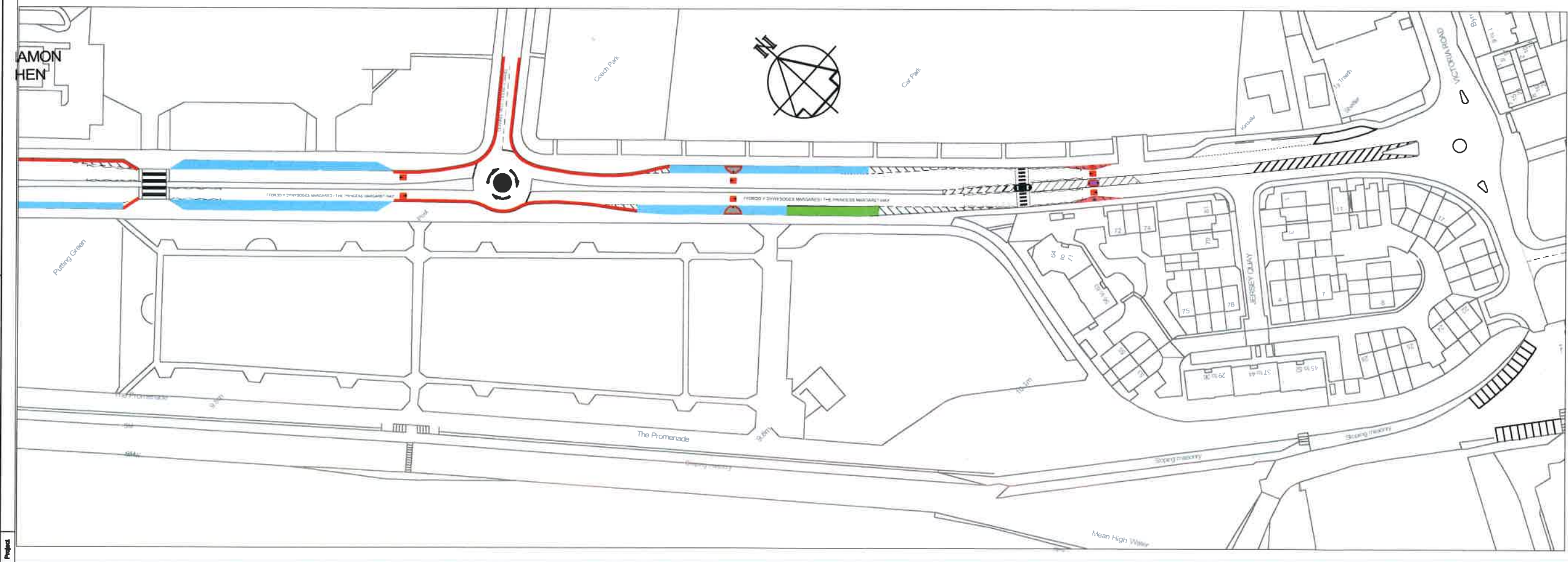
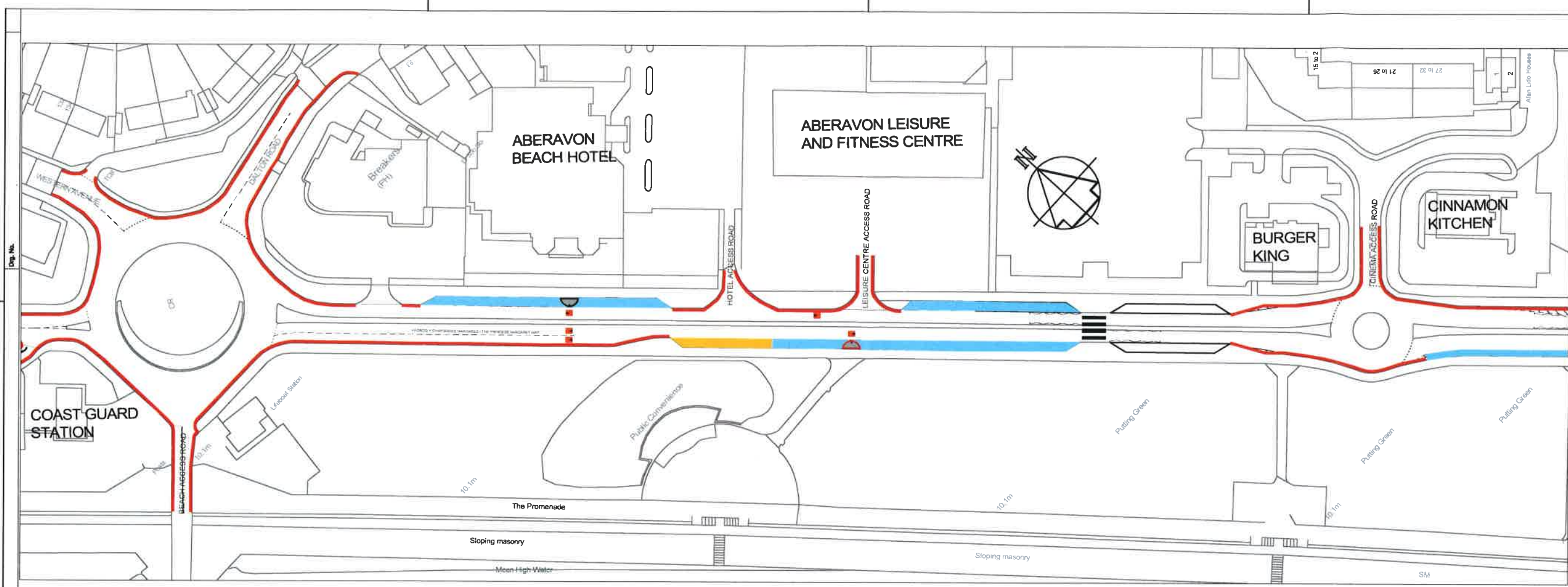
Rev	Details	By	Chk	App	Date

Neath Port Talbot
Castell-nedd Port Talbot
ENGINEERING AND TRANSPORT

GARETH HUNT
CORPORATE DIRECTOR OF ENVIRONMENT
THE QUAYS BRUNEL WAY
BAGLAN ENERGY PARK
NEATH SA11 2DG

NTS
Traffic Regulation Orders
Absence of Obstruction
Stand 1 of 2

File No.	Revised Order No.
Drawn: [Signature]	Checked: MCB
Date: 18/08/18	Date: 18/08/18
Drawn: NTS	Checked: [Signature]
Drawing No: R35700 12	



NOTES

1 THIS IS A C.A.D. DRAWING AND SHOULD NOT BE AMENDED BY HAND

2 All dimensions in millimetres unless otherwise stated

Key:-

- Proposed No Waiting, Loading Unloading At Any Time Order
- Proposed Limited Waiting 2 Hours No return Within 2 Hours
- Proposed Disabled Bay 24 Hours a Day, 7 Days a Week
- Proposed Bus Stop

PROPOSED OFFICER

Rev	Changes	DR	CR	AP	Date
1					

Neath Port Talbot
Castell nedd Port Talbot
CORPORATE DIRECTORATE OF ENVIRONMENT
THE QUAYS, BRUNEL WAY
SAGLAN ENERGY PARK
NEATH SA11 3DD

Garreth Nutt
Traffic Regulation Officer

Sheet 2 of 2

File No	Prepared Code No
001	001

Drawn	Checked	File No	Date	File No	Date	File No	Date
001	001	001	001	001	001	001	001

NTS

03/07/2013