

THE LEICESTERSHIRE COUNTY COUNCIL
(VARIOUS ROADS, GROBY (AREA 7),
BOROUGH OF HINCKLEY AND BOSWORTH)
EXPERIMENTAL ORDER No.1 2014

The Leicestershire County Council ("the Council") in exercise of its powers under Sections 9, 10(2) and Part IV of Schedule 9 of the Road Traffic Regulation Act 1984 ("The Act") and of all other enabling powers, hereby makes the following Order:-

1. This Order shall come into force on the eighteenth day of July 2014 and may be cited as "The Leicestershire County Council (Various Roads, Groby (Area 7), Borough of Hinckley and Bosworth) Experimental Order 2014".
2. The exemptions contained in this Order as set out in column 1 of Schedule 1 shall hereafter be referred to by reference to the code letters given in column 2 of Schedule 1.
3. (1) In this Order –

"authorised cab rank" means any area of carriageway which is comprised within and indicated by a road marking complying with diagram 1028.2 in Schedule 6 of The Traffic Signs Regulations and General Directions 2002;

"authorised parking place" means any parking place on a road authorised or designated by an Order made or having effect as if made under the Act;

"bus" has the same meaning as in Regulation 22 of the Traffic Signs Regulations and General Directions 2002;

"bus stop area" means any area of carriageway on the sides of roads specified in this Order which is comprised within and indicated by a road marking complying with either diagram 1025.2 or diagram 1025.3 to the Traffic Signs Regulations and General Directions 2002;

"C.E.O." means a duly authorised Civil Enforcement Officer;

"disabled person's badge" has the same meaning as in The Disabled Persons (Badges for Motor Vehicles)(England) Regulations 2000 and subsequent Amendment Regulations;

"disabled persons designated parking bay" means the part of the carriageway or side of road marked in accordance with Schedule 6 of the Traffic Signs Regulations and General Directions 2002 (as amended) by the marking shown in diagram 1028.3, 1032 or 1033 (or permitted variants thereof);

"doctors' permit holders" means a vehicle which displays a valid permit issued to a Doctor for use in a specified location;

"footway parking area" means an area of the footway specifically designated for the purpose of waiting;

"goods vehicle" has the same meaning as that ascribed to it in Section 192(1) of the Road Traffic Act 1988;

"heavy commercial vehicle" has the same meaning as in Section 138 of the Act;

"loading" and "unloading" means the collection or delivery of goods (parcels, stock and other items of that nature) to or from a vehicle where the goods cannot be reasonably collected or delivered except by the use of that vehicle in a particular length of road;

"market day" means any day of the week approved and authorised under a market charter for the holding of a market or such other bona fide licensed market;

"market trader" means any person duly authorised an appropriate body to trade from an authorised market stall or stand or location as from time to time may be specified by the appropriate body for the purposes of his or her trading;

"motor cycle" has the same meaning as in Section 136 of The Act;

"motor vehicle" means any vehicle as defined by the Construction and Use Regulations 1986 (as amended) which is mechanically propelled except where otherwise provided;

"parking disc" means a disc, issued by a local authority, complying with the requirements of the British Standard Specification for Parking Discs (BS No.4631:1970) but coloured blue, and capable of showing the quarter hour period during which a period of waiting begins, or a blue badge under the Disabled Persons (Badges for Motor Vehicles)(England) Regulations 2000;

"permitted parking place" means any part of a road hereby authorised by the Council for use as a parking place, bay or space where vehicles may wait;

"permit" means a written warrant issued by or on behalf of Leicestershire County Council allowing the holder to wait in a specified location;

"permit holder" means a vehicle which displays a valid permit;

"residents' parking permit holder / residents' permit holder" means a vehicle which displays a valid permit issued to a resident of the specified location;

"road / roads" means the carriageway the footway and any verges being the full width of the highway extent from one boundary to another;

"school entrance" means any area of carriageway on the side of the road where vehicles are not permitted to stop and indicated by a road marking complying with diagram 1027.1 of the 2002 Regulations;

"solo motor cycle" means a motor cycle without a sidecar and having two wheels;

"taxi" means a Hackney Carriage vehicle licensed under section 37 of the Town Police Clauses Act 1847;

"vehicle" means any Motor Vehicle as defined in this Order and any other vehicle (capable of the carriage of persons or goods) except cycles unless otherwise provided;

"4.00 p.m. to 10.00 a.m. the following morning" wherever referred to in this Order means that period of time commencing at 4.00 p.m. in the afternoon of any day and terminating at 10.00 a.m. on the morning of the next day;

"The Act" means The Road Traffic Regulation Act 1984.

- (2) For the purpose of this Order a vehicle shall be regarded as displaying a disabled person's badge in the relevant position, where in accordance with The Disabled Persons (Badges for Motor Vehicles) (England) Regulations 2000 (as amended):
- (i) the Badge is displayed on the vehicle's dashboard or fascia panel with the front of the Badge facing forward with the details thereon clearly visible from an external position, or
 - (ii) where the vehicle has no dashboard or fascia panel or windscreen where the Badge may be exhibited or displayed it shall be exhibited in a conspicuous position on the front or near side of the vehicle and

in either case a parking disc is exhibited in the relevant position prescribed in The Disabled Persons (Badges for Motor Vehicles) (England) Regulations 2000 (as amended).

- (3) For the purposes of this Order and where any article permits, it shall not be unlawful to cause or permit a disabled person's vehicle which displays in the relevant position a disabled person's badge and a parking disc (on which the driver, or other person in charge of the vehicle, has marked the time at which the period of waiting began) to wait on the sides of roads referred to in the specific article, for a period not exceeding 3 hours unless otherwise stated (not being a period separated by an interval of less than one hour, unless otherwise stated, from a previous period of waiting by the same vehicle on the same side of road on the same day) provided that no such vehicle shall wait in any length of road where there is for the time being a prohibition of loading and unloading.

- 4.1 "The Leicestershire County Council (Various Roads, Groby and Ratby (Area 7), District of Hinckley and Bosworth) Consolidation and Amendment Order 2009" is

hereby suspended in respect of those lengths of roads specified in Schedule 2 for the duration that this Order remains in force.

- 4.2 The Leicestershire County Council (Various Roads, Groby and Ratby (Area 7), District of Hinckley and Bosworth) Amendment Order No.2 2013" is hereby suspended in respect of those lengths of roads specified in Schedule 2 for the duration that this Order remains in force.
- 5.1 No person shall, except upon the direction or with the permission of a police officer in uniform, a community support officer or a C.E.O., cause or permit any vehicle to wait between the hours of 8.00 a.m. and 5.00 p.m. on any day other than a Saturday or Sunday, in the permitted parking place specified in Schedule 3 Part 1 to this Order:-
- a) For a period longer than 2 hours, or
 - b) If a period of less than 2 hours has elapsed since the last period of waiting by that vehicle on the same permitted parking place;
- 5.2 No person shall, except upon the direction or with the permission of a police officer in uniform, a community support officer or a C.E.O., or in accordance with the exemption provisions, cause or permit any vehicle to wait between the hours of 8.00 a.m. and 5.00 p.m. on any day other than a Saturday or Sunday, on the sides of road specified in Schedule 3 Part 2 to this Order.
- 5.3 No person shall, except upon the direction or with the permission of a police officer in uniform, a community support officer or a C.E.O., or in accordance with the exemption provisions, cause or permit any vehicle to wait at any time on any day, on the sides of road specified in Schedule 3 Part 3 to this Order.
6. Except where otherwise stated, a reference in this order to a numbered Article or Schedule is reference to the Article or Schedule bearing that number in this order.

7. The plan annexed to this Order and marked drawing number TM4206/1/2014/C is for identification purposes only.

SCHEDULE 1

TYPE OF EXEMPTION	CODE
For vehicles to allow people to board or alight.	LCCA
For vehicles used in connection with:- (i) building, industrial or demolition operations; (ii) the removal of any obstruction to traffic; (iii) the maintenance, improvement or reconstruction of the said sides of roads; or (iv) the laying, erection, alternative or repair on, or in land adjacent to the said sides of roads of any sewer or of any main, pipe or apparatus for the supply of gas, water or electricity or of any telegraphic line as defined in the Telecommunications Act 1984.	LCCB
For vehicles to be used in the service of a local authority, highways agency, an area health authority or a water undertaker in pursuance of statutory powers or duties and whilst being so used in such service it is necessary for the vehicle to be positioned in the place where it is waiting.	LCCC
For vehicles to be used for the purpose of delivering or collecting postal packets as defined in section 87 of the Postal Services Act 2000 by any universal service provider.	LCCD
Not Allocated	LCCE
For vehicles to wait at or near to any premises situated on or	LCCF

adjacent to the said sides of roads for so long as such waiting by that vehicle is reasonably necessary in connection with any wedding or funeral.	
For vehicles to be used for fire brigade, ambulance or police purposes.	LCCG
For goods to be loaded on or unloaded from the vehicle on the sides of roads specified in this Order.	LCCH
<p>For Vehicles:</p> <p>(a) to wait upon an authorised parking place,</p> <p>(b) being a hackney carriage, to wait upon an authorised cab rank, or</p> <p>(c) licensed taxi.</p>	LCCI
For a disabled person's vehicle which displays in the relevant position a disabled person's badge, and a parking disc (on which the driver, or other person in charge of the vehicle, has marked the time at which the period of waiting began) to wait on the sides of roads referred to in that Schedule for a period not exceeding three hours (not being a period separated by an interval of less than one hour from a previous period of waiting by the same vehicle on the same side of road on the same day) provided that no such vehicle shall wait in any length of road where there is for the time being a prohibition of loading and unloading.	LCCJ
For vehicles to wait on the sides of roads referred to therein for so long as may be necessary while any gate or other barrier at the entrance to premises to which the vehicle requires access or from which it has just emerged is being opened or closed, if it is not reasonably practicable for the vehicle to wait otherwise than in that road while such a gate or barrier is opened or closed.	LCCK

Any vehicle bona fide associated or used in connection with or for the purpose of licensed markets or special events.	LCCL
Where the person in control of the vehicle is directed or given permission to stop by a police officer, community support officer or a civil enforcement officer.	LCCM
To enable any motor vehicle that is constructed or adapted for the purpose of carrying monies or valuables under secure deposit and which is in use on a pre-arranged appointment for the delivery or collection of monies, financial instruments or valuables (for such a period of time as reasonably required to complete the delivery or collection) to any premises on the sides of road.	LCCN
Not Allocated	LCCO
Not Allocated	LCCP
Nothing shall render it unlawful to cause or permit any vehicle to wait in connection with the maintenance or repair of any premises adjoining the roads which can only be carried out from the road being such works as are required to be carried out to comply with any statutory obligation condition or stipulation subject to such waiting being limited to a maximum of two hours in any period of 24 hours.	LCCQ
Not Allocated	LCCR
Not Allocated	LCCS
Not Allocated	LCCT
Not Allocated	LCCU

Not Allocated	LCCV
Not Allocated	LCCW
Not Allocated	LCCX
For a disabled person's vehicle which displays in the relevant position a disabled person's badge and a parking disc (on which the driver, or other person in charge of the vehicle, has marked the time at which the period of waiting began) to wait in the designated parking place.	LCCY

SCHEDULE 2 **REVOCATIONS**

Items to be revoked from:

THE LEICESTERSHIRE COUNTY COUNCIL (VARIOUS ROADS, GROBY AND RATBY (AREA 7), DISTRICT OF HINCKLEY AND BOSWORTH) CONSOLIDATION AND AMENDMENT ORDER 2009

No waiting at any time

Stephenson Way, Groby

the south side from its junction with Ratby Road in a westerly direction for a distance of approximately 35 metres

No waiting Mon-Fri 8am-5pm

Farr Wood Close, Groby

both sides from its junction with Stephenson Way in a north-westerly direction for a distance of 9 metres

Fir Tree Lane, Groby

- (i) the south-west side from a point 110 metres north-west of its junction with Ratby Road in a north-westerly direction for a distance of 30 metres and then across the end of the road to the north-eastern side
- (ii) the south-west side from a point 49 metres north-west of its junction with Ratby Road in a north-westerly direction for a distance of 13 metres
- (iii) the south-west side from a point 80 metres north-west of its junction with Ratby Road in a north-westerly direction for a distance of 13 metres

Poplars Close, Groby

both sides from its junction with Stephenson Way in an easterly direction for a distance of 12 metres

Stephenson Close, Groby

the north-west side from its junction with Stephenson Way in a southerly direction for a distance of 59 metres, including the turning head

Stephenson Way, Groby

- (i) the north side from a point 36 metres west of its junction with Ratby Road in a westerly direction for a distance of 77 metres
- (ii) the north side from a point 139 metres west of its junction with Ratby Road in a westerly then southerly direction for a distance of 69 metres
- (iii) the south side from a point 78 metres west of its junction with Ratby Road in a westerly direction then southerly direction for a distance of 146 metres
- (iv) the south-west side from its junction with Stephenson Close in a westerly direction for a distance of 15 metres

Windmill Rise, Groby

- (i) the north-west side from its junction with Stephenson Way in a north-easterly direction for a distance of 13 metres
- (ii) the north-west side from a point 22 metres north-east of its junction with Stephenson Way in a north-easterly direction to a point 38 metres north of its junction with Stephenson Way
- (iii) the north-west side from a point 40 metres north-east of its junction with Stephenson Way in a north-easterly direction to its junction with Fir Tree Lane, a distance of 55 metres
- (iv) the south-east side from its junction with Fir Tree Lane to its junction with Stephenson Way for the whole length a distance of 95 metres
- (v) the west side from a point 13 metres north of its junction with Stephenson Way in a northerly direction to a point 22 metres north of its junction with Stephenson Way
- (vi) the west side from a point 38 metres north of its junction with Stephenson Way in a northerly direction for a distance of approximately 2 metres

Items to be revoked from:

THE LEICESTERSHIRE COUNTY COUNCIL, (VARIOUS ROADS, GROBY AND RATBY (AREA 7), DISTRICT OF HINCKLEY AND BOSWORTH, AMENDMENT ORDER NO. 2 2013

Limited waiting 2 hours no return for 2 hours Mon-Fri 8am-5pm

Leicester Road, Groby

the north side from a point 91 metres north-west of its junction with Newtown Linford Lane in a north-westerly direction for a distance of 9 metres

Ratby Road, Groby

the north-west side from a point 10 metres south-west of its junction with Markfield Road in a south-westerly direction for a distance of 43 metres

No waiting at any time

Leicester Road, Groby

the north side from a point 91 metres north-west of its junction with Newtown Linford Lane in a south-easterly direction for a distance of 264 metres

Markfield Road, Groby

the north side from a point 100 metres north-west of its junction with Newtown Linford Lane in a north-westerly direction for a distance of 44 metres

Ratby Road, Groby

the north-west side from its junction with Markfield Road in a south-westerly direction for a distance of 10 metres

No waiting Mon-Fri 8am-5pm

Fir Tree Lane, Groby

the north-west side from a point 11 metres north-west of its junction with Ratby Road in a north-westerly direction for a distance of 129 metres

SCHEDULE 3

Schedule 3 Part 1

**Limited waiting 2 hours no return for 2 hours
Monday-Friday 8.00am-5.00pm**

Leicester Road, Groby

the north-east side from a point 85 metres north-west of its junction with Newtown Linford Lane in a north-westerly direction for a distance of 10 metres

Ratby Road, Groby

the north-west side from a point 13 metres south-west of its junction with Markfield Road in a south-westerly direction for a distance of 40 metres

EXEMPTIONS

The following exemptions apply to the above. Refer to Schedule 1 for the details of each exemption:-

LCCA, LCCB, LCCC, LCCD, LCCF, LCCG, LCCH, LCCM, LCCY.

Schedule 3 Part 2

**No waiting
Monday-Friday 8.00am-5.00pm**

Fir Tree Lane, Groby

the north-east side from a point 11 metres north-west of its junction with Ratby Road in a north-westerly direction for a distance of 100 metres

Stephenson Close, Groby

The north-west & south-west side from a point 13 metres south-west of its junction with Stephenson Way in a south-westerly, then south-easterly direction for a distance of 47 metres

Stephenson Way, Groby

- (i) the north side from a point 139 metres west of its junction with Ratby Road in a westerly direction to a point 13.5 metres north-east of its junction with Farr Wood Close
- (ii) the north-east side from a point 13.5 metres south-east of its junction with Windmill Rise in a south-easterly direction for a distance of 41 metres
- (iii) the south & south-east side from a point 78 metres north-west of its junction with Ratby Road in a westerly then south-westerly direction for a distance of 119 metres
- (iv) the south-east side from a point 13 metres south-west of its junction with Poplars Close in a south-westerly direction for a distance of 35 metres

Windmill Rise, Groby

the south-east side from a point 11 metres north-east of its junction with Stephenson Way in a north-easterly direction to a point 17 metres south-west of its junction with Fir Tree Lane

EXEMPTIONS

The following exemptions apply to the above. Refer to Schedule 1 for the details of each exemption:-

LCCA, LCCB, LCCC, LCCD, LCCE, LCCF, LCCG, LCCH, LCCI, LCCJ, LCCM, LCCN.

Schedule 3 Part 3

No waiting at any time

Farr Wood Close, Groby

both sides from its junction with Stephenson Way in a north-westerly direction for a distance of 11 metres

Fir Tree Lane, Groby

- (i) the north-east side from a point 111 metres north-west of its junction with Ratby Road in a north-westerly direction for a distance of 33 metres
- (ii) the south-west & north-west side from a point 111 metres north-west of its junction with Ratby Road in a north-westerly then north-easterly direction for a distance of 40 metres

Forest Rise, Groby

- (i) the north-east side from its junction with Stephenson Way in a north-westerly direction for a distance of 14 metres
- (ii) the south-west side from its junction with Lawnwood Road in a north-westerly direction for a distance of 25 metres

Lawnwood Road, Groby

the north-west side from its junction with Forest Rise in a south-westerly direction for a distance of 12 metres

Lawnwood Road (Service Road Loop), Groby

the south-east side from its junction with Martinshaw Lane in a south-westerly direction for a distance of 9.5 metres

Leicester Road, Groby

- (i) the north-east side from a point 85 metres north-west of its junction with Newtown Linford Lane in a south-easterly direction for a distance of 258 metres
- (ii) the north-east side from a point 95 metres north-west of its junction with Newtown Linford Lane in a north-westerly direction for a distance of 9 metres.

Markfield Road, Groby

the north-east side from a point 104 metres north-west of its junction with Newtown Linford Lane in a north-westerly direction for a distance of 40 metres

Martinshaw Lane, Groby

- (i) the north-east side from its junction with Forest Rise in a south-easterly direction for a distance of 15 metres
- (ii) the south-west side from its junction with Lawnwood Road in a south-easterly direction for a distance of 25 metres

Poplars Close, Groby

both sides from its junction with Stephenson Way in a south-easterly direction for a distance of 11.5 metres

Ratby Road, Groby

the north-west side from its junction with Markfield Road in a south-westerly direction for a distance of 13 metres

Stephenson Close, Groby

- (i) the north-west side from its junction with Stephenson Way in a south-westerly direction for a distance of 13 metres
- (ii) the south-east side from its junction with Stephenson Way in a south-westerly direction for a distance of 8 metres

Stephenson Way, Groby

- (i) the north-east side from a point 13.5 metres south-east of its junction with Windmill Rise in a north-westerly direction for a distance of 37 metres
- (ii) the north-west side from its junction with Forest Rise in a north-easterly direction for a distance of 71.5 metres
- (iii) the north-west side from a point 13.5 metres north-east of its junction with Farr Wood Close in a south-westerly direction for a distance of 38 metres
- (iv) the south-east side from a point 14 metres north-west of its junction with Poplars Close in a south-westerly direction for a distance of 32 metres

(v) the south-east side from its junction with Forest Rise in a north-easterly direction for a distance of 17 metres

(vi) the south-west side from its junction with Ratby Road in a north-westerly direction to a point 17 metres north-west of its junction with Stephenson Close

Windmill Rise, Groby

(i) the north-west side from its junction with Stephenson Way in a north-easterly direction for a distance of 16 metres

(ii) the south-east side from its junction with Stephenson Way in a north-easterly direction for a distance of 11 metres

(iii) the north-west side from its junction with Fir Tree Lane in a south-westerly direction for a distance of 19 metres

(iv) the south-east side from its junction with Fir Tree Lane in a south-westerly direction for a distance of 10 metres

EXEMPTIONS

The following exemptions apply to the above. Refer to Schedule 1 for the details of each exemption:-

LCCA, LCCB, LCCC, LCCD, LCCE, LCCF, LCCG, LCCH, LCCI, LCCJ, LCCM, LCCN.

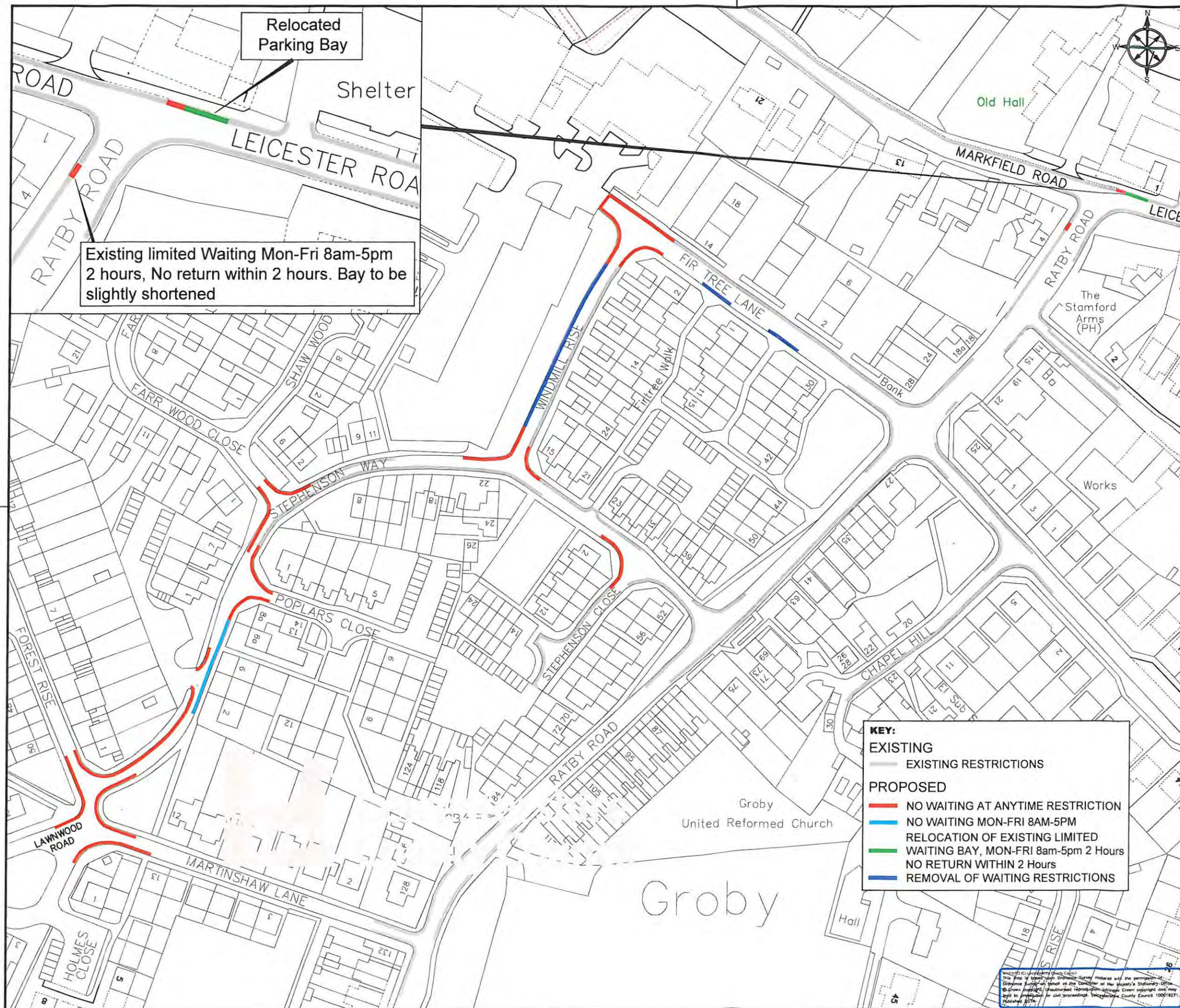
THE COMMON SEAL of THE
LEICESTERSHIRE COUNTY COUNCIL
was hereunto affixed this seventh day of
July 2014 in the presence of

)
)
)
)

AW James

Head of Legal Services





REVISION APPROVED	AMENDMENT	SIGNED/DATE	REV.
-------------------	-----------	-------------	------



ENVIRONMENT AND
TRANSPORT DEPARTMENT



PHIL CROSSLAND
DIRECTOR

TRAFFIC MANAGEMENT

CLIENT:

TITLE:
Parish: GROBY
Review of Waiting Restrictions
Experimental Traffic Regulation Order
Stephenson Way/Windmill Rise/Fir Tree Lane
Ratby Road and Leicester Road

DRAWING NUMBER	SCALE
TM4206/1/2014/C	NTS
PREPARED BY: SJ Houghton	DATE: 10/04/2014
CHECKED BY: R. Kane	SIZE: A3
APPROVED BY: ADD APPROVED BY	CORR FILE:

AUTOCAD PROJECT DIR:	k:\
AUTOCAD FILENAME:	

COUNTY HALL * GLENFIELD * LEICESTER * LE3 8RJ
Tel: 0116 2323232 * Direct Dial 0116 305**** * Fax * 0116 305****
E Mail address: *****@leics.gov.uk www.leics.gov.uk

KEY:

EXISTING
— EXISTING RESTRICTIONS

PROPOSED

- NO WAITING AT ANYTIME RESTRICTION
- NO WAITING MON-FRI 8AM-5PM
- RELOCATION OF EXISTING LIMITED WAITING BAY, MON-FRI 8am-5pm 2 Hours
- NO RETURN WITHIN 2 Hours
- REMOVAL OF WAITING RESTRICTIONS

This map is a reproduction of the original map and is not to be used for any other purpose without the permission of the Leicestershire County Council. The map is a reproduction of the original map and is not to be used for any other purpose without the permission of the Leicestershire County Council. The map is a reproduction of the original map and is not to be used for any other purpose without the permission of the Leicestershire County Council.