

THE LEICESTERSHIRE COUNTY COUNCIL
(VARIOUS ROADS, HINCKLEY (AREA 2), BOROUGH OF HINCKLEY AND BOSWORTH)
(PARTIAL FOOTWAY PARKING, LIMITED WAITING, NO WAITING AT ANY TIME AND LIMITED
LOADING) ORDER No 2 2014

The Leicestershire County Council ("the Council") in exercise of its powers under Section 1(1) and 2(1) to (3) 4(2) 32 35 and Part IV of Schedule 9 of the Road Traffic Regulation Act 1984 ("the Act") and of all other enabling powers, hereby makes the following Order:-

1. This Order shall come into force on the tenth day of November 2014 and may be cited as "The Leicestershire County Council (Various Roads, Hinckley(Area 2), Borough of Hinckley and Bosworth) (Partial Footway Parking, Limited Waiting, No Waiting at Any Time and Limited Loading) Order No 2 2014 ".
2. The exemptions contained in this Order as set out in column 1 of Schedule 1 shall hereafter be referred to by reference to the code letters given in column 2 of Schedule 1.
3. (1) In this Order –

"authorised cab rank" means any area of carriageway which is comprised within and indicated by a road marking complying with diagram 1028.2 in Schedule 6 of The Traffic Signs Regulations and General Directions 2002;

"authorised parking place" means any parking place on a road authorised or designated by an Order made or having effect as if made under the Act;

"bus" has the same meaning as in Regulation 22 of the Traffic Signs Regulations and General Directions 2002;

"bus stop area" means any area of carriageway on the sides of roads specified in this Order which is comprised within and indicated by a road marking complying with either diagram 1025.2 or diagram 1025.3 to the Traffic Signs Regulations and General Directions 2002;

"C.E.O." means a duly authorised Civil Enforcement Officer;

"disabled person's badge" has the same meaning as in The Disabled Persons (Badges for Motor Vehicles)(England) Regulations 2000 and subsequent Amendment Regulations;

"disabled persons designated parking bay" means the part of the carriageway or side of road marked in accordance with Schedule 6 of the Traffic Signs Regulations and General Directions 2002 (as amended) by the marking shown in diagram 1028.3, 1032 or 1033 (or permitted variants thereof);

"doctors' permit holders" means a vehicle which displays a valid permit issued to a Doctor for use in a specified location;

"footway parking area" means an area of the footway specifically designated for the purpose of waiting;

"goods vehicle" has the same meaning as that ascribed to it in Section 192(1) of the Road Traffic Act 1988;

"heavy commercial vehicle" has the same meaning as in Section 138 of the Act;

"loading" and "unloading" means the collection or delivery of goods (parcels, stock and other items of that nature) to or from a vehicle where the goods cannot be reasonably collected or delivered except by the use of that vehicle in a particular length of road;

"market day" means any day of the week approved and authorised under a market charter for the holding of a market or such other bona fide licensed market;

"market trader" means any person duly authorised an appropriate body to trade from an authorised market stall or stand or location as from time to time may be specified by the appropriate body for the purposes of his or her trading;

"motor vehicle" means any vehicle as defined by the Construction and Use Regulations 1986 (as amended) which is mechanically propelled except where otherwise provided;

"parking disc" means a disc, issued by a local authority, complying with the requirements of the British Standard Specification for Parking Discs (BS No.4631:1970) but coloured blue, and capable of showing the quarter hour period during which a period of waiting begins, or a blue badge under the Disabled Persons (Badges for Motor Vehicles)(England) Regulations 2000;

"permitted parking place" means any part of a road hereby authorised by the Council for use as a parking place, bay or space where vehicles may wait;

"permit" means a written warrant issued by or on behalf of Leicestershire County Council allowing the holder to wait in a specified location;

"permit holder" means a vehicle which displays a valid permit;

"residents' parking permit holder / residents' permit holder" means a vehicle which displays a valid permit issued to a resident of the specified location;

"road / roads" means the carriageway the footway and any verges being the full width of the highway extent from one boundary to another;

"school entrance" means any area of carriageway on the side of the road where vehicles are not permitted to stop and indicated by a road marking complying with diagram 1027.1 of the 2002 Regulations;

"taxi" means a Hackney Carriage vehicle licensed under section 37 of the Town Police Clauses Act 1847;

"vehicle" means any Motor Vehicle as defined in this Order and any other vehicle (capable of the carriage of persons or goods) except cycles unless otherwise provided;

"4.00 p.m. to 10.00 a.m. the following morning" wherever referred to in this Order means that period of time commencing at 4.00 p.m. in the afternoon of any day and terminating at 10.00 a.m. on the morning of the next day;

"The Act" means The Road Traffic Regulation Act 1984.

- (2) For the purpose of this Order a vehicle shall be regarded as displaying a disabled person's badge in the relevant position, where in accordance with The Disabled Persons (Badges for Motor Vehicles) (England) Regulations 2000 (as amended):
- (i) the Badge is displayed on the vehicle's dashboard or fascia panel with the front of the Badge facing forward with the details thereon clearly visible from an external position, or
 - (ii) where the vehicle has no dashboard or fascia panel or windscreen where the Badge may be exhibited or displayed it shall be exhibited in a conspicuous position on the front or near side of the vehicle and

in either case a parking disc is exhibited in the relevant position prescribed in The Disabled Persons (Badges for Motor Vehicles) (England) Regulations 2000 (as amended).

- (3) For the purposes of this Order and where any article permits, it shall not be unlawful to cause or permit a disabled person's vehicle which displays in the relevant position a disabled person's badge and a parking disc (on which the driver, or other person in charge of the vehicle, has marked the time at which the period of waiting began) to wait on the sides of roads referred to in the specific article, for a period not exceeding 3 hours unless otherwise stated (not being a period separated by an interval of less than one hour, unless otherwise stated, from a previous period of waiting by the same vehicle on the same side of road on the same day) provided that no such vehicle shall wait in any length of road where there is for the time being a prohibition of loading and unloading.

- (4) The Leicestershire County Council (Various Roads, Hinckley Town Centre (Area 2), District of Hinckley and Bosworth) Consolidation and Amendment Order 2009 is hereby revoked in respect of those lengths of roads as specified in Schedule 2 to this Notice.

4.1 No person shall, except upon the direction or with the permission of a police officer in uniform, a community support officer or a C.E.O., cause or permit any vehicle to wait between the hours of 8.00am – 6.00pm Monday - Friday, in the permitted partial footway parking place specified in Schedule 3 Part 1 to this Order:-

- (a) For a period longer than 2 hours, or
- (b) If a period of less than 2 hours has elapsed since the last period of waiting by that vehicle on the same permitted parking place;

4.2 No person shall, except upon the direction or with the permission of a police officer in uniform, a community support officer or a C.E.O., or in accordance with the exemption provisions, cause or permit any vehicle to wait between the hours of 7.30 a.m. and 9.00 a.m. and 4.30 p.m. and 6.00 p.m. on any day other than a Saturday or Sunday, for the purpose of enabling goods to be loaded or unloaded from the vehicle on the sides of road specified in Schedule 3 Part 2 to this Order.

4.3 No person shall, except upon the direction or with the permission of a police officer in uniform, a community support officer or a C.E.O., or in accordance with the exemption provisions, cause or permit any vehicle to wait at any time on any day, on the sides of road specified in Schedule 3 Part 3 to this Order.

4.4 No person shall, except upon the direction or with the permission of a police officer in uniform, a community support officer or a C.E.O., or in accordance with the exemption provisions, cause or permit any vehicle to wait between the hours of 7.30 a.m. and 6.00 p.m. on any day other than a Sunday, on the sides of road specified in Schedule 3 Part 4 to this Order.

5. Except where otherwise stated, a reference in this order to a numbered Article or Schedule is reference to the Article or Schedule bearing that number in this order.

6. The plan(s) annexed to this Order and marked drawing number(s) 4213.000/Z1/40/1A , 4213.000/Z1/40/2A and 4213.000.Z1.40.5 are for identification purposes only.

SCHEDULE 1

TYPE OF EXEMPTION	CODE
For vehicles to allow people to board or alight.	LCCA
For vehicles used in connection with:- (i) building, industrial or demolition operations; (ii) the removal of any obstruction to traffic; (iii) the maintenance, improvement or reconstruction of the said sides of roads; or (iv) the laying, erection, alternative or repair on, or in land adjacent to the said sides of roads of any sewer or of any main, pipe or apparatus for the supply of gas, water or electricity or of any telegraphic line as defined in the Telecommunications Act 1984.	LCCB
For vehicles to be used in the service of a local authority, highways agency, an area health authority or a water undertaker in pursuance of statutory powers or duties and whilst being so used in such service it is necessary for the vehicle to be positioned in the place where it is waiting.	LCCC
For vehicles to be used for the purpose of delivering or collecting postal packets as defined in section 87 of the Postal Services Act 2000 by any universal service provider.	LCCD
Not Allocated	LCCE
For vehicles to wait at or near to any premises situated on or adjacent to the said sides of roads for so long as such waiting by that vehicle is reasonably necessary in connection with any wedding or funeral.	LCCF

For vehicles to be used for fire brigade, ambulance or police purposes.	LCCG
For goods to be loaded on or unloaded from the vehicle on the sides of roads specified in this Order.	LCCH
<p>For Vehicles:</p> <ul style="list-style-type: none"> (a) to wait upon an authorised parking place, (b) being a hackney carriage, to wait upon an authorised cab rank, or (c) licensed taxi. 	LCCI
For a disabled person's vehicle which displays in the relevant position a disabled person's badge, and a parking disc (on which the driver, or other person in charge of the vehicle, has marked the time at which the period of waiting began) to wait on the sides of roads referred to in that Schedule for a period not exceeding three hours (not being a period separated by an interval of less than one hour from a previous period of waiting by the same vehicle on the same side of road on the same day) provided that no such vehicle shall wait in any length of road where there is for the time being a prohibition of loading and unloading.	LCCJ
For vehicles to wait on the sides of roads referred to therein for so long as may be necessary while any gate or other barrier at the entrance to premises to which the vehicle requires access or from which it has just emerged is being opened or closed, if it is not reasonably practicable for the vehicle to wait otherwise than in that road while such a gate or barrier is opened or closed.	LCCK
Any vehicle bona fide associated or used in connection with or for the purpose of licensed markets or special events.	LCCL

Where the person in control of the vehicle is directed or given permission to stop by a police officer, community support officer or a civil enforcement officer.	LCCM
To enable any motor vehicle that is constructed or adapted for the purpose of carrying monies or valuables under secure deposit and which is in use on a pre-arranged appointment for the delivery or collection of monies, financial instruments or valuables (for such a period of time as reasonably required to complete the delivery or collection) to any premises on the sides of road.	LCCN
Not Allocated	LCCO
Not Allocated	LCCP
Nothing shall render it unlawful to cause or permit any vehicle to wait in connection with the maintenance or repair of any premises adjoining the roads which can only be carried out from the road being such works as are required to be carried out to comply with any statutory obligation condition or stipulation subject to such waiting being limited to a maximum of two hours in any period of 24 hours.	LCCQ
Not Allocated	LCCR
Not Allocated	LCCS
Not Allocated	LCCT
Not Allocated	LCCU
Not Allocated	LCCV

Not Allocated	LCCW
Not Allocated	LCCX
For a disabled person's vehicle which displays in the relevant position a disabled person's badge and a parking disc (on which the driver, or other person in charge of the vehicle, has marked the time at which the period of waiting began) to wait in the designated parking place.	LCCY

SCHEDULE 2
AMENDMENT REVOCATIONS

Items to be revoked from:

THE LEICESTERSHIRE COUNTY COUNCIL (VARIOUS ROADS, HINCKLEY TOWN CENTRE (AREA 2), DISTRICT OF HINCKLEY AND BOSWORTH) CONSOLIDATION AND AMENDMENT ORDER 2009

No loading at any time

Coventry Road, Hinckley

the north side from a point 18 metres east of its junction with Trinity Lane to its junction with Regent Street

No loading Mon-Fri 8am-9.30am and 4.30pm-6pm

Coventry Road, Hinckley

- (i) the north side from its junction with Marchant Road to its junction with Trinity Lane
- (ii) the south side from its junction with The Grove to its junction with Rugby Road

No waiting at any time

Coventry Road, Hinckley

- (i) the north side from a point 14 metres west of its junction with Brick Kiln Street for a distance of 35 metres in a westerly direction
- (ii) the north side from its junction with Marchant Road for a distance of 9 metres in a westerly direction
- (iii) the north side from its junction with Brick Kiln Street for a distance of 14 metres in an easterly direction
- (iv) the north side from its junction with Marchant Road for a distance of 14 metres in an easterly direction
- (v) the north side from its junction with Regent Street to a point 14 metres east of its junction with Marchant Road
- (vi) the north side from its junction with Brick Kiln Street in a westerly direction for a distance of 14 metres
- (vii) the south side from its junction with Rugby Road to a point 23 metres west of its junction with Trinity Lane
- (viii) the south side from its junction with Granville Road for a distance of 14 metres in a westerly direction
- (ix) the south side from its junction with Granville Road for a distance of 14 metres in an easterly direction
- (x) the south side from a point 14 metres east of its junction with Granville Road for a distance of 75 metres in an easterly direction

The Grove, Hinckley

the south-west side from a point 2 metres south of its junction with Coventry Road for a distance of 30 metres in a south-easterly direction

No waiting Mon-Sat 8.30am-6.30pm

Coventry Road, Hinckley

- (i) the north side from a point 14 metres east of its junction with Brick Kiln Street to a point 9 metres west of its junction with Marchant Road
- (ii) the south side from a point 23 metres west of its junction with Trinity Lane to its junction with The Grove
- (iii) the south side from a point 89 metres east of its junction with Granville Road to its junction with The Grove
- (iv)

SCHEDULE 3 PART 1

**Limited Waiting 2 hours no return for 2 hours
Monday-Friday 8.00am-6.00pm**

Brandon Road, Hinckley

the north-west side from a point 20 metres north-east of its junction with Northfield Road in a north-easterly direction for a distance of 68 metres

EXEMPTIONS

The following exemptions apply to the above. Refer to Schedule 1 for the details of each exemption:-

LCCA, LCCB, LCCC, LCCD, LCCF, LCCG, LCCH, LCCI, LCCJ, LCCM, LCCY.

SCHEDULE 3 PART 2

**No loading
Monday-Friday 7.30am-9.00am and 4.30pm-6.00pm**

Coventry Road, Hinckley

- (i) the north side from its junction with Regent Street in a westerly direction to its junction with Marchant Road

(ii) the south side from its junction with Rugby Road in a westerly direction to its junction with The Grove

EXEMPTIONS

The following exemptions apply to the above. Refer to Schedule 1 for the details of each exemption:-

LCCA, LCCB, LCCC, LCCD, LCCE, LCCF, LCCG, LCCH, LCCI, LCCJ, LCCM, LCCN.

SCHEDULE 3 PART 3

No waiting at any time

Coventry Road, Hinckley

(i) the north side from its junction with Regent Street in a south-westerly direction to its junction with Marchant Road

(ii) the south side from its junction with Rugby Road in a south-westerly direction to a point 49.5 metres north-east of its junction with The Grove

(iii) the south-east side from a point 10 metres north-east of its junction with The Grove in a south-westerly direction to its junction with The Grove

EXEMPTIONS

The following exemptions apply to the above. Refer to Schedule 1 for the details of each exemption:-

LCCA, LCCB, LCCC, LCCD, LCCG, LCCM,

No waiting at any time

Brandon Road, Hinckley

- (i) the north-west side from its junction with Northfield Road in a north-easterly direction for a distance of 20 metres
- (ii) the north-west side from a point 88 metres north-east of its junction with Northfield Road in a north-easterly direction for its entire length
- (iii) the south-east side from its junction with Northfield Road in a north-easterly direction for its entire length.

Brookdale, Hinckley

- (i) the north-east side from its junction with Coventry Road in a north-westerly direction for a distance of 16 metres
- (ii) the south-west side from its junction with Coventry Road in a north-westerly direction for a distance of 15 metres

Coventry Road, Hinckley

- (i) the north-west side from its junction with Marchant Road in a south-westerly direction to a point 98 metres north-east of its junction with Mason Court
- (ii) the north-west side from a point 65 metres north-east of its junction with Mason Court in a south-westerly direction to a point 15 metres south-west of its junction with Brookdale
- (iii) the south-east side from a point 54 metres south-west of its junction with The Grove in a south-westerly direction to a point 8 metres south-west of its junction with Hays Lane
- (iv) the south-east side from its junction with The Grove in a south-westerly direction for a distance of 28 metres

Granville Gardens, Hinckley

- (i) the north-east side from its junction with Coventry Road in a south-easterly direction for a distance of 27 metres
- (ii) the north-east side from its junction with Coventry Road in a south-easterly direction for a distance of 16 metres

Hays Lane, Hinckley

both sides from its junction with Coventry Road in a south-easterly direction for a distance of 7 metres

Mason Court, Hinckley

(i) the north-east side from its junction with Coventry Road in a north-westerly direction for a distance of 16 metres

(ii) the south-west side from its junction with Coventry Road in a north-westerly direction for a distance of 15 metres

Merevale Avenue, Hinckley

both sides from its junction with Northfield Road in a north-easterly direction for a distance of 15 metres

Northfield Road, Hinckley

(i) the north-east side from its junction with Coventry Road in a south-easterly direction to a point 23 metres south-east of its junction with Brandon Road

(ii) the north-east side from a point 19.5 metres north-west of its junction with Merevale Close in a south-easterly direction for a distance of 39 metres

(iii) the south-west side from its junction with Coventry Road in a south-easterly direction for a distance of 58 metres

(iv) the south-west side from a point 77.5 metres south-east of its junction with Coventry Road in a south-easterly direction for a distance of 35.5 metres

Rosemary Way, Hinckley

(i) the north-east side from its junction with Coventry Road in a south-easterly direction for a distance of 19 metres

(ii) the north-east side from its junction with Coventry Road in a south-easterly direction for a distance of 10 metres

The Grove, Hinckley

(i) the north-east side from its junction with Coventry Road in a south-easterly direction for a distance of 7 metres

(ii) the south-west side from its junction with Coventry Road in a south-easterly direction for a distance of 32 metres

EXEMPTIONS

The following exemptions apply to the above. Refer to Schedule 1 for the details of each exemption:-

LCCA, LCCB, LCCC, LCCD, LCCE, LCCF, LCCG, LCCH, LCCI, LCCJ, LCCM, LCCN.

SCHEDULE 3 PART 4

**No waiting
Monday-Saturday 7.30am-6.00pm**

Coventry Road, Hinckley

(i) the north-west side from a point 98 metres north-east of its junction with Mason Court in a south-westerly direction for a distance of 33 metres

(ii) the south-east side from a point 28 metres south-west of its junction with The Grove in a south-westerly direction for a distance of 26 metres

(iii) the south-east side from a point 49.5 metres north-east of its junction with The Grove in a south-westerly direction to a point 10 metres north-east of its junction with The Grove

Northfield Road, Hinckley

the south-west side from a point 58 metres south-east of its junction with Coventry Road in a south-easterly direction for a distance of 19.5 metres

EXEMPTIONS

The following exemptions apply to the above. Refer to Schedule 1 for the details of each exemption:-

LCCA, LCCB, LCCC, LCCD, LCCF, LCCG, LCCH, LCCI, LCCJ, LCCM, LCCN.

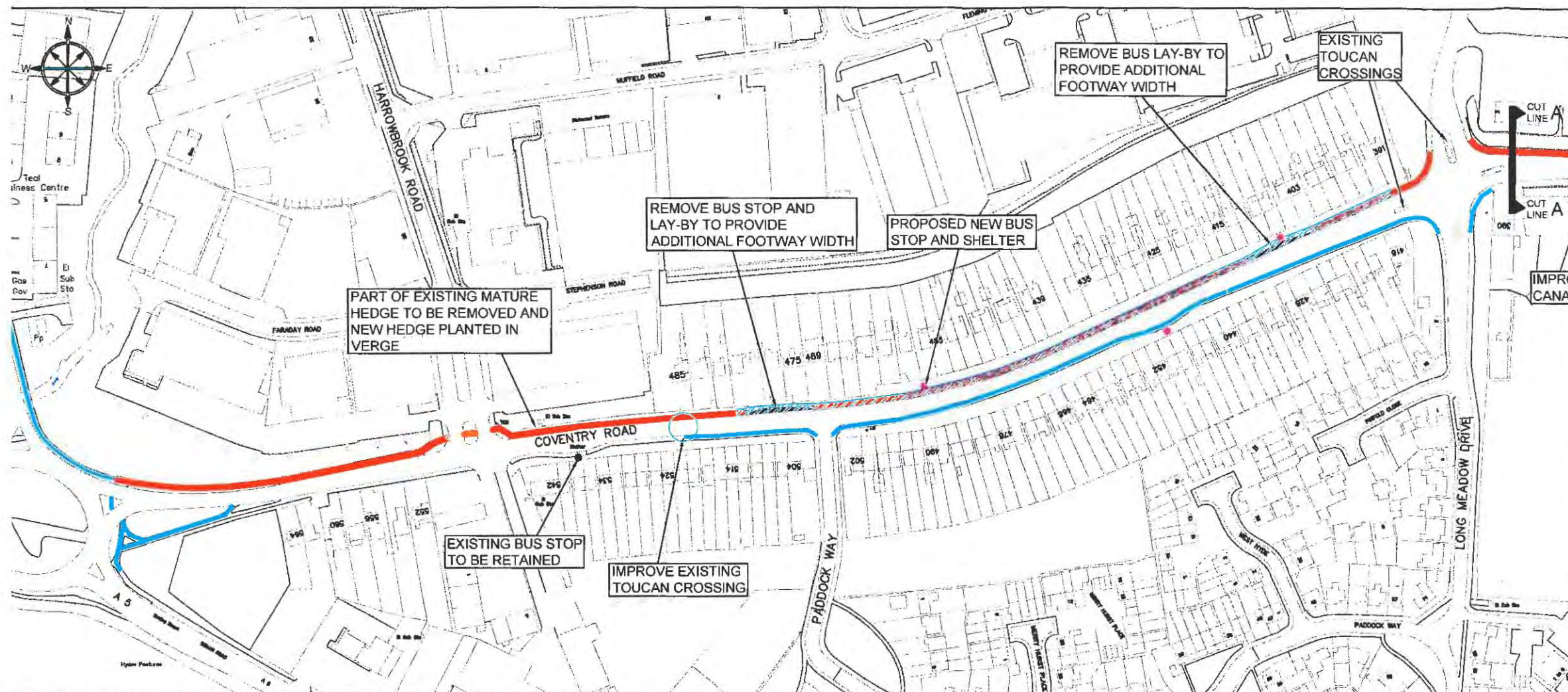
THE COMMON SEAL of THE
LEICESTERSHIRE COUNTY COUNCIL
was hereunto affixed this twenty eighth day of
October 2014 in the presence of

)
)
)
)

31852



Lauren Haslam



- KEY:**
- Proposed shared use footway / cycleway, widen to 3.0m where possible.
 - Proposed maintenance footway improvement / drainage scheme.
 - Existing cycle facility to be retained.
 - Proposed pedestrian and cycle improvements included as part of neighbouring consultations.
 - Proposed bus stop shelter and raised access kerbs.
 - Proposed tactile crossing points with flush dropped kerbs.
 - Existing refuge to be removed.
 - Proposed Toucan crossing facility

Notes:

- Existing on carriageway virtual cycle lanes to be refreshed.
- Raised bus stop access kerbs to be installed at existing bus stops where possible.
- Existing street lighting columns to be relocated to back of footway where necessary.
- Dropped crossing points to be improved where appropriate.
- Vegetation overhanging the highway boundary to be cut back.
- Cycle parking to be provided at community facilities.
- Signing and Lining for proposals to be installed in suitable locations - not shown.



ENVIRONMENT AND
TRANSPORT DEPARTMENT



PHIL CROSSLAND
DIRECTOR

ENGINEERING
DESIGN



CLIENT:
SUSTAINABLE TRAVEL

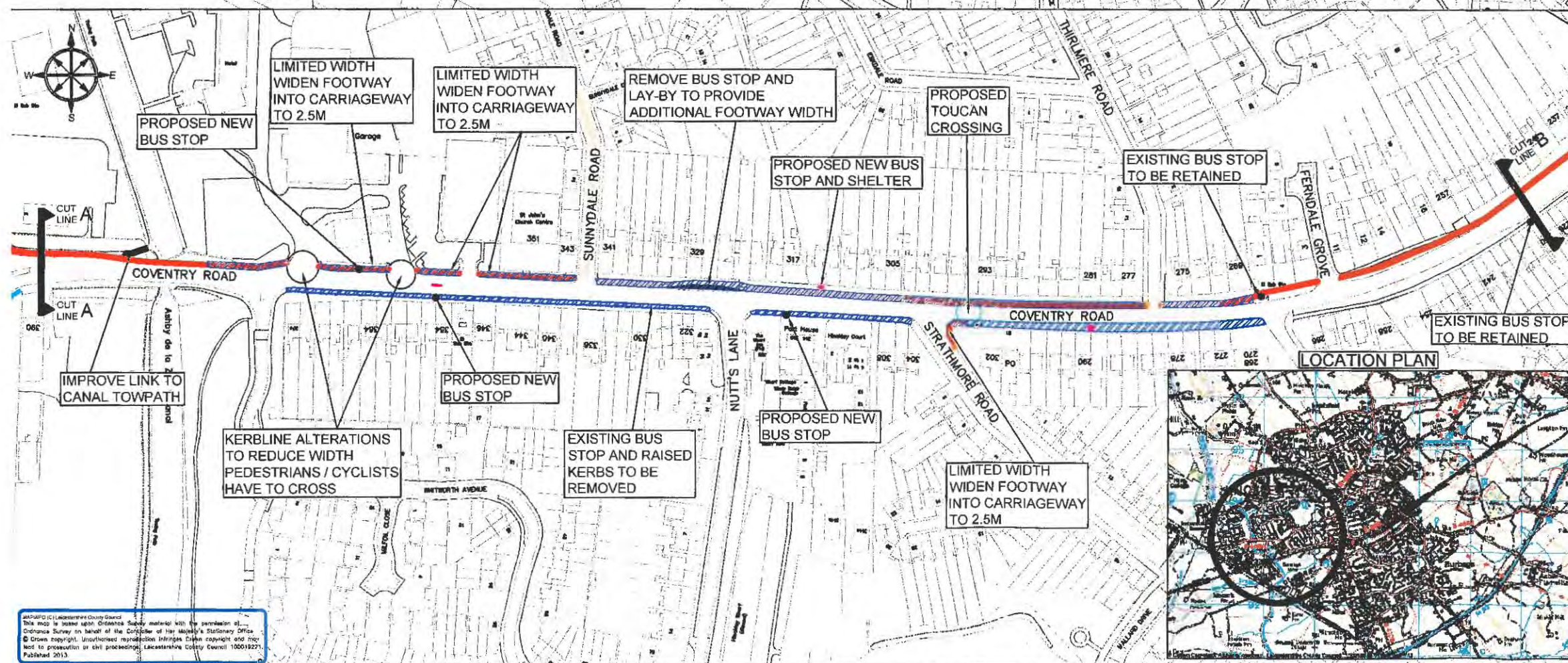
TITLE:
HINCKLEY
B4666 COVENTRY ROAD
A5 TO TOWN CENTRE
CONSULTATION PLAN

DRAWING NUMBER	SCALE
4213.000/Z1/40/1a	NOT TO SCALE

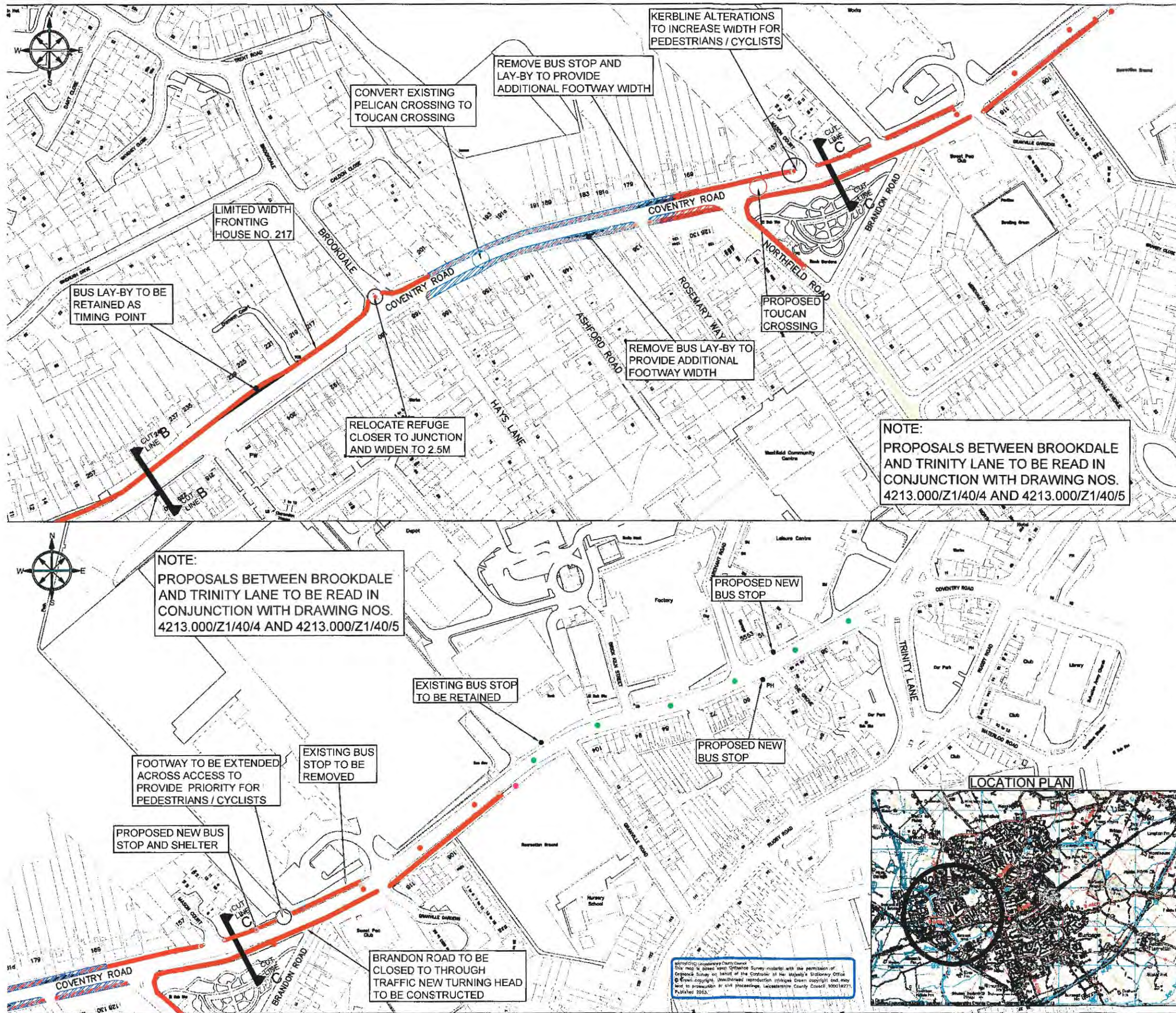
PREPARED BY: G NEAT	DATE: 14.02.14
CHECKED BY: A SMITH	SIZE: A3
APPROVED BY: M O'CONNOR	CORR. FILE:

AUTOCAD PROJECT DIR:	N:\HINCKLEY PACKAGE AREA\STH4213.000\DWG
AUTOCAD FILENAME:	4213.000.Z1.40.1a & 2a.dwg

COUNTY HALL * GLENFIELD * LEICESTER * LE3 8RJ
Tel No : 0116 3050001 Direct Dial : 0116 3050001
E Mail address: EngineeringDesignGeneral@leics.gov.uk www.leics.gov.uk



© Leicestershire County Council
This map is based upon Ordnance Survey material with the permission of
Ordnance Survey on behalf of the Controller of Her Majesty's Stationary Office.
© Crown copyright. Unauthorised reproduction infringes Crown copyright and may
lead to prosecution or civil proceedings. Leicestershire County Council 15001927.
Published 2013.



- KEY:**
- Proposed shared use footway / cycleway, widen to 3.0m where possible.
 - Proposed maintenance footway improvement / drainage scheme.
 - Proposed on carriageway cycle route highlighted with virtual cycle markings.
 - Proposed pedestrian and cycle improvements included as part of neighbouring consultations.
 - Proposed bus stop shelter and raised access kerbs.
 - Proposed tactile crossing points with flush dropped kerbs.
 - Proposed Toucan crossing facility.

Notes:

- Existing on carriageway virtual cycle lanes to be refreshed.
- Raised bus stop access kerbs to be installed at existing bus stops where possible.
- Existing street lighting columns to be relocated to back of footway where necessary.
- Dropped crossing points to be improved where appropriate.
- Vegetation overhanging the highway boundary to be cut back.
- Cycle parking to be provided at community facilities.
- Signing and Lining for proposals to be installed in suitable locations - not shown.



ENVIRONMENT AND TRANSPORT DEPARTMENT

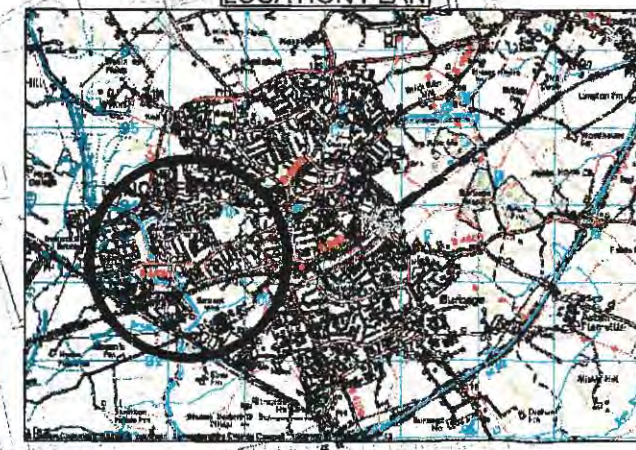
**PHIL CROSSLAND
DIRECTOR**

ENGINEERING DESIGN






CLIENT: SUSTAINABLE TRAVEL


TITLE:
**HINCKLEY
B4666 COVENTRY ROAD
A5 TO TOWN CENTRE
CONSULTATION PLAN**

DRAWING NUMBER	SCALE
4213.000/Z1/40/2a	NOT TO SCALE
PREPARED BY: G NEAT	DATE: 14.02.14
CHECKED BY: A SMITH	SIZE: A3
APPROVED BY: M O'CONNOR	CORR. FILE:
AUTOCAD PROJECT DIR: N:\HINCKLEY PACKAGE AREA\STM213.000\DWG	
AUTOCAD FILENAME: 4213.000.Z1.40.1a & 2a.dwg	
COUNTY HALL * GLENFIELD * LEICESTER * LE3 8RJ	
Tel No : 0116 3050001 Direct Dial : 0116 3050001	
E-Mail address: EngineeringDesignGeneral@leics.gov.uk www.leics.gov.uk	




Copyright © Leicestershire County Council
This map is based upon Ordnance Survey material with the permission of
Ordnance Survey on behalf of the Controller of Her Majesty's Stationary Office
© Crown copyright. Unauthorised reproduction infringes Crown copyright and may
lead to prosecution or civil proceedings. Leicestershire County Council 100019271
Published 2013.

- KEY:**
-  Existing No Waiting at any time restriction
 -  Proposed No Waiting at any time restriction
 -  Proposed No Waiting Mon-Sat, 7.30am - 6pm.
Currently Mon - Sat, 8.30am - 6.30pm
 -  Proposed No Loading
Mon-Fri 7.30 - 9.00am and 4.30 - 6.00pm
Currently 8.00 - 9.30am and 4.30 - 6.30pm
This restriction runs from the junction of Marchant Road, on the north side of Coventry Road through to Trinity Lane, to its junction with Mill Hill Road. It also extends on the south side of Coventry Road to its junction with Lancaster Road.
 -  Proposed New Bus Stop clearways - Operating times TBC



**Leicestershire
County Council**

**ENVIRONMENT AND
TRANSPORT DEPARTMENT**



**DIRECTOR
PHIL CROSSLAND**

**TRAFFIC
MANAGEMENT**

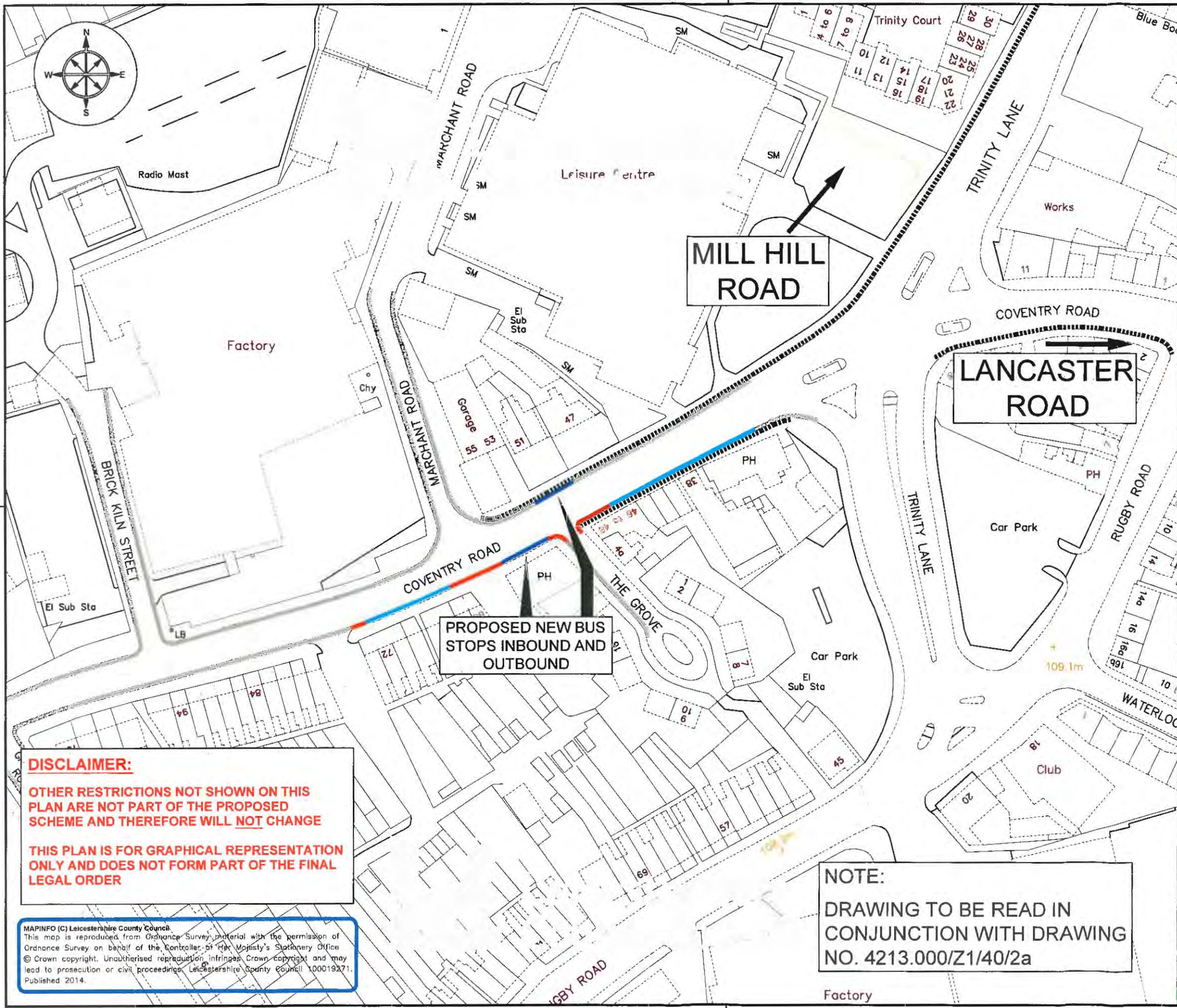
TITLE:
HINCKLEY - Proposed review of waiting restrictions, Coventry Road and Trinity Lane

DRAWING NUMBER	SCALE
4213.000.Z1.40.5	NTS
PREPARED BY: GN	DATE: 11.02.14
CHECKED BY: AS	SIZE: A3
APPROVED BY: MOC	CORR. FILE:

COUNTY HALL * GLENFIELD * LEICESTER * LE3 8ST

Tel: 01163 050001 * Fax: 0116 3050006

E-Mail address: customerservices@leics.gov.uk www.leics.gov.uk



DISCLAIMER:

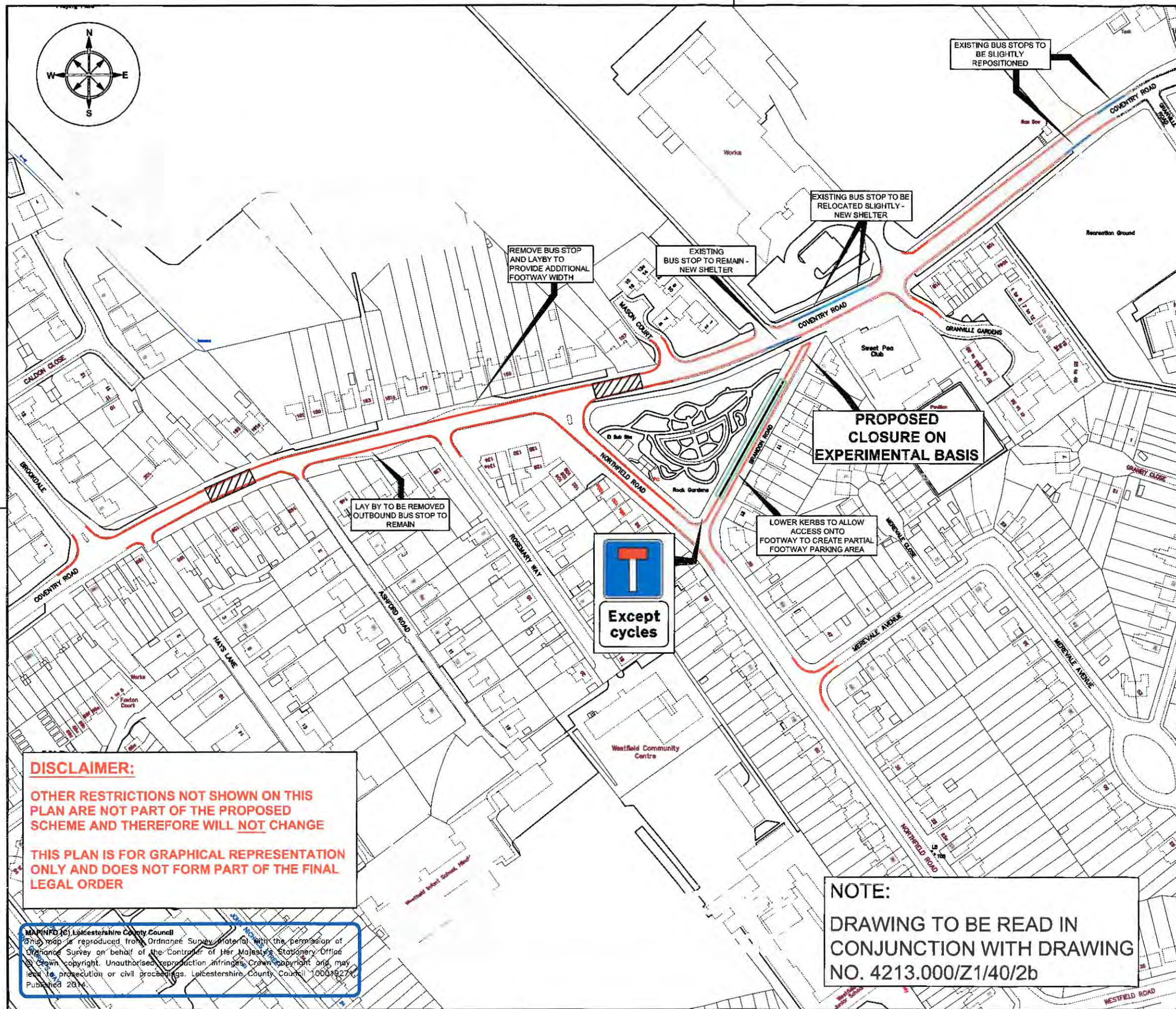
OTHER RESTRICTIONS NOT SHOWN ON THIS PLAN ARE NOT PART OF THE PROPOSED SCHEME AND THEREFORE WILL NOT CHANGE

THIS PLAN IS FOR GRAPHICAL REPRESENTATION ONLY AND DOES NOT FORM PART OF THE FINAL LEGAL ORDER

MAPINFO (C) Leicestershire County Council.
This map is reproduced from Ordnance Survey material with the permission of Ordnance Survey on behalf of the Controller of Her Majesty's Stationery Office.
© Crown copyright. Unauthorised reproduction infringes Crown copyright and may lead to prosecution or civil proceedings. Leicestershire County Council 100019271.
Published 2014.

NOTE:

DRAWING TO BE READ IN CONJUNCTION WITH DRAWING NO. 4213.000/Z1/40/2a



- KEY:**
- Existing No Waiting at Any Time restriction
 - Proposed No Waiting at Any Time restriction
 - Proposed No Waiting Mon - Sat, 7.30am - 6pm
 - Proposed Limited Waiting 2 Hours, Mon - Fri 8.00am - 6.00pm (Partial footway parking)
 - Existing/New Bus Stops to be formalised as Clearways - Operating times TBC
 - Proposed/existing crossings to be converted to Toucan operation

Revisions 28.04.14
 1. Amended parking restrictions.
 2. Closure now proposed on trial basis.
 3. Amended bus stop proposals.



**ENVIRONMENT AND
TRANSPORT DEPARTMENT**



**DIRECTOR
PHIL CROSSLAND**

**TRAFFIC
MANAGEMENT**

TITLE:
HINKLEY - Proposed review of waiting restrictions, Coventry Rd/Northfield Rd/Brandon Rd and Merevale Av.

Proposed closure of Brandon Road.

DRAWING NUMBER	SCALE
4213.000/Z1/40/4a	NTS
PREPARED BY: GN	DATE: 28.04.14
CHECKED BY: AS	SIZE: A3
APPROVED BY: MOC	CORR. FILE:

COUNTY HALL * GLENFIELD * LEICESTER * LE3 8ST
 Tel: 01163 050001 * Fax: 0116 3050006

E-Mail address: customerservices@leics.gov.uk www.leics.gov.uk

DISCLAIMER:
 OTHER RESTRICTIONS NOT SHOWN ON THIS PLAN ARE NOT PART OF THE PROPOSED SCHEME AND THEREFORE WILL NOT CHANGE

THIS PLAN IS FOR GRAPHICAL REPRESENTATION ONLY AND DOES NOT FORM PART OF THE FINAL LEGAL ORDER

MAPINFO (C) Leicestershire County Council
 This map is reproduced from Ordnance Survey material with the permission of Ordnance Survey on behalf of the Controller of Her Majesty's Stationery Office. Crown copyright. Unauthorised reproduction infringes Crown copyright and may lead to prosecution or civil proceedings. Leicestershire County Council 100019274
 Published 2014

NOTE:
 DRAWING TO BE READ IN CONJUNCTION WITH DRAWING NO. 4213.000/Z1/40/2b