

ROAD TRAFFIC REGULATION ACT 1984
LANCASHIRE COUNTY COUNCIL
(PRESTON CITY CENTRE, PRESTON CITY)
(REVOCATION AND BUS LANES) ORDER 2019

The County Council of Lancashire ("the Council") in exercise of its powers under Sections 1, 2 and 4 of and Part IV of Schedule 9 to the Road Traffic Regulation Act 1984, as amended ("the Act") and of all other enabling powers, after consultation with the Chief Officer of Police in accordance with Part III of Schedule 9 to the Act, hereby make the following Order: -

1. Definitions and Interpretation

For all the purposes of this Order the terms described in this Article shall have the meanings specified:

- a) "**Authorised Vehicle**" means a vehicle which has been authorised in writing by the Council for the purposes of this Order and which is being used to access the land shown edged red on the plan appended to this Order;
- b) "**Bus**" means motor vehicles constructed or adapted to carry more than 8 passengers (exclusive of the driver); and Local Buses not so constructed or adapted;
- c) "**Bus Gate**" means a short length of Bus Lane;
- d) "**Bus Only Street**" means a Bus Lane;
- e) "**Bus Lane**" means an area of road that may be used only by Buses (or a particular description of Bus), or only by buses (or a particular description of Bus) and some other class or classes of vehicular traffic as provided for in this Order and includes the terms Bus Gate and Bus Only Street;
- f) "**Civil Enforcement Officer**" means a person authorised by or on behalf of Lancashire County Council in accordance with Section 76 of the Traffic Management Act 2004;
- g) "**Local Bus**" means a Public Service Vehicle used for the provision of a Local Service not being an excursion or tour as defined in the Traffic Signs Regulations and General Directions 2016;
- h) "**Local Service**" has the meaning given in Section 2 of the Transport Act 1985;
- i) "**Pedal Cycle**" means a unicycle, bicycle, tricycle, or cycle having four or more wheels, not being in any case mechanically propelled unless it is an electrically assisted pedal cycle of such class as is to be treated as not being a motor vehicle for the purposes of the 1984 Act;
- j) "**Public Service Vehicle**" has the meaning given in Section 1 of the Public Passenger Vehicles Act 1981;
- k) "**Taxi**" means a vehicle licensed under Section 37 of the Town Police Clauses Act 1847;
- l) "**Vehicle**" means a motor vehicle, a passenger vehicle, a dual-purpose vehicle, a goods vehicle, a motorcycle or an invalid carriage or any other vehicle of any description whether drawn or propelled along a road by animal or mechanical power.

2. Revocations

- a) "The Borough of Preston (Fishergate and Fishergate Hill) (Bus lanes and One way) Road Traffic Order 1993" is hereby revoked in full.
- b) The "Borough of Preston (Fishergate) (Prohibition and Restriction of Traffic) Order 1979" is hereby revoked in full.
- c) The "Preston Borough Council, Borough of Preston (Fishergate) (Bus Priority Lane) Order 1998" is hereby revoked in full.
- d) The "Lancashire County Council (Fishergate, Preston, Preston City) (Bus Gate and Bus only Street) Order 2017" is hereby revoked in full.
- e) That part of the "Preston Borough Council, Borough of Preston (Church Street) (Bus Priority Lane) Order 1998" as set out in Schedule 1 to this Order is hereby revoked.

3. Bus Gate

Save as is hereinafter provided, no person shall, except upon the direction or with the permission of a police constable in uniform, or a Civil Enforcement Officer, cause or permit any Vehicle other than a Bus or Pedal Cycle to be in the Bus Lane set out in Schedule 2 to this Order.

4. Bus Only Street - 11am until 6pm

Save as is hereinafter provided, no person shall, except upon the direction or with the permission of a police constable in uniform, or a Civil Enforcement Officer, cause or permit any Vehicle other than a Bus, Authorised Vehicle, Pedal Cycle or Taxi to be in the Bus Lane set out in Schedule 3 to this Order on any day between 11am and 6pm.

5. Bus Only Street

Save as is hereinafter provided, no person shall, except upon the direction or with the permission of a police constable in uniform, or a Civil Enforcement Officer, cause or permit any Vehicle other than a Bus, Pedal Cycle or Taxi to be in the Bus Lane set out in Schedule 4 to this Order at any time.

NB in accordance with section 3(2) of the Act, the council is satisfied that:

- (i) for avoiding and preventing the likelihood of danger to persons or other traffic using the road to which the order relates or any other road; and
 - (ii) for preserving or improving the amenities of an area by prohibiting or restricting the use on a road or roads in that area of heavy commercial Vehicles,
- it is requisite that the provisions of section 3(1) of the Act should not apply to the restriction contained herein.

6. Bus Lane

Save as is hereinafter provided, no person shall, except upon the direction or with the permission of a police constable in uniform, or a Civil Enforcement Officer, cause or permit any Vehicle other than a Bus or Pedal Cycle to be in the Bus Lane set out in Schedule 5 to this Order on any day at any time.

7. Exemptions

Nothing in Articles 3, 4, 5 or 6 of this Order shall render it unlawful to cause or permit any Vehicle to be in the Bus Lanes referred to therein for so long as may be necessary to enable:

- a) The liveried Vehicle to be used for fire brigade, ambulance or police purposes and whilst performing its statutory duties;

- b) the Vehicle to avoid an accident;
- c) the Vehicle to be used for the purposes of a local authority in pursuance of statutory powers or duties if it cannot conveniently be used for such purpose in any other road;
- d) the Vehicle, if it cannot conveniently be used for such purpose in any other road to be used in connection the removal of any obstruction to traffic;
- e) A Royal Mail liveried Vehicle engaged in the collection and/or delivery of letters to premises adjacent to the Bus Lane in accordance with the statutory provisions set out in the Postal Services Act 2000;
- f) The Vehicle, to be used for or in connection with:-
 - i) building, industrial or demolition operations in or on land adjacent to the Bus Lane or removals from land or buildings adjacent to the Bus Lane if the prior written consent of the Council has been received;
 - ii) the laying, erection, alteration or repair of a sewer, pipe or apparatus for the supply of water, gas, electricity or telecommunications apparatus in or on land adjacent to the Bus Lane; or
 - iii) the maintenance, improvement or reconstruction of the Bus Lane.

8. Miscellaneous

The prohibitions imposed by this Order shall be in addition to and not in derogation of any restrictions or requirements imposed by any regulations made, or having effect as if made, under the Act or by or under any other enactment.

9. Commencement of Order

This Order shall come into force on the 28th day of January 2019 and may be cited as the "Lancashire County Council (Preston City Centre, Preston City) (Revocation and Bus Lanes) Order 2019".

Dated this 23rd day of January 2019.

THE COMMON SEAL of the Lancashire County Council was hereunto affixed following a decision made on the 13th day of September 2018 by The Cabinet.



Authorised Signatory

A handwritten signature in black ink, appearing to be 'N. ...', written over a horizontal line.

Schedule 1 – Revocation

The whole of the First Schedule

Schedule 2 - Bus Gate

Fishergate (Eastbound carriageway only), Preston, from a point 13 metres east of its junction with Butler Street for a distance of 10 metres in an easterly direction.

Schedule 3 – Bus Only Street (11am until 6pm)

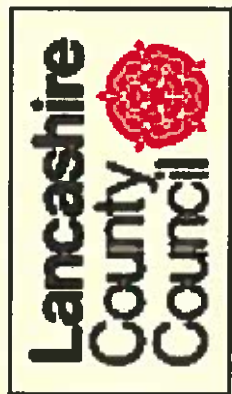
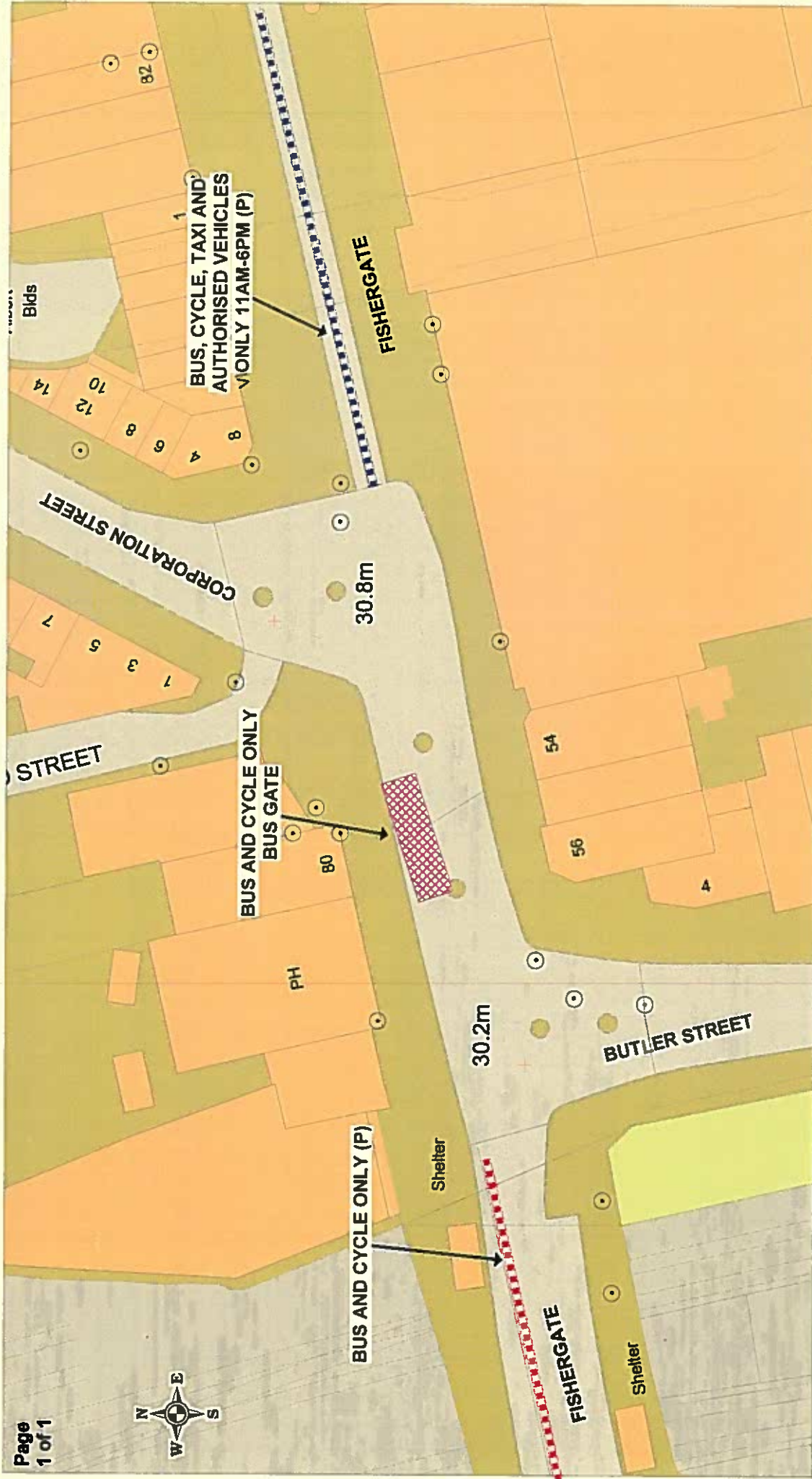
Fishergate, Preston, from its junction with Mount Street to its junction with Corporation Street.

Schedule 4 – Bus Only Street

Fishergate, Preston, from its junction with Glovers Court to its junction with Canon Street.

Schedule 5 – Bus Lane

Fishergate Hill, Preston, on the north-east bound carriageway for its entire length, from its junction with Strand Road (A5072) to its junction with Butler Street.

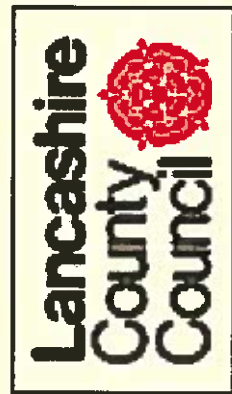
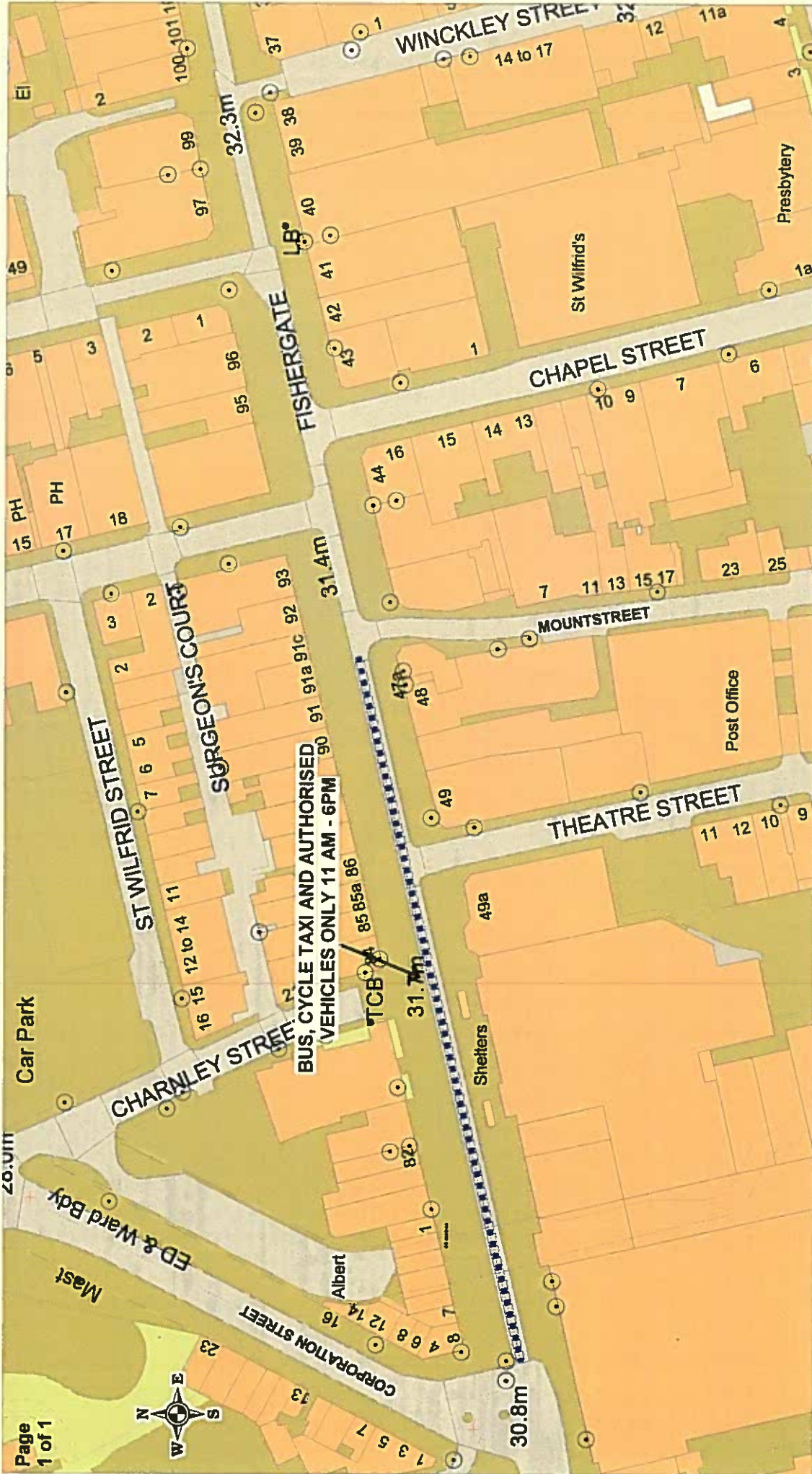


**Fishergate Preston
Bus Gate
(bus and cycle only)**

**Community Services
Phil Barrett
Director Community Services**
P.O. Box 100, County Hall,
PRESTON PR1 0LD

* Drawn by: All rights reserved
Lancashire County Council
Lancaster 2008

SCALE	1 : 500
DATE	10/05/2018
DRAWING No.	PBLCon2018 2 a
DRAWN BY	Chris Nolan
Scale with care as distortion may occur	



Fishergate Preston
Bus lane
Bus, Cycle, Taxi and
Authorised Vehicle only
(11am -6pm)

Community Services
Phil Barrett
Director Community Services
 P.O. Box 100, County Hall,
 PRESTON PR1 0LD

SCALE	1 : 1000
DATE	10/05/2018
DRAWING No.	PBLCon 2018-3a
DRAWN BY	Chris Nolan
	Scale with care as distortion may occur

* Crown copyright. All rights reserved. Licensed under the Open Government Licence v. 3.0

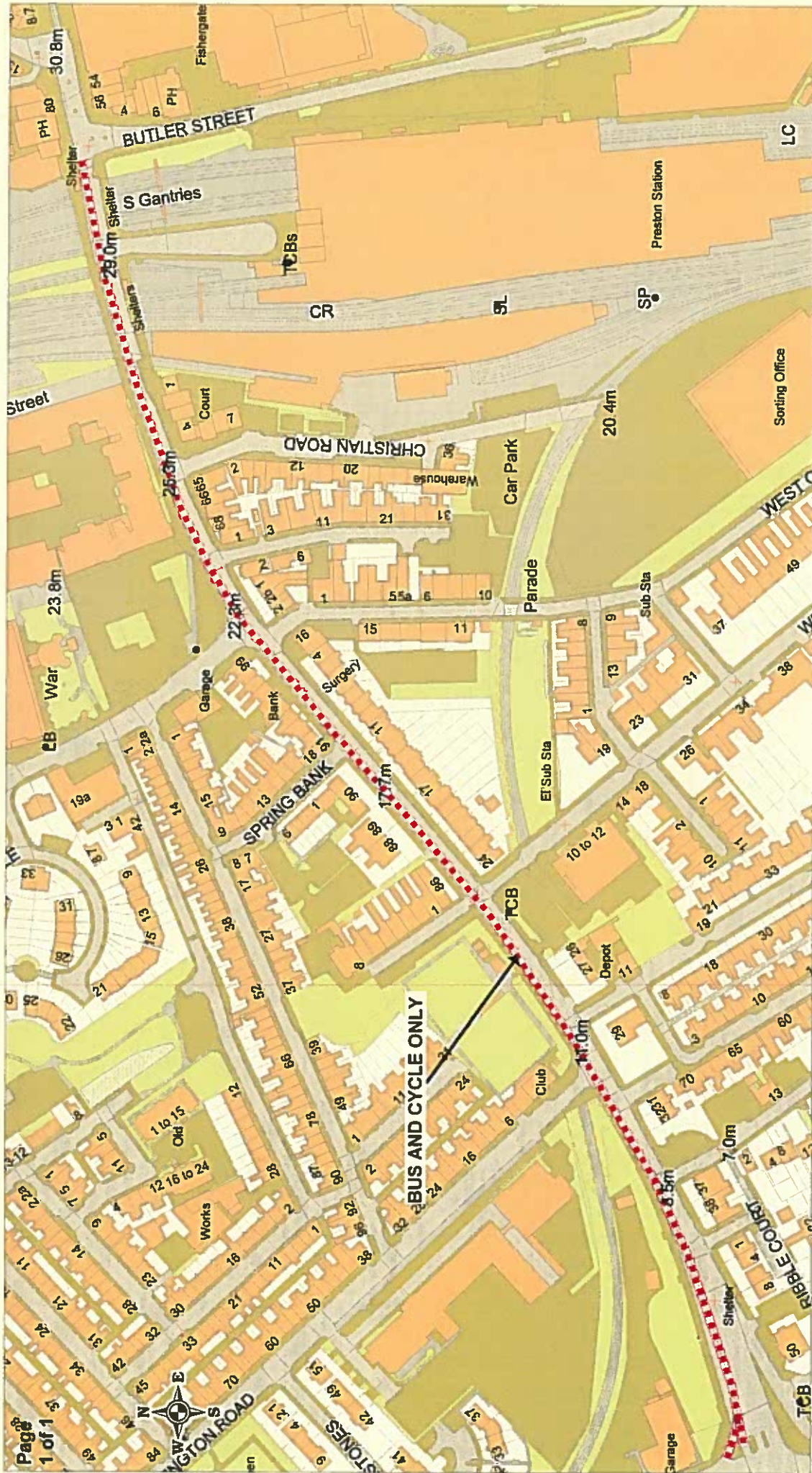


Fishergate Preston
Bus Lane
Bus, Cycle and Taxi Only

Community Services
Phil Barrett
Director Community Services
 P.O. Box 100, County Hall,
 PRESTON PR1 0LD

SCALE	1 : 500
DATE	10/05/2018
DRAWING No.	PBLCon 2018-4a
DRAWN BY	Chris Nolan
Scale with care as distortion may occur	

* Crown copyright. All rights reserved.
 Licensed under the Open Government Licence v3.0

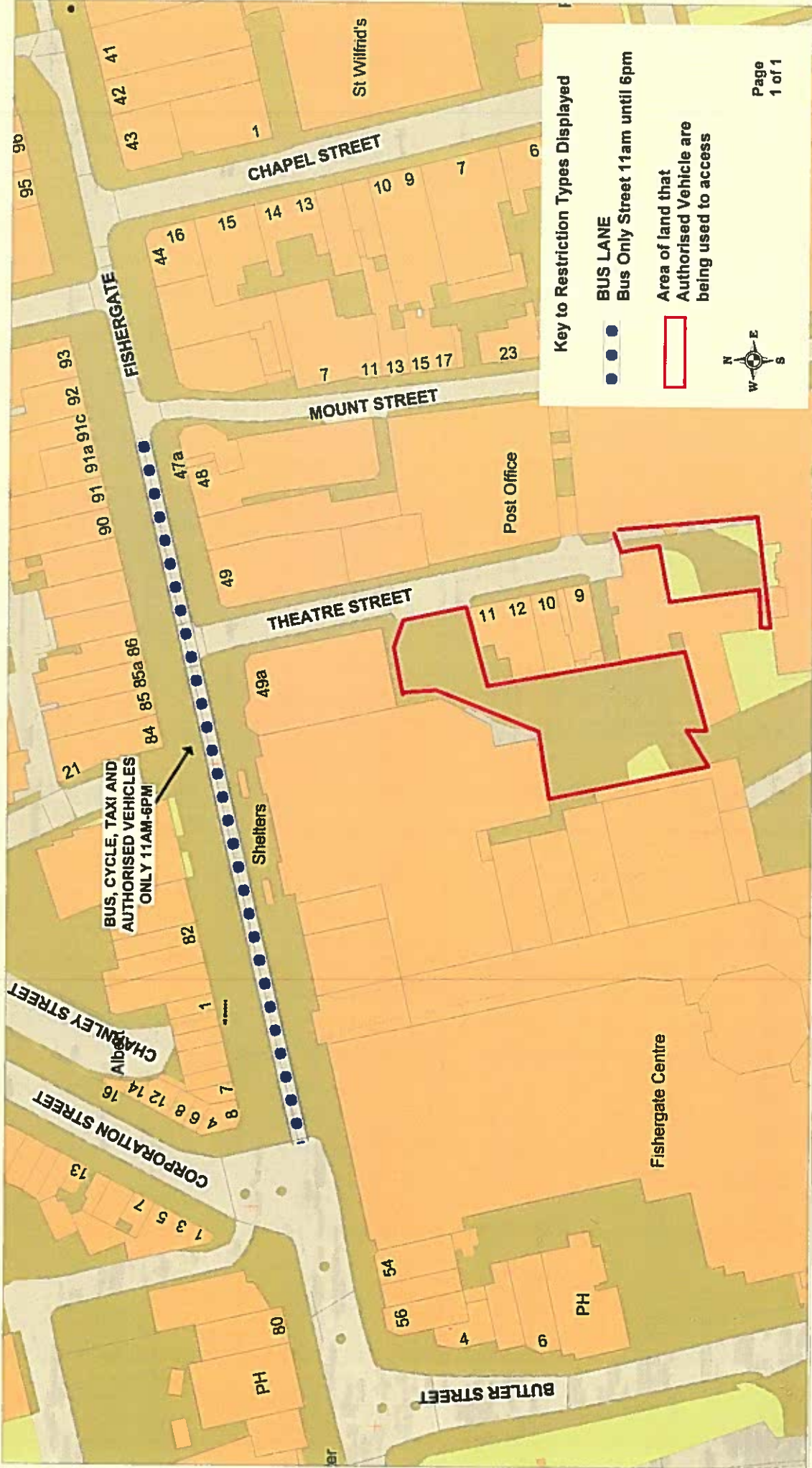


**Fishergate Hill - Fishergate
Preston
Bus Lane
Bus and cycle lane only**

**Community Services
Phil Barrett
Director Community Services**
P.O. Box 100, County Hall,
PRESTON PR1 0LD

SCALE	1 : 2500
DATE	10/05/2018
DRAWING No.	PBLCon 2018 - 1a
DRAWN BY	Chris Nolan
	Scale with care as distortion may occur

1. Community Services
2. Community Services
3. Community Services
4. Community Services
5. Community Services
6. Community Services
7. Community Services
8. Community Services
9. Community Services
10. Community Services
11. Community Services
12. Community Services
13. Community Services
14. Community Services
15. Community Services
16. Community Services
17. Community Services
18. Community Services
19. Community Services
20. Community Services
21. Community Services
22. Community Services
23. Community Services
24. Community Services
25. Community Services
26. Community Services
27. Community Services
28. Community Services
29. Community Services
30. Community Services
31. Community Services
32. Community Services
33. Community Services
34. Community Services
35. Community Services
36. Community Services
37. Community Services
38. Community Services
39. Community Services
40. Community Services
41. Community Services
42. Community Services
43. Community Services
44. Community Services
45. Community Services
46. Community Services
47. Community Services
48. Community Services
49. Community Services
50. Community Services
51. Community Services
52. Community Services
53. Community Services
54. Community Services
55. Community Services
56. Community Services
57. Community Services
58. Community Services
59. Community Services
60. Community Services
61. Community Services
62. Community Services
63. Community Services
64. Community Services
65. Community Services
66. Community Services
67. Community Services
68. Community Services
69. Community Services
70. Community Services
71. Community Services
72. Community Services
73. Community Services
74. Community Services
75. Community Services
76. Community Services
77. Community Services
78. Community Services
79. Community Services
80. Community Services
81. Community Services
82. Community Services
83. Community Services
84. Community Services
85. Community Services
86. Community Services
87. Community Services
88. Community Services
89. Community Services
90. Community Services
91. Community Services
92. Community Services
93. Community Services
94. Community Services
95. Community Services
96. Community Services
97. Community Services
98. Community Services
99. Community Services
100. Community Services



Key to Restriction Types Displayed

- BUS LANE**
Bus Only Street 11am until 6pm
- Area of land that Authorised Vehicle are being used to access**

Page
1 of 1



SCALE	1 : 1000
DATE	25/01/2019
DRAWING No.	PBLCon 2018-5a
DRAWN BY	TJP
	Scale with care as distortion may occur

Community Services
Sue Harper
Director Community Services
 P.O. Box 100, County Hall,
 PRESTON PR1 0LD

Fishergate, Preston Bus Lane
Bus Only Street 11am-6pm
(Bus, Cycle, Taxi and
Authorised Vehicle Only

