

**ROAD TRAFFIC REGULATION ACT 1984**  
**LANCASHIRE COUNTY COUNCIL**

**(BULL STREET, CURZON STREET, MANCHESTER ROAD, ST JAMES'S ROW, ST JAMES'S STREET,  
THE MALL, BURNLEY BOROUGH) (REVOCATION, PROHIBITION OF WAITING, PROHIBITION OF  
LOADING, DISABLED PARKING PLACE AND GOODS VEHICLE LOADING BAY) ORDER 2018**

The County Council of Lancashire ("the Council") in exercise of its powers under Sections 1, 2 and 4 and Part IV of Schedule 9 to the Road Traffic Regulation Act 1984, as amended ("the Act") and of all other enabling powers, after consultation with the Chief Officer of Police in accordance with Part III of Schedule 9 to the Act, hereby make the following Order: -

**1. Definitions and Interpretation**

For all the purposes of this Order the terms described in this Article shall have the meanings specified:

- a) "**Centreline**" means the centre line of a highway as shown on Ordnance Survey graphical information systems at the time that the Order was prepared.
- b) "**Civil Enforcement Officer**" means a person authorised by or on behalf of Lancashire County Council in accordance with Section 76 of the Traffic Management Act 2004.
- c) "**Disabled Person's Vehicle**" means a Vehicle displaying a Disabled Person's Badge in the circumstances prescribed in Regulations 13, 14, 15 or 16 of The Disabled Persons (Badges for Motor Vehicles) (England) Regulations 2000.
- d) "**Disabled Person's Badge**" means a badge which was -
  - i) issued, or has effect as if issued, to a disabled person or an institution under The Disabled Persons (Badges for Motor Vehicles) (England) Regulations or under regulations having effect in Scotland or Wales under Section 21 of the Chronically Sick and Disabled Persons Act 1970; and
  - ii) has not ceased to be in force.
- e) "**Goods Vehicle**" has the same meaning as in section 192 (1) of the Road Traffic Act 1988.
- f) "**Loading**" and "**Unloading**" means the continuous transference from (or to) a Vehicle to (or from) premises adjacent to where the Vehicle is parked of heavy or unmanageable Goods that are not designed to be carried by hand other than over a very short distance.
- g) "**Parking Disc**" means a device which -
  - i) is 125 millimetres square and coloured blue, if issued on or after 1<sup>st</sup> April, 2000 or orange if issued before that date;
  - ii) has been issued by a local authority and has not ceased to be valid; and
  - iii) is capable of showing the quarter hour period during which a period of waiting has begun.
- i) "**Parking Place**" Means an area of road authorised by this Order to be used as a parking place, bay or space.
- j) "**Penalty Charge Notice**" means a notice served by a Civil Enforcement Officer pursuant to the provisions of section 78 of the 2004 Act and supporting regulations.
- k) A Vehicle displays a Disabled Person's Badge or Parking Disc in the "**Relevant Position**" if -
  - i) the badge/disc is exhibited on the dashboard or fascia of the Vehicle, or

ii) where the Vehicle is not fitted with a dashboard or fascia the badge/disc is exhibited in a conspicuous position on the Vehicle, so that the front of the badge/disc is clearly legible from the outside of the Vehicle.

i) "Vehicle" means a motor vehicle, a passenger vehicle, a dual-purpose vehicle, a goods vehicle, a motorcycle or an invalid carriage or any other vehicle of any description whether drawn or propelled along a road by animal or mechanical power;

## **2. Revocation**

The following provisions of the "Lancashire County Council (Burnley Area) (On Street Parking Places, Prohibition And Restriction Of Waiting) Consolidation Order 2009" are hereby revoked:

- i) Item 55 of Schedule 2.01;
- ii) Item 2 of Schedule 8.01;
- iii) Items 65(a)(ii), 186(b)(v), 186(d)(i) and 186(d)(ii) of Schedule 10.01;
- iv) Item 25(b) of Schedule 11.008;
- v) Item 14(b) of Schedule 13.01;

## **3. Prohibition of Waiting**

Save as is hereinafter provided, no person shall, except upon the direction or with the permission of a police constable in uniform, or a Civil Enforcement Officer, cause or permit any Vehicle to wait at any time, on any day, in the lengths of road set out in Schedule 1 to this Order.

## **4. Prohibition of Loading**

Save as is hereinafter provided, no person shall, except upon the direction or with the permission of a police constable in uniform, or a Civil Enforcement Officer, cause or permit any Vehicle to wait at any time on any day for the purposes of Loading or Unloading in the lengths of road set out in Schedule 2 to this Order.

## **5. Disabled Persons Parking Place**

Save as is hereinafter provided, no person shall, except upon the direction or with the permission of a police constable in uniform, or a Civil Enforcement Officer, cause or permit any Vehicle other than a Disabled Persons Vehicle to wait in the Parking Places set out in Schedule 3 to this Order.

## **6. Goods Vehicle Loading Bay**

Save as is hereinafter provided, no person shall, except upon the direction or with the permission of a police constable in uniform, or a Civil Enforcement Officer, cause or permit any Vehicle other than a Goods Vehicle engaged in Loading or Unloading to wait in the Parking Places set out in Schedule 4 to this Order, at any time on any day.

## **7. General Exceptions**

Nothing in Articles 3, 4, 5 and 6 of this Order shall render it unlawful to cause or permit any Vehicle to wait in the lengths of road referred to therein for so long as may be necessary to enable :-

- a) a person to board or alight the Vehicle;
- b) if it cannot conveniently be used for such purpose in any other road to be used in connection with any of the following:-
  - i) building, industrial or demolition operations;
  - ii) the removal of any obstruction to traffic;
  - iii) the maintenance, improvement or reconstruction of the said lengths of road;
  - iv) the laying, erection, alteration or repair in or near land adjacent to the said lengths of road of any sewer or of any main, pipe or apparatus or the exercise of any other

statutory power or duty for the maintenance and supply of gas, water or electricity or of any telecommunications system as defined in Section 4 of the Telecommunications Act 1984;

c) the Vehicle to be used for the purposes of a local authority in pursuance of statutory powers or duties if it cannot conveniently be used for such purpose in any other road;

d) the Vehicle to be used for fire brigade, ambulance or police purposes in pursuance of statutory powers or duties;

### **8. Additional Exemptions**

Nothing in Articles 3 or 5 to this Order shall render it unlawful to cause or permit any Vehicle to wait in the lengths of road referred to therein for so long as may be necessary to enable;

a) goods to be loaded on to or unloaded from the Vehicle;

b) A Royal Mail liveried Vehicle engaged in the collection and/or delivery of letters in accordance with the statutory provisions as defined in the Postal Services Act 2000;

c) the Vehicle to wait at or near to any premises situated on or adjacent to the said length of road for so long as such waiting by the Vehicle is reasonably necessary in connection with any wedding or funeral.

### **9. Exemption for Disabled Person's Vehicle**

Nothing in Article 3 of this Order shall render it unlawful to cause or permit any Vehicle to wait in the length of road referred to therein for a period not exceeding three hours (not being a period separated by an interval of less than one hour from a previous period of waiting by the same Vehicle in the same length of road on the same day) if the Vehicle is a Disabled Person's Vehicle which displays in the Relevant Position both a Disabled Person's Badge and a Parking Disc marked to show the quarter hour period during which the period of waiting began.

### **10. Emergency Exemptions**

Nothing in this Order shall render it unlawful to cause or permit any Vehicle to wait in the lengths of road referred to therein when the person in control of the Vehicle:

- i. Is required by law to stop
- ii. Is obliged to stop in order to avoid an accident; or
- iii. Is prevented from proceeding along the road due to circumstances beyond his/her control

### **11. Manner of standing in a Parking Place**

a) The driver of a motor Vehicle using a Parking Place shall stop the engine as soon as the Vehicle is in a position in the Parking Place and shall not start the engine except when about to change the position of the Vehicle in or, or depart from, the Parking Place.

b) Every Vehicle left in a Parking Place in accordance with the foregoing provisions of this Order shall be left so that every part of the Vehicle is within the limits of the Parking Place.

c) A driver of a Vehicle shall not use a Parking Place so as unreasonably to prevent access to any premises adjoining a road or the use of a road by other persons or so as to be a nuisance.

### **12. Alteration of position of a Vehicle in a Parking Place**

Where any Vehicle is left standing in a Parking Place in contravention of the provisions of Article 11 of this Order, a police constable in uniform or a civil enforcement officer may alter or cause to be altered the position of the Vehicle in order that its position shall comply with those provisions.

### **13. Removal of a Vehicle from a Parking Place**

Where a police constable in uniform or a civil enforcement officer is of the opinion that any of the provisions contained in Article 11 of this Order have been contravened or not complied with in

respect of a Vehicle left in a Parking Place, he/she may remove or cause to be removed the Vehicle from the said Parking Place, and where it is so removed, shall provide for the safe custody of the said Vehicle.

#### **14. Movement of a Vehicle in a Parking Place in an Emergency**

- a) A police constable in uniform or a civil enforcement officer may in case of emergency move or cause to be moved any Vehicle left in a Parking Place to any place he thinks fit and shall provide for the safe custody of the Vehicle.
- b) A person causing or permitting a Vehicle to wait in a Parking Place by virtue of the provisions of Article 10 of this Order shall take all such steps as are necessary to ensure that in the case of a Parking Place it shall stand in accordance with Article 11 so that every part of the Vehicle is within the limits of the Parking Place.

#### **15. Power to suspend use of Parking Places**

- a) The Council's duly authorised officer may suspend the use of a Parking Place or any part thereof whenever he/she considers such suspensions reasonably necessary and make such charge for the administration of this service, as may from time to time be determined by the Council.
- b) A police constable in uniform may suspend for not longer than 7 days the use of a Parking Place or any part thereof whenever he/she considers such suspension reasonably necessary for the purpose of mitigating congestion or obstruction of traffic or a danger to or from traffic in consequence of extraordinary circumstances.
- c) Any persons suspending the use of a Parking Place or any part thereof in accordance with the provisions of paragraph a) or b) of this Article shall thereupon place or cause to be placed in or adjacent to any part of that Parking Place the use of which is suspended, an authorised Traffic Sign or cone indicating that waiting by Vehicles is prohibited.
- d) No person shall cause or permit a Vehicle to be left in any part of a Parking Place during such period when an authorised Traffic Sign or cone is placed in or adjacent to that part of the Parking Place pursuant to paragraph c) of this Article provided that this paragraph shall not apply to a Vehicle:
  - i) being used by the respective Fire or Police Authority or Ambulance Health Trust to deal with an emergency; or
  - ii) being used for any purpose specified in Article 10; or
  - iii) left in such Parking Place with the permission of the person suspending the use of the Parking Place.

#### **16. Restriction of use of a Vehicle in a Parking Place**

While any Vehicle is in the lengths of road set out in the schedule to this Order no person shall use the said Vehicle in connection with the sale of any article to any person in or near the Parking Place or in connection with the selling of or offering for sale of his/her skills or services.

#### **17. Miscellaneous**

The prohibition imposed by this Order shall be in addition to and not in derogation of any restrictions or requirements imposed by any regulations made, or having effect as if made, under the Act or by or under any other enactment.

#### **18. Effect of Contravention**

Failure by a person to comply with any prohibition or restriction contained within this order or any subsequent orders shall constitute a contravention of the same and shall result in the issue by Lancashire County Council and/or its Agents of a Penalty Charge Notice which shall be payable by

such persons in accordance with the legislation.

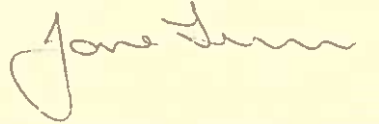
### **19. Commencement of Order**

This Order shall come into force on the 19<sup>th</sup> day of February 2018 and may be cited as the "Lancashire County Council (Bull Street, Curzon Street, Manchester Road, St James's Row, St James's Street, The Mall, Burnley Borough) (Revocation, Prohibition Of Waiting, Prohibition Of Loading, Disabled Parking and Goods Vehicle Loading Bay) Order 2018".

Dated this 14<sup>th</sup> day of February 2018.

THE COMMON SEAL of the Lancashire County Council was hereunto affixed pursuant to the scheme of delegation to chief officers

Authorised Signatory



### **Schedule 1 – Prohibition of Waiting**

- a) Bull Street, Burnley, the northerly side, from the Centreline Manchester Road for a distance of 10 metres in a westerly direction;
- b) Bull Street, Burnley, the southerly side, from its junction with Manchester Road to a point 10 metres from its intersection with the Centreline of Manchester Road in a north westerly direction;
- c) Curzon Street, Burnley, the east side, from a point 32 metres north of the Centreline of St James's Street for a distance of 33 metres in a northerly direction;
- d) Curzon Street, Burnley, the east side, from a point 75 metres north of the Centreline of St James's Street to its junction with Bankfield;
- e) Curzon Street, Burnley, the east side, from the Centreline St James's Street for a distance of 18 metres in an easterly direction;
- f) Curzon Street, Burnley, the west side, from its junction with St James's Street to its junction with Bankfield;
- g) Manchester Road, Burnley, the north-west side, from the Centreline Bull Street for a distance of 15 metres in a south-westerly direction;
- h) Manchester Road, Burnley, the north-west side, from the Centreline Bull Street for a distance of 10 metres in a north-easterly direction;
- i) Manchester Road, Burnley, the north-west side, from a point 19 metres north-east of the Centreline of Bull Street to its junction with St James's Street;
- j) Manchester Road, Burnley, the south-east side, from a point 21 metres north-east of the Centreline of Red Lion Street for a distance of 4 metres in a north-easterly direction;
- k) St James's Street, Burnley, the north side, from the Centreline Curzon Street for a distance of 28 metres in an easterly direction;
- l) St James's Street, Burnley, the southerly side, from its junction with Manchester Road for a distance of 53 metres in a westerly direction;
- m) St James's Street, Burnley, the north side, from a point 50 metres east of the centreline of Hammerton Street for a distance of 20 metres in an easterly direction.
- n) St James's Street, Burnley, the north side, from a point 82 metres east of the centreline of Hammerton Street for a distance of 102 metres in an easterly direction.
- o) St James's Street, Burnley, the south side, from a point 72 metres west of the centreline of Manchester Road for a distance of 85 metres in a westerly direction.
- p) St James's Street, Burnley, the south side, from a point 172 metres west of the centreline of Manchester Road to the junction with Hammerton Street.

### **Schedule 2 – Prohibition of Loading/Unloading**

- a) Bull Street, Burnley, the northerly side, from the Centreline Manchester Road for a distance of 10 metres in a south-westerly direction;
- b) Bull Street, Burnley, the southerly side, from its junction with Manchester Road to a point 10 metres from its intersection with the Centreline of Manchester Road in a north westerly direction;
- c) Curzon Street, Burnley, the east side, from a point 75 metres north of the Centreline of St James's Street to its junction with Bankfield;
- d) Curzon Street, Burnley, the east side, from the Centreline St James's Street for a distance of 18 metres in a northerly direction;
- e) Curzon Street, Burnley, the easterly side, from a point 32 metres north of the Centreline of St James's Street for a distance of 33 metres in a northerly direction;
- f) Curzon Street, Burnley, the westerly side, from its junction with St James's Street to its junction with Bankfield;
- g) Manchester Road, Burnley, the north-west side, from the Centreline Bull Street for a distance of 10 metres in a north-easterly direction;
- h) Manchester Road, Burnley, the north-west side, from a point 19 metres north-east of the Centreline of Bull Street to its junction with St James's Street;
- i) Manchester Road, Burnley, the south-east side, from a point 21 metres north-east of the Centreline of Red Lion Street for a distance of 4 metres in a north-easterly direction;
- j) Manchester Road, Burnley, the westerly side, from the Centreline Bull Street for a distance of 10 metres in a south-westerly direction;
- k) St James's Street, Burnley, the north side, from the Centreline Curzon Street for a distance of 28 metres in an easterly direction;
- l) St James's Street, Burnley, the north side, from a point 50 metres east of the Centreline of Hammerton Street for a distance of 20 metres in an easterly direction;
- m) St James's Street, Burnley, the north side, from a point 82 metres east of the Centreline of Hammerton Street for a distance of 102 metres in an easterly direction;
- n) St James's Street, Burnley, the south side, from the Centreline Manchester Road for a distance of 53 metres in a westerly direction;
- o) St James's Street, Burnley, the south side, from a point 72 metres west of the centreline of Manchester Road for a distance of 85 metres in a westerly direction.
- p) St James's Street, Burnley, the south side, from a point 172 metres west of the centreline of Manchester Road to the junction with Hammerton Street.

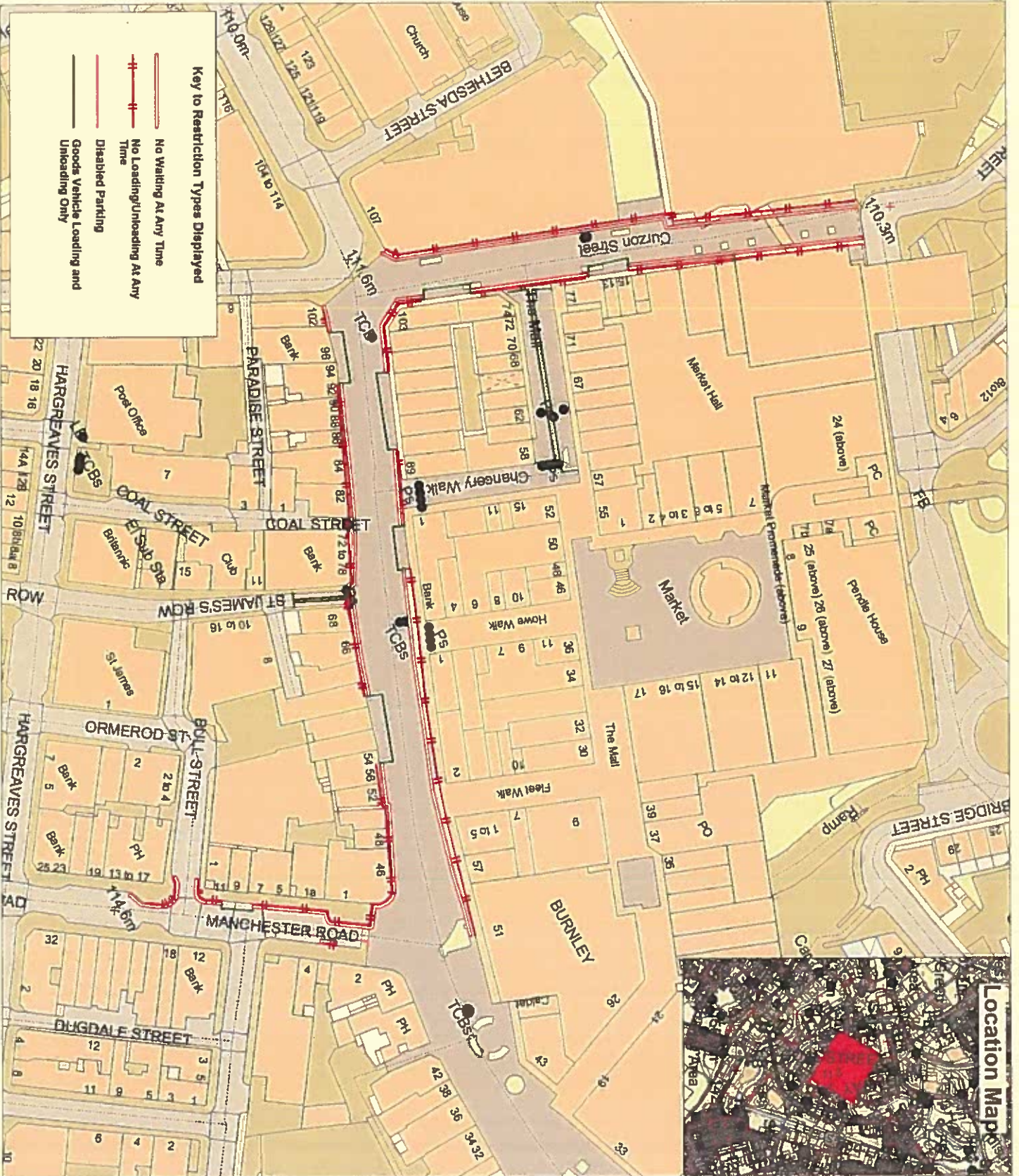
### **Schedule 3 – Disabled Parking Place**

- a) Manchester Road, Burnley, the south-east side, from a point 8 metres north-east of the Centreline of Red Lion Street for a distance of 13 metres in a north-easterly direction;
- b) Manchester Road, Burnley, the south-east side, from a point 25 metres north-east of its junction with Red Lion Street for a distance of 9 metres in a north-easterly direction.

### **Schedule 4 – Goods Vehicle Loading Bay**

- a) Manchester Road, Burnley, the north-western side, from a point 10 metres north-east of the Centreline of Bull Street to a point 19 metres from its intersection with the Centreline of Bull Street in a northerly direction;
- b) St James's Row, Burnley, both sides, from its junction with St James's Street for a distance of 15 metres in a south-westerly direction.
- c) Curzon Street, Burnley, the east side, from a point 18 metres north of the centreline of St James's Street for a distance of 14 metres in a northerly direction.
- d) Curzon Street, Burnley, the east side, from a point 65 metres north of the centreline of St James's Street for a distance of 10 metres in a northerly direction.

- e) St James's Street, Burnley, the north side, from a point 28 metres east of the centreline of Hammerton Street for a distance of 22 metres in an easterly direction.
- f) St James's Street, Burnley, the north side, from a point 70 metres east of the centreline of Hammerton Street for a distance of 12 metres in an easterly direction.
- g) St James's Street, Burnley, the south side, from a point 53 metres west of the centreline of Manchester Road for a distance of 19 metres in a westerly direction.
- h) St James's Street, Burnley, the south side, from a point 157 metres west of the centreline of Manchester Road for a distance of 15 metres in a westerly direction.
- i) The Mall, Burnley, all sides, from its junction with Curzon Street for its entire length.



**Key to Restriction Types Displayed**

- No Waiting At Any Time
- No Loading/Unloading At Any Time
- Disabled Parking
- Goods Vehicle Loading and Unloading Only



Location Map



Community Services  
 Phil Barrett  
 Director Community Services  
 P.O. Box 100, County Hall,  
 PRESTON PR1 0LD



**Burnley Town Centre**

SCALE	1 : 1000
DATE	18/06/2017
Drawn by	SB/OS/17
Checked by	TJP
Scale with care as distortion may occur	