

**THE BOROUGH COUNCIL OF KING'S LYNN AND WEST NORFOLK (OFF STREET
PARKING PLACES) AMENDMENT ORDER 2020
VARIATION NOTICE 2022**

The Borough Council of King's Lynn and West Norfolk in exercise of their powers under section 35C Road Traffic Regulation Act 1984 (as amended) and all other enabling powers **HEREBY VARIES** the Borough Council of King's Lynn and West Norfolk (Off-Street Parking Places) Amendment Order 2020 to have the following effects:-

- i) To vary the charges for the Car Parks as detailed with current and proposed charges set out in Schedule 1 below.
- ii) To vary the charges for Season Tickets and Permits as detailed with current and proposed charges set out in Schedule 2 below.
- iii) To vary the plans of the following Car Parks;
 - a) Coach Park, Hunstanton
 - b) Seagate East, Hunstanton
 - c) Southend Road, Hunstanton

details of the plans are annexed to this Notice.

This variation will take effect on 1 April 2022.

Schedule 1

New tariff for King's Lynn short-term (Baker Lane, Blackfriars Street, Chapel Street, St James Court, Surrey Street, Vancouver Quarter also known as Old Cattel Market) car parks;

Charging Periods at Parking Place	Present	New
0800hrs to 1700hrs	£1.80 for up to 1 hour	£2.00 for up to 1 hour
	£2.80 for up to 2 hours	£3.10 for up to 2 hours
	£3.50 for up to 3 hours	£3.80 for up to 3 hours
	£4.70 for up to a maximum permitted stay of 5 hours	£5.10 for up to a maximum permitted stay of 5 hours
1700hrs to 0800hrs	£2.00 expires 0900hrs	£2.00 expires 0900hrs

New tariff for King's Lynn short-term car parks with 30 minute tariff (Tuesday Market Place, Saturday Market Place, St James Car Park Pay and Display Area) car parks;

Charging Periods at Parking Place	Present	New
0800hrs to 1700hrs	£1.10 for up to 30 minutes	£1.20 for up to 30 minutes
	£1.80 for up to 1 hour	£2.00 for up to 1 hour
	£2.80 for up to 2 hours	£3.10 for up to 2 hours
	£3.50 for up to 3 hours	£3.80 for up to 3 hours
	£4.70 for up to a maximum permitted stay of 5 hours	£5.10 for up to a maximum permitted stay of 5 hours
1700hrs to 0800hrs	£1.10 for up to 30 minutes	£1.20 for up to 30 minutes
	£1.80 for up to 1 hour	NA

	£2.00 expires 0900hrs	£2.00 expires 0900hrs
--	-----------------------	-----------------------

New tariff for Boal Quay car park

Charging Periods at Parking Place	Present	New
0800hrs to 1700hrs	£2.70 All day - expires 0900hrs	£2.90 All day - expires 0900hrs
1700hrs to 0800hrs	£2.00 expires 0900hrs	£2.00 expires 0900hrs

New tariff for Common Staithe Quay, Juniper, Austin Street East, Austin Street West car parks

Charging Periods at Parking Place	Present	New
0800hrs to 1700hrs	£2.80 All day prior to 1000hrs - expires 0900hrs	£3.00 All day prior to 1000hrs - expires 0900hrs
	£3.60 All day from 1000hrs and thereafter – expires 0900hrs	£3.80 All day from 1000hrs and thereafter – expires 0900hrs
1700hrs to 0800hrs	£2.00 expires 0900hrs	£2.00 expires 0900hrs

New tariff for St James Multi Storey car park

Charging Periods at Parking Place	Present	New
0700hrs to 2330hrs	£1.80 for up to 1 hour	£2.00 for up to 1 hour
	£2.80 for up to 2 hours	£3.10 for up to 2 hours
	£3.50 for up to 3 hours	£3.80 for up to 3 hours
	£4.00 for up to 4 hours	£4.30 for up to 4 hours
	£4.70 for up to 5 hours	£5.10 for up to 5 hours
	£5.90 for up to 6 hours	£6.30 for up to 6 hours
	£7.10 for up to 7 hours	£7.50 for up to 7 hours
	£8.30 for up to 8 hours	£8.80 for up to 8 hours
	£9.50 for up to 9 hours	£10.10 for up to 9 hours
	£10.70 for up to 10 hours	£11.30 for up to 10 hours
	£11.90 for up to 11 hours	£12.60 for up to 11 hours
1700hrs to 0700hrs	£1.80 for up to 1 hour	NA
	£2.00 overnight till 0900hrs	£2.00 overnight till 0900hrs

New Tariff for The Green

Charging Periods at Parking Place	Present	New
At all times Monday to Sunday when operating as a paid parking place	£1.00 per day	No change

New tariff for Heacham (North Beach x2, South Beach) car parks;

Charging Periods at Parking Place	Present	New
--	----------------	------------

1 st March to 30 th June and 1 st September to 31 st October 0800hrs to 1700hrs	£2.00 for up to 1 hour	No change
	£4.00 for up to 2 hours	No change
	£5.00 for up to 3 hours	No change
	£6.00 24 hours	
1 st July to 31 st August 0800hrs to 1700hrs	£2.00 for up to 1 hour	No change
	£4.00 for up to 2 hours	No change
	£5.00 for up to 3 hours	No change
	£7.00 24 hours	No change
1 st March to 31 st October 1700hrs to 0800hrs	£2.00 expires 0900hrs	No change
1 st November to 28 th February	No Charge	No change

New tariff for Hunstanton (South Prom, Seagate East, Seagate West, Southend, Cliff) car parks;

Charging Periods at Parking Place	Present	New
1 st September to 30 th June 0800hrs to 1700hrs		1 st November to 28 th February
	£2.00 for up to 1 hour	£2.20 for up to 1 hour
	£4.00 for up to 2 hours	£4.20 for up to 2 hours
	£5.00 for up to 3 hours	£6.00 for up to 3 hours
	£6.00 24 hours	£8.00 24 hours
1 st July to 31 st August 0800hrs to 1700hrs		1 st March to 31 st October 0800hrs to 1700hrs
	£2.00 for up to 1 hour	£2.20 for up to 1 hour
	£4.00 for up to 2 hours	£4.20 for up to 2 hours
	£5.00 for up to 3 hours	£6.00 for up to 3 hours
	£7.00 24 hours	£9.00 24 hours
All Year 1700hrs to 0800hrs (expires at 0900hrs)	£2.00 expires 0900hrs	£2.00 expires 0900hrs

New tariff for Hunstanton Central car park;

Charging Periods at Parking Place	Present	New
0800hrs to 1700hrs	£1.80 for up to 1 hour	£2.00 for up to 1 hour
	£2.80 for up to 2 hours	£3.10 for up to 2 hours
	£3.50 for up to 3 hours	£3.80 for up to 3 hours
	£4.70 for up to a maximum permitted stay of 5 hours	£5.10 for up to 5 hours maximum permitted stay of 5 hours

1700hrs to 0800hrs	£2.00 expires 0900hrs	£2.00 expires 0900hrs
--------------------	-----------------------	-----------------------

New tariff for Hunstanton Valentine Road car park;

Charging Periods at Parking Place	Present	New
0800hrs to 1700hrs	£1.10 for up to 30 minutes	£1.20 for up to 30 minutes
	£1.80 for up to 1 hour	£2.00 for up to 1 hour
	£2.80 for up to 2 hours	£3.10 for up to 2 hours
	£3.50 for up to 3 hours	£3.80 for up to 3 hours
	£1.00 24 hours – Arrive before 1000hrs	£1.20 24 hours – Arrive before 1000hrs
	£2.80 24 hours – Arrive after 1000hrs	£3.00 24 hours – Arrive after 1000hrs
1700hrs to 0800hrs	£2.00 expires 0900hrs	£2.00 expires 0900hrs

New tariff for North Promenade car park;

Charging Periods at Parking Place	Present	New
1 st March to 30 th June and 1 st September to 31 st October		1 st November to 28 th February
0800hrs to 1700hrs	£4.00 for up to 3 hours	£5.00 for up to 3 hours
0800hrs to 1700hrs	£5.50 for up to 4 hours	£7.00 for up to 4 hours
0800hrs to 1700hrs	£7.20 24 hours	£8.00 24 hours
1 st July to 31 st August 0800hrs to 1700hrs		1 st March to 31 st October
	£4.00 for up to 3 hours	£5.00 up to 3 hours
	£5.50 for up to 4 hours	£7.00 up to 4 hours
	£7.70 24 hours	£9.00 24 hours
All Year 1700hrs to 0800hrs (expires at 0900hrs)		
	£2.00	No Change

New Tariff for Coach Park + now includes Motor Cars in allocated signed bays

Charging Periods at Parking Place	Present	New
1 st September to 30 th June 0800hrs to 1800hrs		1 st November to 28 th February 0800hrs to 1800hrs
	£4.00 for up to 3 hours	£6.00 for up to 3 hours
	£7.20 over 3 hours and until 1800hrs	£8.00 over 3 hours and until 1800hrs
1 st July to 31 st August 0800hrs to 1800hrs		1 st March to 31 st October 0800hrs to 1800hrs
	£4.00 for up to 3 hours	£6.00 for up to 3 hours
	£7.70 over 3 hours and until 1800hrs	£9.00 over 3 hours and until 1800hrs

All Year Monday to Sunday 1800hrs to 0800hrs	CLOSED	CLOSED

New Tariff for Burnham Market car park

Charging Periods at Parking Place	Present	New
0800hrs to 1800hrs	£1.30 for up to 1 hour	£1.50 for up to 1 hour
	£2.00 for up to 2 hours	£2.50 for up to 2 hours
	£3.30 for up to 5 hours	£4.00 for up to 5 hours
	£4.90 24 Hours	£6.00 24 Hours
1800hrs to 0800hrs	No Charge	No Charge

New tariff for Walks car park

Charging Periods at Parking Place	Present	New
At All Times	Up to 3 hours – Free to Park	No Change
0800hrs to 1700hrs	£2.70 All day - expires 0900hrs	£2.90 All day - expires 0900hrs
1700hrs to 0800hrs	£2.00 expires 0900hrs	£2.00 expires 0900hrs

Schedule 2

CHARGES APPLICABLE FOR SEASON TICKETS AND PERMITS

Type of Season Ticket/Permit	Present	New
A. King's Lynn Pay and Display car parks – Schedule 1: Long Term Season Tickets Schedule 1 – parking places numbered 4, 5, 8, 11,16 and 22A		
Full day tickets per month	£40.00	£44.00
Full day tickets per annum	£400.00	£440.00
Multi-storey Season Tickets Schedule 1 – parking place numbered 22	£800.00	£880.00
Contract private bays Schedule 1 – parking place numbered 6	£800.00	£880.00
Short Term Season Ticket Schedule 1 – parking places numbered 1,6,7,12,19,24,25,28 & 31	£800.00	£880.00
Permit Holders Schedule 1 – parking place Lime Grove Car Park	£95.89	No change
Lynnsport Parking Permit Schedule 1 – parking place Lynnsport Central Car Park	No charge	No charge

<p>B. Hunstanton Pay and Display car parks – Schedule 2</p> <p>OAP Resident Season Tickets – Valid for 12 months on car parks numbered 40,44,48A,48B,49,50 and 52 – Identification required for administration (utility bill, OAP status and vehicle registration document)</p> <p>Unreserved Parking Places Schedule 2 – parking places numbered 40,44,48A,48B,49,50,52</p> <p>Full day tickets – six months</p> <p>Full day tickets – twelve months</p> <p>Reserved Parking Place</p> <p>Schedule 2 – parking place numbered 44</p> <p>Full day tickets – twelve months</p> <p>Water sport Season Ticket</p> <p>Schedule 2 – parking place numbered 46</p> <p>Full day tickets – twelve months</p>	<p>£40.80</p> <p>£155.00</p> <p>£220.00</p> <p>£350.00</p> <p>£115.00</p>	<p>Change OAP to Seniors</p> <p>No change</p> <p>No change</p> <p>No change</p> <p>No change</p> <p>No change</p>
<p>Cliff Passes – 12 Months Passes</p> <p>Schedule 2 – parking place numbered 50</p> <p>Maximum 20 permits issued to Le Strange Estates</p> <p>Seafront Kiosk Trader</p> <p>Schedule 2 – parking places numbered 44 and 49</p> <p>Season ticket valid from 1st March to 31st October</p> <p>Season ticket valid from 1st March to 28th February (Maximum of 3 season tickets per kiosk)</p> <p>Triangle Trader</p> <p>Schedule 2 – parking place numbered 48A & 48B</p> <p>Season ticket valid from 1st March to 31st October</p> <p>Season ticket valid from 1st March to 28th February (Maximum of 3 season tickets per kiosk)</p> <p>Oasis Member</p> <p>Schedule 2 – parking place numbered 44 & 49</p> <p>Bowls</p> <p>Leisure Card</p> <p>North Prom Chalet Users</p> <p>Schedule 2 – parking place number 46</p> <p>01st April to 31st October</p>	<p>£23.00</p> <p>£42.90</p> <p>£58.00</p> <p>£42.90</p> <p>£58.00</p> <p>Free</p> <p>£32.50</p> <p>Free</p>	<p>No change</p> <p>£44.60</p> <p>£60.60</p> <p>£44.60</p> <p>£60.60</p> <p>No change</p> <p>Change name to Alive Card</p> <p>No change</p>
<p>C. Heacham Pay and Display car parks – Schedule 3</p> <p>OAP Resident Season Ticket</p> <p>Valid from 1st March – 31st October on car parks numbered 53A, 53 and 54 - Identification confirming residency required for</p>		<p>Change OAP to Seniors</p>

administration (utility bill, OAP status and vehicle registration document)	£39.20	No change
Resident	£52.80	No change
Valid from 1 st March – 31 st October on car parks numbered 53A, 53 and 54 Identification confirming residency required for administration (utility bill and vehicle registration document)		
Non Resident	£104.00	No change
Beach Hut Resident	£44.80	No change
List to be referred to confirming beach hut renter (for administration purposes only)		
Other Season Tickets	£20.40	£24.00 – 01 November to 28 February
Rover Holiday Pass (available to holiday visitors only)		
Hunstanton and Heacham Pay and Display Car Parks and King's Lynn long-stay car parks only (parking places numbered 4,5,8,11,16,22A,40,44,46,48A,48B,49,50,52,53 and 54)		£27.00 – 31 March to 31 October
Valid for one week		
Burnham Market - Schedule 6		
Long Term Season Ticket		
Schedule 6 – parking place numbered 55		
Full day tickets per month	£28.00	£31.00
Full day tickets per annum	£280.00	£308.00

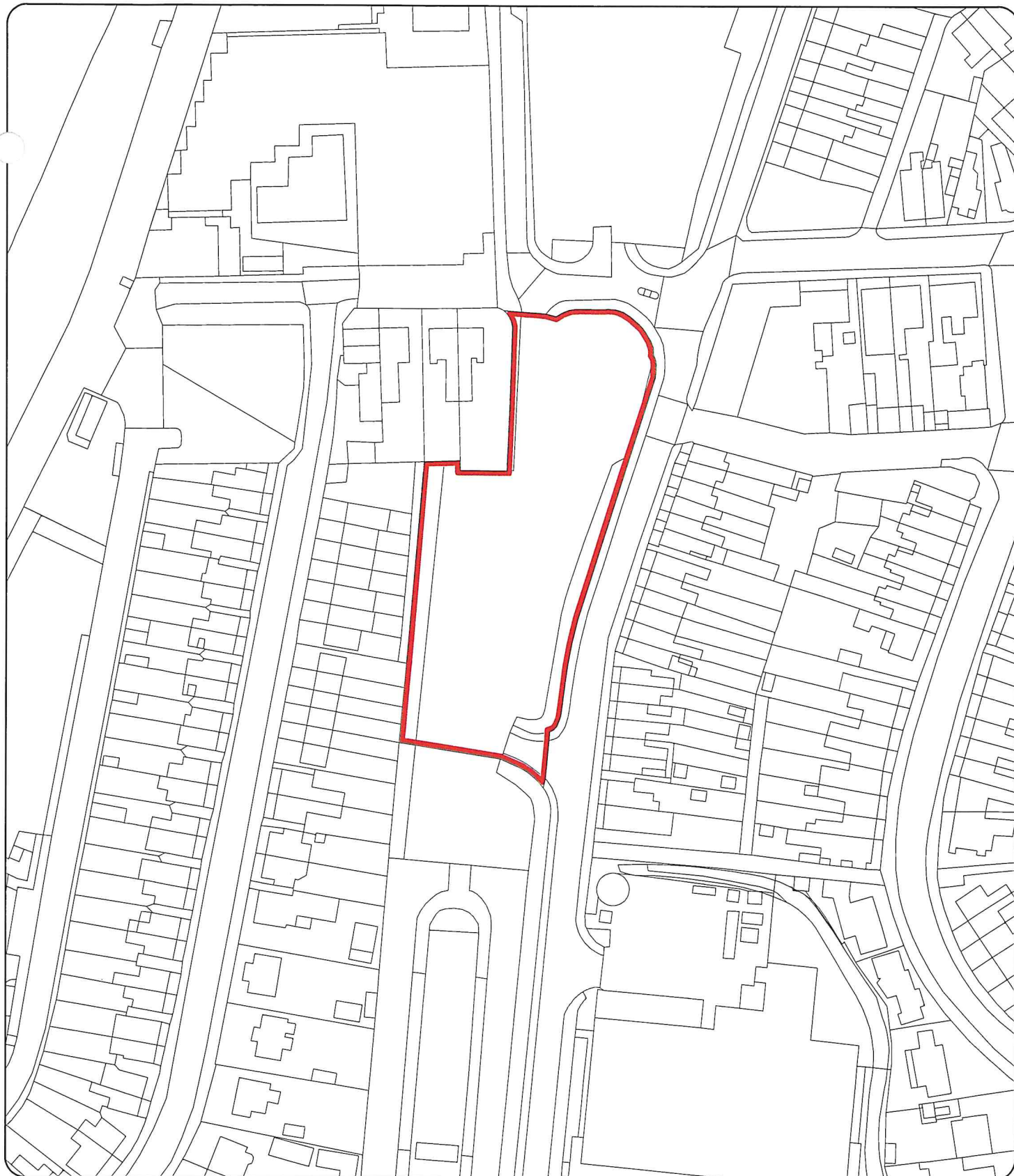
A copy of the draft order and plans, may be inspected at the offices of the Borough Council of King's Lynn and West Norfolk, King's Court, Chapel Street, King's Lynn, during normal office hours.

Insofar as any provision of this Notice conflicts with any provision of any previous Notice or Order relating to off-street parking specified above that provision of this Notice shall prevail.

For enquiries, please contact Parking Operations for which the email is:
parking.operations@west-norfolk.gov.uk

DATED this seventh day of March 2022

If any person wishes to question the validity of the Order or of any of its provisions on the grounds that it or they are not within the powers conferred by The Local Authorities' Traffic Orders Regulations 1996 (hereinafter referred to as "the Act") or that any requirement of the Act or of any instrument made under the Act has not been complied with that person may within six weeks from the date on which the Order was made apply for the purpose to the High Court.



Borough Council of
**King's Lynn &
West Norfolk**



Tel: (01553) 616200 Fax: (01553) 616682
Email: EDandP@west-norfolk.gov.uk

Title
Coach Park
Hunstanton



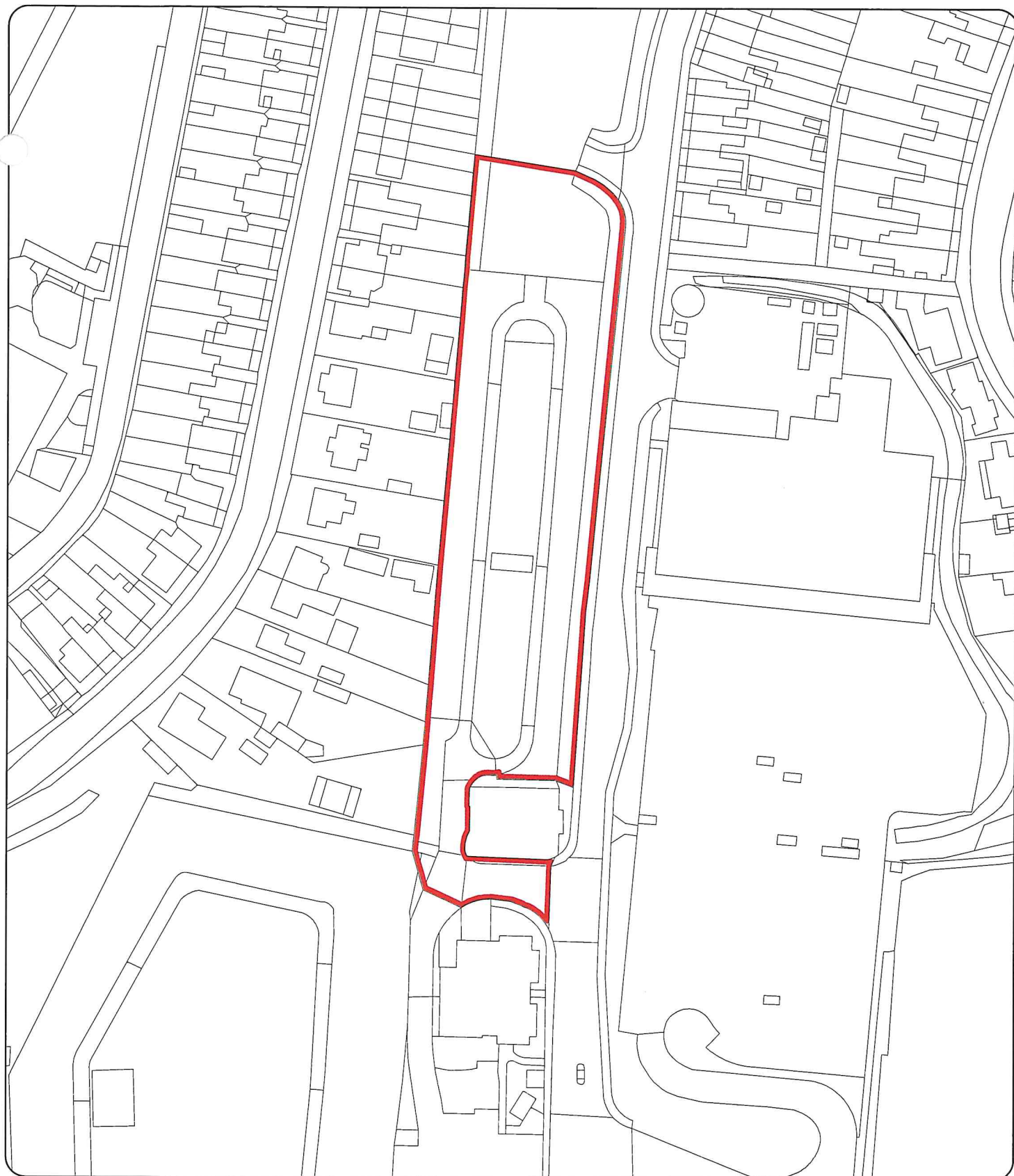
Scale
1/1250 @ A4

Date
21/02/2022

Project / Details
Parking Order

Drawn by
JG

Drawing / Reference Number
Rev 2



**Borough Council of
King's Lynn &
West Norfolk**



Tel: (01553) 616200 Fax: (01553) 616682
Email: EDandP@west-norfolk.gov.uk

Title
Seagate East Car Park
Hunstanton

Project / Details
Parking Order

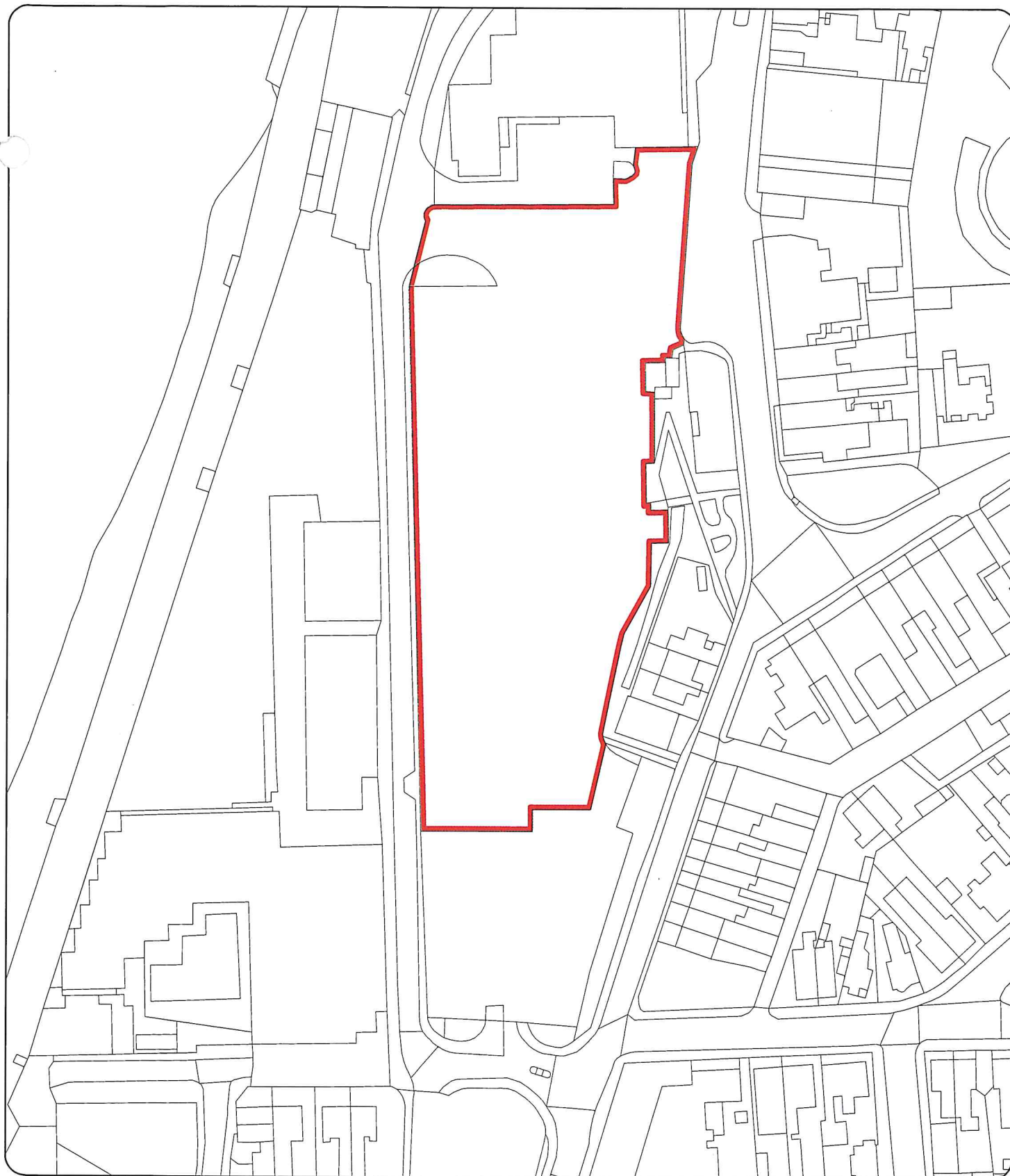


Scale
1/1250 @ A4

Date
21/02/2022

Drawn by
JG

Drawing / Reference Number
Rev 2



**Borough Council of
King's Lynn &
West Norfolk**



Tel: (01553) 616200 Fax: (01553) 616682
Email: EDandP@west-norfolk.gov.uk

Title
Southend Carpark



Scale
1/1250 @ A4

Date
21/02/2022

Project / Details
Parking Order

Drawn by
JG

Drawing / Reference Number
Rev 2