

HARLOW DISTRICT COUNCIL

THE HARLOW TOWN CENTRE (WEST GATE - WEST SQUARE)
(PARKING PLACES - DISABLED PERSONS) ORDER 1987

The District Council of Harlow ('the Council') in exercise of their powers under Section 35(1) of the Road Traffic Regulation Act 1984 ('the Act') and Part IV of Schedule 9 to the Act, and of all other enabling powers, with the consent of the County Council of Essex in accordance with Section 39(3) of the Act and after consulting the Chief Officer of Police in accordance with Part III of Schedule 9 to the Act, hereby make the following Order:-

PART I

General

1. This order shall come into operation on the 23rd February 1987, and may be cited as the Harlow Town Centre (West Gate - West Square) (Parking Places - Disabled Persons) Order 1987.
2. (1) In this Order, except where the context otherwise requires, the following expressions have the meanings hereby respectively assigned to them:-
 - 'driver', in relation to a vehicle waiting in a parking place, means the person driving the vehicle at the time it was left in the parking place;
 - 'parking place' means an area of land specified by name in Column 1 of the Schedule to this Order provided by the Council under Section 32(1) of the Act for use as a parking place.
- (2) The Interpretation Act 1978 shall apply for the interpretation of this Order as it applies for the interpretation of an Act of Parliament.

PART II

Use of Parking Places

3. The area of land specified by name in Column 1 of the Schedule to this Order and as shown coloured red on the attached plan, may be used, subject to the following provisions of this Order, as a parking place for such hours as are specified in relation to that area in the said Schedule.

4. In the Schedule to this Order a parking place is described as available for vehicles of a specified class or in a specified position, the driver of the vehicle shall not permit it to wait in that parking place:-
 - (a) unless it is of the specified class; or
 - (b) in a position other than that specified.
5. (1) The driver of a vehicle shall not permit it to wait in parking place for longer than the maximum permitted for waiting specified in the Schedule to this Order in relation to that parking place.
 - (2) When a vehicle has left a parking place after waiting therein the driver thereof shall not within 2 hours after its leaving permit it to wait again in the parking place.
6. The driver of a vehicle which is not an invalid carriage, shall attach in the relevant position a chronically sick and disabled persons badge issued by any local authority in accordance with the provisions of the Disabled Persons (Badges for Motor Vehicles) Regulations 1982.
7. The Harlow Town Centre (West Gate) (Parking Places - Disabled Persons) Order 1983 is hereby revoked.

CITE ABOVE

72

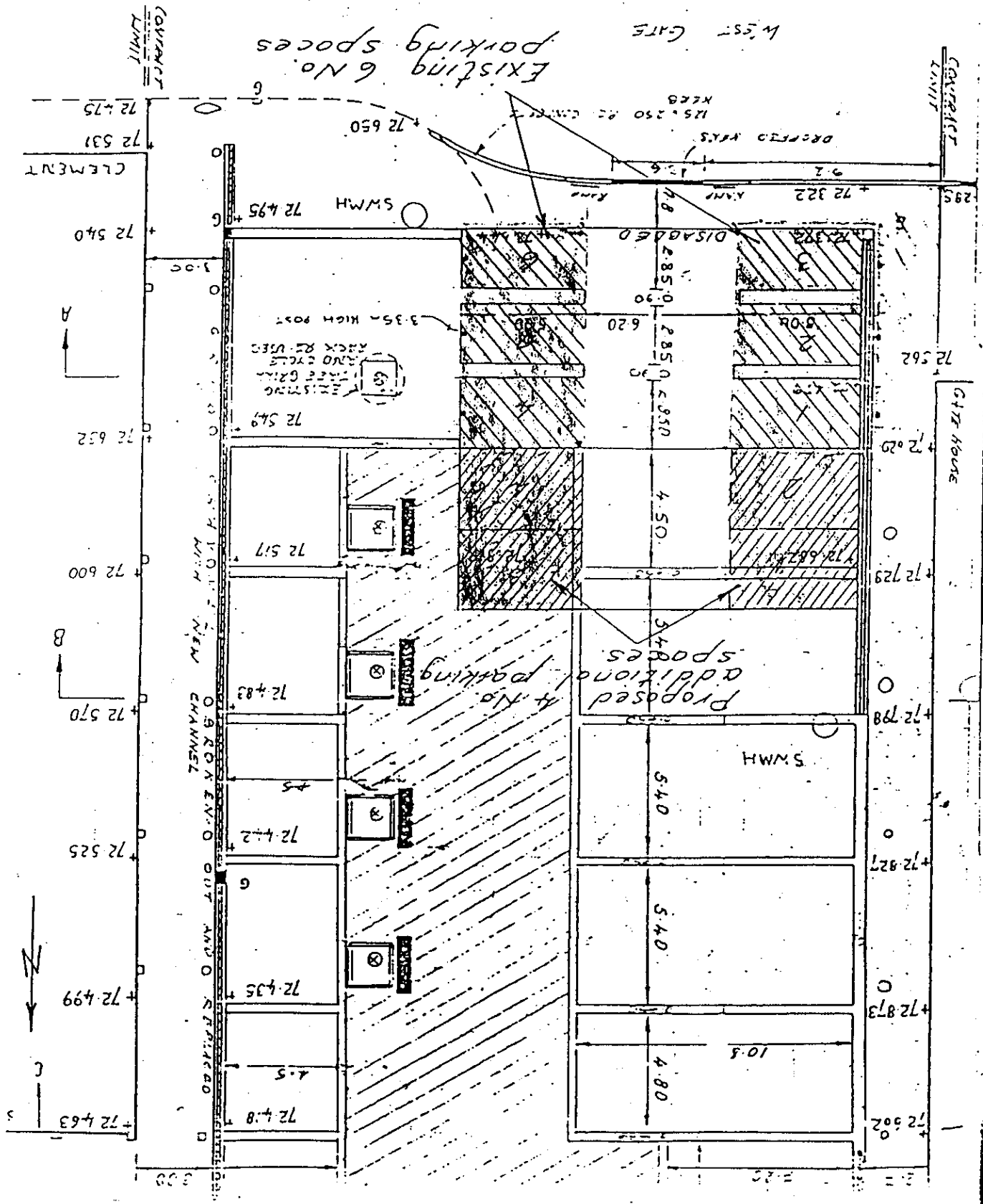
295

SECRET

Handwritten notes at top left: "L. J. [unclear] 1/15/55"

West Square - Parking for Disabled

Scale 1:200




SCHEDULE

NAME OF PARKING PLACE	POSITION IN WHICH VEHICLE MAY WAIT	CLASSES OF VEHICLE	DAYS OF OPERATION OF PARKING PLACES	HOURS OF OPERATION OF PARKING PLACES	MAXIMUM PERIOD FOR WHICH VEHICLES MAY WAIT
1 WEST GATE (WEST SQUARE) PARKING PLACES FOR DISABLED PERSONS	2 WHOLLY WITHIN THE PARKING BAY DESIGNATED - 10 NO. SPACES	3 1. AN INVALID CARRIAGE 2. A VEHICLE ISSUED BY THE DEPARTMENT OF HEALTH AND SOCIAL SECURITY IN LIEU OF AN INVALID CARRIAGE 3. A DISABLED PERSON'S VEHICLE	4 ALL DAYS	5 ALL HOURS	6 2 HOURS

The COMMON SEAL of)
HARLOW DISTRICT COUNCIL)
was hereunto affixed)
this 11th day of February)
1987 in the presence of:-)


Chairman

9719


Duly Authorised Officer

GW3AIL

HARLOW DISTRICT COUNCIL

ROAD TRAFFIC REGULATION ORDER

The Harlow Town Centre - (West Gate [West Square])
(Parking Places - Disabled Persons) Order 1986

The Council proposed to make a new Parking Places Order for a limited waiting period, on the paved area adjacent to the highway between Gate House and the Gas Board showrooms, for use by persons registered as 'disabled persons'.

The new Order will provide for ten spaces, an additional four spaces to those at present in the Order.

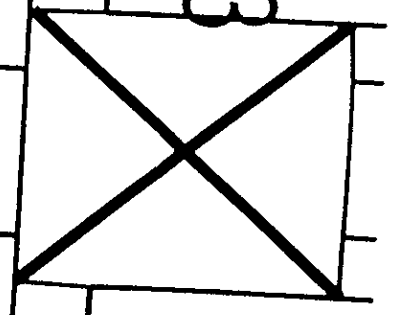
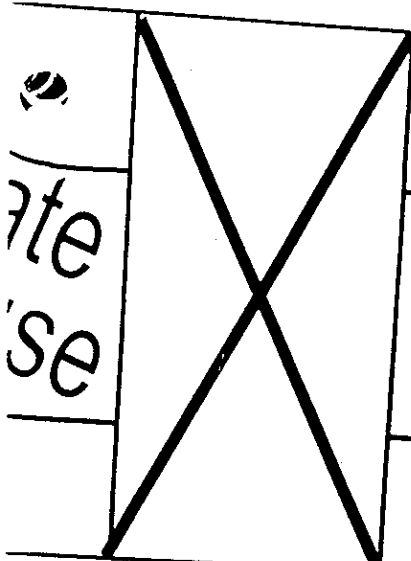
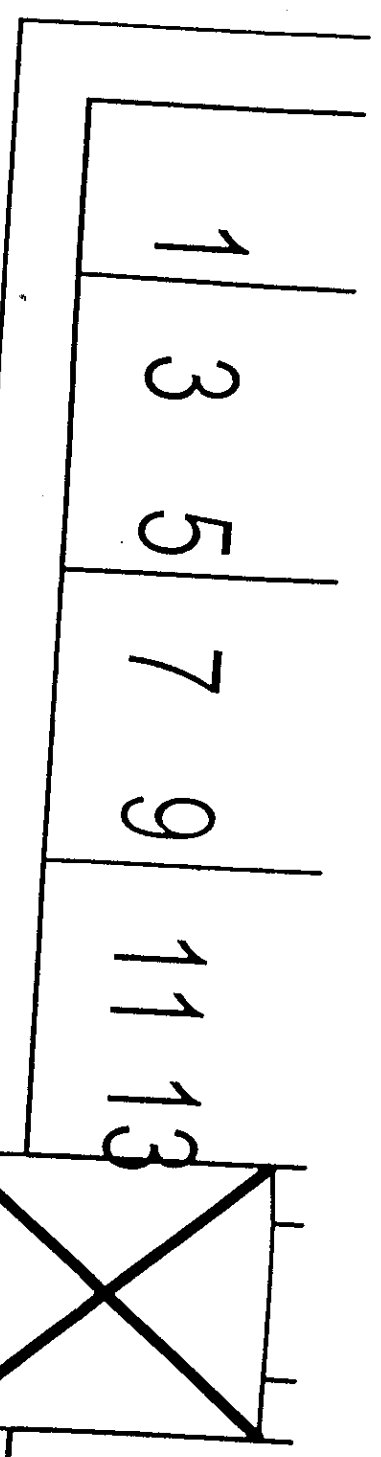
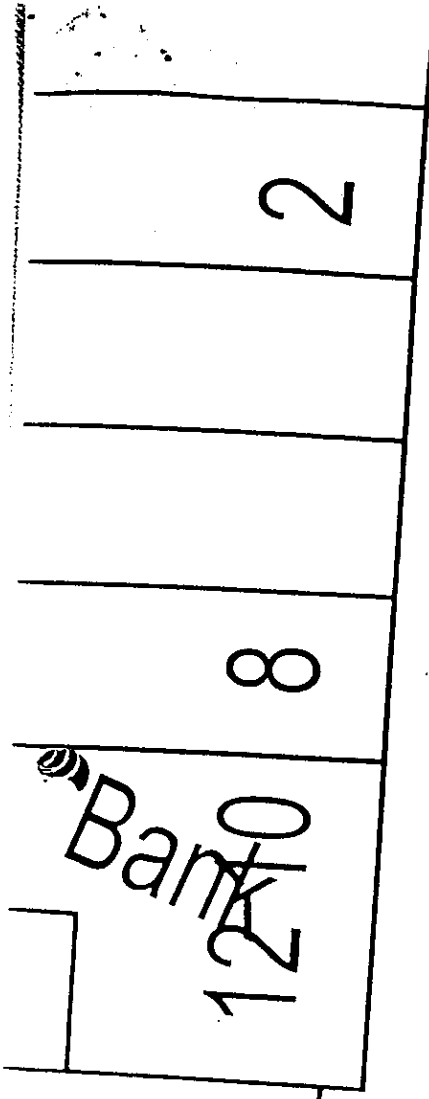
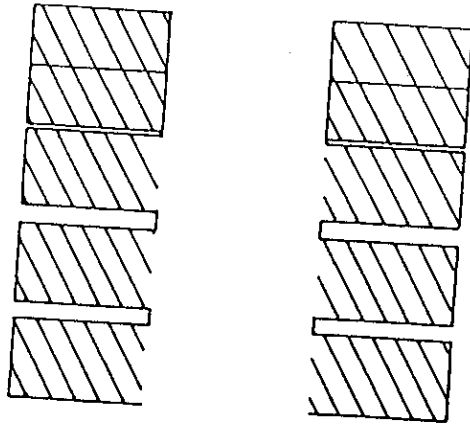
Statement of Reasons

There is a demand for parking places for the disabled, particularly since a facility was lost when development took place on the south side of Cross Street.

Although this scheme does not make up the loss in Cross Street, it does provide an additional four spaces in a strategic part of the Town Centre.

West Gate

10 No. Disabled Bays



THE HIGH

Not to Scale

HARLOW DISTRICT COUNCIL
HARLOW TOWN CENTRE (WEST GATE - WEST SQUARE)
PARKING PLACES - DISABLED PERSONS) ORDER 1987