

THE BOROUGH OF EASTLEIGH (EASTLEIGH TOWN CENTRE)
(AMENDMENT NO.10) ORDER 2012

The Council of the Borough of Eastleigh (hereinafter referred to as "the Council") pursuant to arrangements made under Section 19 of the Local Government Act 2000 with the Hampshire County Council in exercise of the powers of the said County Council under Sections 1, 2 and 4 of the Road Traffic Regulation Act 1984 ("the Act") and Part IV of Schedule 9 to the Act, and of all other enabling powers, and after consultation with the Chief Officer of Police in accordance with Part III of Schedule 9 to the Act hereby makes the following Order:-

Commencement and Citation

1. This Order shall come into operation on 15 March 2012 and may be cited as the "Borough of Eastleigh (Eastleigh Town Centre) (Amendment No.10) Order 2012".

Prohibition and Restriction of Waiting

2. In this Order the Principal Order means The Borough Of Eastleigh (Eastleigh Town Centre) Consolidation Order 2008
3. The Principal Order is hereby amended as follows:

(a) In the First Schedule (No Waiting at Any Time) item number 42C (relating to Kipling Road) shall be revoked and replaced with:

42C. Kipling Road Both From its junction with Woodside Avenue south eastwards for a distance of 26 metres.

(b) In the Thirteenth Schedule (Areas on the Highway Designated as Disabled Persons Parking Places) before item number 1 relating to Blenheim Road there shall be inserted:

A.	Beaulieu Road	West	From a point 41.3 metres north of its junction with Beaulieu Road spine northwards for a distance of 6.3 metres.	Within the bay marked by white lines.	Disabled Persons Vehicles	All Days	All Hours
B.	Beaulieu Road	North west	From a point 2.8 metres north of the north eastern boundary of No.25 Beaulieu Road south westwards for a distance of 6.6 metres.	Within the bay of marked by white lines.	Disabled Persons Vehicles	All Days	All Hours
C.	Beaulieu Road	East	From a point 3 metres north of the northern boundary of No.55 Beaulieu Road southwards for a distance of 6.6 metres.	Within the bay marked by white lines.	Disabled Persons Vehicles	All Days	All Hours

D.	Beaulieu Road	North east	From a point 10.2 metres southeast of its junction with Selborne Drive south eastwards for a distance of 6.8 metres.	Within the bay marked by white lines.	Disabled Persons Vehicles	All Days	All Hours
----	---------------	------------	--	---------------------------------------	---------------------------	----------	-----------

E.	Beaulieu Road	North west	From the eastern boundary of No.100 Belmont Road westwards for a distance of 6.2 metres.	Within the bay marked by white lines.	Disabled Persons Vehicles	All Days	All Hours
----	---------------	------------	--	---------------------------------------	---------------------------	----------	-----------

(c) In the Thirteenth Schedule (Areas on the Highway Designated as Disabled Persons Parking Places) after item number 1 relating to Blenheim Road there shall be inserted:

1A.	Blenheim Road	South	From a point 1.4 metres east of the western boundary of No.11 Blenheim Road westwards for a distance of 5.9 metres.	Within the bay marked by white lines.	Disabled Persons Vehicles	All Days	All Hours
-----	---------------	-------	---	---------------------------------------	---------------------------	----------	-----------

(d) In the Thirteenth Schedule (Areas on the Highway Designated as Disabled Persons Parking Places) after item number 2 relating to Blenheim Road there shall be inserted:

2A.	Browsholme Close	East	From a point 8 metres north of its junction with the main spine of Browsholme Close northwards for a distance of 5.5 metres.	Within the bay marked by white lines.	Disabled Persons Vehicles	All Days	All Hours
-----	------------------	------	--	---------------------------------------	---------------------------	----------	-----------

(e) In the Thirteenth Schedule (Areas on the Highway Designated as Disabled Persons Parking Places) after item number 4 relating to Cherbourg Road there shall be inserted:

4A.	Consort Road	East	From the northern boundary of No.12 Consort Road southwards for a distance of 6.4 metres.	Within the bay marked by white lines.	Disabled Persons Vehicles	All Days	All Hours
-----	--------------	------	---	---------------------------------------	---------------------------	----------	-----------

(f) In the Thirteenth Schedule (Areas on the Highway Designated as Disabled Persons Parking Places) item number 5 relating to Cornwall Road shall be revoked and replaced with:

5.	Cornwall Road	North	From the eastern boundary of No.15 Cornwall Road westwards for a distance of 6.1 metres.	Within the bay marked by white lines.	Disabled Persons Vehicles	All Days	All Hours
----	---------------	-------	--	---------------------------------------	---------------------------	----------	-----------

5A.	Cornwall Road	North	From the eastern boundary of No.17 Cornwall Road westwards for a distance of 5.6 metres.	Within the bay marked by white lines.	Disabled Persons Vehicles	All Days	All Hours
5B.	Cornwall Road	North	From the eastern boundary of No.25 Cornwall Road westwards for a distance of 5.5 metres.	Within the bay marked by white lines.	Disabled Persons Vehicles	All Days	All Hours
6.	Cornwall Road	North	From the eastern boundary of No.29 Cornwall Road westwards for a distance of 5.6 metres.	Within the bay marked by white lines.	Disabled Persons Vehicles	All Days	All Hours
6A.	Cornwall Road	North east	From a point 35 metres east of its junction with Devon Drive south eastwards for a distance of 5.8 metres.	Within the bay marked by white lines.	Disabled Persons Vehicles	All Days	All Hours
6B.	Cornwall Road	North east	From a point 28 metres east of its junction with Devon Drive south westwards for a distance of 6.2 metres.	Within the bay marked by white lines.	Disabled Persons Vehicles	All Days	All Hours

(g) In the Thirteenth Schedule (Areas on the Highway Designated as Disabled Persons Parking Places) after item number 8 relating to Cox Row there shall be inserted:

8A.	Cox Row	South	From a point 33 metres west of the junction with Wiltshire Road westwards for a distance of 6.6 metres.	Within the bay marked by white lines.	Disabled Persons Vehicles	All Days	All Hours
8B.	Cox Row	North	From a point 54 metres east of its junction with Falkland Road eastwards for a distance of 6.4 metres.	Within the bay marked by white lines.	Disabled Persons Vehicles	All Days	All Hours
8C.	Cox Row	North	From a point 60 metres east of its junction with Falkland Road eastwards for a distance of 6.3 metres.	Within the bay marked by white lines.	Disabled Persons Vehicles	All Days	All Hours
8D.	Cox Row	North	From a point 68 metres east of its junction with Falkland Road eastwards for a distance of 6.8 metres.	Within the bay marked by white lines.	Disabled Persons Vehicles	All Days	All Hours

9.	Curlew Square	East	From a point 1 metre north of the southern boundary of No.1 Curlew Square northwards for a distance of 5.5 metres.	Within the bay marked by white lines.	Disabled Persons Vehicles	All Days	All Hours
9A.	Curlew Square	North	From a point 2.9 metres east of the western boundary of No.5 Curlew Square eastwards for a distance of 6.5 metres.	Within the bay marked by white lines.	Disabled Persons Vehicles	All Days	All Hours
10.	Devon Drive	South	From a point 1.1 metres west of the western property wall of No.8 Devon Drive eastwards for a distance of 6.6 metres.	Within the bay marked by white lines.	Disabled Persons Vehicles	All Days	All Hours
10A.	Devon Drive	South	From the western boundary of No.28 Devon Drive eastwards for a distance of 6.2 metres.	Within the bay marked by white lines.	Disabled Persons Vehicles	All Days	All Hours
10B.	Devon Drive	North	From the western boundary of No.76 Devon Drive eastwards for a distance of 6.6 metres.	Within the bay marked by white lines.	Disabled Persons Vehicles	All Days	All Hours
11.	Falcon Square	South	From a point 1.8 metres east of the eastern boundary of No.4 Falcon Square westwards for a distance of 6.4 metres.	Within the bay marked by white lines.	Disabled Persons Vehicles	All Days	All Hours
11A.	Falcon Square	South	From a point 1 metre west of the western boundary of No.35 Falcon Square eastwards for a distance of 6.4 metres.	Within the bay marked by white lines.	Disabled Persons Vehicles	All Days	All Hours

(h) In the Thirteenth Schedule (Areas on the Highway Designated as Disabled Persons Parking Places) after item number 12 relating to Falcon Square there shall be inserted:

12A	Greenfinch Close	South east	From the northern boundary of No.9 Greenfinch Close southwards for a distance of 6.3 metres.	Within the bay marked by white lines.	Disabled Persons Vehicles	All Days	All Hours
-----	------------------	------------	--	---------------------------------------	---------------------------	----------	-----------

(i) In the Thirteenth Schedule (Areas on the Highway Designated as Disabled Persons Parking Places) after item number 17 relating to High Street there shall be inserted:

17A	Kent Road	East	From a point 0.8 metres north of the southern boundary of No.11 Kent Road northwards for a distance of 6.5 metres.	Within the bay marked by white lines.	Disabled Persons Vehicles	All Days	All Hours
-----	-----------	------	--	---------------------------------------	---------------------------	----------	-----------

17B	LauncestonNorth Drive		From a point opposite a point 14 metres east of its junction with Dyram Close eastwards for a distance of 7.5 metres.	Within the bay marked by white lines.	Disabled Persons Vehicles	All Days	All Hours
17C	LauncestonSouth Drive	east	From a point opposite a point 9.2 metres northeast of the south western boundary of No.10 Lewes Close north eastwards for a distance of 5.5 metres.	Within the bay marked by white lines.	Disabled Persons Vehicles	All Days	All Hours
17D	LauncestonWest Drive		From the southern boundary of No.34 Magpie Lane northwards for a distance of 6.4 metres.	Within the bay marked by white lines.	Disabled Persons Vehicles	All Days	All Hours

(j) In the Thirteenth Schedule (Areas on the Highway Designated as Disabled Persons Parking Places) after item number 19 relating to Market Street there shall be inserted:

19A.	Mottisfont Road	East	From a point 1 metre north of the southern boundary of No.31 Mottisfont Road northwards for a distance of 6.6 metres.	Within the bay marked by white lines.	Disabled Persons Vehicles	All Days	All Hours
19B.	Nightingale Avenue (rear access road)	North west	From the south western corner of the southern turning head of the rear access road (behind No.s 64-100 Nightingale Avenue) north eastwards for a distance of 5.5 metres.	Within the bay marked by white lines.	Disabled Persons Vehicles	All Days	All Hours

(k) In the Thirteenth Schedule (Areas on the Highway Designated as Disabled Persons Parking Places) items numbered 20, 21 and 22 relating to Selborne Drive and Somerset Crescent shall be revoked and replaced with:

20.	Oxburgh Close	South	From the south western corner of the western most turning head in Oxburgh Close eastwards for a distance of 5.1 metres.	Within the bay marked by white lines.	Disabled Persons Vehicles	All Days	All Hours
21.	Selbourne Drive	East	From the south western boundary of No.13 Selborne Drive north eastwards for a distance of 6.4 metres.	Within the bay marked by white lines.	Disabled Persons Vehicles	All Days	All Hours

22.	Somerset Crescent	North west	From the eastern boundary of No.26 Somerset Crescent westwards for a distance of 6.5 metres.	Within the bay marked by white lines.	Disabled Persons Vehicles	All Days	All Hours
22A.	Somerset Crescent	North west	From the western boundary of No.32 Somerset Crescent eastwards for a distance of 6.6 metres.	Within the bay marked by white lines.	Disabled Persons Vehicles	All Days	All Hours
22B.	Somerset Crescent	North	From a point opposite a point 3.2 metres east of the eastern boundary of No.33 Somerset Crescent westwards for a distance of 7 metres.	Within the bay marked by white lines.	Disabled Persons Vehicles	All Days	All Hours
22C.	Somerset Crescent	North east	From a point 3.1 metres west of the western property wall of No.40 Somerset Crescent westwards for a distance of 6.6 metres.	Within the bay marked by white lines.	Disabled Persons Vehicles	All Days	All Hours
22D.	Sparrow Square	North east	From the north western boundary of No.20 Sparrow Square south eastwards for a distance of 6.6 metres.	Within the bay marked by white lines.	Disabled Persons Vehicles	All Days	All Hours
23.	Surrey Road	North	From the western boundary of No.16 Surrey Road westwards for a distance of 7.3 metres.	Within the bay marked by white lines.	Disabled Persons Vehicles	All Days	All Hours
23A.	Swift Close	North	From a point 1.5 metres east of the western boundary of No.14 Swift Close eastwards for a distance of 6.3 metres.	Within the bay marked by white lines.	Disabled Persons Vehicles	All Days	All Hours
23B.	Swift Close	North	From a point 0.5 metres west of the eastern boundary of No.15 Swift Close westwards for a distance of 5.3 metres.	Within the bay marked by white lines.	Disabled Persons Vehicles	All Days	All Hours
24.	The Quadrangle	North	From a point 0.9 metres west of the eastern boundary of No.109 The Quadrangle westwards for a distance of 5.9 metres.	Within the bay marked by white lines.	Disabled Persons Vehicles	All Days	All Hours

(l) In the Thirteenth Schedule (Areas on the Highway Designated as Disabled Persons Parking Places) item number 26 relating to Victoria Road shall be revoked and replaced with:

26. Victoria Road	North	From a point 2.1 metres west of the western boundary of No.15 Victoria Road eastwards for a distance of 6.1 metres.	Within the bay marked by white lines.	Disabled Persons Vehicles	All Days	All Hours
-------------------	-------	---	---------------------------------------	---------------------------	----------	-----------

Dated this day of 2012

THE COMMON SEAL of EASTLEIGH)
BOROUGH COUNCIL was hereunto)
affixed in the presence of:-)

Head of Legal & Democratic Services

DATED

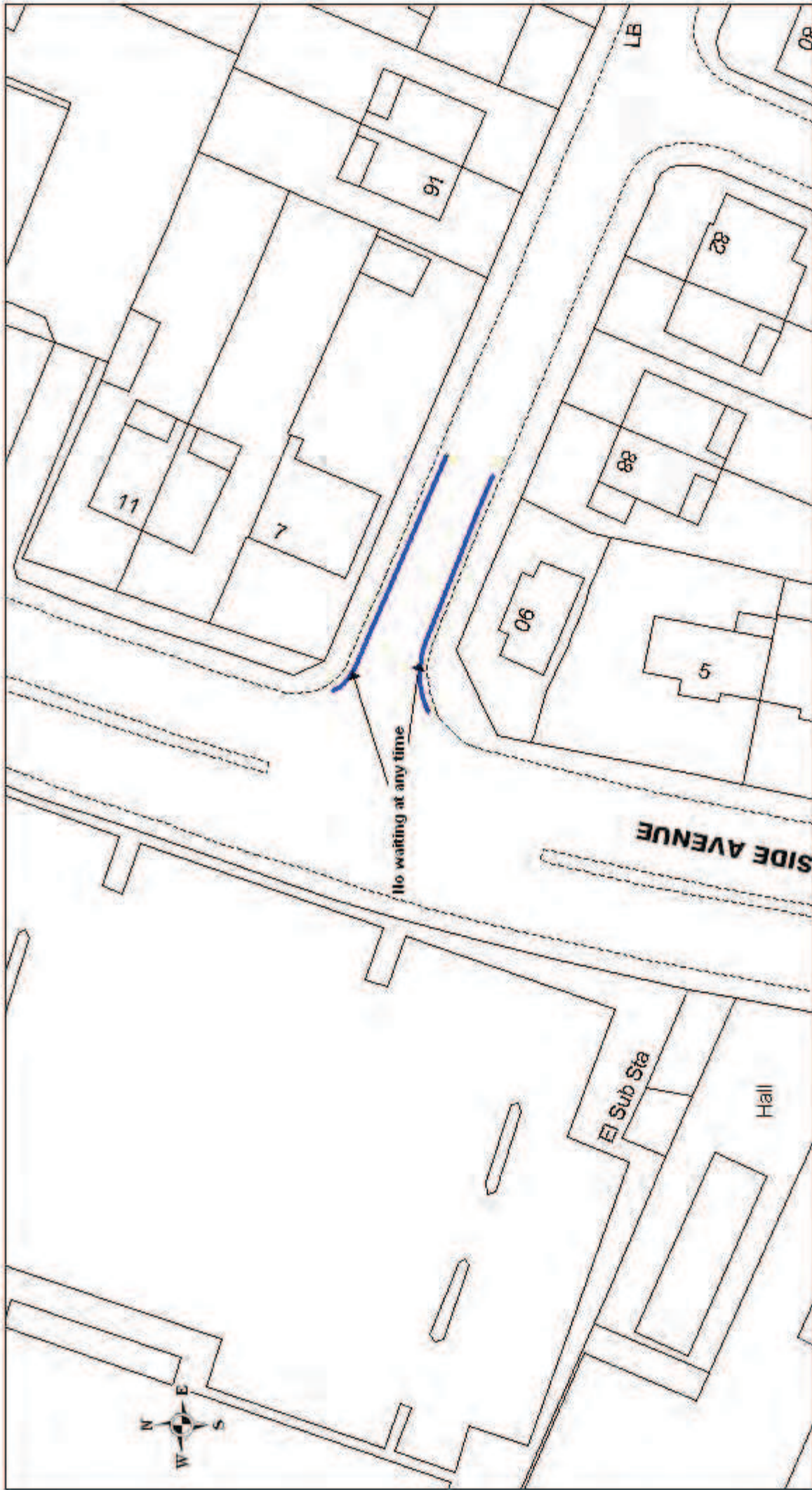
2012

BOROUGH OF EASTLEIGH

THE BOROUGH OF EASTLEIGH
(EASTLEIGH TOWN CENTRE)
(AMENDMENT NO.10) ORDER 2012

A R Ward
Head of Legal & Democratic Services
Eastleigh Borough Council
Civic Offices
Leigh Road
Eastleigh
Hampshire
SO50 9YN

U:\Legal & Democratic Services\Democratic
Services\COMADMIN\TRAFORDS\DECIMNONCPZ\EASTLEIGH_NON
CPZ\EASTLEIGH_TOWN_CENTRE\AMENDNO.X_DPPB_REVIEW
2012\EAST_NONCPZ_DPPB_REVIEW_2012_ORDER.doc



No waiting at any time

SIDE AVENUE

Sub Sta

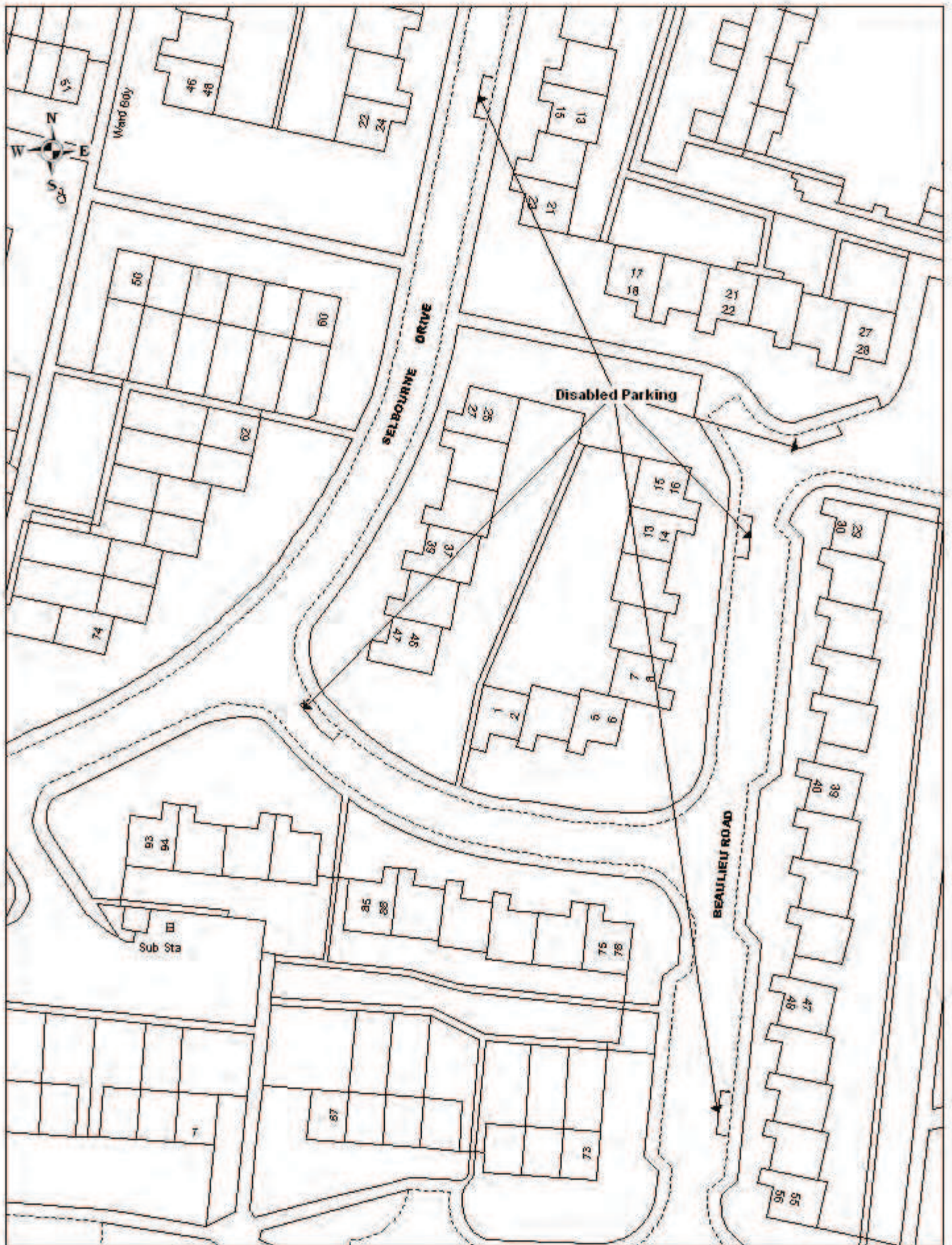
Hall



Kipling Road: no waiting at any time

© Crown copyright. All rights reserved.
 Eastleigh Borough Council
 Licence No. 100018322/2006

SCALE	1 : 500
DATE	28/02/2012
DRAWING No.	E/TM/01/07/C/001
DRAWN BY	FJH
CHECKED BY	JF



Beaulieu Road and Selbourne Drive: disabled parking bays

© Crown copyright. All rights reserved
 Eastleigh Borough Council
 Licence No. 100019522/2005

SCALE	1 : 750
DATE	28/02/2012
DRAWING NO.	E/TM/01/07/C/002
DRAWN BY	PJH
CHECKED BY	JF

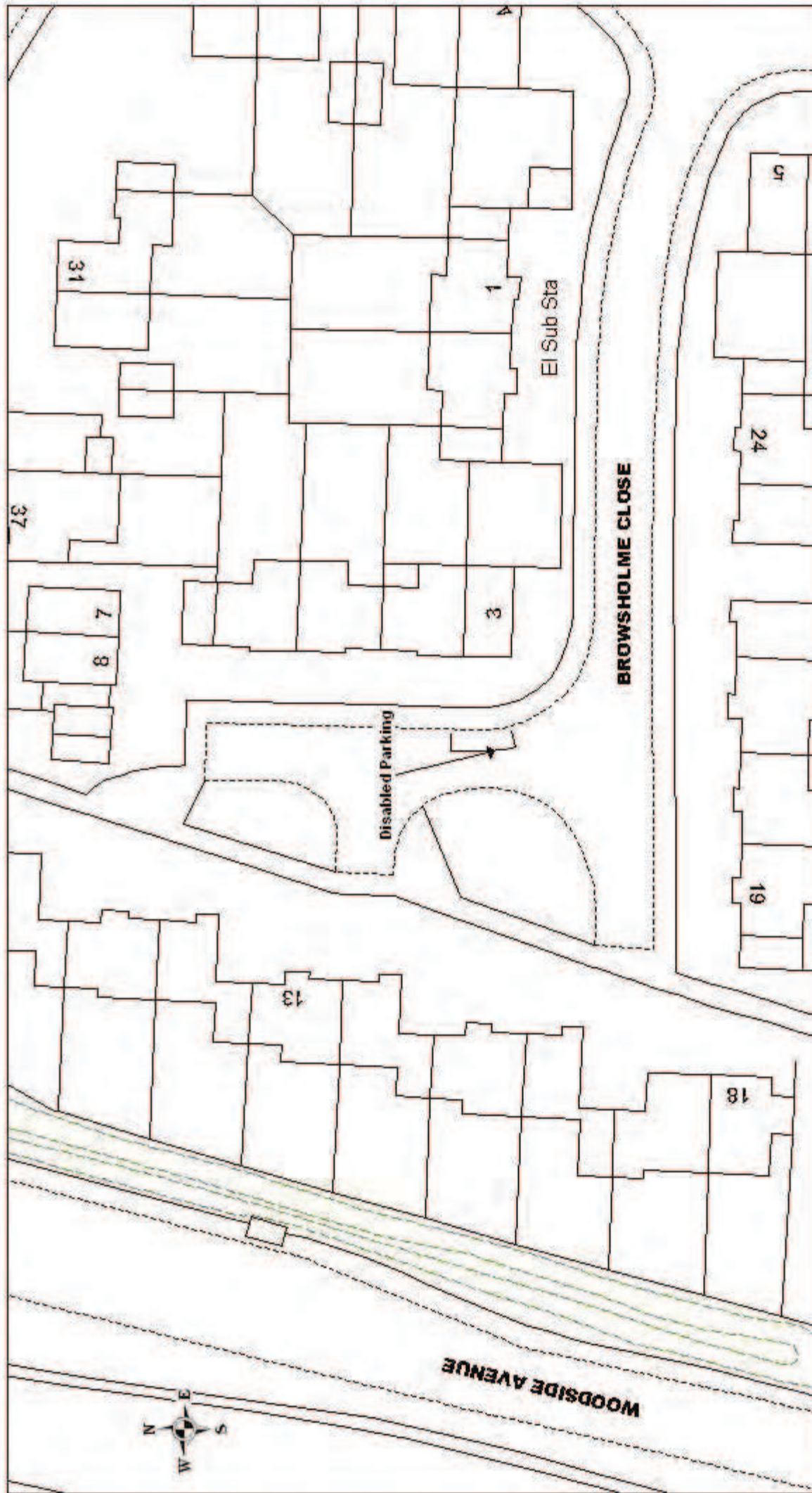


SCALE	1 : 250
DATE	28/02/2012
DRAWING No.	E/TM/01/07/C/004
DRAWN BY	FJH
CHECKED BY	JF

Blenheim Road : disabled parking bay

© Crown copyright. All rights reserved.
 Eastleigh Borough Council
 Licence No. 100018622 (2005)

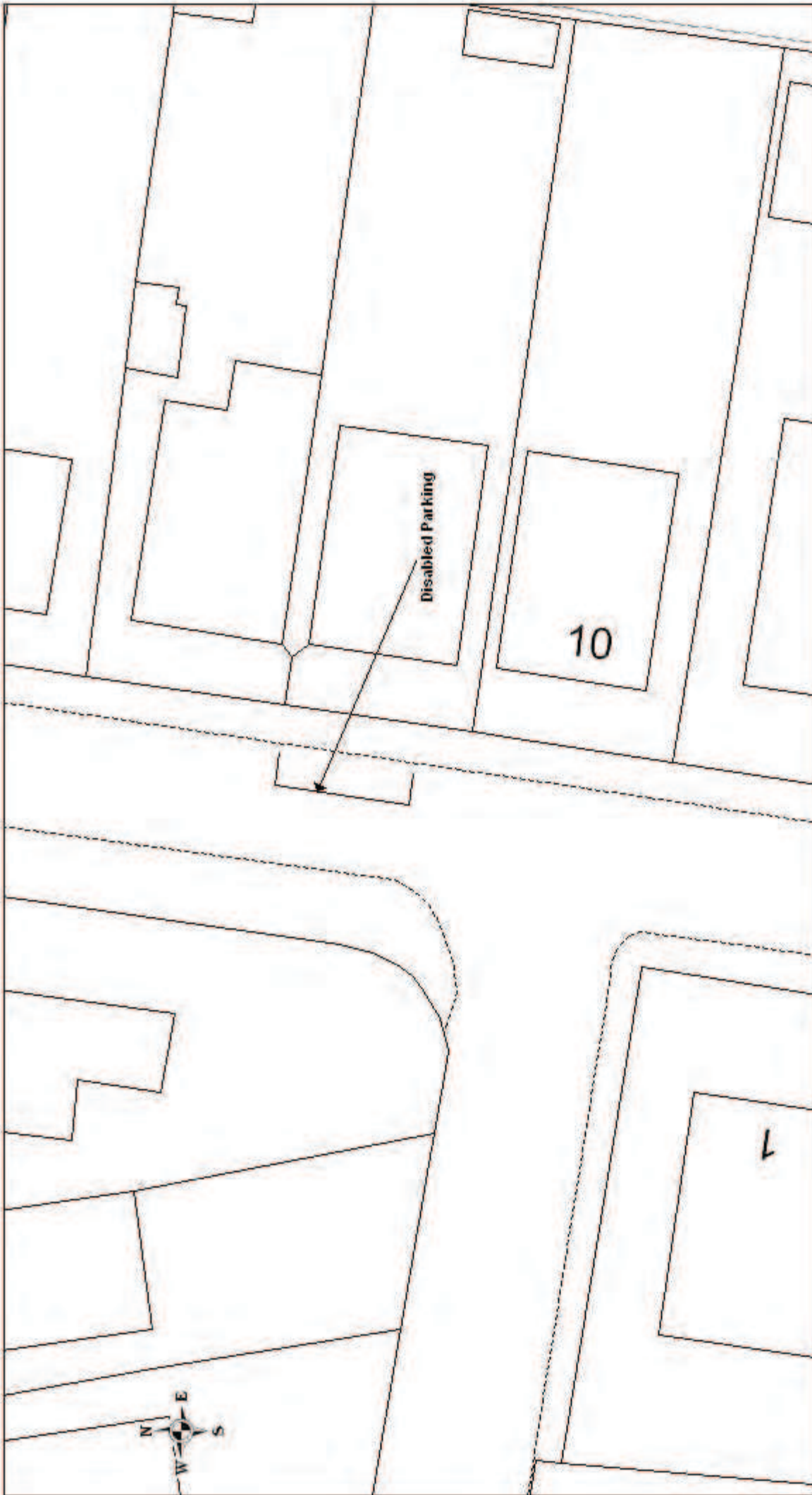




Browsholme Close : disabled parking bay

© Crown copyright. All rights reserved.
 Eastleigh Borough Council
 License No. 100018322 (2005)

SCALE	1 : 500
DATE	28/02/2012
DRAWING No.	E/TM/01/07/C/005
DRAWN BY	PJH
CHECKED BY	JF



SCALE	1 : 250
DATE	28/02/2012
DRAWING No.	E/TM/01/07/C/006
DRAWN BY	RJH
CHECKED BY	JF

Consort Road: disabled parking bay

© Crown copyright. All rights reserved.
Eastleigh Borough Council
Document No. 1000 (02/12/05)





Key to Restriction Types Display

— Areas On Highway Designated As Disabled Persons Parking Places



Cornwall Road: disabled parking bays

© Crown copyright. All rights reserved.
 Eastleigh Borough Council
 Licence No. 100018322 (2005)

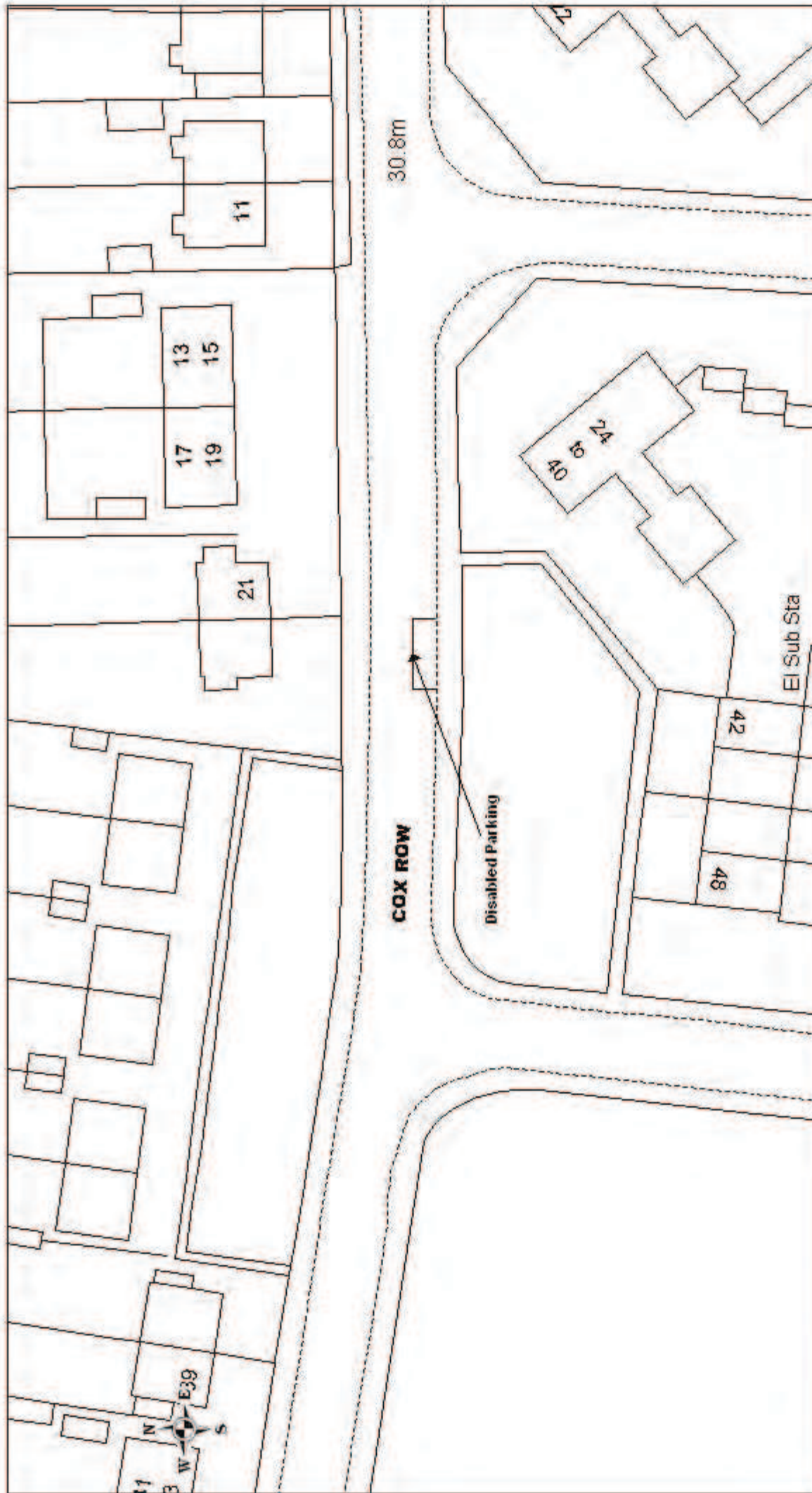
SCALE	1 : 500
DATE	28/02/2012
DRAWING No.	E/T/M/01/07/C/007
DRAWN BY	FJH
CHECKED BY	JF



Cox Row: disabled parking bays

© Crown copyright. All rights reserved.
Eastleigh Borough Council
Drawing No. E/T/M/01/07/C/008

SCALE	1 : 500
DATE	28/02/2012
DRAWING No.	E/T/M/01/07/C/008
DRAWN BY	FJH
CHECKED BY	JF

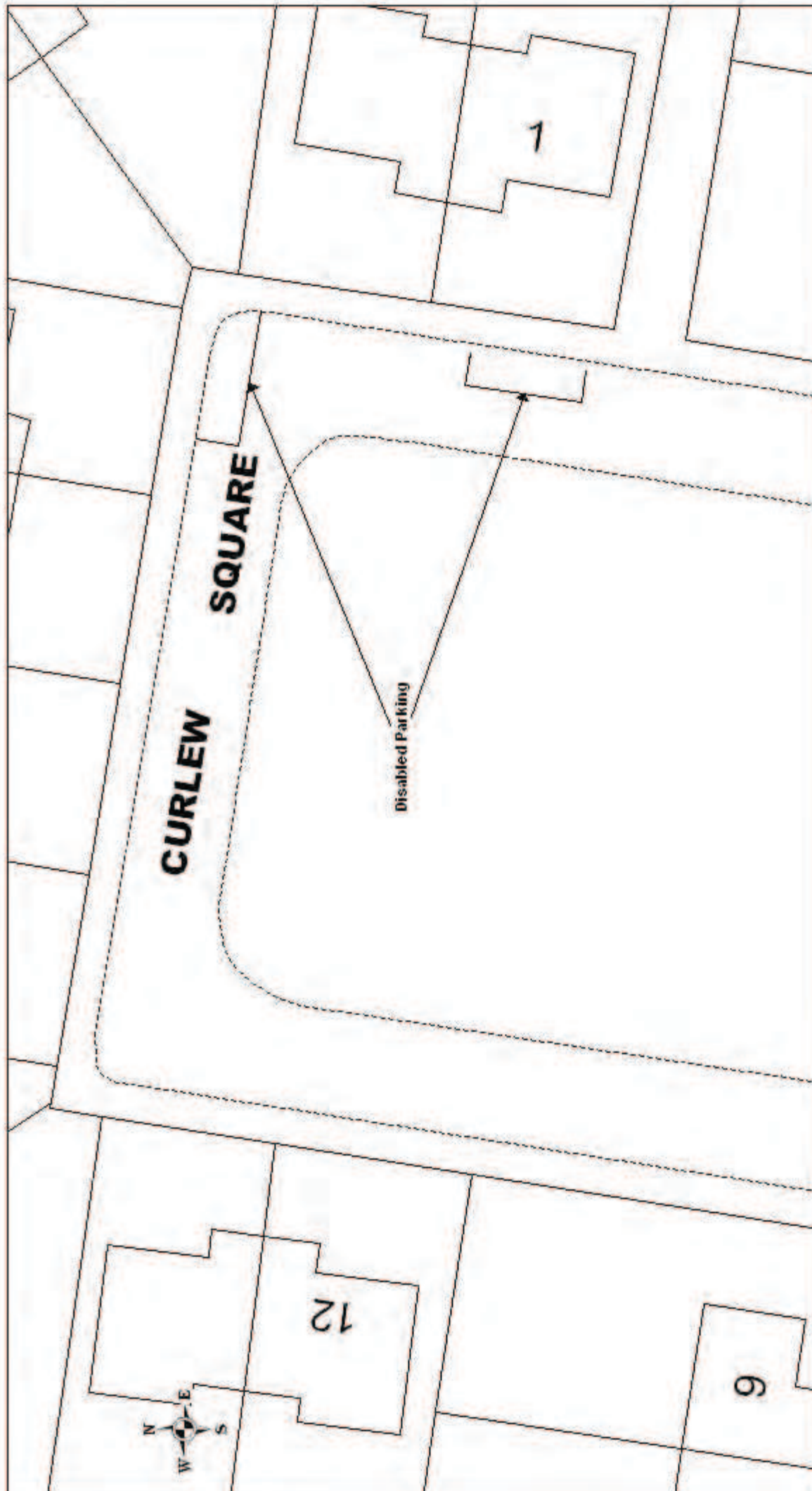


SCALE	1 : 500
DATE	28/02/2012
DRAWING No.	E/TM/01/07/C/008A
DRAWN BY	PJH
CHECKED BY	JF

Cox Row: disabled parking bay

© Crown copyright. All rights reserved.
Eastleigh Borough Council
Document No. 1600/1602 (2006)





<p>Curlew Square: disabled parking bays</p> <p><small>© Crown copyright. All rights reserved. Eastleigh Borough Council Document No. 1655 (Rev. 03/05)</small></p>	SCALE	1 : 250
	DATE	28/02/2012
	DRAWING No.	E/T/M/01/07/C/009
	DRAWN BY	FJH
	CHECKED BY	JF



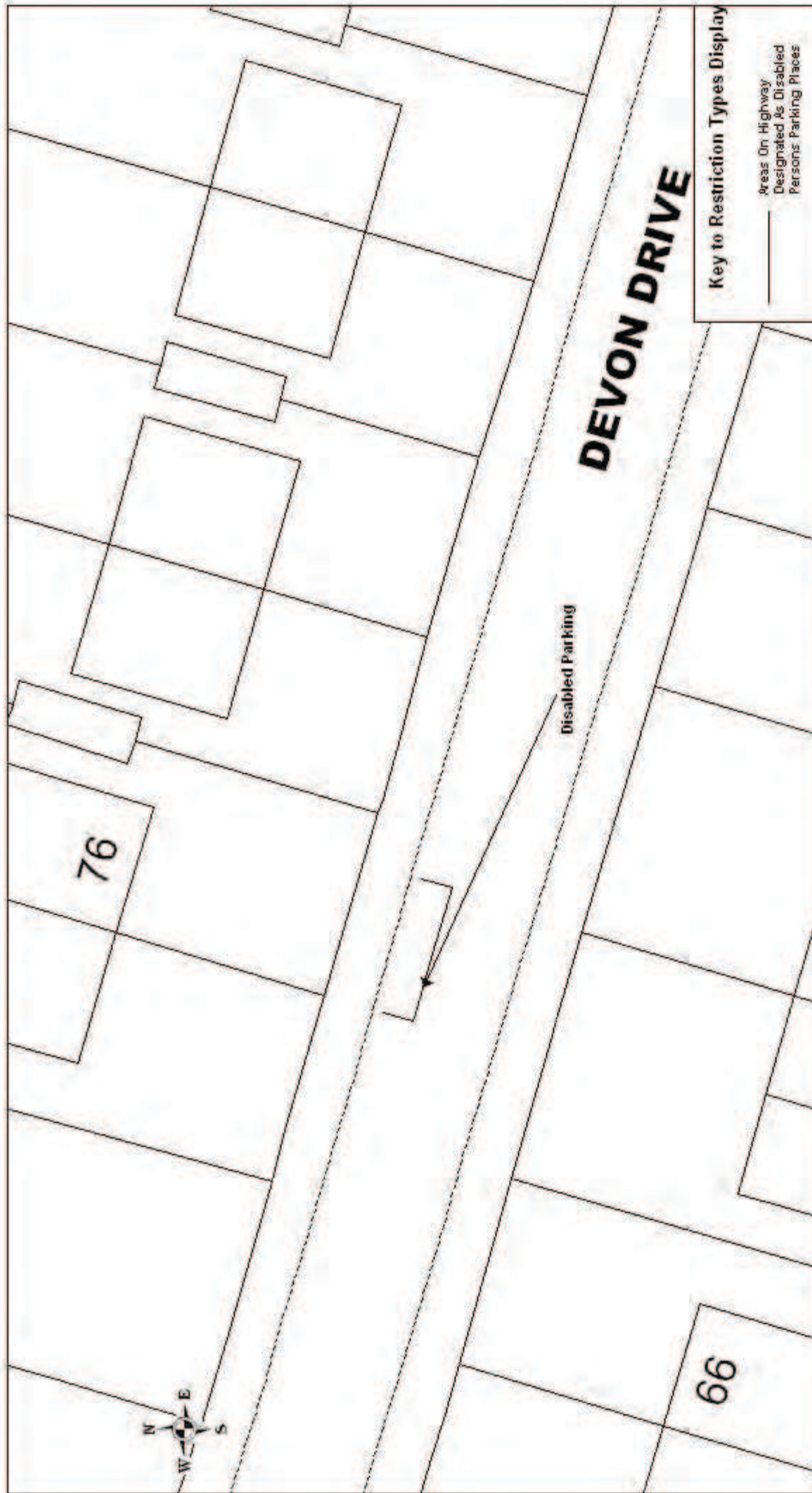


SCALE	1 : 500
DATE	28/02/2012
DRAWING No.	E/TM/01/07/C/010
DRAWN BY	PJH
CHECKED BY	JF

© Crown copyright. All rights reserved.
 Eastleigh Borough Council
 Licence No. 10001822/2005

Devon Drive, disabled parking bay





© Crown copyright. All rights reserved.
 Eastleigh Borough Council
 Licence No. 10001832 (2005)

Devon Drive: disabled parking bay





© Crown copyright. All rights reserved.
 Eastleigh Borough Council
 License No. 10001822 (2005)

Falcon Square: disabled parking bays



SCALE	1 : 500
DATE	28/02/2012
DRAWING No.	E/TM/01/07/C/011a
DRAWN BY	PJH
CHECKED BY	JF

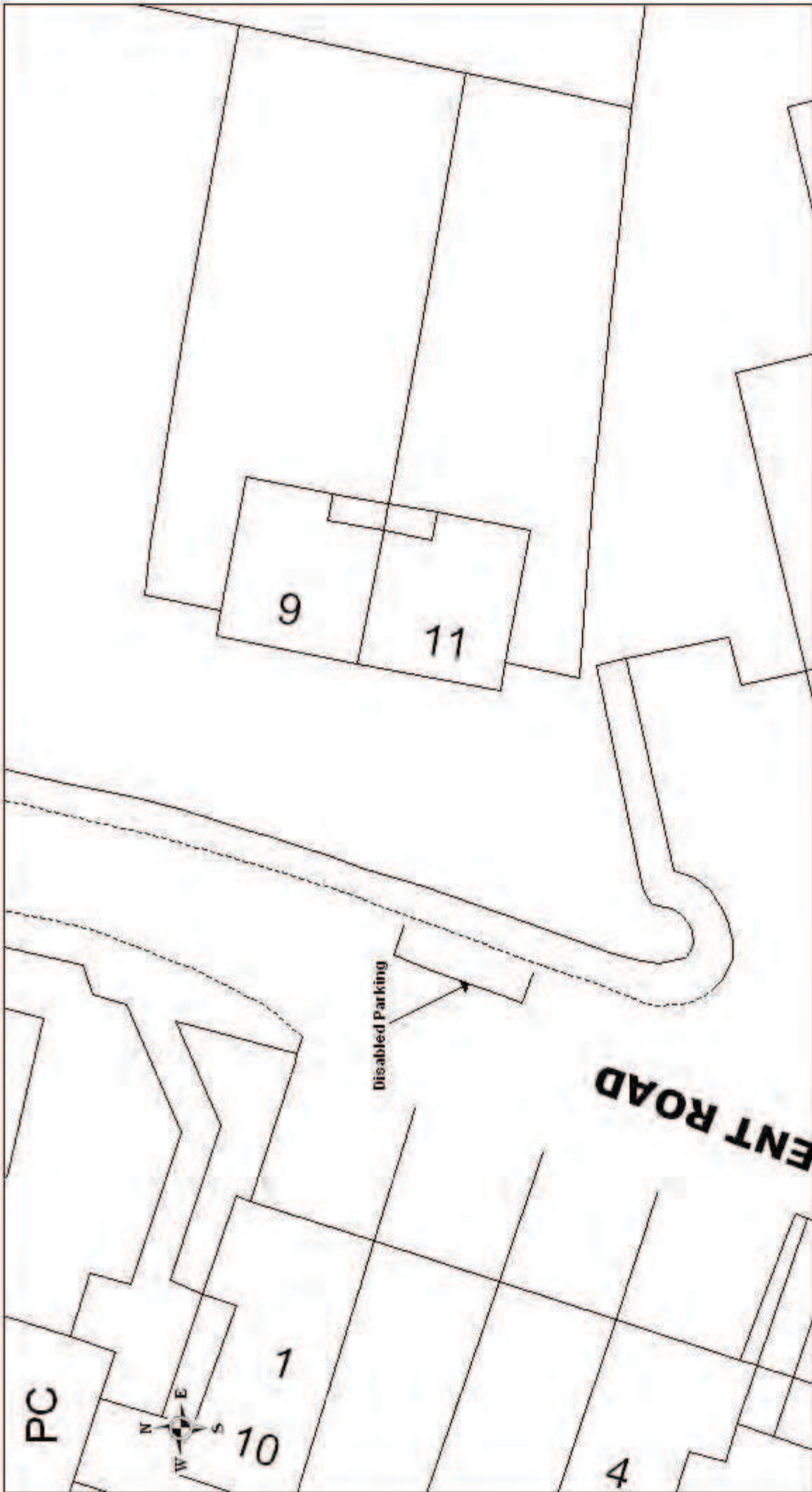


SCALE	1 : 500
DATE	28/02/2012
DRAWING No.	E/TM/01/07/C/012
DRAWN BY	P.J.H
CHECKED BY	J.F

Greenfinch Close: disabled parking bay

© Crown copyright. All rights reserved.
Eastleigh Borough Council
Licence No. 100018322 2005



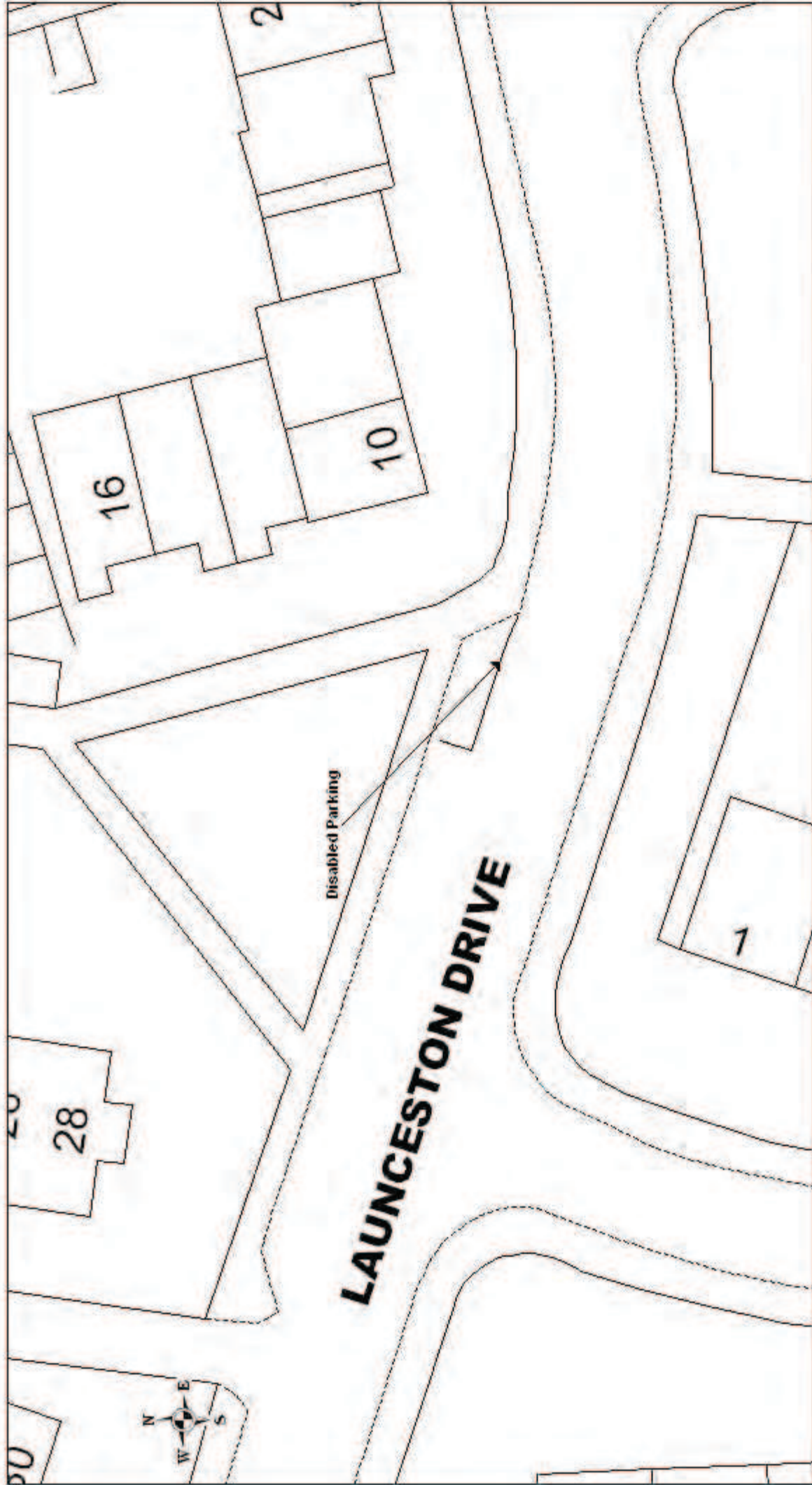


SCALE	1 : 250
DATE	28/02/2012
DRAWING No.	E/TM/01/07/C/013
DRAWN BY	PJH
CHECKED BY	JF

Kent Road: disabled parking bays

© Crown copyright. All rights reserved.
Eastleigh Borough Council
Document No. 100018022 (2005)






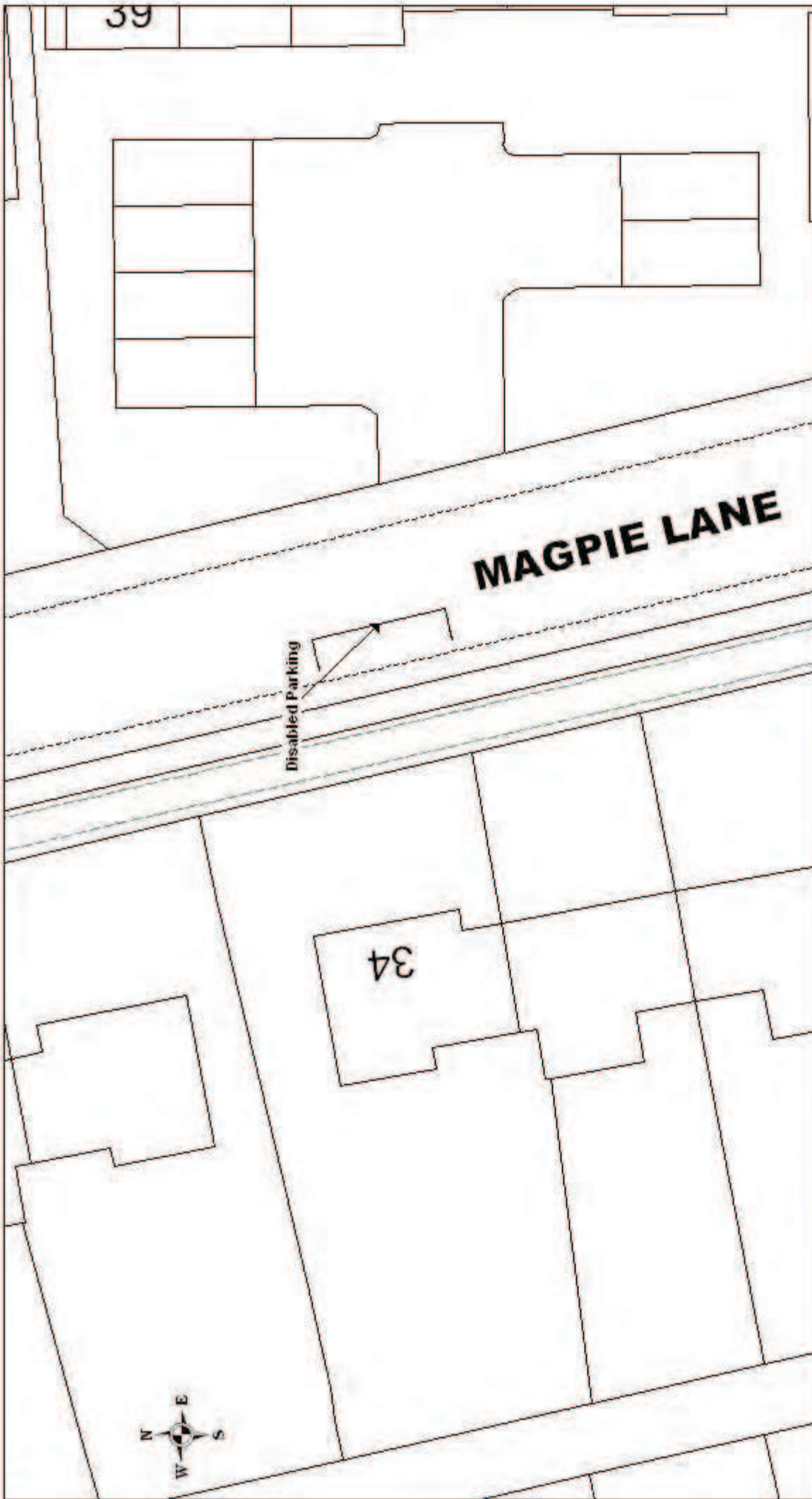
Launceston Drive, disabled parking bay

© Crown copyright. All rights reserved.
Eastleigh Borough Council
Document No. 1600 (R02) (2005)

SCALE	1 : 250
DATE	28/02/2012
DRAWING No.	E/T/M/01/07/C/014
DRAWN BY	PJH
CHECKED BY	JF



<p style="text-align: center;">Lewes Close: disabled parking bay</p> <p style="text-align: right; font-size: small;">© Crown copyright. All rights reserved. Eastleigh Borough Council Document No. 1600/1602 (2005)</p>		SCALE	1 : 250
		DATE	28/02/2012
		DRAWING No.	E/TM/01/07/C/015
		DRAWN BY	PJH
		CHECKED BY	JF
			

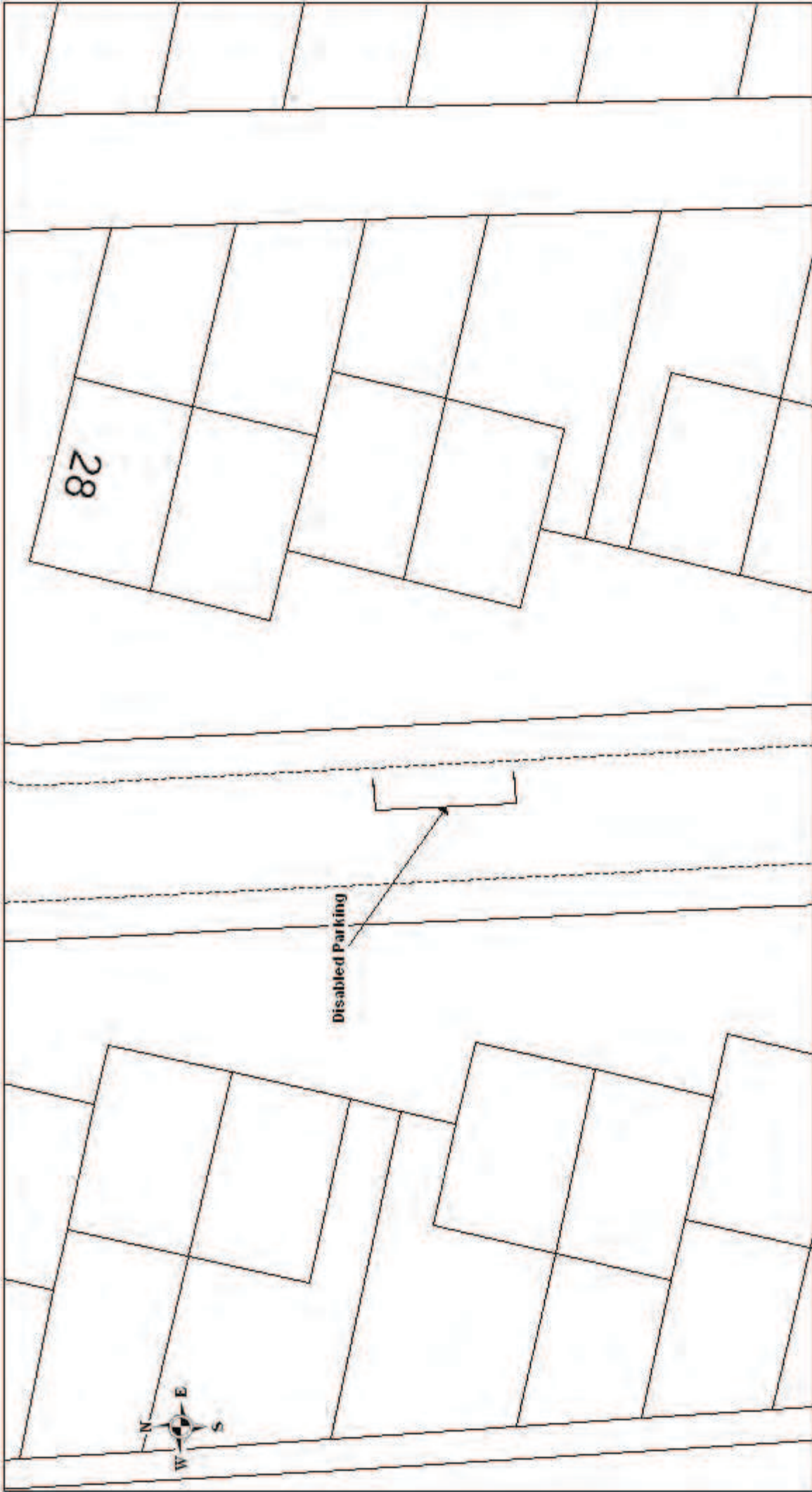


SCALE	1 : 250
DATE	28/02/2012
DRAWING No.	E/TM/01/07/C/016
DRAWN BY	PJH
CHECKED BY	JF

Magpie Lane: disabled parking bay

© Crown copyright. All rights reserved.
Eastleigh Borough Council
Licence No. 100018322 (2005)





Mottisfont Road: disabled parking bay

© Crown copyright. All rights reserved.
Eastleigh Borough Council
Document No. 1000/18/22 (2005)

SCALE	1 : 250
DATE	28/02/2012
DRAWING No.	E/TM/01/07/C/017
DRAWN BY	PJH
CHECKED BY	JF



SCALE	1 : 250
DATE	28/02/2012
DRAWING No.	E/TM/01/07/C/018
DRAWN BY	PJH
CHECKED BY	JF

Nightingale Avenue, disabled parking bay

© Crown copyright. All rights reserved.
Eastleigh Borough Council
Document No. 1600 (02/12/2006)





Oxburgh Close: disabled parking bay

© Crown copyright. All rights reserved.
 Eastleigh Borough Council
 Drawing No. E/TM/01/07/C/020



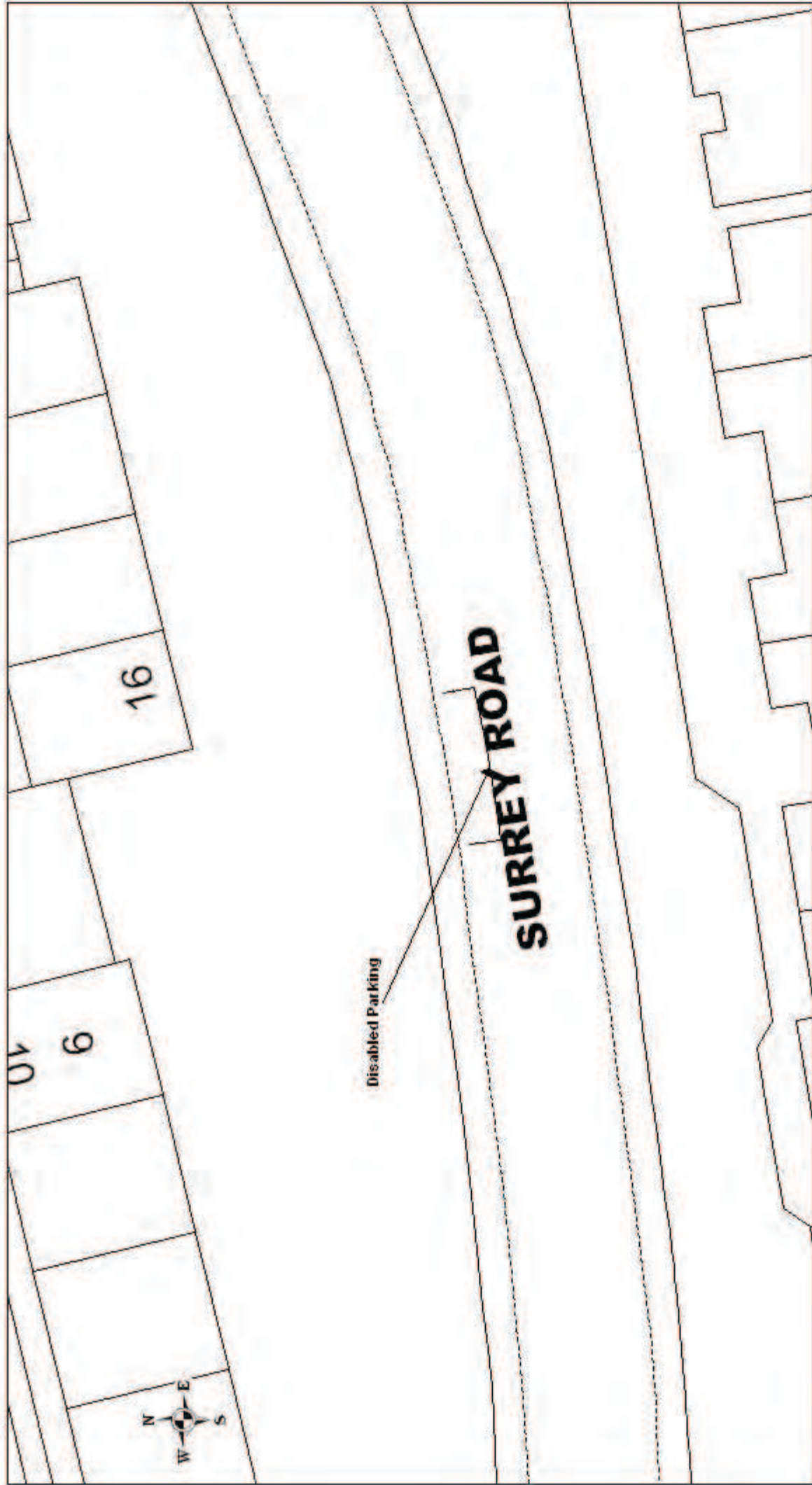
SCALE	1 : 250
DATE	28/02/2012
DRAWING No.	E/TM/01/07/C/020
DRAWN BY	P.J.H
CHECKED BY	J.F



Sparrow Square: disabled parking bay

© Crown copyright. All rights reserved.
 Eastleigh Borough Council
 Licence No. 100018322 (2005)

SCALE	1 : 250
DATE	28/02/2012
DRAWING No.	E/TM/01/07/C/022
DRAWN BY	PJH
CHECKED BY	JF



© Crown copyright. All rights reserved.
 Eastleigh Borough Council
 Document No. 1000 (R02) (2005)

Surrey Road: disabled parking bay



SCALE	1 : 250
DATE	28/02/2012
DRAWING No.	E/TM/01/07/C/023
DRAWN BY	PJH
CHECKED BY	JF



SCALE	1 : 250
DATE	28/02/2012
DRAWING No.	E/TMM/01/07/C/025
DRAWN BY	PJH
CHECKED BY	JF

Swift Close: disabled parking bay

© Crown copyright. All rights reserved.
Eastleigh Borough Council
Licence No. 100018322 (2005)



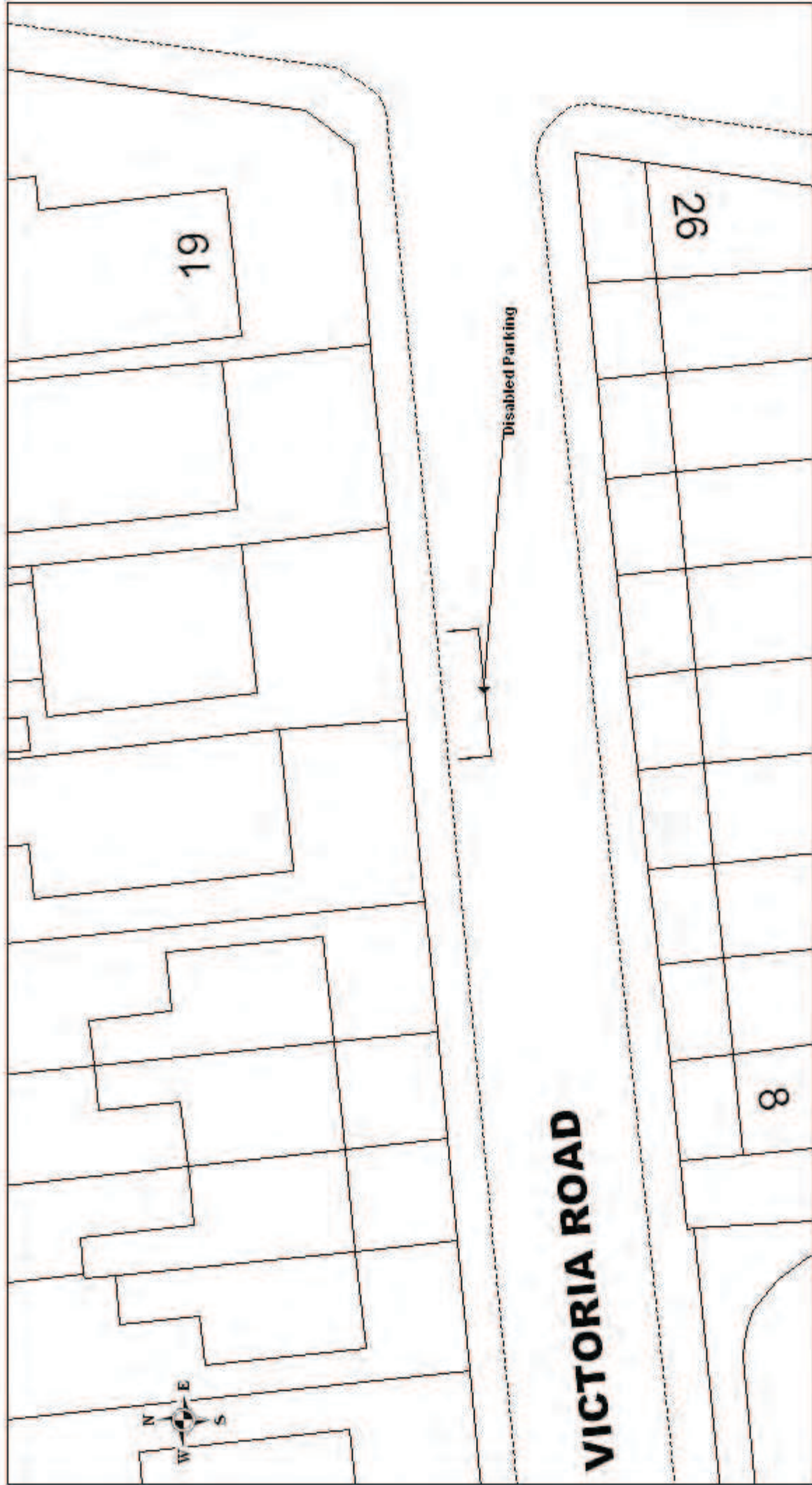


The Quadrangle: disabled parking bay

© Crown copyright. All rights reserved.
 Eastleigh Borough Council
 Document No. 1600/1602/2006

SCALE	1 : 250
DATE	28/02/2012
DRAWING No.	E/TM/01/07/C/026
DRAWN BY	FJH
CHECKED BY	JF





 <p>Victoria Road: disabled parking bay</p> <p style="font-size: small;">© Crown copyright. All rights reserved. Eastleigh Borough Council Document No. 100018262 (2005)</p>	SCALE	1 : 250
	DATE	28/02/2012
	DRAWING No.	E/TM/01/07/C/027
	DRAWN BY	PJH
	CHECKED BY	JF