

DATED 12 AUGUST 2010

THE DERBYSHIRE COUNTY COUNCIL

ROAD TRAFFIC REGULATION ACT 1984

THE DERBYSHIRE COUNTY COUNCIL

(VARIOUS STREETS, HADY, CHESTERFIELD)

(PROHIBITION OF WAITING) ORDER 2010

J McELVANEY

MATLOCK

THE DERBYSHIRE COUNTY COUNCIL
ROAD TRAFFIC REGULATION ACT 1984
(VARIOUS STREETS, HADY, CHESTERFIELD)
(PROHIBITION OF WAITING) ORDER 2010

The Derbyshire County Council in exercise of its powers under Sections 1 and 2 of the Road Traffic Regulation Act 1984 (as amended) ("the Act") and of all other enabling powers, after consultation with the Chief Officer of Police in accordance with Part III of Schedule 9 to the Act hereby makes the following Order:-

1 CITATION

This Order shall come into operation on the twenty-third day of August 2010 and may be cited as The Derbyshire County Council (Various Streets, Hady, Chesterfield) (Prohibition of Waiting) Order 2010.

2 INTERPRETATION

In this Order:-

2.1 "Vehicle" means any mechanically propelled vehicle intended or adapted for use on roads.

2.2 "Public Service Vehicle" has the meaning ascribed to it by Section 1 of the Public Passenger Vehicles Act 1981, that is to say it shall mean a motor vehicle (other than a tramcar) which –

(i) being a vehicle adapted to carry more than eight passengers, is used for carrying passengers for hire or reward; or

(ii) being a vehicle not so adapted, is used for carrying passengers for hire or reward at separate fares in the course of a business or carrying passengers.

2.3 "Disabled person's badge" has the same meaning as in the Disabled Persons (Exemptions for Disabled Persons) (England) Regulations 2000.

2.4 "Disabled person's vehicle" means a vehicle displaying a disabled person's badge in the relevant position as set out under Regulation 4 of the Local Authorities Orders (Exemptions for Disabled Persons) (England) Regulations 2000.

2.5 "The 2004 Act" means Traffic Management Act 2004.

2.6 "CEO" means Civil Enforcement Officer and has the same meaning as in Section 76 of the 2004 Act.

2..7 "Loading and Unloading" means the transference, from or to a Vehicle, to or from premises, of goods;

2.8 "Goods" means goods or burden of any description

3 WAITING RESTRICTIONS

3.1 Save as provided in articles 4, 5 and 6 of this Order no person shall except upon the direction or with the permission of a Police Constable in uniform, or a CEO or a Parking Attendant, cause or permit any vehicle to wait at any time on any day on the lengths of road specified in the Schedule to this Order.

4 GENERAL EXEMPTIONS

4.1 Nothing in Article 3 shall render it unlawful to cause or permit any vehicle to wait in the lengths of road referred to therein for so long as may be necessary to enable:-

- (i) a person to board or alight from the vehicle;
- (ii) the vehicle, if it cannot conveniently be used for such purpose in any other road, to be used in connection with any of the following operations namely:-
 - (a) building, industrial or demolition operations;
 - (b) the removal of any obstruction to traffic;
 - (c) the maintenance, improvement of reconstruction of the said lengths of road; or
 - (d) the laying, erection, alteration or repair in, or on land adjacent to the said lengths of road of any sewer or of any main, pipe or apparatus for the supply of gas, water or electricity or of any telecommunication apparatus as defined in the Telecommunications Act 1984;
- (iii) the vehicle, if it cannot conveniently be used for such purpose in any other road, to be used in the service of a local authority or a water authority in pursuance of statutory powers or duties;
- (iv) the vehicle to be used for the purpose of delivering or collecting postal packets as defined in The Postal Services Act 2000;
- (v) the vehicle to take in petrol, oil, water or air from any garage situated on or adjacent to the said lengths of road;
- (vi) the vehicle to wait at or near to any premises situated or adjacent to the said lengths of road for so long as such waiting by that vehicle is reasonably necessary in connection with any wedding or funeral;
- (vii) the vehicle to be used for fire brigade, ambulance or police purposes;

or

(viii) goods to be loaded or unloaded from the vehicle.

5 DISABLED PERSONS' EXEMPTIONS

5.1 Nothing in Article 3.1 shall render it unlawful to cause or permit a disabled person's vehicle which displays in the relevant position a disabled person's badge, and a parking disc (on which the driver, or other person in charge of the vehicle, has marked the time at which the period of waiting began) to wait in the lengths of road referred to in that Article for a period not exceeding three hours (not being a period separated by an interval of less than one hour from a previous period of waiting by the same vehicle in the same length or on the same side of road on the same day).

5.2 A vehicle displays a disabled person's badge in the relevant position if:-

- (i) in the case of a vehicle fitted with a front windscreen, the badge is exhibited thereon on the near side of and immediately behind the windscreen and with its front facing forward so as to be legible from outside the vehicle; or
- (ii) in the case of a vehicle not fitted with a front windscreen, the badge is exhibited in a conspicuous position on the vehicle.

5.3 A vehicle displays a disabled person's badge in the relevant position if:-

- (i) in the case of a vehicle fitted with a dashboard or fascia panel, the badge is exhibited thereon so that Part I of the badge is legible from outside the vehicle; or
- (ii) in the case of a vehicle not fitted with a dashboard or fascia panel, the badge is exhibited in a conspicuous position on the vehicle so that Part I of the badge is legible from outside the vehicle.

5.4 A vehicle displays a parking disc in the relevant position if:-

- (i) in the case of a vehicle fitted with a dashboard or fascia panel, the disc is exhibited thereon so that the quarter-hour period during which the period of waiting began is legible from outside the vehicle; or
- (ii) in the case of a vehicle not so fitted, the disc is exhibited in a conspicuous position on the vehicle so that the quarter-hour period during which the period of waiting began is legible from outside the vehicle".

6 PUBLIC SERVICE VEHICLES

6.1 Nothing in Article 3 shall apply to a Public Service Vehicle.

7 EFFECT OF ORDER

7.1 The prohibitions and restrictions imposed by this Order shall be in addition to and not in derogation from any restrictions or requirements imposed by any regulations made or having effect as if made under the Act of 1984 or by or under any other enactment.

SCHEDULE

NO WAITING AT ANY TIME

Piccadilly Road, Chesterfield

(Western side)

From its junction with the A632 Hady Hill to a point 20 metres north east of its junction with Wain Avenue.

From a point 81 metres north east of its junction with Wain Avenue in a north easterly direction for a distance of 137 metres.

From a point 64 metres south of its junction with Wain Avenue in a northerly direction to its junction with Crow Lane.

(Eastern side)

From its junction with the A632 Hady Hill in a north easterly direction for a distance of 161 metres.

From a point 237 metres north east of its junction with A632 Hady Hill in a northerly direction for a distance of 31 metres.

From a point 147 metres south of its junction with Crow Lane in a southerly direction for a distance of 23 metres.

From its junction with Crow Lane in a southerly direction for a distance of 23 metres.

Camlough Walk

(Southern side)

From its junction with Wain Avenue in a south westerly direction for a distance of 40 metres.

(Northern side)

From its junction with Wain Avenue in a south westerly direction for a distance of 21 metres.

Kariba Close

(Both sides)

From its junction with Wain Avenue in a westerly direction for a distance of 13 metres.

Foyers Way

(Both sides)

From its junction with Wain Avenue in a westerly direction for a distance of 10.5 metres.

Excalibur Way

(Both sides)

From its junction with Wain Avenue in a westerly direction for a distance of 11.5 metres.

Wharton Drive

(Both sides)

From its junction with Wain Avenue in a westerly direction for a distance of 19 metres.

Owen Falls Avenue
(Both sides)

From its junction with Wain Avenue in a northerly direction for a distance of 11 metres.

Marine Drive
(Both sides)

From its junction with Wain Avenue in a southerly direction for a distance of 12 metres.

Wain Avenue

(South eastern side)

From its junction with Camlough Walk in a south easterly direction for a distance of 97 metres to its junction with Piccadilly Road.

(North Western side)

From its junction with Piccadilly Road in a north westerly direction for a distance of 111 metres.

(Western side)

From its junction with Kariba Close in a northerly direction for a distance of 7 metres.

From a point 16 metres south of its junction with Foyers Way to a point 16 metres north of its junction with Foyers Way.

(Eastern side)

From a point 8 metres south of the southern kerb line of its junction with Wharton Drive in a southerly direction for a distance of 20 metres.

From a point 8 metres north of the northern kerb line of its junction with Wharton Drive in a northerly direction for a distance of 23 metres.

(Northern side)

From its junction with Piccadilly Road in a westerly direction for a distance of 10 metres.

From its junction with Owen Falls Avenue in a westerly direction for a distance of 70 metres.

(Eastern side)

From its junction with Piccadilly Road in a westerly direction for a distance of 26 metres.

From its junction with Marine Drive in a westerly direction for a distance of 63 metres.

THE COMMON SEAL of the Derbyshire)
County Council was hereunto affixed)
the Twelfth day of August Two)
thousand and Ten in the presence of:-)

Jacqueline Corin

Assistant

Director of Legal Services

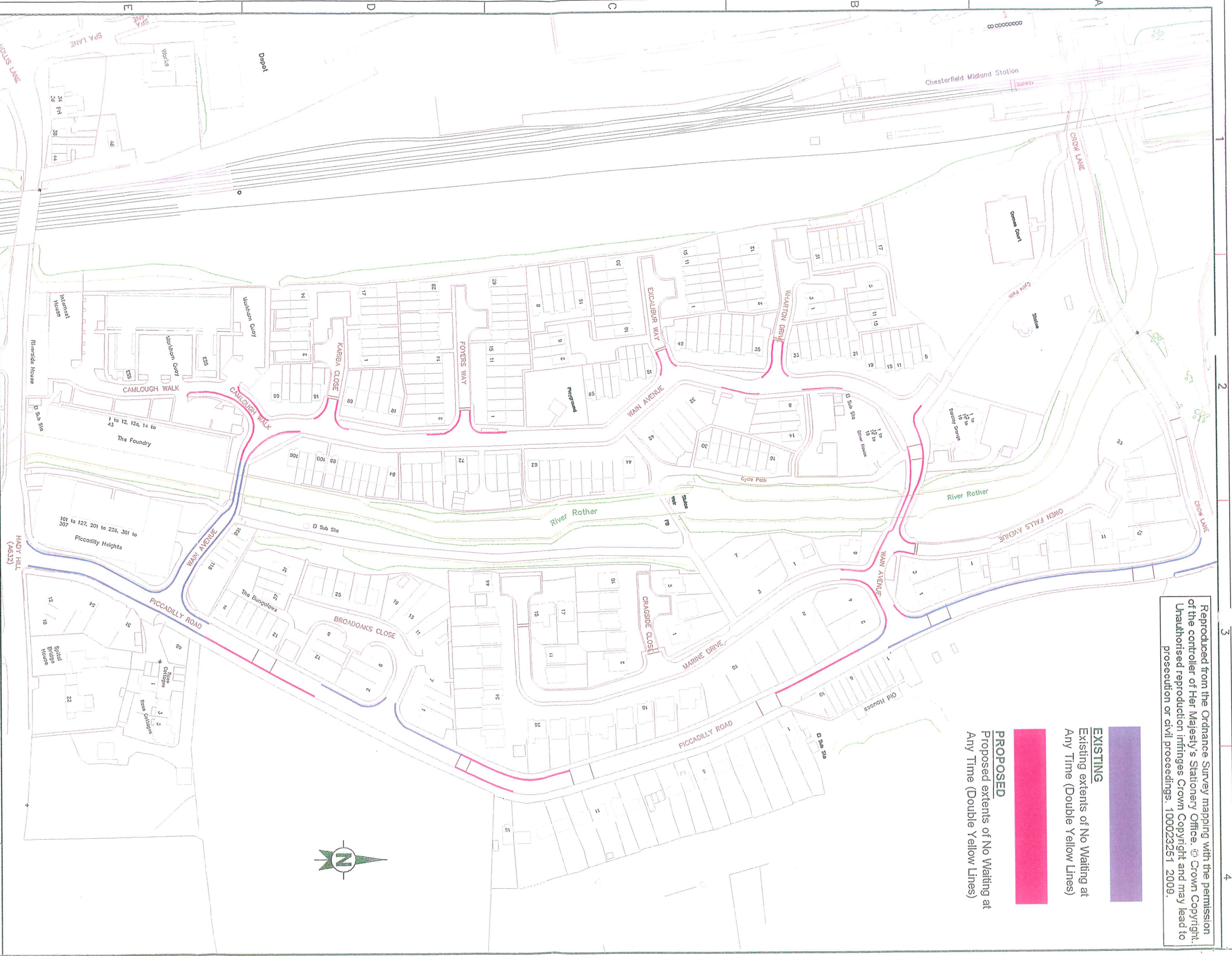
Number in Seal

Book 2010/815

Reproduced from the Ordnance Survey mapping with the permission of the controller of Her Majesty's Stationery Office. © Crown Copyright. Unauthorised reproduction infringes Crown Copyright and may lead to prosecution or civil proceedings. 100023251 2009.

EXISTING
Existing extents of No Waiting at Any Time (Double Yellow Lines)

PROPOSED
Proposed extents of No Waiting at Any Time (Double Yellow Lines)

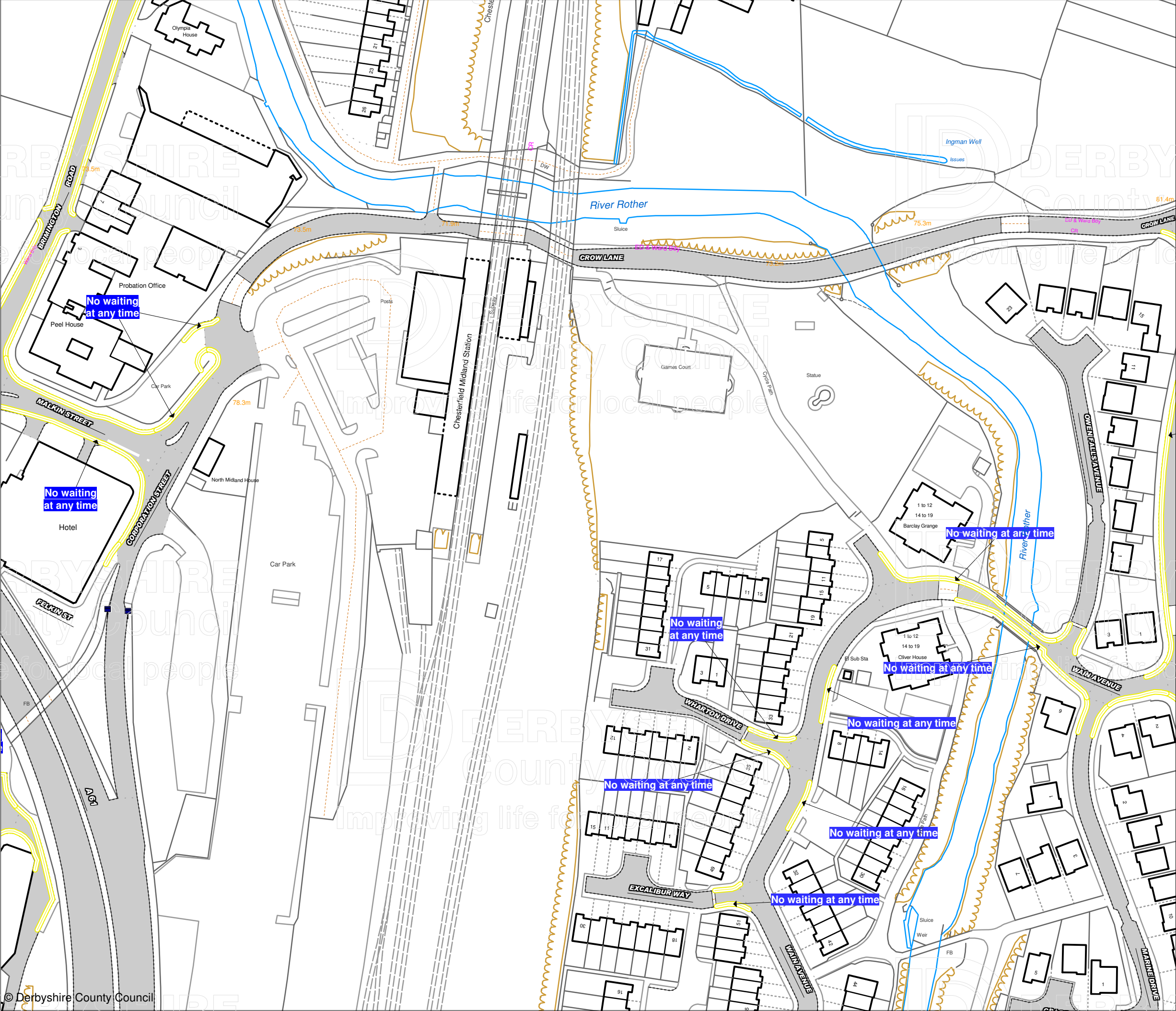


DERBYSHIRE
COUNTY COUNCIL
IAN W STEPHENSON
BSc CEng M.I.C.E M.I.H.T
STRATEGIC DIRECTOR OF ENVIRONMENTAL SERVICES

PROJECT TITLE
PROPOSED_TRAFFIC
MANAGEMENT
SCHEME

DRAWING TITLE
PICCADILLY_ROAD_&
WAIN_AVENUE_ESTATE
CHESTERFIELD

DRAWN BY R.HANDBURY
DATE NOVEMBER'09
SCALE NTS
ORIGINAL DRAWING SIZE 210 x 298 (A4)
DRAWING NO. PROPOSAL_DWG



**Prohibition and Restriction
of Waiting, On Street
Parking and Clearways.**

This map is reproduced from Ordnance Survey material with the permission of Ordnance Survey on behalf of the Controller of Her Majesty's Stationery Office (c) Crown Copyright. Unauthorised reproduction infringes Crown copyright and may lead to prosecution or civil proceedings.
Derbyshire County Council
Licence No: 100023251 2009

CONFIRMED

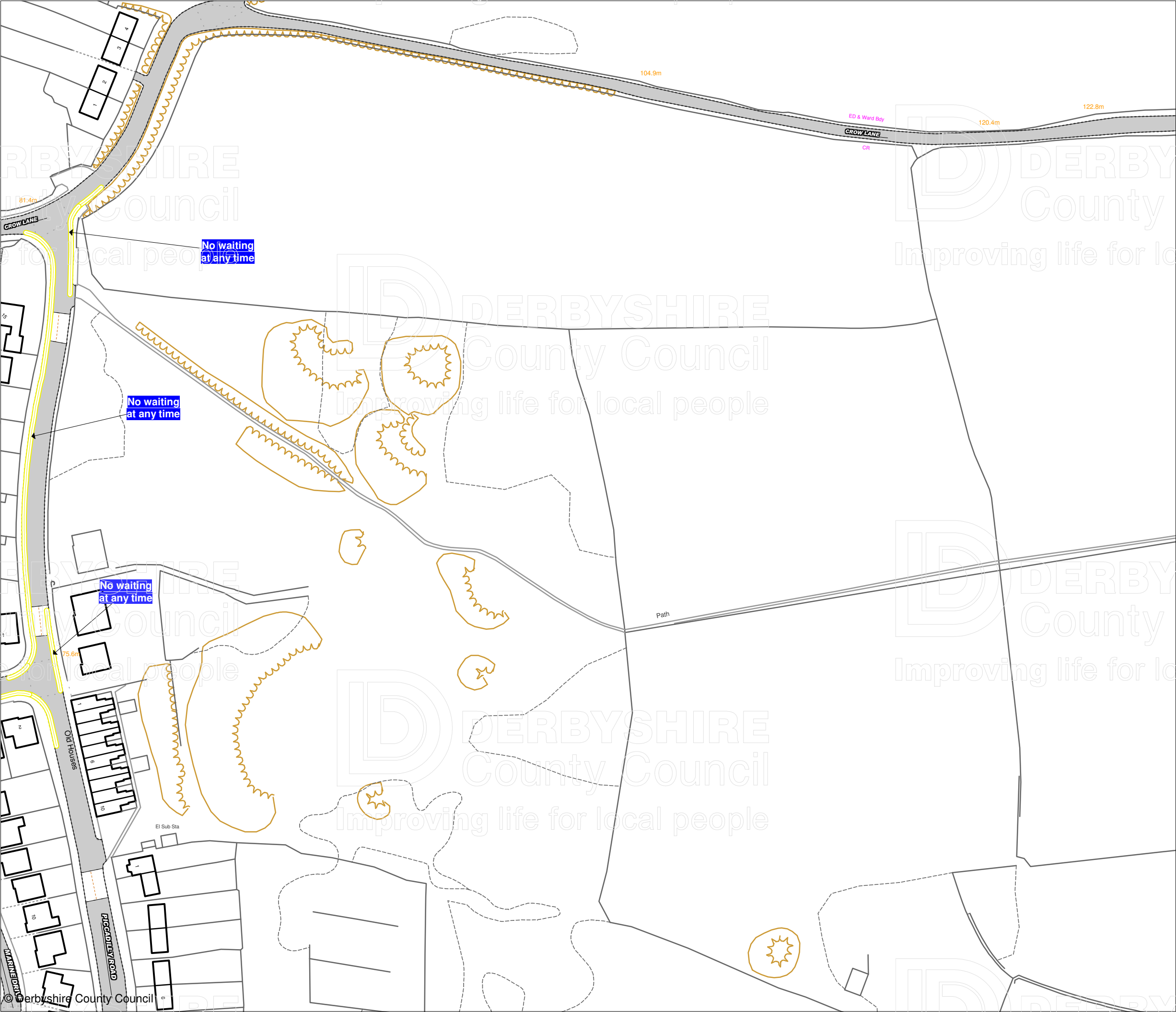




DERBYSHIRE
County Council
Improving life for local people

IAN W.STEPHENSON BSc., CEng.,MICE,MIHT
Strategic Director of Environmental Services

DRAWING TITLE	
Tile Ref: CS105	
SCALE	1 : 1250
DATE	23/08/2010
DRAWING No.	1
DRAWN BY	



**Prohibition and Restriction
of Waiting, On Street
Parking and Clearways.**

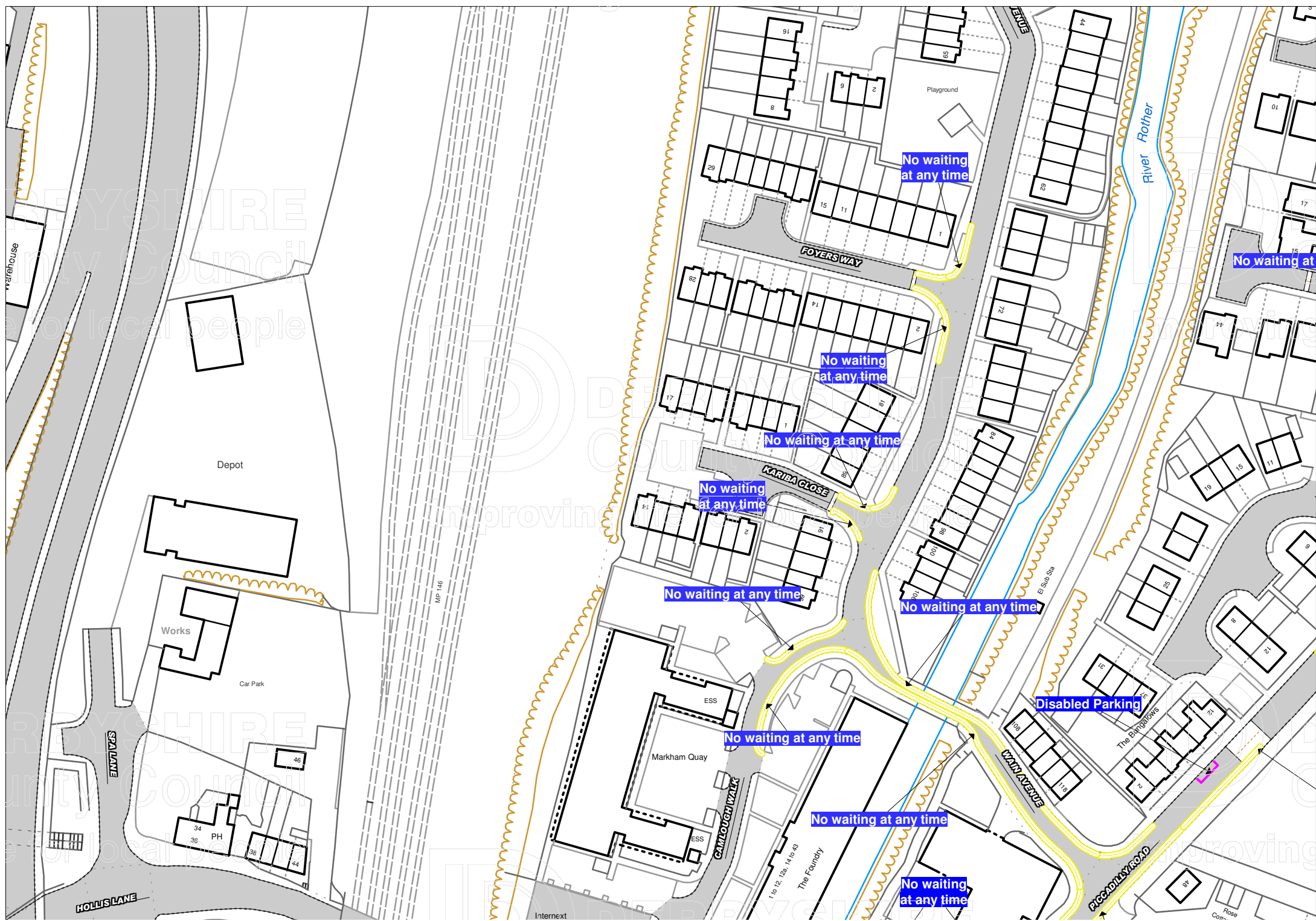
This map is reproduced from Ordnance Survey material with the permission of Ordnance Survey on behalf of the Controller of Her Majesty's Stationery Office (c) Crown Copyright. Unauthorised reproduction infringes Crown copyright and may lead to prosecution or civil proceedings.
Derbyshire County Council
Licence No: 100023251 2009

CONFIRMED



DERBYSHIRE
County Council
Improving life for local people
IAN W.STEPHENSON BSc., CEng.,MICE,MIHT
Strategic Director of Environmental Services

DRAWING TITLE	
Tile Ref: CS106	
SCALE	1 : 1250
DATE	23/08/2010
DRAWING No.	1
DRAWN BY	



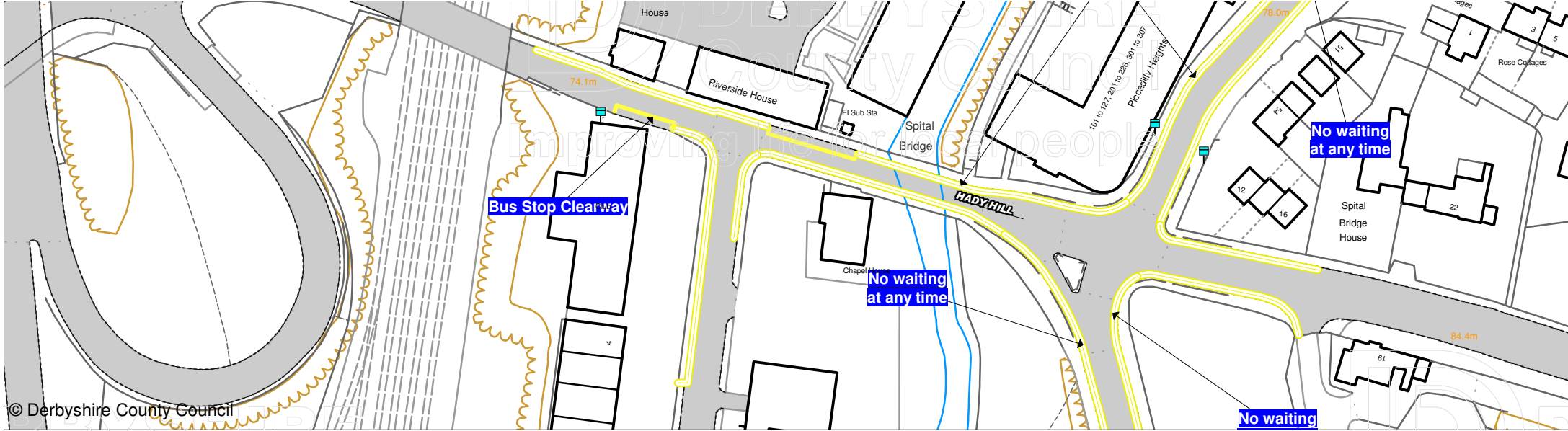


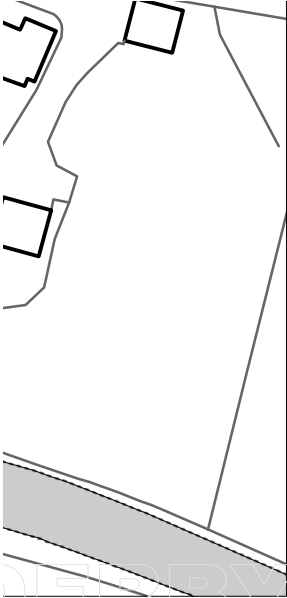
Prohibition and Restriction of Waiting, On Street Parking and Clearways.


This map is reproduced from Ordnance Survey material with the permission of Ordnance Survey on behalf of the Controller of Her Majesty's Stationery Office (c) Crown Copyright. Unauthorised reproduction infringes Crown copyright and may lead to prosecution or civil proceedings.
Derbyshire County Council
Licence No: 100023251 2009

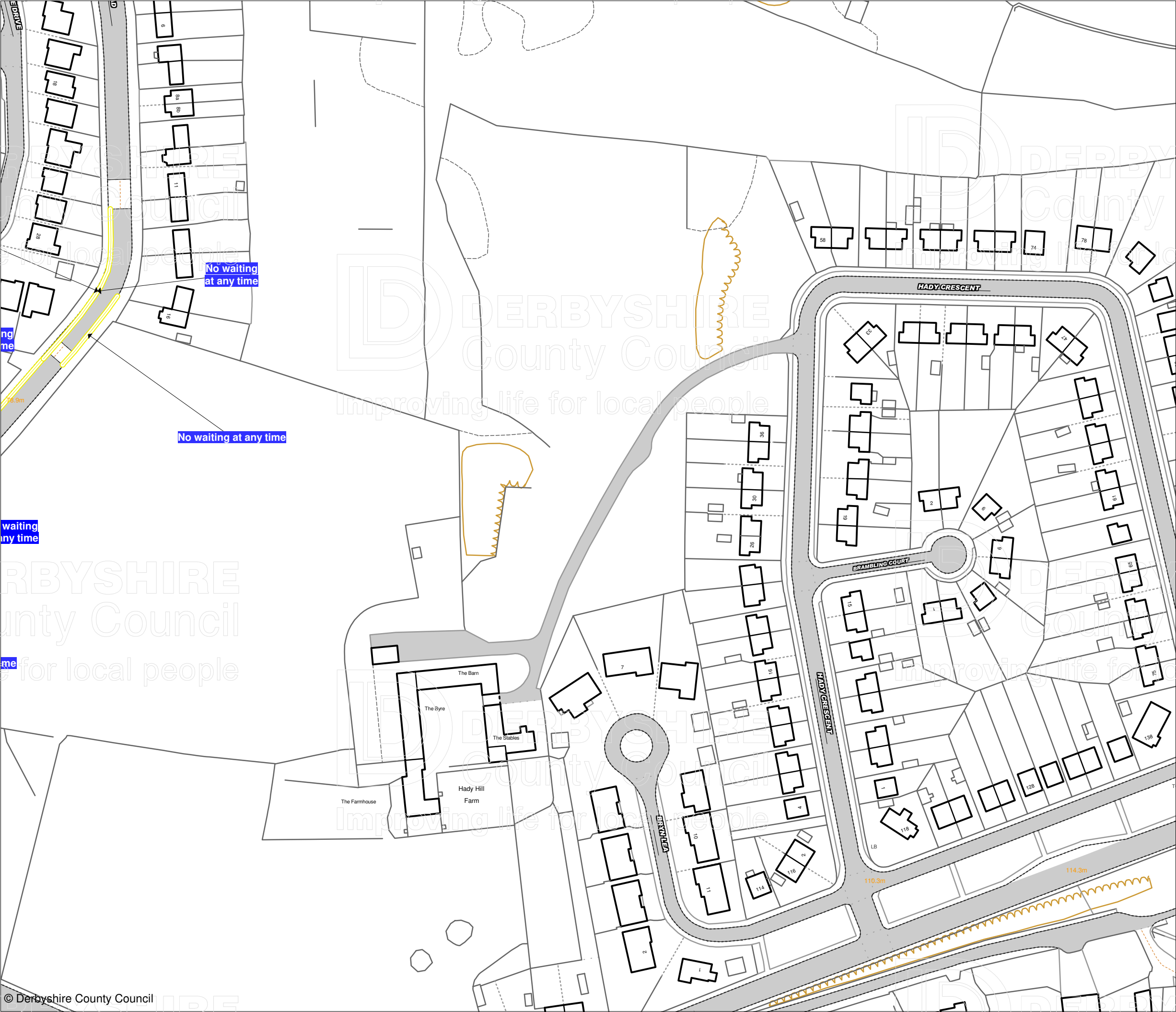
CONFIRMED







 Improving life for local people IAN W.STEPHENSON BSc., CEng.,MICE,MIHT Strategic Director of Environmental Services	
DRAWING TITLE	
Tile Ref: CT105	
SCALE	1 : 1250
DATE	23/08/2010
DRAWING No.	5
DRAWN BY	



**Prohibition and Restriction
of Waiting, On Street
Parking and Clearways.**

This map is reproduced from Ordnance Survey material with the permission of Ordnance Survey on behalf of the Controller of Her Majesty's Stationery Office (c) Crown Copyright. Unauthorised reproduction infringes Crown copyright and may lead to prosecution or civil proceedings.
Derbyshire County Council
Licence No: 100023251 2009

CONFIRMED



IAN W.STEPHENSON BSc., CEng.,MICE,MIHT
Strategic Director of Environmental Services

DRAWING TITLE

Tile Ref: CT106

SCALE 1 : 1250

DATE 23/08/2010

DRAWING No. 4

DRAWN BY
