

**HERTFORDSHIRE COUNTY COUNCIL**  
**THE HERTFORDSHIRE (VARIOUS ROADS, HEMEL HEMPSTEAD)**  
**(RESTRICTION OF WAITING) ORDER 2020**

NOTICE is given that the Hertfordshire County Council has made an Order under the Road Traffic Regulation Act 1984 to make permanent the waiting restrictions in those lengths of road in Hemel Hempstead as specified in the Schedule to this Notice. This Order makes permanent the provisions of The Hertfordshire (Various Roads, Hemel Hempstead) (Restriction of Waiting) (Experimental) Order 2019 and will come into effect on Monday 17 August 2020.

Documents giving more detailed particulars of the Order may be inspected, during normal office hours, from 12 August 2020 to 23 September 2020 at Main Reception, Hertfordshire County Council, County Hall, Pegs Lane, Hertford. However due to the current COVID 19 emergency, in particular the restrictions imposed on Social Distancing, this will only be by prior arrangement tel 01992 555553. The documents may also be viewed online at [www.hertfordshire.gov.uk/trafficorders](http://www.hertfordshire.gov.uk/trafficorders) by selecting Dacorum and looking at Ref: D01318

Enquiries relating to the Order should be referred to the Highways Engineer concerned Highways Engineer concerned Ian Richardson tel: 01992 658486 or [ian.richardson@hertfordshire.gov.uk](mailto:ian.richardson@hertfordshire.gov.uk)

Any person wishing to question the validity of the Order, or of any provision contained in it, on the grounds that it is not within the powers conferred by the Road Traffic Regulation Act 1984, or on the grounds that any requirement of the Act or any Instrument made under it has not been complied with in relation to the Order, may within 6 weeks from the date of this Notice apply to the High Court for this purpose.

**SCHEDULE:** No waiting at any time – effecting those sections of road herein listed and as set out in the Order and accompanying plan - Parts of Three Cherry Trees Lane, Finway Road, Swallowdale Lane, Cherry Tree Lane, Buncefield Lane and Boundary Park, Breakspear Way between its junction with Maylands Avenue and Green Lane; Green Lane between its junction with Breakspear Way and Three Cherry Trees Lane and the whole of Boundary Way.

County Hall  
Hertford  
Herts SG13 8DN

12 August 2020  
Mark Kemp  
Director of Environment and Infrastructure

# **HERTFORDSHIRE COUNTY COUNCIL**

## **ROAD TRAFFIC REGULATION ACT 1984**

Date of Order: 04/08/20

Order No: 8373

### **THE HERTFORDSHIRE (VARIOUS ROADS, HEMEL HEMPSTEAD) (RESTRICTION OF WAITING) ORDER 2020**

The Hertfordshire County Council in exercise of their powers under Sections 1, 2 and 3 of the Road Traffic Regulation Act 1984 (which said Act of 1984 is hereinafter referred to as “the Act of 1984”) and Part IV of Schedule 9 of the Act of 1984 and of all other enabling powers and after consultation with the Chief Officer of Police in accordance with Part III of Schedule 9 of the Act of 1984, hereby make the following Order:-

1. This Order may be cited as “The Hertfordshire (Various Roads, Hemel Hempstead) (Restriction of Waiting) Order 2020” and shall come into effect on Monday 17 August 2020.
2. Save as provided in Articles 3, 4 and 5 of this Order no person shall cause or permit any vehicle to wait at any time in those lengths of Three Cherry Trees Lane, Finway Road, Swallowdale Lane, Cherry Tree Lane, Boundary Way, Boundary Park, Buncefield Lane, Green Lane and Breakspear Way, Hemel Hempstead as specified in the Schedule to this Order.
3. (1) Nothing in Article 2 of this Order applies to the lengths of road restricted by that Article (which said lengths of road are referred to in this Article as “the restricted area”) in relation to –
  - (a) a vehicle being used for Fire and Rescue, Ambulance or Police purposes.
  - (b) anything done with the permission of or at the direction of a Police Constable in uniform; or with permission of a Civil Enforcement Officer as defined by the Traffic Management Act 2004 and appointed by Dacorum Borough Council.
  - (c) a vehicle which is prevented from proceeding by circumstances beyond the drivers control or which has stopped in order to avoid injury or damage to persons or property or when required to do so by law;
  - (d) a vehicle which is stationary in order that it may be used for one or more of the purposes specified in sub-Article (2) of this Article and which cannot reasonably be used for such a purpose without stopping in the restricted area;
  - (e) a marked vehicle which, whilst used by a universal service provider in the course of the provision of a universal postal service, is stationary only for so long as may be reasonably necessary for postal packets to be delivered or collected;

In this Article -

The expressions “universal service provider”, “provision of a universal postal Service” and “postal packet” shall bear the same meanings as in Section 65 of the Postal Services Act 2011.

- (2) The “purposes” referred to in sub-Article (1)(d) of this Article are –
  - (a) any operation involving building, demolition or excavation;
  - (b) the removal of any obstruction to traffic;
  - (c) the maintenance, improvement or reconstruction of a road;
  - (d) constructing, improving, maintaining, or cleaning of any street furniture; or
  - (e) the laying, erection, alteration, repair or cleaning of any sewer or of any main pipe or apparatus for the supply of gas, water or electricity, or of any telecommunications apparatus kept or installed for the purposes of a telecommunications code system or of any other telecommunications apparatus lawfully kept installed in any position.
4. Nothing in Article 2 of this Order applies to the lengths of road restricted by that Article (which said lengths of road are referred to in this Article as “the restricted area”) so as to render it unlawful to cause or permit any vehicle to wait only for so long as may be reasonably necessary –
  - (a) to enable goods to be loaded on or unloaded from the vehicle from or to premises adjacent to the restricted area; or
  - (b) to enable a passenger to board or alight and to load and unload any luggage.

5. (1) Nothing in Article 2 of this Order shall render it unlawful to cause or permit a disabled person's vehicle which displays in the relevant position a disabled person's badge and a parking disc, to wait at any time in the lengths of road specified in the Schedule of this Order for a period not exceeding 3 hours (not being a period separated by an interval of less than 1 hour from a previous period of waiting by the same vehicle in the same length of road).
- (2) In this Article -
- “disabled person's vehicle” has the same meaning as in Section 142(1) of the Act of 1984;
- “disabled person's badge” has the same meaning as given in Regulation 3(1) of The Local Authorities' Traffic Orders (Exemptions for Disabled Persons) (England) Regulations 2000
- “parking disc” has the same meaning as given in Regulation 8(5) of The Local Authorities' Traffic Orders (Exemptions for Disabled Persons) (England) Regulations 2000; and
- “relevant position” has the same meaning as given in Regulation 4 of The Local Authorities' Traffic Orders (Exemptions for Disabled Persons) (England) Regulations 2000
6. The Interpretation Act 1978 shall apply for the interpretation of this Order as it applies for the interpretation of an Act of Parliament.
7. The provisions of the following Orders are hereby revoked but only in so far as they are affected by the restrictions imposed by this Order:
- The Borough of Dacorum (Various Roads) (Prohibition and Restriction of Waiting) (No 2) Order 1993
- The Borough of Dacorum (Various Roads) (Prohibition and Restriction of Waiting) (No 2) Order 1996
8. The provisions of The Hertfordshire (Various Roads, Hemel Hempstead) (Restriction of Waiting) (Experimental) Order 2019 – Order No 8261 are hereby revoked.
9. The restrictions imposed by this Order shall be in addition to and not in derogation from any restriction or requirement imposed by any other regulations made or having effect as if made under the Act of 1984 or by or under any other enactment.

### **SCHEDULE**

lengths of Three Cherry Trees Lane, Finway Road, Swallowdale Lane, Cherry Tree Lane, Boundary Way, Boundary Park, Buncefield Lane, Green Lane and Breakspear Way, Hemel Hempstead – no waiting at any time

- |  |  |
|--|--|
| Three Cherry Trees Lane<br>(north east side) | <p>(a) from a point 17 metres north west of a point in line with the projected north west kerbline of Finway Road south eastwards for approximately 705 metres to a point 36 metres south east of a point in line with the projected east kerbline of Boundary Way.</p> <p>(b) from a point in line with the projected north west kerbline of Cherry Tree Lane north westwards for 35 metres.</p> <p>(c) from a point in line with the projected south east kerbline of Cherry Tree Lane south eastwards for 18 metres.</p>  |
| (south west side)                            | <p>(a) from a point in line with the projected north west kerbline of Finway Road north westwards for 16 metres.</p> <p>(b) from a point in line with the projected south east kerbline of Finway Road south eastwards for approximately 328 metres to a point in line with the projected north west kerbline of Swallowdale Lane.</p> <p>(c) from a point in line with the projected south east kerbline of Swallowdale Lane south eastwards for approximately 306 metres to a point in line with the projected west kerbline of Boundary Way.</p> <p>(d) from a point in line with the projected east kerbline of Boundary Way south eastwards for 33 metres.</p> <p>(e) from a point in line with the projected north west kerbline of Buncefield Lane north westwards for 30 metres.</p> |

	(f) from a point in line with the projected south east kerbline of Buncefield Lane south eastwards for 22 metres.
Finway Road (north west side)	from a point in line with the projected south west kerbline of Three Cherry Trees Lane south westwards for approximately 11 metres to a point in line with the south west side of the facade of 1 Finway Road.
(south east side)	from a point in line with the projected south west kerbline of Three Cherry Trees Lane south westwards for approximately 14 metres to a point in line with the south west side of the facade of 1 Finway Road.
Swallowdale Lane (north west side)	from a point in line with the projected south west kerbline of Three Cherry Trees Lane south westwards for approximately 148 metres to a point 32 metres south west of a point in line with the projected south west kerbline of the entrance to Itab House.
(south east side)	from a point in line with the projected south west kerbline of Three Cherry Trees Lane south westwards for approximately 168 metres to a point 32 metres south west of a point in line with the projected south west kerbline of the entrance to Itab House.
Cherry Tree Lane (north west side)	from a point in line with the projected north east kerbline of Three Cherry Trees Lane north eastwards for 56 metres.
(south east side)	from a point in line with the projected north east kerbline of Three Cherry Trees Lane north eastwards for 59 metres.
Boundary Way (both sides)	from a point in line with the projected south west kerbline of Three Cherry Trees Lane for its entire length to its junction with the Green Lane.
Boundary Way (west spur) (both sides)	from a point in line with the projected west kerbline of Boundary Way westwards for 13 metres.
(Access road into Gillette car park) (south east side)	from a point in line with the projected south west kerbline of Boundary Way south westwards for 65 metres.
(north west side)	from a point in line with the projected south west kerbline of Boundary Way south westwards for 35 metres.
(Access road into Woodwells Caravan Park) (both sides)	from a point in line with the projected south kerbline of Boundary Way southwards for 31 metres.
Boundary Park (both sides)	from a point in line with the projected north east kerbline of Boundary Way north eastwards for 12 metres.
Buncefield Lane (both sides)	(a) from a point in line with the projected south kerbline of Three Cherry Trees Lane southwards for 20 metres.  (b) from a point in line with the projected north east kerbline of Boundary Way north eastwards for 13 metres.
(north arm) (both sides)	from a point in line with the projected north kerbline of Breakspear Way northwards for 17 metres.
(south arm) (east side)	from a point in line with the projected south kerbline of Breakspear Way southwards and south eastwards for 35.5 metres.
(west side)	from a point 17.5 metres south east of a point in line with the projected south kerbline of Breakspear Way south eastwards for 14 metres.
Green Lane (both sides)	from a point in line with the projected south west kerbline of Three Cherry Trees Lane south wards for approximately to a point in line with the projected north kerbline of Breakspear Way, including the entire circumference of the roundabout at its junction with Boundary Way.

- Breakspear Way  
(north west side)
- (a) from a point in line with the projected north east kerbline of Maylands Avenue roundabout north eastwards for approximately 631 metres to a point in line with the projected south west kerbline of Buncefield Lane (north arm).
  - (b) from a point in line with the projected north east kerbline of Buncefield Lane (north arm) north eastwards for 281 metres to a point in line with the south west kerbline of Green Lane.
- (south east side)
- (a) from a point in line with the projected north east kerbline of Maylands Avenue roundabout north eastwards for approximately 584 metres to a point 4 metres north west of a point in line with the projected north west kerbline of Buncefield Lane (south arm).
  - (b) from a point in line with the projected north east kerbline of Buncefield Lane (south arm) north eastwards for approximately 45 metres to a point 10 metres north east of a point in line with the projected north east kerbline of Buncefield Lane (north arm).
  - (c) from a point 53 metres north east of a point in line with the projected north east kerbline of Buncefield Lane (north arm) north eastwards for approximately 195 metres to a point in line with the south west kerbline of Green Lane.

**Signed:**



**Quentin Baker**  
**Chief Legal Officer**

**Dated:** 04/08/20

## **STATEMENT OF REASONS**

### **THE HERTFORDSHIRE (VARIOUS ROADS, HEMEL HEMPSTEAD) (RESTRICTION OF WAITING) ORDER 2020**

Hertfordshire County Council is making permanent an Experimental Order for waiting restrictions which was introduced in June 2019 in parts of Hemel Hempstead.

The experimental restrictions introduced 'no waiting at any time' of vehicles in parts of Three Cherry Trees Lane, Finway Road, Swallowdale Lane, Cherry Tree Lane, Boundary Way, Boundary Park, Buncefield Lane, Green Lane and Breakspear Way, Hemel Hempstead.

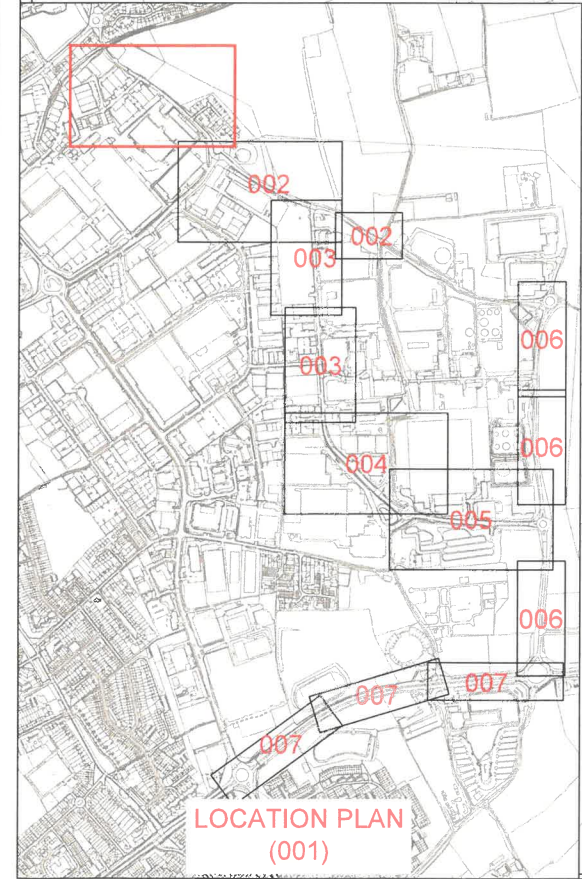
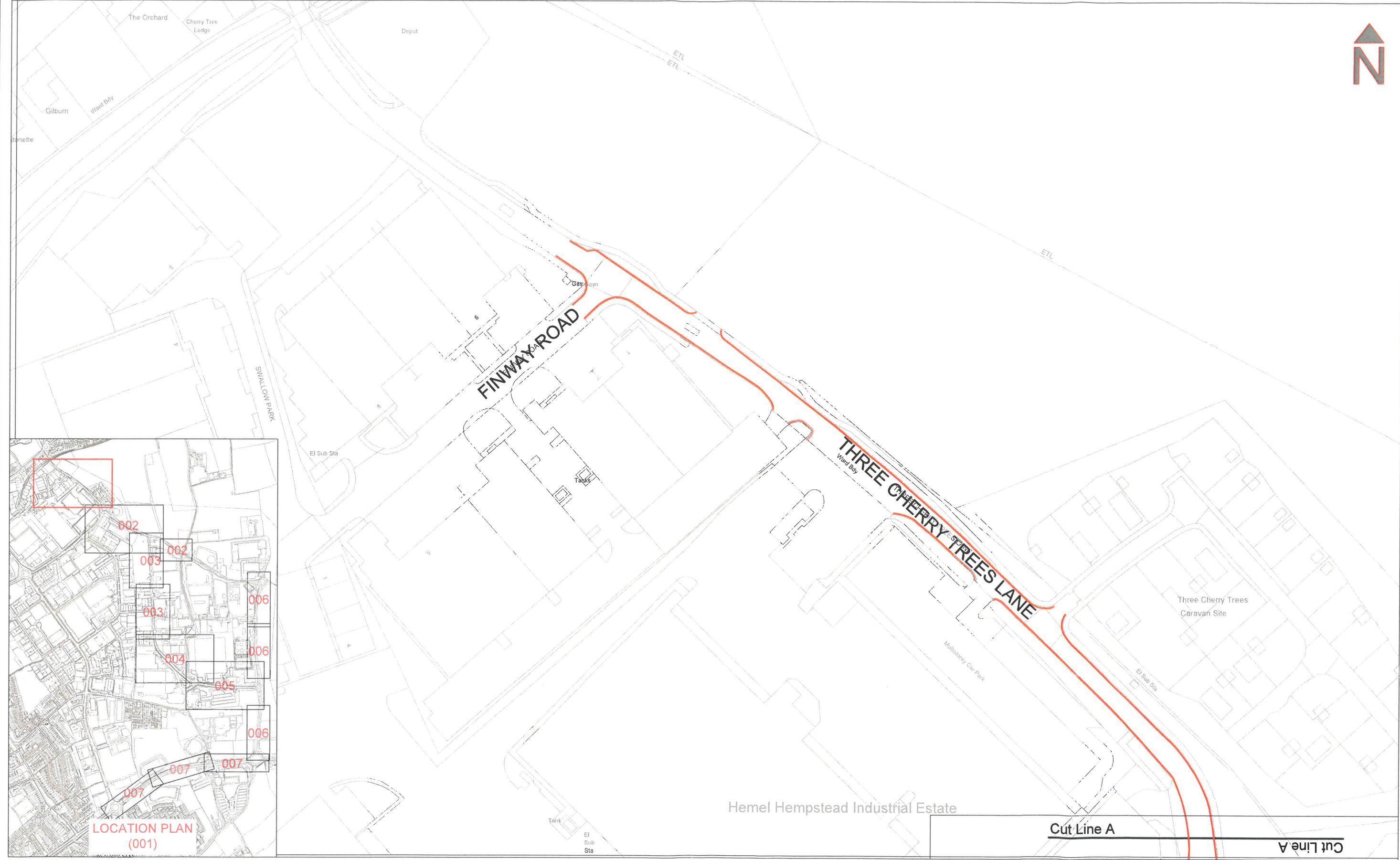
The 2019 Experimental Order revoked and replaced The Hertfordshire (Various Roads, Hemel Hempstead) (Prohibition of Waiting and Loading) (Experimental) Order 2018, which was published on 9 May 2018, as the area effected by the experimental scheme of traffic control was extended as part of the 2019 experimental Order.

The restrictions were introduced on an experimental basis in order that Officers could:

1. Establish the effect on Central Maylands and surrounding residential areas caused by any potential displacement of parked vehicles.
2. Test the effect on the wider network.
3. Establish if the restrictions were sufficient to protect adjoining verges, which were being damaged by vehicles parking thereon.

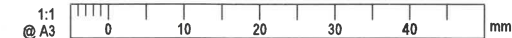
An assessment of the effect of the trial has been carried out by officers and the experimental restrictions have been reviewed. The results are considered to be successful and positive, with no objections having been received, therefore the Highways Authority has decided to make the waiting restrictions permanent.

The proposal has been subject to consultation with local and County Councillors representing the area and Dacorum Borough Council. The local Police, Ambulance, Fire and Rescue Service and Hertfordshire County Council Passenger Transport Unit have also been consulted.



**KEY:**

————— No Waiting At Any Time Parking Restriction



Revision	Amendment	Approved	Revision	Date

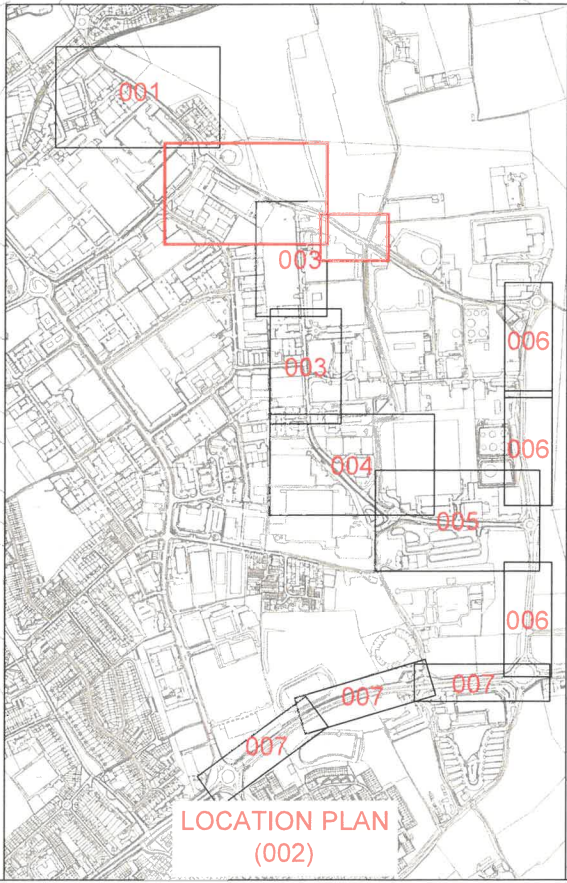
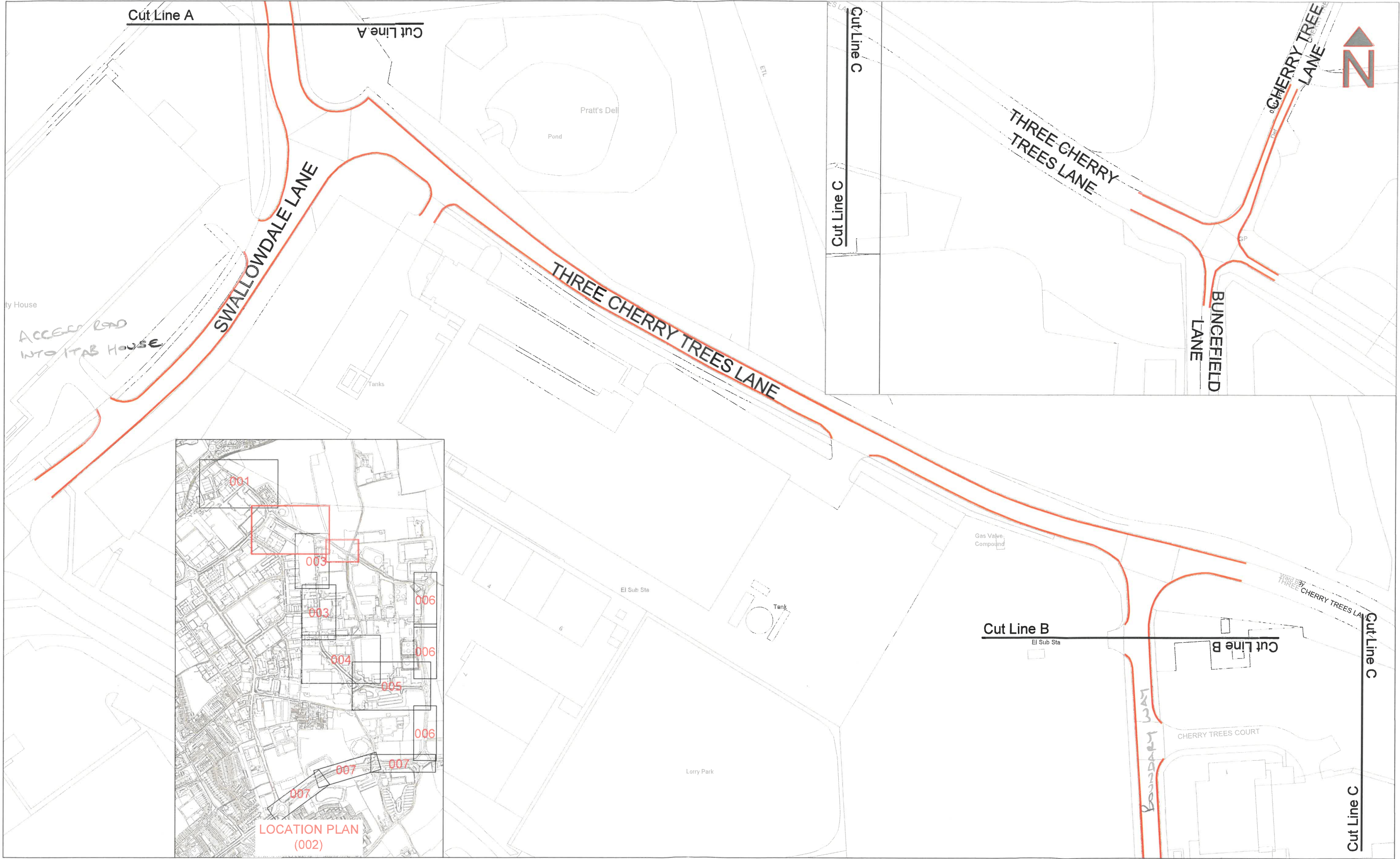


COUNTY HALL  
Pegs Lane  
Hertford, Herts  
SG13 8DN  
Phone: 01992 555555

© Crown copyright and database right to 2017 Ordnance Survey 100019606		
You are not permitted to copy, sub-licence, distribute or sell any of this data to third parties in any form. (This restriction may not apply to HCC and its licensed contractors, agents & partners.)		
Designed	Approved	Approved Date
IR		
Drawn	Scales	
IR	1:1250	

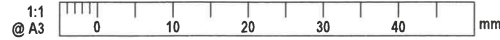
Project MAYLANDS BUSINESS PARK, HEMEL HEMPSTEAD EXPERIMENTAL TRO - VARIOUS ROADS	
Sheet TRO DRAWINGS	
Project No.	
Sheet No.	001
Revision	B





**KEY:**

————— No Waiting At Any Time Parking Restriction



Revision	Amendment	Approved	Revision Date

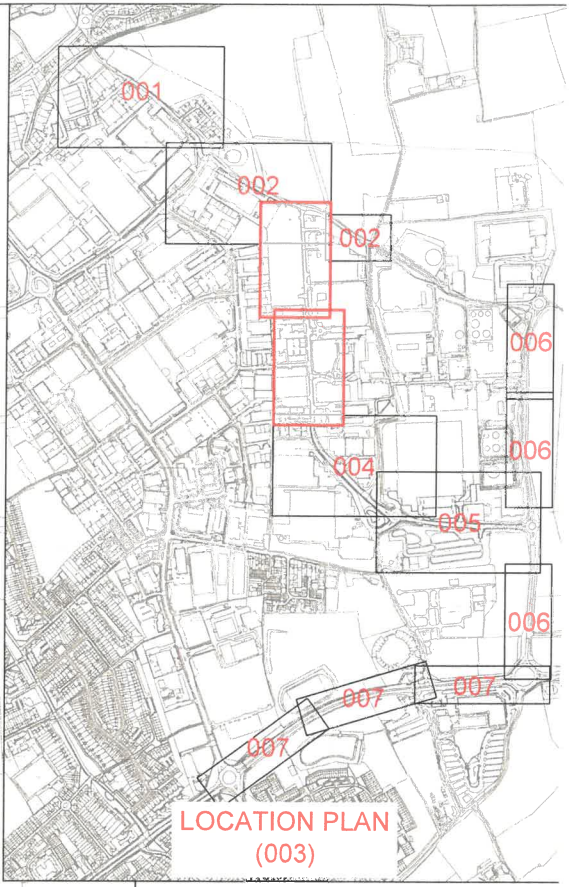


COUNTY HALL  
Pegs Lane  
Hertford, Herts  
SG13 8DN  
Phone: 01992 555555

© Crown copyright and database right to 2017 Ordnance Survey 100019606		
You are not permitted to copy, sub-licence, distribute or sell any of this data to third parties in any form. (This restriction may not apply to HCC and its licensed contractors, agents & partners.)		
Designed	Approved	Approved Date
IR		
Drawn	Scales	
IR	1:1250	

Project	
MAYLANDS BUSINESS PARK, HEMEL HEMPSTEAD EXPERIMENTAL TRO - VARIOUS ROADS	
Sheet	
TRO DRAWINGS	
Project No.	Sheet No.
	002
Revision	B





**KEY:**

— No Waiting At Any Time Parking Restriction

Revision	Amendment	Approved	Revision Date



COUNTY HALL  
Pegs Lane  
Hemel Hempstead, Herts  
SG13 8DN  
Phone: 01992 555555

© Crown copyright and database right to 2017 Ordnance Survey 100019606

You are not permitted to copy, sub-licence, distribute or sell any of this data to third parties in any form.  
(This restriction may not apply to HCC and its licensed contractors, agents & partners.)

Designed	Approved	Approved Date
IR		
Drawn	Scale	
IR	1:1250	

Project  
**MAYLANDS BUSINESS PARK  
HEMEL HEMPSTEAD  
EXPERIMENTAL TRO - VARIOUS ROADS**

Sheet  
**TRO DRAWINGS**

Project No.	Sheet No.	Revision
	003	B



**KEY:**

———— No Waiting At Any Time Parking Restriction

1:1  
@ A3  
0 10 20 30 40 mm

Revision	Amendment	Approved	Revision Date



COUNTY HALL  
Pege Lane  
Hertford, Herts  
SG13 8DN  
Phone: 01992 555555

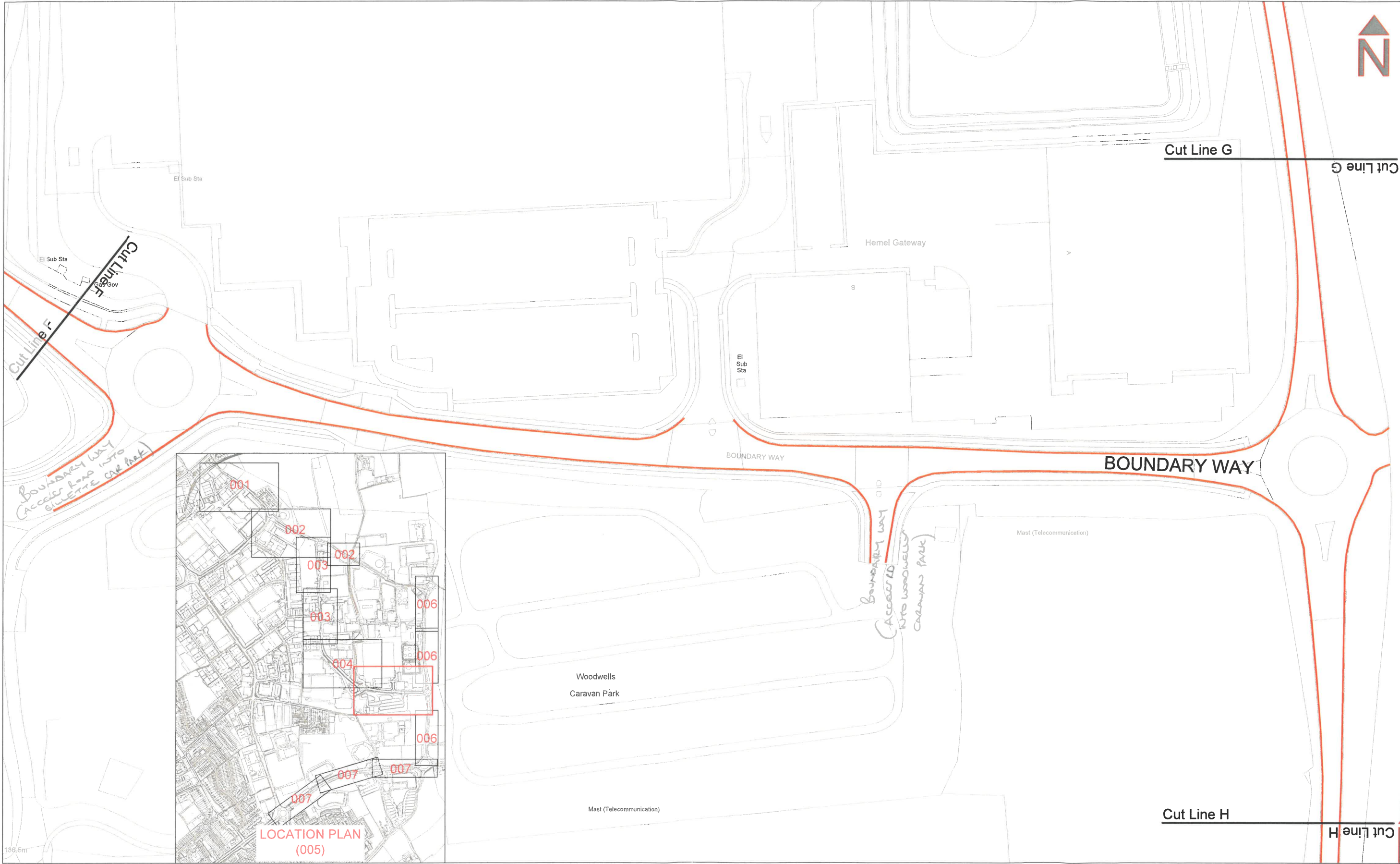
© Crown copyright and database right to 2017 Ordnance Survey 100019606

You are not permitted to copy, sub-licence, distribute or sell any of this data to third parties in any form.  
(This restriction may not apply to HCC and its licensed contractors, agents & partners.)

Designed	Approved	Approved Date
IR		
Drawn	Scales	
IR	1:1250	

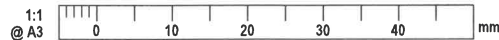
Project	MAYLANDS BUSINESS PARK, HEMEL HEMPSTEAD EXPERIMENTAL TRO - VARIOUS ROADS
Sheet	TRO DRAWINGS
Project No.	
Sheet No.	004
Revision	B





**KEY:**

————— No Waiting At Any Time Parking Restriction



Revision	Amendment	Approved	Revision Date



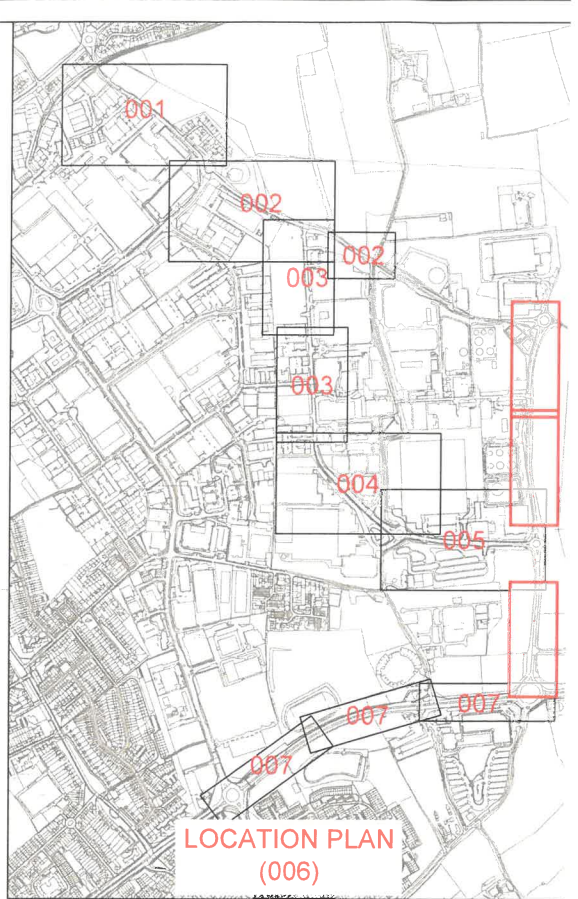
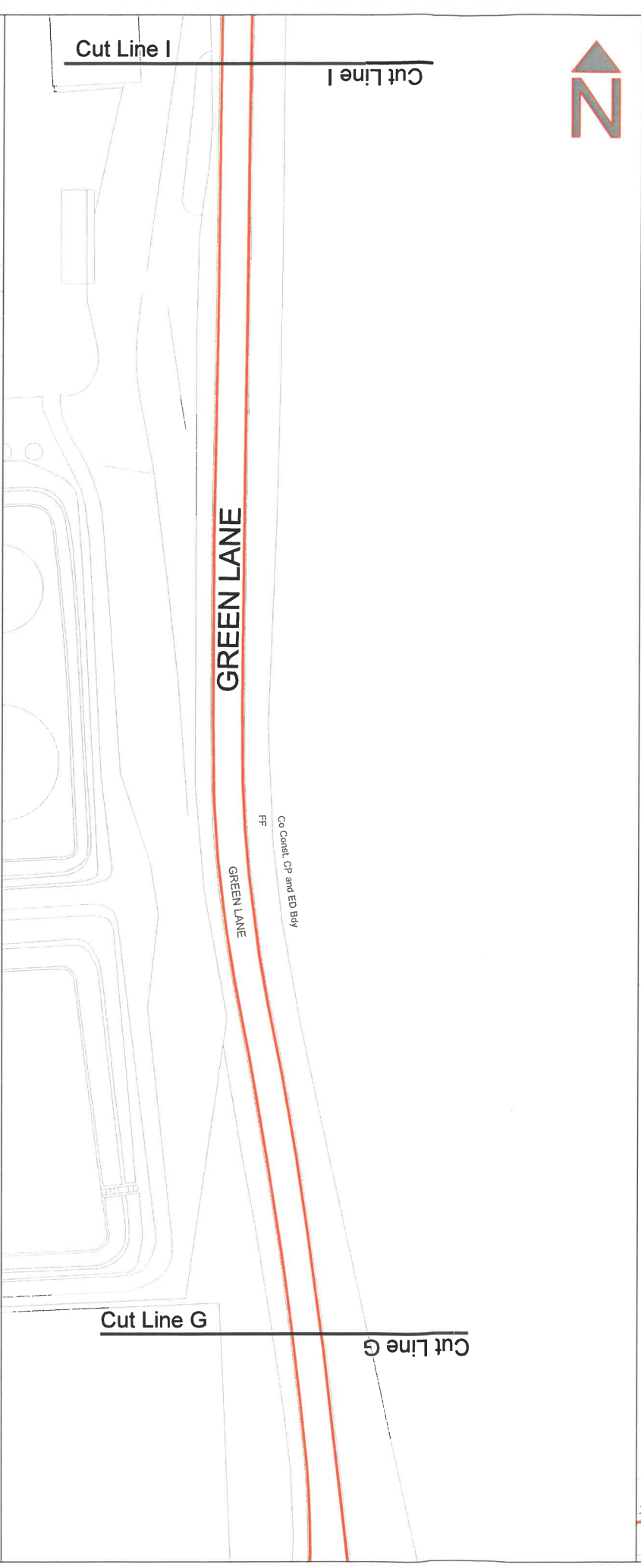
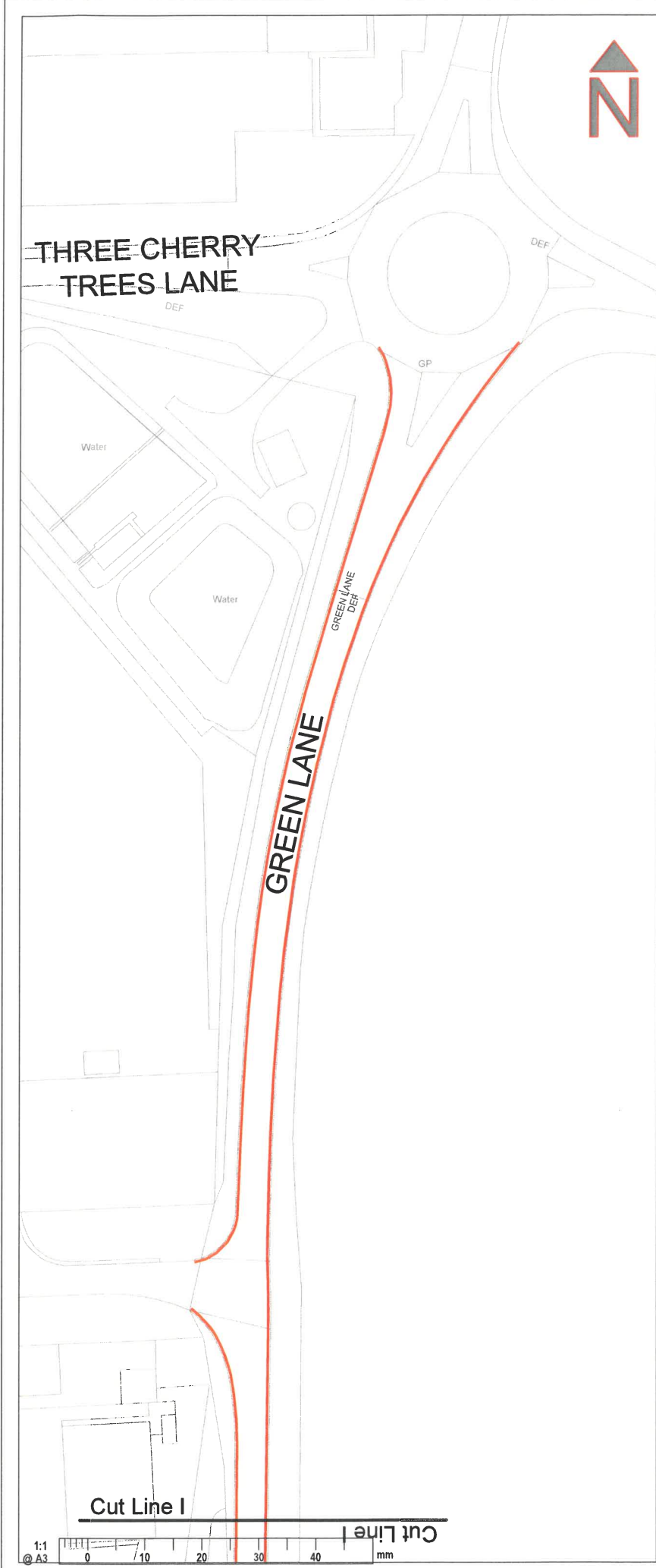
COUNTY HALL  
Pegs Lane  
Hertford, Herts  
SG13 8DN  
Phone: 01992 555555

© Crown copyright and database right to 2017 Ordnance Survey 100019606

You are not permitted to copy, sub-licence, distribute or sell any of this data to third parties in any form.  
(This restriction may not apply to HCC and its licensed contractors, agents & partners.)

Designed	Approved	Approved Date
IR		
Drawn	Scales	
IR	1:1250	

Project		MAYLANDS BUSINESS PARK, HEMEL HEMPSTEAD EXPERIMENTAL TRO - VARIOUS ROADS	
Sheet		TRO DRAWINGS	
Project No.		Sheet No.	Revision
		005	B



**KEY:**

— No Waiting At Any Time Parking Restriction

Revision	Amendment	Approved	Revision Date

COUNTY HALL  
Pegs Lane  
Hertford, Herts  
SG13 8DN  
Phone: 01992 555555

© Crown copyright and database right to 2017 Ordnance Survey 100019606

You are not permitted to copy, sub-licence, distribute or sell any of this data to third parties in any form.  
(This restriction may not apply to HCC and its licensed contractors, agents & partners.)

Designed	Approved	Approved Date
IR		

Drawn	Scale
IR	1:1250

Project:

**MAYLANDS BUSINESS PARK  
HEMEL HEMPSTEAD  
EXPERIMENTAL TRO - VARIOUS ROADS**

Sheet

**TRO DRAWINGS**

Project No.	Sheet No.	Revision
	006	B



