

**HERTFORDSHIRE COUNTY COUNCIL**  
**ROAD TRAFFIC REGULATION ACT 1984**

Date of Order: 9 February 2007  
Order No: 7081

**THE HERTFORDSHIRE (VARIOUS ROADS, HEMEL HEMPSTEAD)**  
**(RESTRICTION OF WAITING) ORDER 2006**

The Hertfordshire County Council in exercise of their powers under Sections 1, 2 and 3 of the Road Traffic Regulation Act 1984 (which said Act of 1984 is hereinafter referred to as "the Act of 1984"), and of all other enabling powers and after consultation with the Chief Officer of Police in accordance with Part III of Schedule 9 of the Act of 1984, hereby make the following Order:-

1. This Order may be cited as "The Hertfordshire (Various Roads, Hemel Hempstead) (Restriction of Waiting) Order 2006" and shall come into operation on Monday 19 February 2007.
2. Save as provided in Articles 6, 7 and 8(1) of this Order no person shall cause or permit any vehicle to wait at any time in those lengths of road in Hemel Hempstead specified in Schedule 1 to this Order.
3. Save as provided in Articles 6, 7 and 8(1) of this Order no person shall cause or permit any vehicle to wait between the hours of 8:00am and 5:00pm Monday to Friday during school term time in that length of Shenley Road, Hemel Hempstead specified in Schedule 2 to this Order.
4. Save as provided in Articles 6, 7 and 8(1) of this Order no person shall cause or permit any vehicle to wait between the hours of 8:30am and 5:00pm Monday to Friday during school term time in that length of Shenley Road, Hemel Hempstead specified in Schedule 3 to this Order.

In Articles 3 and 4 to this Order -

"school term time" has the meaning – as those days of the year which have been determined by the education authority as school days in accordance with the provisions of Section 32 of The Education Act 2002.

5. Save as provided in Articles 6, 7 and 8(2) of this Order no person shall cause or permit any vehicle to wait between the hours of 11:00am and 12:00noon Monday to Friday in those lengths of road in Hemel Hempstead specified in Schedule 4 to this Order.
- 6(1) Nothing in Articles 2, 3, 4 or 5 of this Order applies to the lengths of road restricted by those Articles (which said lengths of road are referred to in this Article as "the restricted area") in relation to –
  - (a) a vehicle being used for Fire and Rescue, Ambulance or Police purposes.
  - (b) anything done with the permission of or at the direction of –
    - (i) a police officer in uniform;
    - (ii) in respect of any of the lengths of road in the restricted area which are in a special parking area designated under Part II of the Road Traffic Act 1991 or Schedule 3 to that Act, a parking attendant appointed under Section 63A of the Act of 1984;
  - (c) a vehicle which is prevented from proceeding by circumstances beyond the drivers control or which has stopped in order to avoid injury or damage to persons or property or when required to do so by law;

- (d) a vehicle which is stationary in order that it may be used for one or more of the purposes specified in sub-Article (2) of this Article and which cannot reasonably be used for such a purpose without stopping in the restricted area;
- (e) a marked vehicle which, whilst used by a universal service provider in the course of the provision of a universal postal service, is stationary only for so long as may be reasonably necessary for postal packets to be delivered or collected;

In this Article -

The expressions "universal service provider", "provision of a universal postal Service" and "postal packet" shall bear the same meanings as in the Postal Services Act 2000.

(2) The "purposes" referred to in sub-Article (1)(d) of this Article are -

- (a) any operation involving building, demolition or excavation;
- (b) the removal of any obstruction to traffic;
- (c) the maintenance, improvement or reconstruction of a road;
- (d) constructing, improving, maintaining, or cleaning of any street furniture; or
- (e) the laying, erection, alteration, repair or cleaning of any sewer or of any main pipe or apparatus for the supply of gas, water or electricity, or of any telecommunications apparatus kept or installed for the purposes of a telecommunications code system or of any other telecommunications apparatus lawfully kept installed in any position.

7. Nothing in Articles 2, 3, 4 or 5 of this Order applies to the lengths of road restricted by those Articles (which said lengths of road are referred to in this Article as "the restricted area") so as to render it unlawful to cause or permit any vehicle to wait only for so long as may be reasonably necessary -

- (a) to enable goods to be loaded on or unloaded from the vehicle from or to premises adjacent to the restricted area; or
- (b) to enable a passenger to board or alight and to load and unload any luggage.

8.(1) Nothing in Articles 2, 3, or 4 of this Order shall render it unlawful to cause or permit a disabled person's vehicle which displays in the relevant position a disabled person's badge and a parking disc, to wait at any time in the lengths of road specified in Schedules 1, 2 and 3 of this Order for a period not exceeding 3 hours (not being a period separated by an interval of less than 1 hour from a previous period of waiting by the same vehicle in the same length of road).

(2) Nothing in Article 5 of this Order shall render it unlawful to cause or permit a disabled person's vehicle which displays in the relevant position a disabled person's badge to wait at any time in the lengths of road specified in Schedule 4 of this Order.

(3) In this Article -

"disabled person's vehicle" has the same meaning as in Section 142(1) of the Act of 1984;

"disabled person's badge" has the same meaning as in Section 142(1) of the Act of 1984;

"parking disc" has the same meaning as given in Regulation 8(5) of The Local Authorities' Traffic Orders (Exemptions for Disabled Persons) (England) Regulations 2000; and

"relevant position" means

- i) A vehicle displays a disabled person's badge in the relevant position if:-
    - a) in the case of a vehicle fitted with a dashboard or facia panel, the badge is exhibited thereon so that Part 1 of the badge is legible from outside the vehicle; or
    - b) in the case of a vehicle not fitted with a dashboard or facia panel, the badge is exhibited in a conspicuous position on the vehicle so that Part 1 of the badge is legible from outside the vehicle;
  - ii) A vehicle displays a parking disc in the relevant position if:-
    - a) in the case of a vehicle fitted with a dashboard or facia panel, the disc is exhibited thereon so that the quarter hour period during which the period of waiting began is legible from outside the vehicle; or
    - b) in the case of a vehicle not so fitted, the disc is exhibited in a conspicuous position on the vehicle so that the quarter hour period during which the period of waiting began is legible from outside the vehicle.
9. The Interpretation Act 1978 shall apply for the interpretation of this Order as it applies for the interpretation of an Act of Parliament.
10. The restrictions imposed by this Order shall be in addition to and not in derogation from any restriction or requirement imposed by any other regulations made or having effect as if made under the Act of 1984 or by or under any other enactment.

### **SCHEDULE 1**

#### **lengths of roads in Hemel Hempstead – no waiting at any time**

Wood Lane End (south east side)	from a point in line with the south west wall of 31 Wood Lane End north eastwards for approximately 87 metres to a point 3 metres south west of its junction with the south west kerblines of Duxons Turn.
Shenley Road (south west side)	from its junction with the south east kerblines of Botley Road south eastwards for approximately 16 metres
Botley Road (both sides)	from its junction with the south west kerblines of Shenley Road south westwards for 15 metres
Eastman Way (west side)	(a) from its junction with the north east kerblines of Dacorum Borough Council Household Waste Site access north eastwards for approximately 76 metres to its junction with its access for the industrial area.  (b) from its junction the south west kerblines of Dacorum Borough Council Household Waste Site south westwards and south eastwards for approximately 190 metres to its junction with the north west kerblines of the entrance to the "Next" distribution warehouse and office building.
Aston View (both sides)	from its junction with the north kerblines of Elstree Road northwards for approximately 15 metres to a point 2.5 metres south of a point in line with the south east wall of 1 Aston View.

Elstree Road (south side)	from a point in line with the boundary between 58 and 60 Elstree Road eastwards for 21 metres.
(north east side)	from a point 24.5 metres south east of its junction with the south east kerbline of Aston View south eastwards for approximately 44.5 metres to its junction with the north kerbline of Roydon Court.
(east side)	from its junction with the south kerbline of Roydon Court southwards for 16 metres.
(west side)	from a point 11.5 metres north west of a point in line with the north west wall of 145 Elstree Road north and north westwards for 12.5 metres.
Roydon Court (both sides)	from its junction with the east kerbline of Elstree Road eastwards for 10.5 metres.
Chaulden House Gardens (west side)	from its junction with the north kerbline of Chaulden Lane north eastwards and north westwards for 18 metres.
(east side)	from its junction with the north kerbline of Chaulden Lane north and north westwards for 21 metres.
Chaulden Lane (north side)	(a) from its junction with the west kerbline of Chaulden House Gardens westwards for 20.5 metres. (b) from its junction with the east kerbline of Chaulden House Gardens eastwards for 16 metres.
(south side)	from a point 16 metres east of a point in line with the east kerbline of Chaulden House Gardens westwards for approximately 42 metres to a point 20.5 metres west of a point in line with the west kerbline of Chaulden House Gardens.
Foster Road (both sides)	from its junction with the north kerbline of Kingsland Road northwards for 12 metres.
Kingsland Road (north side)	(a) from its junction with the west kerbline of Foster Road westwards for 4.5 metres. (b) from its junction with the east kerbline of Foster Road eastwards for 5.5 metres
Kingsland Road (south side)	(a) from its junction with the west kerbline of River Park westwards for 10 metres. (b) from its junction with the east kerbline of River Park eastwards for 10 metres. (c) from its junction with the west kerbline of the access road adjacent to 79 Kingsland Road leading to the garage block westwards for 10 metres. (d) from its junction with the east kerbline of the access road adjacent to 79 Kingsland Road leading to the garage block eastwards for 10 metres.
River Park (west side)	from its junction with the south kerbline of Kingsland Road southwards for approximately 36 metres to a point 5 metres south of a point in line with the southern boundary of 59 Kingsland Road.

- (east side) from its junction with the south kerbline of Kingsland Road southwards for 15 metres.
- Garage Access (adjacent to 79 Kingsland Road) (west side) from its junction with the south kerbline of Kingsland Road southwards for 11.5 metres.
- (east side) from its junction with the south kerbline of Kingsland Road southwards for 18 metres .
- Queensway (north west side) (a) from a point 2.5 metres south west of its junction with the south west kerbline of Jupiter Drive south westwards for approximately 68 metres to a point 25 metres south west of a point in line with the north east boundary of Queensway House.
- (b) from a point 3.5 metres north east of its junction with the north east kerbline of Jupiter Drive north eastwards for 20 metres.
- (south east side)(a) from its junction with the south west kerbline of Widmore Drive south westwards for approximately 25 metres to a point 2.5 metres north east of a point in line with the south west wall 117/119 Widmore Drive.
- (b) from its junction with the north east kerbline of Widmore Drive north eastwards for approximately 33 metres to a point 7 metres north east of a point in line with the north east wall of 90/92 Widmore Drive.
- Widmore Drive (south west side) from its junction with the south east kerbline of Queensway south eastwards for 13.5 metres.
- (north east side) from its junction with the south east kerbline of Queensway south eastwards for 15.5 metres.
- Blair Close (both sides) from its junction with the south east kerbline of Braemar Turn south eastwards for 13.5 metres.
- Braemar Turn (east side) (a) from its junction with the north east kerbline of Blair Close north eastwards and north westwards for approximately 61 metres to a point 7 metres east of a point in line with the north east wall 5 Braemar Turn.
- (b) from its junction with the south west kerbline of Blair Close south westwards for 15 metres.
- Braemar Turn (both sides) from its junction with the north east kerbline of Tattershall Drive north eastwards for 13 metres.
- Tattershall Drive (north east side) (a) from its junction with the north west kerbline of Braemar Turn north westwards for 12 metres
- (b) from its junction with the south east kerbline of Braemar Turn south eastwards for 13 metres.
- (east side) from a point in line with the north east wall of 78 Tattershall Drive northwards and north eastwards for approximately 40 metres to a point in line with the boundary between 75 and 76 Tattershall Drive.

## **SCHEDULE 2**

length of Shenley Road, Hemel Hempstead – no waiting 8:00am to 5:00pm Monday to Friday during school term time

Shenley Road (north east side) from a point in line with the north west wall of 39 Botley Road north westwards for approximately 35 metres to a point 4.5 metres north west of a point in line with the south east wall 32 Botley Road.

## **SCHEDULE 3**

length of Shenley Road, Hemel Hempstead – no waiting 8.30am to 5.00pm Monday to Friday during school term time

Shenley Road (south west side) from a point 3.5 metres north east of a point in line with the south east boundary of 4 Byron Place north westwards for approximately 54.5 metres to a point 4 metres north west of a point in line with the north west wall of 3 Byron Place.

## **SCHEDULE 4**

lengths of road in Hemel Hempstead – no waiting 11.00am to 12.00 noon Monday to Friday

Wood End Close (west/north west side) from its junction with the south kerbline of Wood Lane End southwards and south westwards for approximately 93 metres to a point 1 metre west of a point in line with the boundary between 3 and 4 Wood End Close.

(east side) from its junction with the south kerbline of Wood Lane End southwards for approximately 60 metres to its junction with the north kerbline of Romany Court.

Romany Court (north side) from its junction with the east kerbline of Wood End Close eastwards for approximately 33 metres to its eastern end of cul-de-sac.

(south side) from its junction with the east kerbline of Wood End Close eastwards for approximately 25 metres to its junction with the west kerbline of its southern spur access to the garages.

Wood End Close (south east side) from its junction with the south kerbline of Romany Court south westwards for approximately 27 metres to its junction with the east kerbline of Welkin Green.

Welkin Green (both sides) from its junction with south east kerbline of Wood End Close southwards for approximately 26 metres to a point in line with the south wall of 7 Wood End Close.

Hales Park (west side) from its junction with the south kerbline of Wood Lane End southwards for approximately 118 metres to its junction with the north west kerbline of Hales Park Close.

(east / north side) from its junction with the south kerbline of Wood Lane End southwards and eastwards for approximately 162 metres to its junction with the west kerbline of Crest Park.

(north side) from its junction with the east kerbline of Crest Park eastwards for approximately 35 metres to a point 0.5 metres east of a point in line with the east wall of 35 Hales Park.

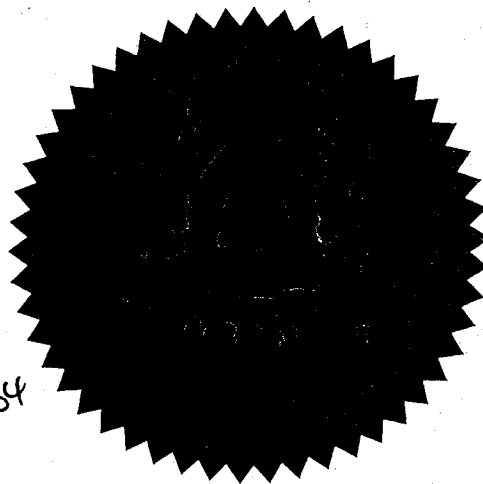
(south side) from its junction with the south east kerbline of Hales Park Close eastwards for approximately 86.5 metres to a point 1 metre west of a point in line with the east wall of 35 Hales Park.

- Crest Park  
(both sides) from its junction with the north kerbline of Hales Park northwards for 10.5 metres.
- Hales Park Close  
(north west side) from its junction with the south west kerbline of Hales Park south westwards for approximately 28 metres to a point 0.5 metres east of a point in line with the west wall of 3 Hales Park Close.
- (south east side) from its junction with the south kerbline of Hales Park south westwards for approximately 35 metres to a point 0.5 metres east of a point in line with the west wall of 3 Hales Park Close.

IN WITNESS whereof the Common Seal of the Hertfordshire County Council was here unto affixed this 9<sup>th</sup> day of February 2007 .

The Common Seal of )  
Hertfordshire County Council )  
was hereunto affixed )  
in the presence of:- )

*K P Pettitt*  
**Assistant  
County Secretary**



134

Assistant



Original Drawing Size A3

Wood End Lane, Hemel Hempstead.

**No waiting at anytime.**

**DOUBLE YELLOW LINE**

Revision with Dates

Project No.

**Drug. No.**

Rev.

M737306/004/100/06

WAITING RESTRICTIONS  
MMWHO DACORUM  
VARIOUS AREAS DACORUM

Drawing Title

WOOD LANE END

15

---

**Abstract**

Trident House  
48-48 Victoria Street  
St. Albans  
All 3HT  
Tel: 01787 816000  
Fax: 01787 816001

一、關於「中國共產黨」之組織  
 二、關於「中國共產黨」之綱領  
 三、關於「中國共產黨」之政策  
 四、關於「中國共產黨」之宣傳  
 五、關於「中國共產黨」之紀律  
 六、關於「中國共產黨」之財政  
 七、關於「中國共產黨」之教育  
 八、關於「中國共產黨」之文化  
 九、關於「中國共產黨」之體育  
 十、關於「中國共產黨」之藝術  
 十一、關於「中國共產黨」之宗教  
 十二、關於「中國共產黨」之社會  
 十三、關於「中國共產黨」之國際  
 十四、關於「中國共產黨」之未來  
 十五、關於「中國共產黨」之現在  
 十六、關於「中國共產黨」之過去  
 十七、關於「中國共產黨」之現在與未來  
 十八、關於「中國共產黨」之過去與現在  
 十九、關於「中國共產黨」之未來與過去  
 二十、關於「中國共產黨」之現在、未來與過去

At Original Drawing Size This Line Measures 10mm  
Original Drawing Size 40

Holtsmere End  
Junior School



Holt  
Infant a

SHENLEY ROAD

BOTLEY ROAD

These lines are to indicate the proposed new layout of the road and are not to be used for any other purpose. The proposed new layout is shown in the drawing and is subject to the approval of the Local Planning Authority. The proposed new layout is shown in the drawing and is subject to the approval of the Local Planning Authority.

Shenley Road, Hemel Hempstead.

NO WAITING AT ANYTIME

DOUBLE YELLOW LINE

Revision with Dates

Project No. M737308004/10004  
Rev. A

Project Title  
WAITING RESTRICTIONS  
MWHO DACTUM  
VARIOUS AREAS DACTUM

Drawing Title  
SHENLEY ROAD

Scale  
1:500

A - 22.02.2006 - SHV Amendments



Hertfordshire Highways

Technical Team  
4th-6th Floor, 100 Broad Street  
B1 1AA  
Tel: 01763 810000  
Fax: 01763 810001

and Drawing Size The Line Measures 100mm

Original Drawing Size A3



Distance to  
Next  
lineage  
to office

It is the Engineer's responsibility to ensure that the drawing is a true and accurate representation of the project and that it is in accordance with the relevant standards and specifications.

Eastman Way, Hemel Hempstead.

No waiting at any time

DOUBLE YELLOW LINE

Revision with Dates

Project No.

Dwg. No.

M/737308/004/10005

Rev.

WAITING RESTRICTIONS  
M/WHO DACTORUM  
VARIOUS AREAS DACTORUM

Project Title

Drawing Title

EASTMAN WAY

1 of 2

1/500

Hertfordshire Highways

Technical Engrg  
44-46 Watford Street  
St Albans  
Herts  
AL1 1ET  
Tel: 01727 810000  
Fax: 01727 810001



Original Drawing Size 100mm  
Original Drawing Size 100mm

EASTMAN WAY

INDUSTRIAL AREA

DBC HOUSEHOLD WASTE SITE

As per the drawing, the drawing is to be used for the purpose of the drawing. The drawing is to be used for the purpose of the drawing. The drawing is to be used for the purpose of the drawing.

Eastman Way, Hemel Hempstead.

to waiting at any time

DOUBLE YELLOW LINE

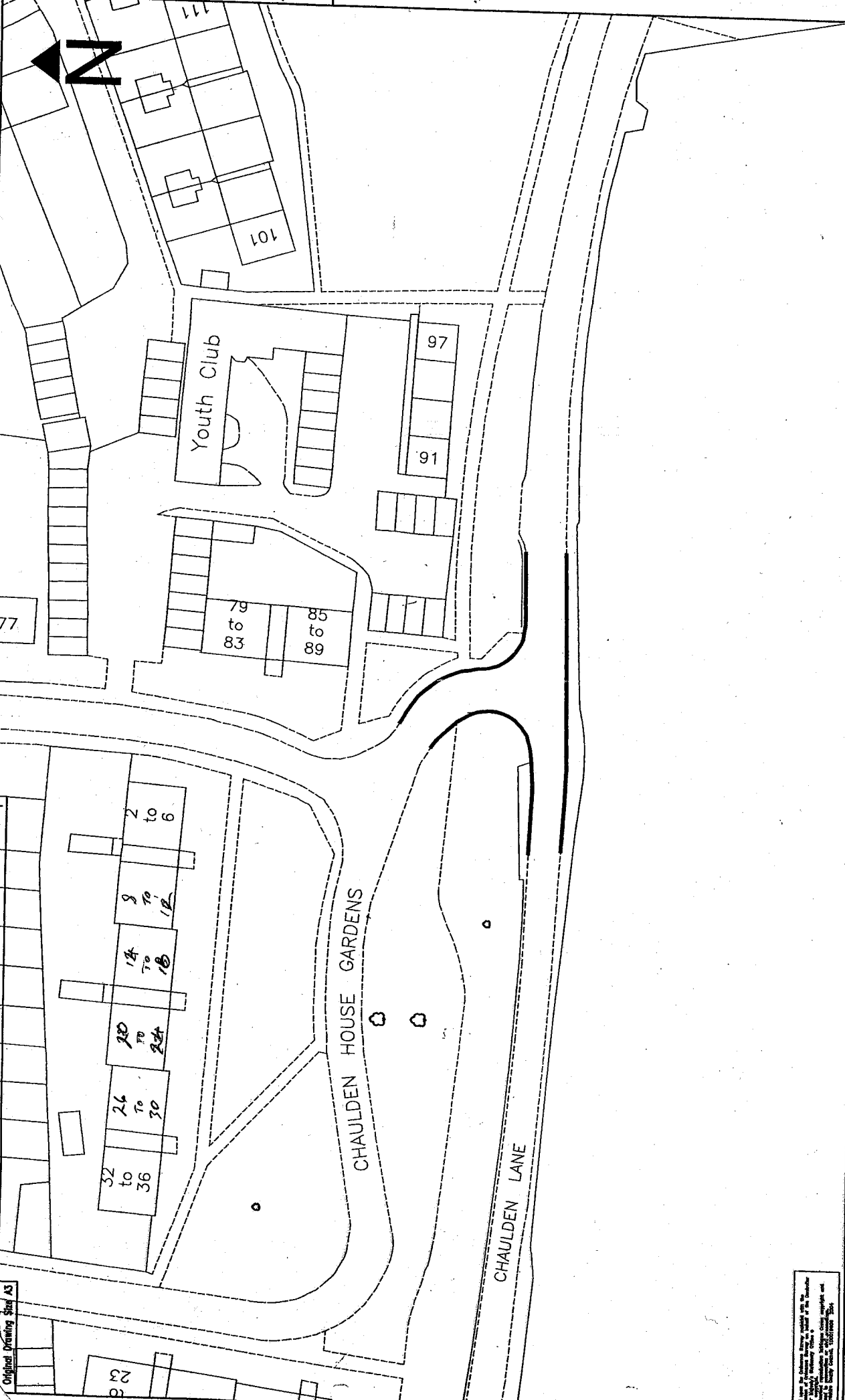
Revision with Dates

Project No.	Drp. No.	Rev.
10737306/004/10005		
Project Title		
WAITING RESTRICTIONS		
MWHO DACCORUM		
VARIOUS AREAS DACCORUM		
Drawing Title		
EASTMAN WAY		
Scale		
1:500		
Sheet		
2 of 2		

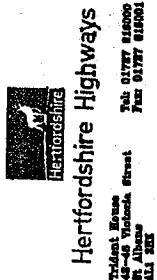


Hertfordshire Highways

Project Name  
48-48 Hertford Street  
St Albans  
AL1 1BS  
Tel: 01763 01000  
Fax: 01763 01001



<p>Computer File No. 10/2006/004/100/02</p>		<p>Project No. M/737308/004/100/02</p>		<p>Rev. A</p>	
<p>Project Title</p>		<p>Project Title</p>		<p>Project Title</p>	
<p>Waiting Restrictions</p>		<p>Waiting Restrictions</p>		<p>Waiting Restrictions</p>	
<p>MWHO DACORUM</p>		<p>MWHO DACORUM</p>		<p>MWHO DACORUM</p>	
<p>Various Areas Dacorum</p>		<p>Various Areas Dacorum</p>		<p>Various Areas Dacorum</p>	
<p>Chaalden House Gardens</p>		<p>Chaalden House Gardens</p>		<p>Chaalden House Gardens</p>	
<p>Scale 1:500</p>		<p>Scale 1:500</p>		<p>Scale 1:500</p>	
<p>Revision with Dates</p>		<p>Revision with Dates</p>		<p>Revision with Dates</p>	
<p>A - 22.02.2006 - SMT Amendments</p>		<p>A - 22.02.2006 - SMT Amendments</p>		<p>A - 22.02.2006 - SMT Amendments</p>	



Chaalden House Gardens, Hemel Hempstead.

WAITING AT ANY TIME

DOUBLE YELLOW LINE



**Queensway, Hemel Hempstead.**  
**NO WAITING AT ANYTIME**  
**DOUBLE YELLOW LINE**

### Revision with Dates

Project No. \_\_\_\_\_

**Draw. No.**

M/737306/004/100/03

1

**WAITING RESTRICTIONS  
MWHO DACORUM  
VARIOUS AREAS DACORUM**

Drawing Title

Sheet No.

1.500-

**QUEENSWAY**

## Hertfordshire Highways

**Trident House**  
42-48 Victoria Street  
St Albans  
AL1 3HX  
Tel: 01727 818000  
Fax: 01727 818001

THE UNIVERSITY OF CHICAGO



BRAEMAR TURN

BLAIR CLOSE

TATTERSHALL DRIVE

DUNSTER ROAD

**Braemar Turn, Hemel Hempstead.**

NO WAITING AT ANYTIME

DOUBLE YELLOW LINE

Project No.	Drq. No.	Rev.
		M787306100410025

Revision with Dates

M73730600410025  
Rev.

**WAITING RESTRICTIONS  
MWHO DACORUM  
VARIOUS AREAS DACORUM**

Drawing Title

7	1.500
---	-------

**Braemar Turn**

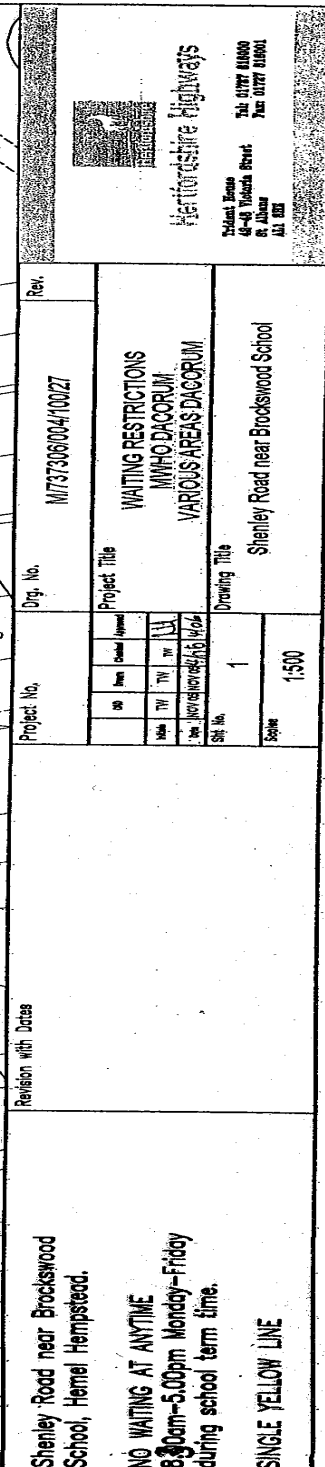
## Vertriebskanäle

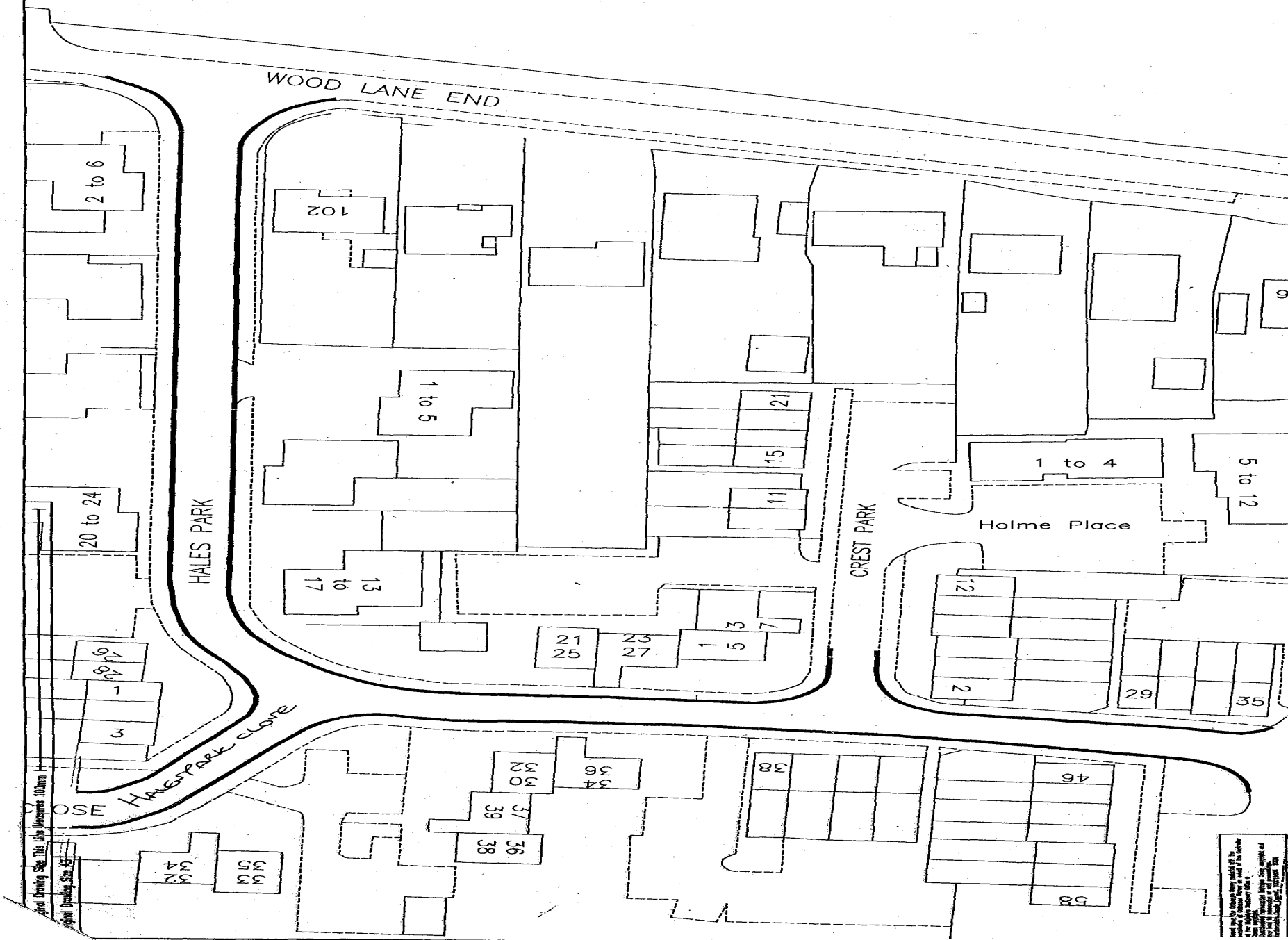
**Trident House**  
49-48 Victoria Street  
St. Albans  
AL1 2EZ

[illegible]







[illegible]

### Wood End Close and Hale Park Areas

**NO WAITING AT ANYTIME  
11.00am to 1200 noon -- MONDAY TO FRIDAY**

**SINGLE YELLOW LINE**

### Revision with Dates

Project No.	Drp. No.	Rev.	
		M773306/004/10007	
Project Title		WAITING RESTRICTIONS MWHQ DACORUM VARIOUS AREAS DACORUM	
Drawing Title		WOOD END CLOSE AND HALE PARK AREA	
Scale	1:500		
DATE	1		
BY			
CHECKED			
APPROVED			
SIGNATURE			

Hertfordshire Highways

Trident House  
 48-48 Victoria Street  
 St. Albans  
 Herts. AL1 5EZ  
 Tel: 01777 816000  
 Fax: 01777 816001



**Hartfordshire**

## Hertfordshire Highways

Trident House  
 42-48 Victoria Street  
 St Albans  
 AL1 1BT  
 Tel: 01777 816000  
 Fax: 01777 816001

Wood End Close and Hale Park Areas, Hemel Hempstead.  10 WAITING AT ANYTIME 1.00am to 1200 noon - MONDAY TO FRIDAY  SINGLE YELLOW LINE	Revision with Dates	Project No.	Org. No.	Rev.	
				M1737306/004/10007	
		Project Title			
		Isis	Area	Control	Approved
		Vehicle	TV	TV	U
		Area	Control	Control	U
		Drawing Title			
		SH. No.	2		
		Scale	1:500		
		WOOD END CLOSE AND HALE PARK AREA			



**HERTFORDSHIRE COUNTY COUNCIL**  
**ROAD TRAFFIC REGULATION ACT 1984**

Date of Order: 9 February 2007  
Order No: 7081

**THE HERTFORDSHIRE (VARIOUS ROADS, HEMEL HEMPSTEAD)**  
**(RESTRICTION OF WAITING) ORDER 2006**

The Hertfordshire County Council in exercise of their powers under Sections 1, 2 and 3 of the Road Traffic Regulation Act 1984 (which said Act of 1984 is hereinafter referred to as "the Act of 1984"), and of all other enabling powers and after consultation with the Chief Officer of Police in accordance with Part III of Schedule 9 of the Act of 1984, hereby make the following Order:-

1. This Order may be cited as "The Hertfordshire (Various Roads, Hemel Hempstead) (Restriction of Waiting) Order 2006" and shall come into operation on Monday 19 February 2007.
2. Save as provided in Articles 6, 7 and 8(1) of this Order no person shall cause or permit any vehicle to wait at any time in those lengths of road in Hemel Hempstead specified in Schedule 1 to this Order.
3. Save as provided in Articles 6, 7 and 8(1) of this Order no person shall cause or permit any vehicle to wait between the hours of 8:00am and 5:00pm Monday to Friday during school term time in that length of Shenley Road, Hemel Hempstead specified in Schedule 2 to this Order.
4. Save as provided in Articles 6, 7 and 8(1) of this Order no person shall cause or permit any vehicle to wait between the hours of 8:30am and 5:00pm Monday to Friday during school term time in that length of Shenley Road, Hemel Hempstead specified in Schedule 3 to this Order.

In Articles 3 and 4 to this Order -

"school term time" has the meaning - as those days of the year which have been determined by the education authority as school days in accordance with the provisions of Section 32 of The Education Act 2002.

5. Save as provided in Articles 6, 7 and 8(2) of this Order no person shall cause or permit any vehicle to wait between the hours of 11:00am and 12:00noon Monday to Friday in those lengths of road in Hemel Hempstead specified in Schedule 4 to this Order.
- 6(1) Nothing in Articles 2, 3, 4 or 5 of this Order applies to the lengths of road restricted by those Articles (which said lengths of road are referred to in this Article as "the restricted area") in relation to -
  - (a) a vehicle being used for Fire and Rescue, Ambulance or Police purposes.
  - (b) anything done with the permission of or at the direction of -
    - (i) a police officer in uniform;
    - (ii) in respect of any of the lengths of road in the restricted area which are in a special parking area designated under Part II of the Road Traffic Act 1991 or Schedule 3 to that Act, a parking attendant appointed under Section 63A of the Act of 1984;
  - (c) a vehicle which is prevented from proceeding by circumstances beyond the drivers control or which has stopped in order to avoid injury or damage to persons or property or when required to do so by law;

- (d) a vehicle which is stationary in order that it may be used for one or more of the purposes specified in sub-Article (2) of this Article and which cannot reasonably be used for such a purpose without stopping in the restricted area;
- (e) a marked vehicle which, whilst used by a universal service provider in the course of the provision of a universal postal service, is stationary only for so long as may be reasonably necessary for postal packets to be delivered or collected;

In this Article -

The expressions "universal service provider", "provision of a universal postal Service" and "postal packet" shall bear the same meanings as in the Postal Services Act 2000.

(2) The "purposes" referred to in sub-Article (1)(d) of this Article are -

- (a) any operation involving building, demolition or excavation;
- (b) the removal of any obstruction to traffic;
- (c) the maintenance, improvement or reconstruction of a road;
- (d) constructing, improving, maintaining, or cleaning of any street furniture; or
- (e) the laying, erection, alteration, repair or cleaning of any sewer or of any main pipe or apparatus for the supply of gas, water or electricity, or of any telecommunications apparatus kept or installed for the purposes of a telecommunications code system or of any other telecommunications apparatus lawfully kept installed in any position.

7. Nothing in Articles 2, 3, 4 or 5 of this Order applies to the lengths of road restricted by those Articles (which said lengths of road are referred to in this Article as "the restricted area") so as to render it unlawful to cause or permit any vehicle to wait only for so long as may be reasonably necessary -

- (a) to enable goods to be loaded on or unloaded from the vehicle from or to premises adjacent to the restricted area; or
- (b) to enable a passenger to board or alight and to load and unload any luggage.

8.(1) Nothing in Articles 2, 3, or 4 of this Order shall render it unlawful to cause or permit a disabled person's vehicle which displays in the relevant position a disabled person's badge and a parking disc, to wait at any time in the lengths of road specified in Schedules 1, 2 and 3 of this Order for a period not exceeding 3 hours (not being a period separated by an interval of less than 1 hour from a previous period of waiting by the same vehicle in the same length of road).

(2) Nothing in Article 5 of this Order shall render it unlawful to cause or permit a disabled person's vehicle which displays in the relevant position a disabled person's badge to wait at any time in the lengths of road specified in Schedule 4 of this Order.

(3) In this Article -

"disabled person's vehicle" has the same meaning as in Section 142(1) of the Act of 1984;

"disabled person's badge" has the same meaning as in Section 142(1) of the Act of 1984;