

THE BOROUGH OF BLACKBURN WITH DARWEN
(VARIOUS STREETS) (PROHIBITION AND
RESTRICTION OF WAITING AND REVOCATION) ORDER 2013

The Blackburn with Darwen Borough Council, in exercise of the powers of the said Council under Sections 1, 2, 4 and 124 of the Road Traffic Regulation Act 1984 and of all other enabling powers and after consultation with the Chief Officer of Police in accordance with Part III of Schedule 9 of the Act, hereby makes the following Order:-

1. This Order shall come into operation on the 17th day of February 2014 and may be cited as the Borough of Blackburn with Darwen (Various Streets) (Prohibition and Restriction of Waiting and Revocation) Order 2013

2.1 In this Order -

"a bus stop area" means any area of carriageway in any of the lengths of road or on the sides of road specified in the Schedules to this Order intended for the waiting of buses, which is comprised within and indicated by a road marking complying with either diagram 1025.1 or diagram 1025.3 in Schedule 6 to The Traffic Signs Regulations and General Directions 1994:

"disabled person's badge" has the same meaning as in The Disabled Persons (Badges for Motor Vehicles) (England) Regulations 2000, as amended:

"disabled person's vehicle" has the same meaning as in The Local Authorities' Traffic Orders (Exemptions for Disabled Persons) (England) Regulations 2000, as amended:

"parking disc" means a disc, issued by a local authority, complying with the requirements of the Local Authorities' Traffic Orders (Exemptions for Disabled Persons) (England) Regulations 2000, as amended.

"Civil Enforcement Officer" means a person authorised by or on behalf of Blackburn with Darwen Borough Council in accordance with Section 76 of the Traffic Management Act 2004

2.2 A vehicle displays a disabled person's badge in the relevant position if -

- (a) in the case of a vehicle fitted with a dashboard or fascia panel, the badge is exhibited thereon so that Part 1 of the badge is legible from outside the vehicle; or
- (b) in the case of a vehicle not fitted with a dashboard or fascia panel, the badge is exhibited in a conspicuous position on the vehicle so that Part 1 of the badge is legible from outside the vehicle.

A vehicle displays a parking disc in the relevant position if -

- (a) in the case of a vehicle fitted with a dashboard or fascia panel, the disc is exhibited thereon so that the quarter-hour period during which the period of waiting began is legible from outside the vehicle; or
- (b) in the case of a vehicle not so fitted, the disc is exhibited in a conspicuous position on the vehicle so that the quarter-hour period during which the period of waiting began is legible from outside the vehicle.

2.3 Except where otherwise stated, any reference in this Order to a numbered Article or Schedule is a reference to the Article or Schedule bearing that number in this Order.

3. Save as provided in Articles 8.1, 8.2, 8.3, 8.4 and 9 to this Order no person shall, except on the direction or with the permission of a police officer in uniform or a Civil Enforcement Officer cause or permit any vehicle to wait at any time on the sides of the road or in any lengths of road specified in Schedule 1.

4. Save as provided in Articles 8.1, 8.2, 8.3 and 9 of this Order no person shall, except on the direction or with the permission of a police officer in uniform or a Civil Enforcement Officer cause or permit any vehicle to load or unload goods at any time on the sides of the road or in any lengths of road specified in Schedule 2

5. Save as provided in Articles 8.1, 8.2, 8.3 8.5 and 9 to this Order no person shall, except on the direction of or with the permission of a Police Officer in uniform or of a Civil Enforcement Officer, cause or permit any vehicle to wait during the period of operation stated in Schedule 3 on the sides of road or in any lengths of road specified in the Schedule other than a delivery vehicle for the purposes of loading or unloading goods from that vehicle

6. Save as provided in Articles 8.1, 8.2, 8.3, 8.4, 8.5 and 9 of the provisions of this Order no person shall, except on the direction of or with the permission of a Police Officer in uniform or of a Civil Enforcement Officer, cause or permit any vehicle to wait between the hours of 9.00am and 6.00pm on any day other than a Sunday on the sides of road or in any of the length of road specified in Schedule 4 other than a vehicle engaged in the provision of a local service as defined in Section 2 of the Transport Act 1985:-

- (a) for a longer period than 2 hours; or
- (b) if a period of less than 3 hours has elapsed since the termination of the last period of waiting (if any) by that vehicle on the same side of road or length of road

7. Save as provided in Articles 8.1, 8.2, 8.3, 8.4, 8.5 and 9 of the provisions of this Order no person shall, except on the direction of or with the permission of a Police Officer in uniform or of a Civil Enforcement Officer, cause or permit any vehicle to wait between the hours of 8.00am and 6.00pm on any day other than a Sunday on the sides of road or in any of the length of road specified in Schedule 5 other than a vehicle engaged in the provision of a local service as defined in Section 2 of the Transport Act 1985:-

- (a) for a longer period than 30 minutes; or
- (b) if a period of less than 30 minutes has elapsed since the termination of the last period of waiting (if any) by that vehicle on the same side of road or length of road

8.1 Nothing in Articles 3, 4, 5, 6 and 7 of this Order shall render it unlawful to cause or permit any vehicle to wait in the lengths of road referred to therein for so long as may be necessary to:-

- (a) enable a person to board or alight from the vehicle
- (b) if the vehicle is being used for the purpose of collecting or delivering of postal packets as defined by Section 87 of the Post Office Act 1953.

8.2 (a) Nothing in Articles 3, 4, 5, 6 and 7 of this Order shall render it unlawful to cause or permit any vehicle to wait in the lengths of road referred therein if it cannot be conveniently used for such purpose in any other road, to be used in connection with any of the following operations, namely -

- (i) building maintenance, industrial or demolition operations;

- (ii) the removal of any obstruction to traffic;
- (iii) the maintenance, improvement or reconstruction of the said lengths of road or side of road; or
- (iv) the laying, erection, alteration or repair in or in land adjacent to the said lengths of road or side of road of any sewer or of any main, pipe or apparatus for the supply of gas, water or electricity or of any telecommunications apparatus as defined in paragraph 1(i) of the Telecommunications Code contained in Schedule 2 to the Telecommunications Act 1984.

8.3 Nothing in Articles 3, 4, 5, 6 and 7 of this Order shall render it unlawful to cause or permit any vehicle to wait in the lengths of road referred therein if it cannot be conveniently used for such purpose in any other road, to be used in connection with any of the following operations, namely –

(i) the vehicle if cannot conveniently be used for such purpose in any other road, to be used in the service of a local authority in pursuance of statutory powers or duties.

(ii) the vehicle to be used for fire brigade, ambulance or police purposes.

8.4 Nothing in Article 3, 5, 6 and 7 of this Order shall render it unlawful to cause or permit any vehicle to wait for so long as may be necessary for the purpose of enabling goods to be loaded or unloaded from the vehicle in the lengths of road specified in Schedules 1, 3, 4 and 5

8.5 Nothing in Articles 3, 4, 5, 6 and 7 of this Order shall render it unlawful to cause or permit a disabled person's vehicle which displays in the relevant position a disabled person's badge, and a parking disc (on which the driver, or other person in charge of the vehicle, has marked the time at which the period of waiting began) to wait in any of the lengths of road or on the side of the road referred to in the Article for a period not exceeding three hours (being a period separated by an interval of less than one hour from a previous period of waiting by the same vehicle in the same length or on the same side of road on the same day).

9. In so far as any provision of this Order conflicts with a provision which is contained in an Order made or having effect as if made under the Act of 1984, and existing at the time when this Order comes into operation, and which imposes a restriction or prohibition on waiting by vehicles other than those engaged in the provision of a local service, as defined in Section 2 of the Transport Act, 1985 in a bus stop area or grants an exemption from such restriction or prohibition, that provision of that Order shall prevail.

10. The prohibitions and restrictions imposed by this Order shall be in addition to and not in derogation from any restriction or requirement imposed by any regulations made or having effect as if made under the Act of 1984 or by or under any other enactment.

11. The Orders specified in Schedule 6 of this Order are hereby revoked to the extent specified in the second column thereof

Given under the Common Seal of the Blackburn with Darwen Borough Council

This 12th day of February 2014

The COMMON SEAL of the Blackburn
with Darwen Borough Council was
hereunto affixed in pursuance of a
resolution of the Council held on the
15 November 2001


Authorised Officer



P05-12.

SCHEDULE 1
NO WAITING AT ANY TIME

Street	Side	Location
Altom Street	Both	From a point 35.5 metres north east of its junction with Bicknell Street for a distance of 19.5 metres in a north easterly direction
	Both	From a point 34 metres north east of its junction with Balaclava Street for a distance of 16 metres in a north easterly direction
	Both	From a point 33.5 metres north east of its junction with Charlotte Street for a distance of 16 metres in a north easterly direction
	Both	From a point 33 metres north east of its junction with Inkerman Street for a distance of 16 metres in a north easterly direction
	North west	From a point 22 metres north east of its junction with Bold Street for a distance of 32 metres in a north easterly direction
	North west	From a point 13.5 metres north east of its junction with Oswald Street for a distance of 34 metres in a north easterly direction
	North west	From a point 38 metres north east of its junction with Shear Brow for a distance of 15.5 metres in a north easterly direction
	South east	From a point 27 metres north east of its junction with Bold Street for a distance of 27 metres in a north easterly direction
	South east	From a point 19 metres north east of its junction with Oswald Street for a distance of 29 metres in a north easterly direction
Balaclava Street	Both	From its junction with Altom Street for a distance of 2 metres in a south easterly direction
Bicknell Street	Both	From its junction with Altom Street for a distance of 2 metres in a south easterly direction
Charlotte Street	Both	From its junction with Altom Street for a distance of 2 metres in a south easterly direction

	Both	From its junction with Randal Street for a distance of 7.5 metres in a north westerly direction
	East	From its junction with Victoria Cross for a distance of 3 metres in a northerly direction
Inkerman Street	Both	From its junction with Altom Street for a distance of 2 metres in a south easterly direction
	Both	From its junction with Randal Street for a distance of 8 metres in a north westerly direction
Kendal Street	Both	From its junction with Altom Street for a distance of 2 metres in a south easterly direction
Oswald Street	Both	From its junction with Altom Street for a distance of 2 metres in a south easterly direction
Randal Street	North west	From its junction with Charlotte Street to a point 2.5 metres north east of its junction with Blackburn Street
	South	From its junction with Blackburn Street to its junction with Whalley Range
	South east	From a point 39.5 metres north east of its junction with Balaclava Street for a distance of 7.5 metres in a north easterly direction
	South east	From a point 29.5 metres north east of its junction with Inkerman Street for a distance of 13.5 metres in a north easterly direction
Shear Brow	North east	From a point 10 metres north west of its junction with Willoughby Street for a distance of 24 metres in a south easterly direction
Victoria Cross	East	From its junction with Victoria Street to its junction with Charlotte Street
Victoria Street	North west	From a point 119 metres north east of its junction with Victoria Cross to its junction with Swallow Drive
	North west	From its junction with Victoria Cross for a distance of 14 metres in a north easterly direction
	North west	From a point 55 metres north east of its junction with Victoria Cross for a distance of 24 metres in a north easterly direction
	South east	From its junction with Barbara Castle Way to its junction with Swallow Drive
Whalley Range	North west	From its junction with Randal Street to its junction with Swallow Drive
	South east	From its junction with Brookhouse Lane to its junction with Swallow Drive
Willoughby Street	Both	From its junction with Shear Brow for a distance of 5.5 metres in a north easterly direction
	Both	From its junction with Bold Street for a distance of 5 metres in a south westerly direction

SCHEDULE 2

Proposed no loading/unloading at any time

Street	Side	Location
Charlotte Street	East	From its junction with Victoria Cross for a distance of 3 metres in a northerly direction
Randal Street	North west	From its junction with Charlotte Street to a point 2.5 metres north east of its junction with Blackburn Street
	South	From its junction with Blackburn Street to its junction with Whalley Range
	South east	From a point 39.5 metres north east of its junction with Balaclava Street for a distance of 7.5 metres in a north easterly direction
	South east	From a point 29.5 metres north east of its junction with Inkerman Street for a distance of 13.5 metres in a north easterly direction
Victoria Cross	East	From its junction with Victoria Street to its junction with Charlotte Street
Victoria Street	North west	From a point 119 metres north east of its junction with Victoria Cross to its junction with Swallow Drive
	North west	From its junction with Victoria Cross for a distance of 14 metres in a north easterly direction
	North west	From a point 55 metres north east of its junction with Victoria Cross for a distance of 24 metres in a north easterly direction
	South east	From its junction with Barbara Castle Way to its junction with Swallow Drive
Whalley Range	North west	From its junction with Randal Street to its junction with Swallow Drive
	South east	From its junction with Brookhouse Lane to its junction with Swallow Drive

SCHEDULE 3

Loading Bay

Street	Side	Location
Oswald Street	North east	From a point 2 metres south east of its junction with Altom Street for a distance of 12 metres in a south easterly direction
Randal Street	North west	From a point 2.5 metres north east of its junction with Blackburn Street to its junction with Whalley Range
	South east	From a point 19 metres north east of its junction with Inkerman Street for a distance of 10 metres in a north easterly direction

SCHEDULE 4
Limited Waiting
Monday to Saturday 9am to 6pm
(2 hour, no return within 3 hours)

Street	Side	Location
Lime Street	South	From a point 29.5 metres west of its junction with Oswald Street for a distance of 15 metres in a westerly direction

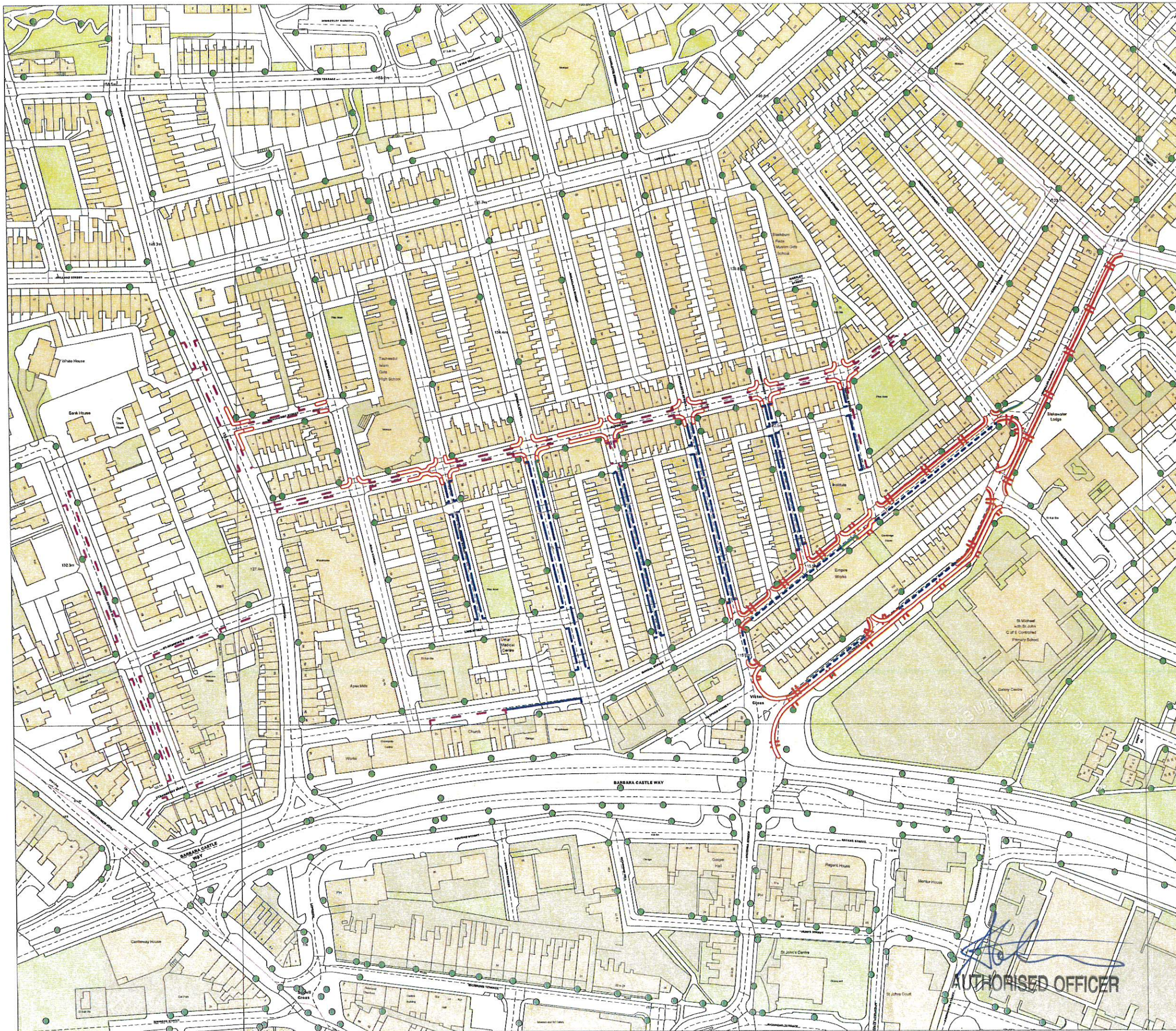
SCHEDULE 5
Limited Waiting
Monday to Saturday 8am to 6pm
(30 minutes, no return within 30 minutes)

Street	Side	Location
Randal Street	South	From a point 114.5 metres east of its junction with Limbrick to its junction with Oswald Street

SCHEDULE 6
SCHEDULE OF REVOCATIONS

Order	Reference
THE BOROUGH OF BLACKBURN (VARIOUS STREETS) (NO.9) (PROHIBITION AND RESTRICTION OF WAITING) ORDER 1987	<ul style="list-style-type: none"> Reference to the east side of Victoria Street in Schedule 1 from a point 7 metres south of its junction with James Street to Whalley Range
THE BOROUGH OF BLACKBURN (VARIOUS STREETS, DARWEN) (NO. 1) (PROHIBITION AND RESTRICTION OF WAITING) ORDER 1989	<ul style="list-style-type: none"> All reference to Altom Street in Schedule 1 Reference to both sides of Oswald Street in Schedule 1 from a point 15 metres north of its junction with Altom Street to a point 15 metres south of its junction with Altom Street
THE BOROUGH OF BLACKBURN (VARIOUS STREETS) (PROHIBITION AND RESTRICTION OF WAITING AND REVOCATION) (NO. 3) ORDER 1994	<ul style="list-style-type: none"> All reference to the west side of Blackburn Street in Schedule 1 All reference to the west side of Inkerman Street in Schedule 1 All reference to Kendal Street in Schedule 1
THE BOROUGH OF BLACKBURN WITH DARWEN (VARIOUS STREETS) (NO.12) (PROHIBITION AND RESTRICTION OF WAITING) ORDER 2003	<ul style="list-style-type: none"> All reference to Carr Street in Schedule 1
THE BOROUGH OF BLACKBURN WITH DARWEN (BLACKBURN NORTH ONE) (TRAFFIC MANAGEMENT) ORDER 2006	<ul style="list-style-type: none"> All reference to Victoria Street in Eligibility for Permits (Swallow Drive Area)
THE BOROUGH OF BLACKBURN WITH DARWEN (WHALLEY RANGE AREA, BLACKBURN)(TRAFFIC MANAGEMENT AND REVOCATION) ORDER 2008	<ul style="list-style-type: none"> Reference to the east side of Charlotte Street in Schedule 2 and 4 All reference to Randal Street in Schedules 2, 4 and 5 All reference to Victoria Cross in Schedules 2 and 4 All reference to Victoria Street in Schedules 2 and 4 All reference to Whalley Range in Schedules 2 and 4
BOROUGH OF BLACKBURN WITH DARWEN (WHALLEY RANGE AREA) (ON-STREET PARKING PLACES) ORDER 2008	<ul style="list-style-type: none"> Reference to entire order
THE BOROUGH OF BLACKBURN WITH DARWEN (RANDAL STREET, BLACKBURN)	<ul style="list-style-type: none"> Reference to the entire order

(RESIDENTS PARKING) ORDER 2008	
THE BOROUGH OF BLACKBURN WITH DARWEN (SHEAR BROW AREA, BLACKBURN) (TRAFFIC MANAGEMENT) ORDER 2011	<ul style="list-style-type: none"> • Reference to the south side of Randal Street in Schedule 4 from a point 74 metres east of its junction with Bold Street to its junction with Oswald Street
THE BOROUGH OF BLACKBURN WITH DARWEN (BLACKBURN TOWN CENTRE) (TRAFFIC MANAGEMENT) ORDER 2012	<ul style="list-style-type: none"> • All reference to St Andrew's Street in Schedule 6 • All reference to Strawberry Bank in Schedule 6 • All reference to Wellington Street St John in Schedule 6



- Key to Restriction Types Displayed**
- No waiting at any time
 - No Loading At Any Time
 - Limited Waiting 30 Minutes, No Return Within 30 Minutes Mon-Sat 8am-6pm
 - Pay & Display Parking / Residents' Parking Mon-Sat excl Bank Hols 10am-6pm Max Stay 2 Hours
 - Loading Bay
 - Resident's Parking
 - Resident's Parking/Limited Waiting

This map is reproduced from Ordnance Survey material with the permission of Ordnance Survey on behalf of the Controller of Her Majesty's Stationery Office + Crown Copyright. Unauthorised reproduction infringes Crown copyright and may lead to prosecution or civil proceedings.

Licence No: 2003

(c) Crown Copyright. All rights reserved.



DRAWING TITLE

Shear Brow
Residents' Parking Scheme

SCALE 1 : 2000

DATE 29/08/2012

DRAWING No.

DRAWN BY

AUTHORISED OFFICER

