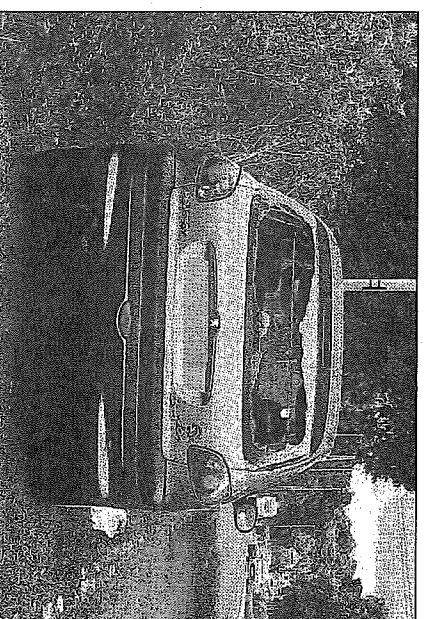
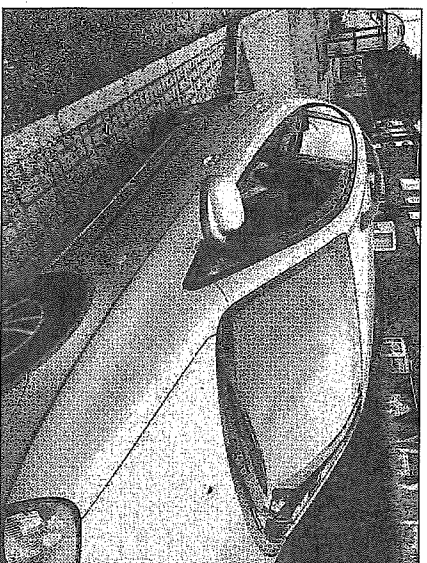


Ball bearings were fired at cars, homes and businesses

WHAT WAS DAMAGED BY THE VANDALS

- Rear window of a car in Desford Road, Newbold Verdon.
- Two car windows and a business in Desford Road, Enderby.
- Car window in Main Street, Newbold Verdon.
- A business and several vehicles in Dominion Road, Glenfield.
- Car window in Bagworth Road, Newbold Verdon.
- Window of a house in Somerset Drive, Glenfield.
- Numerous vehicle windows in Sunningdale Road, Braunstone Frith.
- Window of a business in Groby Road, Leicester.
- Windows of a business in Braunstone Lane, Braunstone.
- Windows of a house and a business in Hinckley Road, Leicester Forest East.
- Windows of a business in Fosse Road South, Leicester.
- Window of a business in Woodgate.
- Bodywork and window of a car in Enderby Road, Whetstone.
- Several car windows in Warren Lane, Leicester Forest East.
- Car window in Enderby Road, Blaby.
- Window of a business in Narborough Road, Leicester.
- Front door of a business in Scudamore Road, Braunstone Frith.
- Window of a bus in Red Hill Way, Belgrave.



'IT'S REALLY SCARY': Cars in Dominion Road, Glenfield, and Desford Lane, Enderby, were among several damaged in the ball bearing attacks. Below, three panes on the front of Next's head-quarters, in Enderby, were also damaged



Catapult vandals' spree

Vandals armed with a catapult carried out more than 25 attacks on cars, homes, shops and a bus.

BY TOM MACK

The wreckers fired ball bearings in a spate of attacks in Leicester and six surrounding villages.

The two-hour spree on Monday evening saw them target locations around the west of the city as well as Enderby, Glenfield, Blaby, Leicester

Forest East, Whetstone and Newbold Verdon. Three panes on the front of Next's headquarters, in Enderby, were also damaged.

Clarisa Bulias's Chevrolet, parked in Dominion Road, Leicester, had two windows smashed by a ball bearing that then flew into her neighbour's house.

Clarisa, 47, said: "I just found out in the morning when I went to take my son to school.

"Two windows are smashed. It's really scary.

"We've been here seven years and I think of it as a safe place to live."

Mark Geary, owner of the West End Gallery in High Cross Street, Leicester, said a ball bearing made a hole in the front window of his business. He said: "The windows are

very strong so I don't know what kind of catapult they were using but obviously not the sort I've ever seen. It will cost at least £600 to replace the window, but we are insured.

"I just don't understand it. It's so pointless."

Police said that early indications suggested the suspects used a vehicle for their wrecking spree.

Detective Inspector Mark Parish, who is overseeing the in-

vestigation, said: "I would urge anyone who has been a victim of a similar incident on Monday evening to report the damage to us.

"We would also like to speak to anyone who has captured the incidents or any of the damage on CCTV or on a dashcam.

"If you witnessed the incidents or have any information about those responsible then please get in touch as soon as possible."

DRIVERS now face being fined for stopping or parking outside Leicester Station.

Twenty-four-hour cameras were switched on yesterday and will enforce the new rules.

Over the last few weeks, fixed-position automatic number plate recognition (ANPR) cameras and warning signs have been installed to deter drivers from parking or stopping illegally outside Leicester Station.

Cameras will monitor the bus stop clearway, which runs along a 110m stretch of London Road from the corner of Station Street to the corner of Conduit Street. Only buses and Hackney cabs can stop in the bus stop clearway.

Other drivers caught on camera in the clearway will face fines of £70, reduced to £35 if paid within 21 days.

The work follows a fatal accident in July last year. Cyclist Sam Boulton was knocked into the path of a moving van when a passenger of a private hire cab that had stopped briefly on double yellow lines opened her door.

The taxi driver involved was convicted and fined £300, with £625 prosecution costs and a £30 victim surcharge.

Leicester assistant city mayor for the environment, Councillor Adam Clarke, said: "A clearly-marked bus stop clearway was put in place there after Sam's death, but some motorists have thoughtlessly continued to use it as a drop-off point, and many of those drove off before civil enforcement officers had time to issue a ticket.

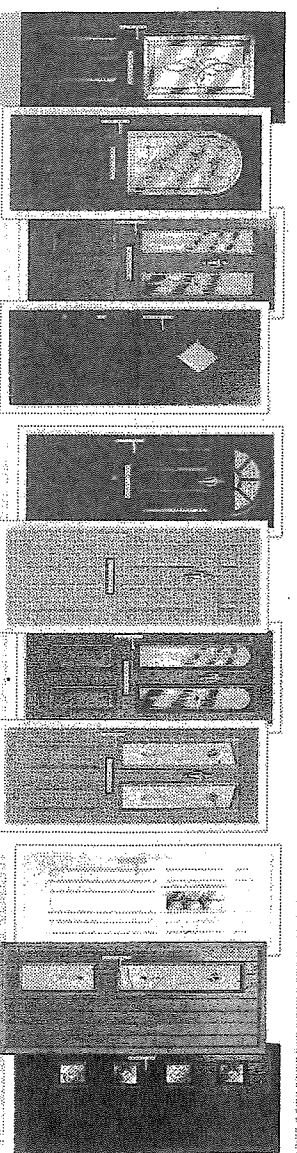
"Now, these traffic enforcement cameras mean that drivers who flout the law won't be able to get away with it any longer."



L.F.E. BESPOKE COLOUR WINDOWS AND DOORS

Our composite doors and windows are not only attractive, they are built to last, very low maintenance and secure.

Choose from our extensive range of styles and colours to reflect your home's personality, lifestyle and aspirations.

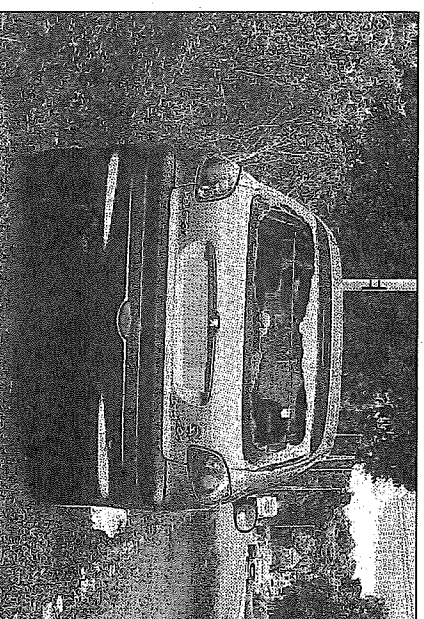
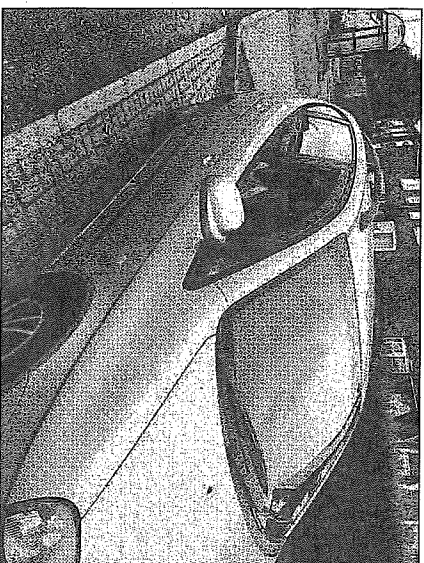


CALL NOW FOR A FREE QUOTE 0116 2001992

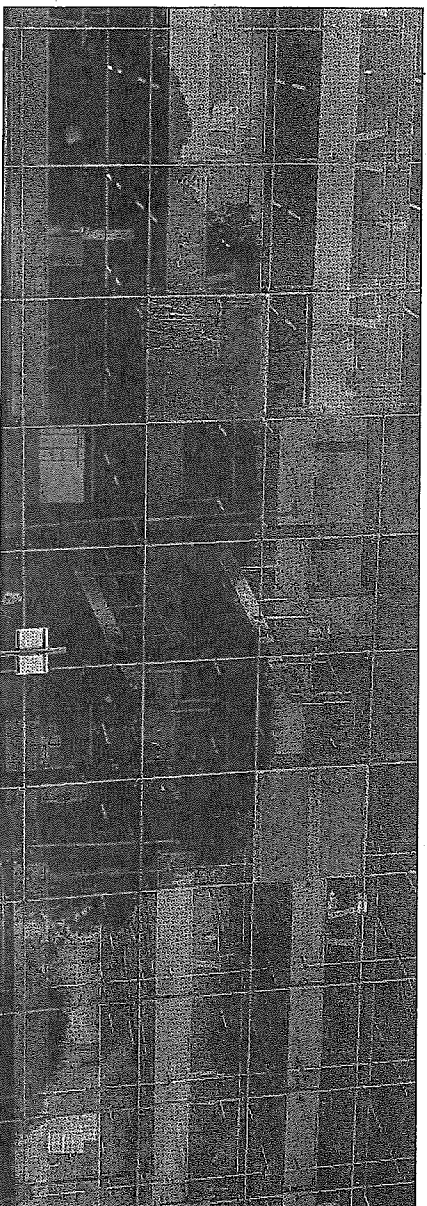
Ball bearings were fired at cars, homes and businesses

WHAT WAS DAMAGED BY THE VANDALS

- Rear window of a car in Desford Road, Newbold Verdon.
- Two car windows and a business in Desford Road, Enderby.
- Car window in Main Street, Newbold Verdon.
- A business and several vehicles in Dominion Road, Glenfield.
- Car window in Bagworth Road, Newbold Verdon.
- Window of a house in Somerset Drive, Glenfield.
- Numerous vehicle windows in Sunningdale Road, Braunstone Frith.
- Window of a business in Groby Road, Leicester.
- Windows of a business in Braunstone Lane, Braunstone.
- Windows of a house and a business in Hinckley Road, Leicester Forest East.
- Windows of a business in Fosse Road South, Leicester.
- Window of a business in Woodgate.
- Bodywork and window of a car in Enderby Road, Whetstone.
- Several car windows in Warren Lane, Leicester Forest East.
- Car window in Enderby Road, Blaby.
- Window of a business in Narborough Road, Leicester.
- Front door of a business in Scudamore Road, Braunstone Frith.
- Window of a bus in Red Hill Way, Belgrave.



'IT'S REALLY SCARY': Cars in Dominion Road, Glenfield, and Desford Lane, Enderby, were among several damaged in the ball bearing attacks. Below, three panes on the front of Next's head-quarters, in Enderby, were also damaged



Catapult vandals' spree

BY TOM MACK

Vandals armed with a catapult carried out more than 25 attacks on cars, homes, shops and a bus.

The wreckers fired ball bearings in a spate of attacks in Leicester and six surrounding villages.

The two-hour spree on Monday evening saw them target locations around the west of the city as well as Enderby, Glenfield, Blaby, Leicester

Forest East, Whetstone and Newbold Verdon. Three panes on the front of Next's head-quarters, in Enderby, were also damaged.

Clarisa Bulias's Cheverolet, parked in Dominion Road, Leicester, had two windows smashed by a ball bearing that then flew into her neighbour's house.

Clarisa, 47, said: "I just found out in the morning when I went to take my son to school.

"Two windows are smashed. It's really scary.

"We've been here seven years and I think of it as a safe place to live."

Mark Geary, owner of the West End Gallery in High Cross Street, Leicester, said a ball bearing made a hole in the front window of his business. He said: "The windows are

very strong so I don't know what kind of catapult they were using but obviously not the sort I've ever seen. It will cost at least £600 to replace the window, but we are insured.

"I just don't understand it. It's so pointless."

Police said that early indications suggested the suspects used a vehicle for their wrecking spree.

Detective Inspector Mark Parish, who is overseeing the in-

vestigation, said: "I would urge anyone who has been a victim of a similar incident on Monday evening to report the damage to us.

"We would also like to speak to anyone who has captured the incidents or any of the damage on CCTV or on a dashcam.

"If you witnessed the incidents or have any information about those responsible then please get in touch as soon as possible."

Warning to drivers as rail station cameras are switched on

DRIVERS now face being fined for stopping or parking outside Leicester Station.

Twenty-four-hour cameras were switched on yesterday and will enforce the new rules.

Over the last few weeks, fixed-position automatic number plate recognition (ANPR) cameras and warning signs have been installed to deter drivers from parking or stopping illegally outside Leicester Station.

Cameras will monitor the bus stop clearway, which runs along a 110m stretch of London Road from the corner of Station Street to the corner of Conduit Street. Only buses and Hackney cabs can stop in the bus stop clearway.

Other drivers caught on camera in the clearway will face fines of £70, reduced to £35 if paid within 21 days.

The work follows a fatal accident in July last year. Cyclist Sam Boulton was knocked into the path of a moving van when a passenger of a private hire cab that had stopped briefly on double yellow lines opened her door.

The taxi driver involved was convicted and fined £300, with £625 prosecution costs and a £30 victim surcharge.

Leicester assistant city mayor for the environment, Councillor Adam Clarke, said: "A clearly-marked bus stop clearway was put in place there after Sam's death, but some motorists have thoughtlessly continued to use it as a drop-off point, and many of those drove off before civil enforcement officers had time to issue a ticket.

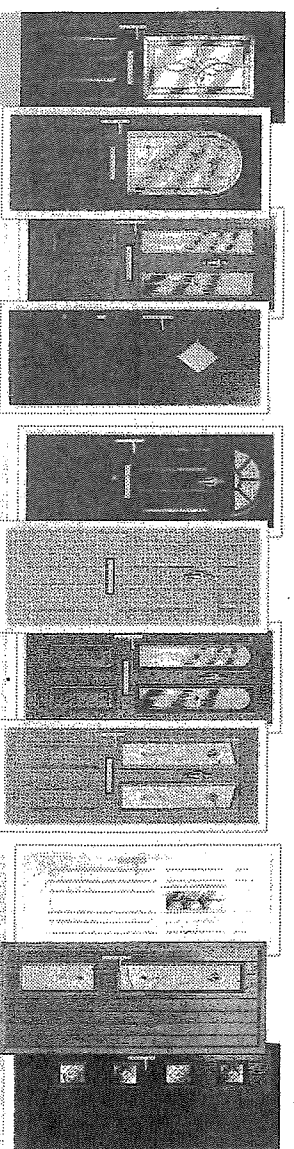
"Now, these traffic enforcement cameras mean that drivers who flout the law won't be able to get away with it any longer."



L.F.E. BESPOKE COLOUR WINDOWS AND DOORS

Our composite doors and windows are not only attractive, they are built to last, very low maintenance and secure.

Choose from our extensive range of styles and colours to reflect your home's personality, lifestyle and aspirations.



CALL NOW FOR A FREE QUOTE 0116 2001992